

District I
PO Box 1980, Hobbs, NM 88241-1980
District II
PO Drawer DD, Artesia, NM 88211-0719
District III
1000 Rio Brazos Rd., Aztec, NM 87410
District IV
PO Box 2088, Santa Fe, NM 87504-2088

State of New Mexico
Energy, Minerals & Natural Resources Department

OIL CONSERVATION DIVISION
PO Box 2088
Santa Fe, NM 87504-2088

Form C-102
Revised February 21, 1994
Instructions on back
Submit to Appropriate District Office
State Lease - 4 Copies
Fee Lease - 3 Copies

☐ AMENDED REPORT

WELL LOCATION AND ACREAGE DEDICATION PLAT

¹ API Number 30-025-26018		² Pool Code 76480		³ Pool Name Eumont Yates 7-Rvrs Queen Gas	
⁴ Property Code 003101		⁵ Property Name State D			⁶ Well Number 14
⁷ OGRID No. 005073		⁸ Operator Name CONOCO INC.			⁹ Elevation 3571'

¹⁰ Surface Location

UL or lot no.	Section	Township	Range	Lot Ida	Feet from the	North/South line	Feet from the	East/West line	County
A	15	21S	36E		915	North	990	East	Lea

¹¹ Bottom Hole Location If Different From Surface

UL or lot no.	Section	Township	Range	Lot Ida	Feet from the	North/South line	Feet from the	East/West line	County

¹² Dedicated Acres 320	¹³ Joint or Infill	¹⁴ Consolidation Code	¹⁵ Order No.
--------------------------------------	-------------------------------	----------------------------------	-------------------------

NO ALLOWABLE WILL BE ASSIGNED TO THIS COMPLETION UNTIL ALL INTERESTS HAVE BEEN CONSOLIDATED
OR A NON-STANDARD UNIT HAS BEEN APPROVED BY THE DIVISION

16			18		<p>¹⁷ OPERATOR CERTIFICATION I hereby certify that the information contained herein is true and complete to the best of my knowledge and belief</p> <p>Signature <u>Jerry W. Hoover</u> Printed Name Sr. Conservation Coordinator</p> <p>Title 10/24/94</p> <p>Date</p>		
						<p>¹⁸ SURVEYOR CERTIFICATION I hereby certify that the well location shown on this plat was plotted from field notes of actual surveys made by me or under my supervision, and that the same is true and correct to the best of my belief.</p> <p>Date of Survey</p> <p>Signature and Seal of Professional Surveyer:</p> <p>Certificate Number</p>	
							<p>NSP - 1657(L)</p>

COUNTY LEA FIELD Eumont STATE NM
 OPR CONTINENTAL OIL CO. API 30-025-2601
 NO 14 LEASE State "D" MAP
Sec 15, T21S, R36E CO-ORD
915' FNL, 990' FEL of Sec 10-2-25 NM
1 mi SE/Oil Center SPD 7-31-78 CMP 9-12-78

CSU 8 5/8" at 1328' w/700 sx 4 1/2" at 3800' w/650 sx	WELL CLASS: INIT <u>D</u> FIN <u>DG</u> ELEV			
	FORMATION	DATUM	FORMATION	
	TD 3800' (GREG)		PBD	

IP (Queen) Perfs 3444-3610' F 400 MCFCPD. Pot based on
 24 hr test. CHK (NR). GOR (NR); gty (NR); CP 23#; TP (NR)

CONTR Cactus OPRS ELEV 3566' GL PD 3800' RT

F.R. 7-17-78
 (Queen)
 8-4-78 Drlg 2775'
 8-14-78 TD 3800'; WOCU
 8-21-78 TD 3800'; WOCU
 8-28-78 TD 3800'; WOCU
 9-1-78 TD 3800'; SI/BHP
 Perf (Queen) 3444-3610' w/2 SPF
 Acid (3444-3610') 6550 gals
 Frac (3444-3610') 50,000 gals + 91,000# sd
 9-11-78 TD 3800'; Flwg
 Flwd 423 MCFCPD in 24 hrs (3444-3610')
 9-18-78 TD 3800'; WO/4 Points
 10-9-78 TD 3800'; Complete
 LOG TOPS: Rustler 1335', Salt 1425', Base
 Salt 2600', Yates 2747', Seven Rivers 3008',
 Queen 3433', Grayburg 3726'
 LOGS RUN: GRL, CNL, FDC, DILL

10-2-25 NM

LEA
CONTINENTAL OIL CO.

Eumont
14 State "D"
Sec 15, T21S, R36E

NM
Page #2

10-14-78 COMPLETION ISSUED

10-2-25 NM
IC 30-025-70252-78

OIL CONSERVATION DIVISION

P.O. Box 2088

Santa Fe, New Mexico 87504-2088

DISTRICT I

P.O. Box 1980, Hobbs, NM 88240

DISTRICT II

P.O. Drawer DD, Artesia, NM 88210

DISTRICT III

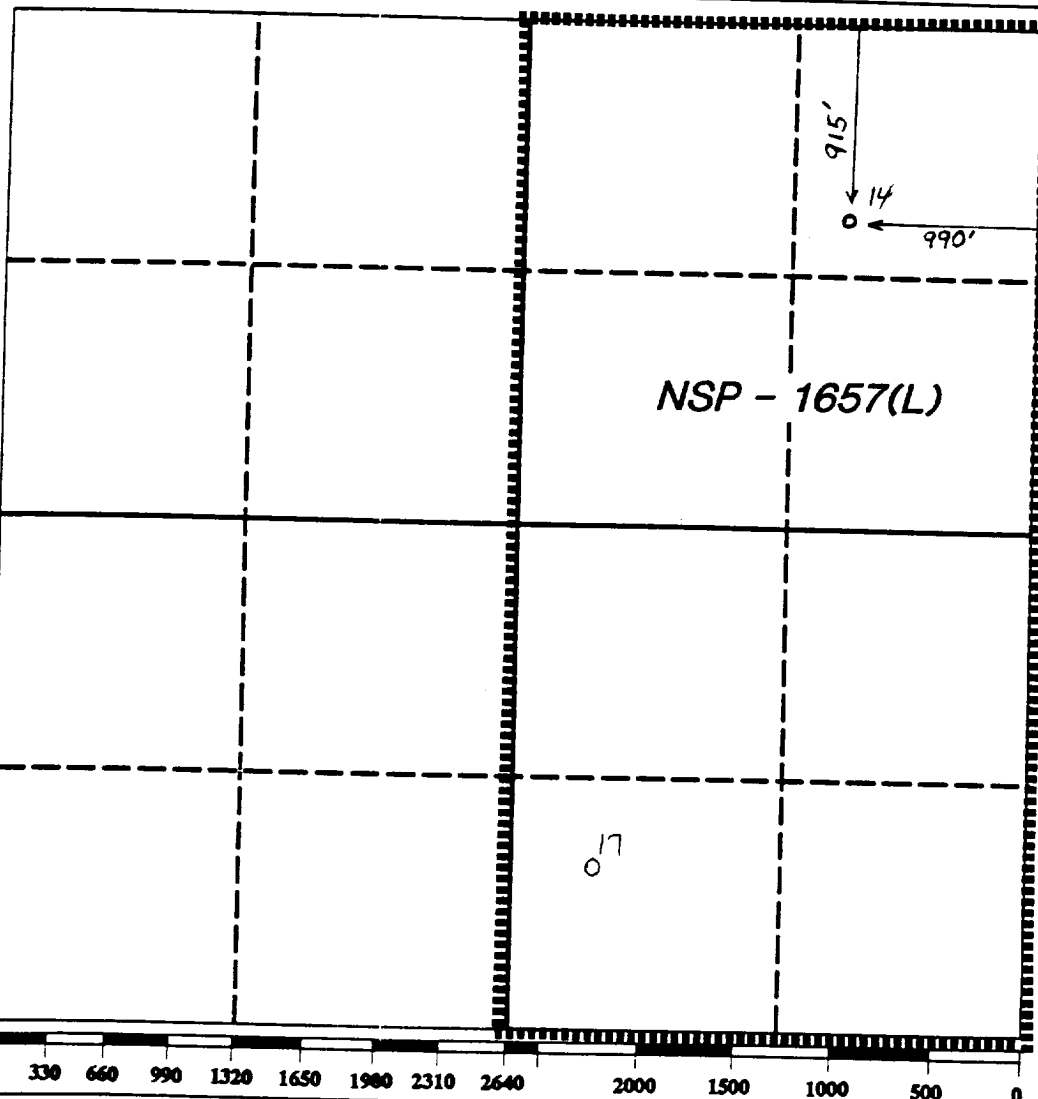
1000 Rio Brazos Rd., Aztec, NM 87410

WELL LOCATION AND ACREAGE DEDICATION PLAT

All Distances must be from the outer boundaries of the section

Operator Conoco, Inc.			Lease State D		Well No. 14
Unit Letter A	Section 15	Township 21S	Range 36E	County Lea	
Actual Footage Location of Well: 915 feet from the North line and 990 feet from the East line					
Ground level Elev. 3571'		Producing Formation Queen		Pool Eumont Yates 7-Rvrs. Queen	Dedicated Acreage: 320 Acres

- Outline the acreage dedicated to the subject well by colored pencil or hatchure marks on the plat below.
- If more than one lease is dedicated to the well, outline each and identify the ownership thereof (both as to working interest and royalty).
- If more than one lease of different ownership is dedicated to the well, have the interest of all owners been consolidated by communitization, unitization, force-pooling, etc.?
☐ Yes ☐ No If answer is "yes" type of consolidation
If answer is "no" list the owners and tract descriptions which have actually been consolidated. (Use reverse side of this form if necessary.)
No allowable will be assigned to the well until all interests have been consolidated (by communitization, unitization, forced-pooling, or otherwise) or until a non-standard unit, eliminating such interest, has been approved by the Division.



OPERATOR CERTIFICATION

I hereby certify that the information contained herein is true and complete to the best of my knowledge and belief.

Signature

Jerry W. Hoover

Printed Name

Jerry W. Hoover

Position

Sr. Conservation Coord.

Company

Conoco, Inc.

Date

2/2/93

SURVEYOR CERTIFICATION

I hereby certify that the well location shown on this plat was plotted from field notes of actual surveys made by me or under my supervision, and that the same is true and correct to the best of my knowledge and belief.

Date Surveyed

Signature & Seal of Professional Surveyor

Certificate No.

NEW MEXICO OIL CONSERVATION COMMISSION
WELL LOCATION AND ACREAGE DEDICATION PLAT

Form C-102
Supersedes C-128
Effective 1-1-65

All distances must be from the outer boundaries of the Section.

Operator CONTINENTAL OIL COMPANY			Lease STATE D			Well No. 14		
Unit Letter A	Section 15	Township 21 S	Range 36 E	County LEA				
Actual Footage Location of Well: 915 feet from the NORTH line and 990 feet from the EAST line								
Ground Level Elev. 3571'	Producing Formation QUEEN		Pool EMMONT VATES TRRS. QN.			Dedicated Acreage: 160 Acres		

1. Outline the acreage dedicated to the subject well by colored pencil or hachure marks on the plat below.
2. If more than one lease is dedicated to the well, outline each and identify the ownership thereof (both as to working interest and royalty).
3. If more than one lease of different ownership is dedicated to the well, have the interests of all owners been consolidated by communitization, unitization, force-pooling, etc?

☐ Yes ☐ No If answer is "yes," type of consolidation _____

If answer is "no," list the owners and tract descriptions which have actually been consolidated. (Use reverse side of this form if necessary.) _____

No allowable will be assigned to the well until all interests have been consolidated (by communitization, unitization, forced-pooling, or otherwise) or until a non-standard unit, eliminating such interests, has been approved by the Commission.

<p>160 ACRE NSP GRANTED ON NMOC ADMINISTRATIVE ORDER NSP - 1113</p>		<p>915' 990'</p>	
<p>NMOC (3) FILE</p>			

CERTIFICATION

I hereby certify that the information contained herein is true and complete to the best of my knowledge and belief.

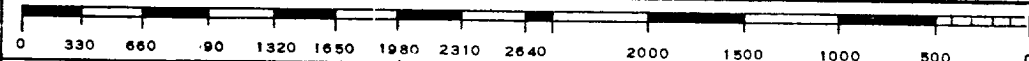
Name
Ben A. Lee
Position
ADM. SUPER.
Company
CONTINENTAL OIL CO.
Date
11-7-78

I hereby certify that the well location shown on this plat was plotted from field notes of actual surveys made by me or under my supervision, and that the same is true and correct to the best of my knowledge and belief.

Date Surveyed

Registered Professional Engineer
and/or Land Surveyor

Certificate No.



RECEIVED

NOV 8 1978

COL COMMISSIONER COMA
10000 N. B.