



© Copyrighted Reproduction Prohibited

IP (Seven Rivers-Queen) Perfs 3386-3762' F 1200 MCFGPD.
Pot based on 24 hr test thru 30/64" chk. GOR (NR); gty (NR);
CP Pkr; TP (NR)

CONTR	Verna #14	OPRS ELEV	3589'	GL	PD	3950'	RT
-------	-----------	-----------	-------	----	----	-------	----

F.R. 12-11-78
(Yates-Seven Rivers)
12-19-78 TD 3950'; Logging
12-22-78 TD 3950'; PBD 3892'; SI
12-29-78 TD 3950'; PBD 3892'; Prep Treat
Perf (Seven Rivers-Queen) 3386-3762'
w/2 SPF
1-10-79 TD 3950'; PBD 3892'; Tstg
Acid (3386-3762') 1400 gals (15%)
Frac (3386-3762') 42,000 gals + 43,750# sd
Flwd 661 MCFGPD + 4 BW in 14 hrs thru
18/64" chk, TP 160# (3386-3762')
1-17-79 TD 3950'; PBD 3892'; WOSP
Flwd 1122 MCFGPD in 16 hrs thru 18/64"
chk, TP 125# (3386-3762')

2-1-11 NM

OIL CONSERVATION DIVISION

P.O. Box 2088
Santa Fe, New Mexico 87504-2088

SIMULTANEOUS DEDICATED

WELL LOCATION AND ACREAGE DEDICATION PLAT

All Distances must be from the outer boundaries of the section

DISTRICT I
P.O. Box 1980, Hobbs, NM 88240

DISTRICT II
P.O. Drawer DD, Artesia, NM 88210

DISTRICT III
1000 Rio Brazos Rd., Aztec, NM 87410

Operator CHEVRON U.S.A. INC.			Lease ARNOTT RAMSAY (NCT-D)		Well No. 15
Unit Letter B	Section 33	Township 21S	Range 36E	County LEA	
Actual Footage Location of Well: 810 feet from the NORTH line and 1980 feet from the EAST line					
Ground level Elev.	Producing Formation YATES/ SEVEN RIVERS		Pool EUMONT GAS		Dedicated Acreage: 320 Acres

1. Outline the acreage dedicated to the subject well by colored pencil or hatchure marks on the plat below.

2. If more than one lease is dedicated to the well, outline each and identify the ownership thereof (both as to working interest and royalty).

3. If more than one lease of different ownership is dedicated to the well, have the interest of all owners been consolidated by communitization, unitization, force-pooling, etc.?

☐ Yes

☐ No

If answer is "yes" type of consolidation

If answer is "no" list the owners and tract descriptions which have actually been consolidated. (Use reverse side of this form if necessary.)

No allowable will be assigned to the well until all interests have been consolidated (by communitization, unitization, forced-pooling, or otherwise) or until a non-standard unit, eliminating such interest, has been approved by the Division.

OPERATOR CERTIFICATION

I hereby certify that the information contained herein is true and complete to the best of my knowledge and belief.

Signature

P.R. Matthews

Printed Name

P.R. MATTHEWS

Position

TECHNICAL ASSISTANT

Company

CHEVRON U.S.A. INC.

Date

7-8-92

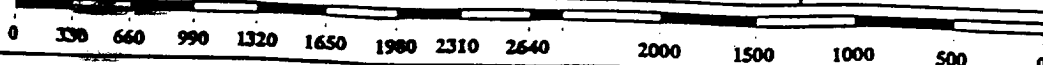
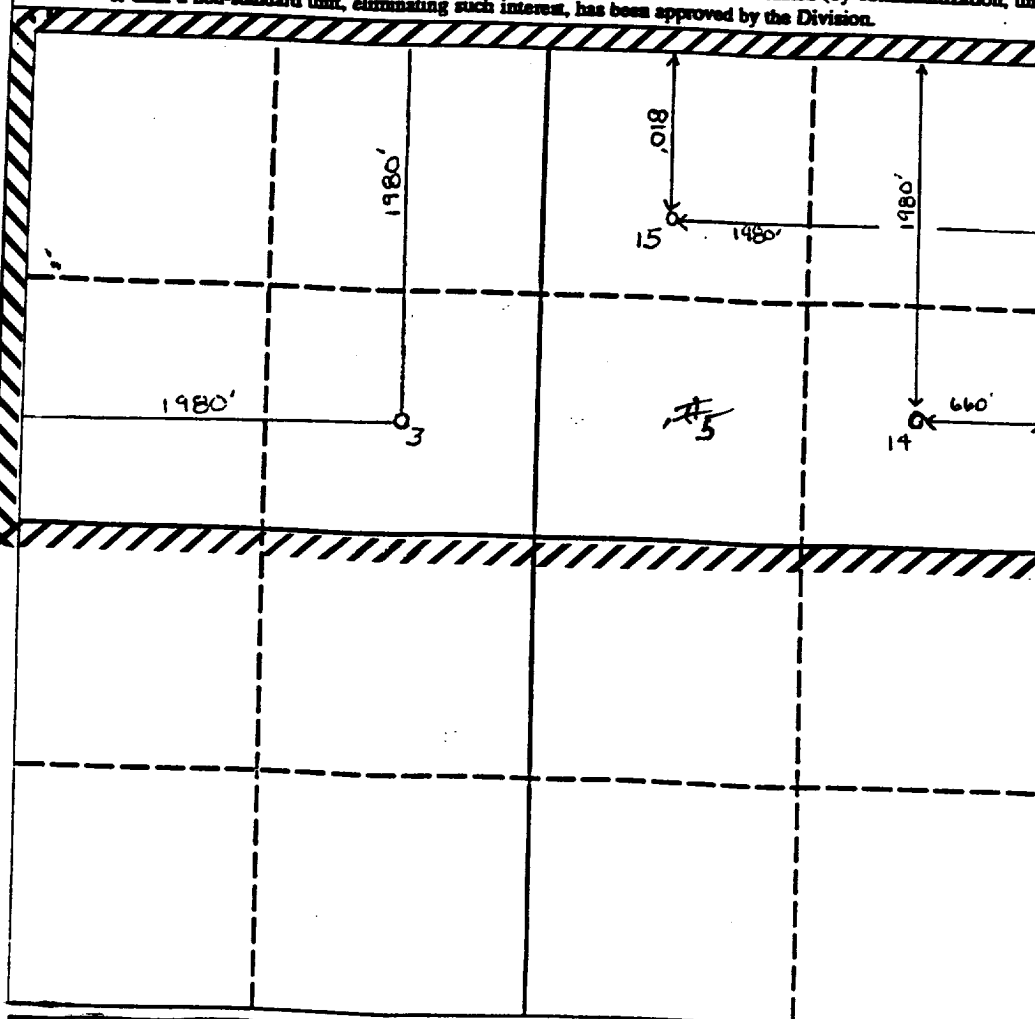
SURVEYOR CERTIFICATION

I hereby certify that the well location shown on this plat was plotted from field notes of actual surveys made by me or under my supervision, and that the same is true and correct to the best of my knowledge and belief.

Date Surveyed

Signature & Seal of
Professional Surveyor

Certificate No.



**NEW MEXICO OIL CONSERVATION COMMISSION
WELL LOCATION AND ACREAGE DEDICATION PLAT**

Form C-102
Supersedes C-126
Effective 1-1-65

All distances must be from the outer boundaries of the Section.

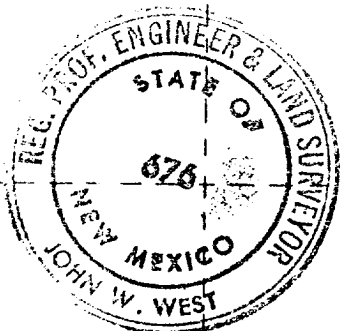
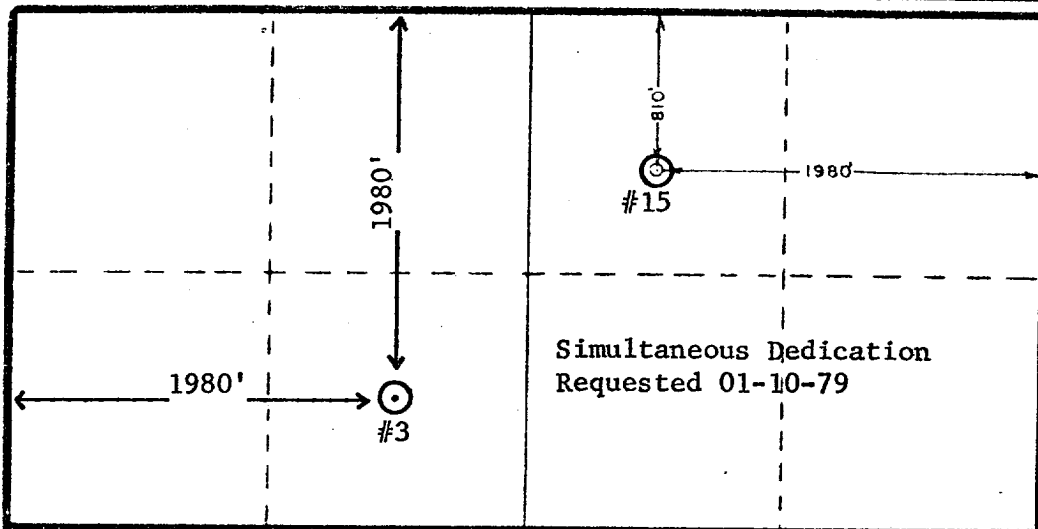
Operator Gulf Oil Corp.			Lease Arnot Ramsay NCT-D		Well No. 15
Unit Letter B	Section 33	Township 21 South	Range 36 East	County Lea	
Actual Footage Location of Well:					
810		feet from the	North	line and	1980
				feet from the	East
Ground Level Elev. 3589.2	Producing Formation Queen		Pool Eumont Gas - 7 Rivers	Dedicated Acreage: 320 Acres	

1. Outline the acreage dedicated to the subject well by colored pencil or hachure marks on the plat below.
2. If more than one lease is dedicated to the well, outline each and identify the ownership thereof (both as to working interest and royalty).
3. If more than one lease of different ownership is dedicated to the well, have the interests of all owners been consolidated by communitization, unitization, force-pooling, etc?

☐ Yes ☐ No If answer is "yes," type of consolidation _____

If answer is "no," list the owners and tract descriptions which have actually been consolidated. (Use reverse side of this form if necessary.) _____

No allowable will be assigned to the well until all interests have been consolidated (by communitization, unitization, forced-pooling, or otherwise) or until a non-standard unit, eliminating such interests, has been approved by the Commission.
NSP-607



CERTIFICATION

I hereby certify that the information contained herein is true and complete to the best of my knowledge and belief.

N. P. Sikes, Jr.

Name

N. P. SIKES, JR.

Position

Area Engineer

Company

GULF OIL CORPORATION

Date

01-17-79

I hereby certify that the well location shown on this plat was plotted from field notes of actual surveys made by me or under my supervision, and that the same is true and correct to the best of my knowledge and belief.

Date Surveyed

November 30, 1978

Registered Professional Engineer and/or Land Surveyor

John W. West

Certificate No. **John W. West 676**
Ronald J. Eidson 3239

0 330 660 990 1320 1650 1980 2310 2640 2000 1500 1000 500 0

RECEIVED

SEP 18 1979

OIL CONSERVATION COMM.
RICH. H. M.