

NEW MEXICO OIL CONSERVATION COMMISSION
WELL LOCATION AND ACREAGE DEDICATION PLAT

Form C-102
Supersedes C-128
Effective 1-1-65

All distances must be from the outer boundaries of the Section.

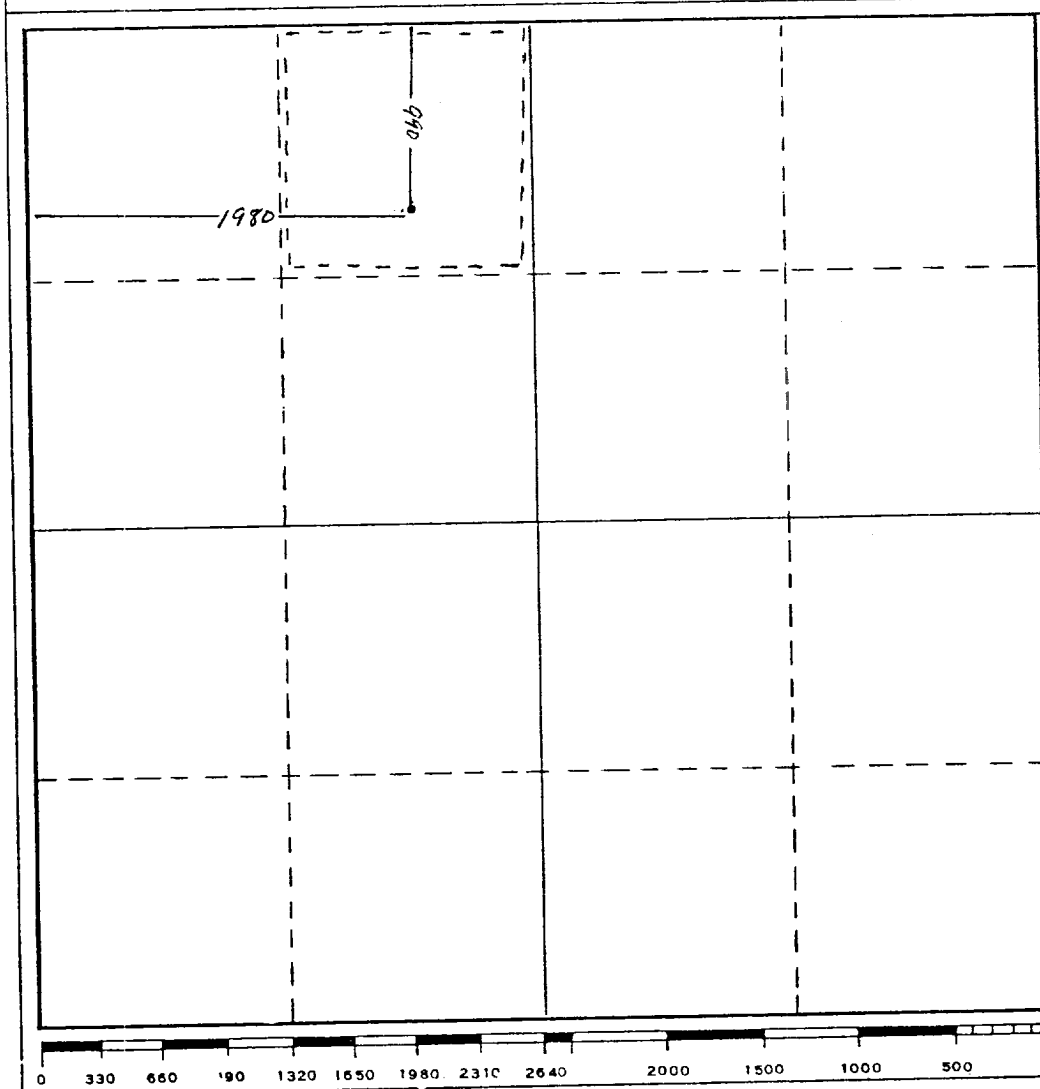
Operator <i>Conoco Inc.</i>			Lease <i>Hawk A</i>		Well No. <i>7</i>
Unit Letter <i>C</i>	Section <i>8</i>	Township <i>21 S</i>	Range <i>37 E</i>	County <i>Lea</i>	
Actual Footage Location of Well: <i>990</i> feet from the <i>N</i> line and <i>1980</i> feet from the <i>W</i> line					
Ground Level Elev. <i>3551' DF</i>	Producing Formation <i>Blinberry</i>		Pool <i>Blinberry Oil & Gas</i>		Dedicated Acreage: <i>40</i> Acres

- Outline the acreage dedicated to the subject well by colored pencil or hatchure marks on the plat below.
- If more than one lease is dedicated to the well, outline each and identify the ownership thereof (both as to working interest and royalty).
- If more than one lease of different ownership is dedicated to the well, have the interests of all owners been consolidated by communitization, unitization, force-pooling, etc?

☐ Yes ☐ No If answer is "yes," type of consolidation _____

If answer is "no," list the owners and tract descriptions which have actually been consolidated. (Use reverse side of this form if necessary.) _____

No allowable will be assigned to the well until all interests have been consolidated (by communitization, unitization, forced-pooling, or otherwise) or until a non-standard unit, eliminating such interests, has been approved by the Commission.



CERTIFICATION

I hereby certify that the information contained herein is true and complete to the best of my knowledge and belief.

Name
John A. Brantford
Position
Administrative Supervisor
Company
Conoco Inc.
Date
2/21/80

I hereby certify that the well location shown on this plat was plotted from field notes of actual surveys made by me or under my supervision, and that the same is true and correct to the best of my knowledge and belief.

Date Surveyed

Registered Professional Engineer and/or Land Surveyor

Certificate No.