

UNITED STATES
DEPARTMENT OF THE INTERIOR
BUREAU OF LAND MANAGEMENT

N^o Oil C
1980
HOL NM

FORM APPROVED
Budget Bureau No. 1004-0135
Expires: March 31, 1993

5. Lease Designation and Serial No.

NM90161

6. If Indian, Allottee or Tribe Name

7. If Unit or CA, Agreement Designation

8. Well Name and No.

Hawk B-1 Well # 16

9. API Well No.

30-025-26601

10. Field and Pool, or Exploratory Area

Blinebry, Tubb, Drinkard

11. County or Parish, State

Lea County, New Mexico

SUNDRY NOTICES AND REPORTS ON WELLS

Do not use this form for proposals to drill or to deepen or reentry to a different reservoir.
Use "APPLICATION FOR PERMIT—" for such proposals

SUBMIT IN TRIPLICATE

1. Type of Well

☒ Oil Well ☐ Gas Well ☐ Other

2. Name of Operator

CONOCO INC.

3. Address and Telephone No.

10 DESTA DR. STE. 100W, MIDLAND, TX. 79705-4500 (915) 686-5424

4. Location of Well (Footage, Sec., T. R. M. or Survey Description)

N, Section 8, T-21-S, R-37-E

CHECK APPROPRIATE BOX(S) TO INDICATE NATURE OF NOTICE, REPORT, OR OTHER DATA

TYPE OF SUBMISSION

☒ Notice of Intent
☐ Subsequent Repon
☐ Final Abandonment Notice

TYPE OF ACTION

☐ Abandonment
☐ Recompletion
☐ Plugging Back
☐ Casing Repair
☒ Altering Casing
☐ Other Downhole Commingle
☐ Change of Plans
☐ New Construction
☐ Non-Routine Fracrunng
☐ Water Shut-Off
☐ Conversion to Injection
☐ Dispose Water

Note: Repon result of multiple completion on Wd1
Completion or Recompletion Report and Log form.)

13. Describe Proposed or Completed Operations (Clearly state all pertinent details, and give pertinent dates, including estimated date of starting any proposed work. If well is directionally drilled, give subsurface locations and measured and true vertical depths for all markers and zones pertinent to this work.)*

It is proposed to downhole commingle the Blinebry, Tubb and Drinkard production in this well according to the attached OCD C-107-A application.

SUBJECT TO
LIKE APPROVAL
BY STATE

RECEIVED
1997 SEP -5 A 10:12
BUREAU OF LAND MANAGEMENT
ROSWELL OFFICE

14. I hereby certify that the foregoing is true and correct

Signed

Jerry W. Hoover

Title

Sr. Conservation Coordinator

Date

9/4/97

(This space for Federal or State office use)

Approved by

DAVID B. GLASS

Title

PETROLEUM ENGINEER

Date

SEP 08 1997

DISTRICT I

P.O. Box 1980, Hobbs, NM 88241-1980

DISTRICT II

811 South First St., Artesia, NM 88210-2835

DISTRICT III

1000 Rio Brazos Rd., Aztec, NM 87410-1693

State of New Mexico
Energy, Minerals and Natural Resources Department

OIL CONSERVATION DIVISION

2040 S. Pacheco
Santa Fe, New Mexico 87505-6429Form C-107-A
New 3-12-96

APPROVAL PROCESS:

☒ Administrative ☐ Hearing

EXISTING WELLBORE

☒ YES ☐ NO

APPLICATION FOR DOWNHOLE COMMINGLING

COURT OF LAND RIGHTS
Operator ROSTWELL OFFICE

10 Desta Dr., Ste 100W, Midland, TX 79705-4500

Hawk B-1

16

N 8 T-21-S, R-37-E

Lea

Lease

Well No

Unit Ltr Sec Twp Rge

County

OGRID NO. 005073 Property Code 003022 API NO. 30-025-26601 Spacing Unit Lease Types: (check 1 or more)

Federal ☒ State ☐ (and/or) Fee ☐

The following facts are submitted in support of downhole commingling:	Upper Zone	intermediate Zone	Lower Zone
1. Pool Name and Pool Code	Blinebry Oil and Gas - 06660	Tubb - 60240	Drinkard - 19190
2. TOP and Bottom of Pay Section (Perforations)	5652 - 5997'	6304 - 6432'	6533 - 6790'
3. Type of production (Oil or Gas)	Oil	Oil	Oil
4. Method of Production (Flowing or Artificial Lift)	Bean Pump	Bean Pump	Bean Pump
5. Bottom hole Pressure	a (Current)	a.	a.
Oil Zones - Artificial Lift: Estimated Current	400 psia	800 psia	500 psia
Gas & Oil - Flowing: Measured Current	b (Original)	b.	b.
All Gas Zones: Estimated Or Measured Original	2400	2600	2750
6. Oil Gravity (*API) or Gas BTU Content	38.7	36	38.7
7. Producing or Shut-In?	Producing	to be completed	Producing
Production Marginal? (yes or no)	Yes	Yes	Yes
• If Shut-In give date and oil/gas/water rates of last production	Date Rates	Date Incremental Production by Subtraction Rates	Date Rates
Note: For new zones with no production history, applicant shall be required to attach production estimates and supporting data.			
• If Producing, give date and oil/gas/water rates of recent test (within 60 days)	Date Rates Mid-year average producing rates - see attached table	Date Rates	Date Rates Mid-year average producing rates - see attached table

Hawk B-1 No.16 Downhole Commingle Application

Blinebry-Drinkard Production Forecast

DECLINE (%/YR) Oil 0.0943
LOSS RATIO Oil 0.9057

DECLINE (%/YR) Gas 0.0881
LOSS RATIO Gas 0.9119

INITIAL RATE (BOPD) 3.5
INITIAL RATE (MCFD) 48.0

NO.MONTHS 1ST YEAR 12
ECON LIMIT (BOPD) 1

Blinebry and Drinkard production allocated as per OCD commingling order DHC-421 dated 8/30/83 for Hawk B-1 No.16

Zone	Oil Percentage	Gas Percentage
Blinebry	15	4
Drinkard	85	96

Year	Forecasted Formation	Oil Annual Decline Constant	Gas Annual Decline Constant	Blinebry Forecasted Oil Production Daily Average (BOPD)	Blinebry Forecasted Gas Production Daily Average (MCFPD)	Drinkard Forecasted Oil Production Daily Average (BOPD)	Drinkard Forecasted Gas Production Daily Average (MCFPD)
12/1997	Blinebry-Drinkard	0.0943	0.0881	0.5	1.8	2.8	44.0
12/1998	Blinebry-Drinkard	0.0943	0.0881	0.5	1.7	2.6	40.1
12/1999	Blinebry-Drinkard	0.0943	0.0881	0.4	1.5	2.3	36.6
12/2000	Blinebry-Drinkard	0.0943	0.0881	0.4	1.4	2.1	33.4
12/2001	Blinebry-Drinkard	0.0943	0.0881	0.3	1.3	1.9	30.4
12/2002	Blinebry-Drinkard	0.0943	0.0881	0.3	1.2	1.7	27.8
12/2003	Blinebry-Drinkard	0.0943	0.0881	0.3	1.1	1.6	25.3
12/2004	Blinebry-Drinkard	0.0943	0.0881	0.2	1.0	1.4	23.1
12/2005	Blinebry-Drinkard	0.0943	0.0881	0.2	0.9	1.3	21.1
12/2006	Blinebry-Drinkard	0.0943	0.0881	0.2	0.8	1.2	19.2
12/2007	Blinebry-Drinkard	0.0943	0.0881	0.2	0.7	1.1	17.5
12/2008	Blinebry-Drinkard	0.0943	0.0881	0.2	0.7	1.0	16.0
12/2009	Blinebry-Drinkard	0.0943	0.0881	0.2	0.6	0.9	14.6
12/2010	Blinebry-Drinkard	0.0943	0.0881	0.1	0.6	0.8	13.3
12/2011	Blinebry-Drinkard	0.0943	0.0881	0.1	0.5	0.7	12.1
12/2012	Blinebry-Drinkard	0.0943	0.0881	0.1	0.5	0.6	11.0
12/2013	Blinebry-Drinkard	0.0943	0.0881	0.1	0.4	0.6	10.1
12/2014	Blinebry-Drinkard	0.0943	0.0881	0.1	0.4	0.5	9.2
12/2015	Blinebry-Drinkard	0.0943	0.0881	0.1	0.3	0.5	8.4
12/2016	Blinebry-Drinkard	0.0943	0.0881	0.1	0.3	0.4	7.6
12/2017	Blinebry-Drinkard	0.0943	0.0881	0.1	0.3	0.4	7.0



STATE OF NEW MEXICO
ENERGY AND MINERALS DEPARTMENT
OIL CONSERVATION DIVISION

TONEY ANAYA
GOVERNOR

August 30, 1983

POST OFFICE BOX 2088
STATE LAND OFFICE BUILDING
SANTA FE, NEW MEXICO 87501
(505) 827-5800

Administrative Order No. DHC-421

Conoco Inc.
P. O. Box 460
Hobbs, New Mexico 88240

Attention: M. K. Mosley

Re: Hawk B-1 Well No. 16, SE/4 SW/4,
Sec. 8, T-21-S, R-37-E, Lea
County, New Mexico; Drinkard
and Blinebry Oil and Gas Pools

Gentlemen:

Reference is made to your recent application for an exception to Rule 303-A of the Division Rules and Regulations for the subject dually completed well to permit the removal of the down-hole separation equipment and to commingle the production from both pools in the wellbore.

It appearing that the subject well qualifies for approval for such exception pursuant to the provisions of Rule 303-C, and that reservoir damage or waste will not result from such downhole commingling, and correlative rights will not be violated thereby, you are hereby authorized to commingle the production as described above and Division Order No. MC-2693 Form C-107, dated August 1, 1980, which authorized the dual completion and required separation of the two zones, is hereby placed in abeyance.

In accordance with the provisions of Rule 303.C.4., total commingled oil production from the subject well shall not exceed 40 barrels per day, and total water production from the well shall not exceed ~~40~~ barrels per day. The maximum amount of gas which may be produced daily from the well shall be determined by multiplying 4,000 by top unit allowable for the Blinebry Oil and Gas Pool.

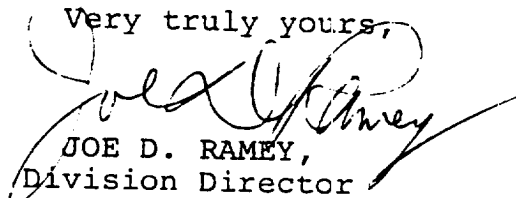
*changed on the original order by
Gilbert Quintana of NMO CD
9-2-83*

Assignment of allowable to the well and allocation of production from the well shall be on the following basis:

Drinkard Pool: Oil 85%, Gas 96%
Blinebry Pool: Oil 15%, Gas 4%

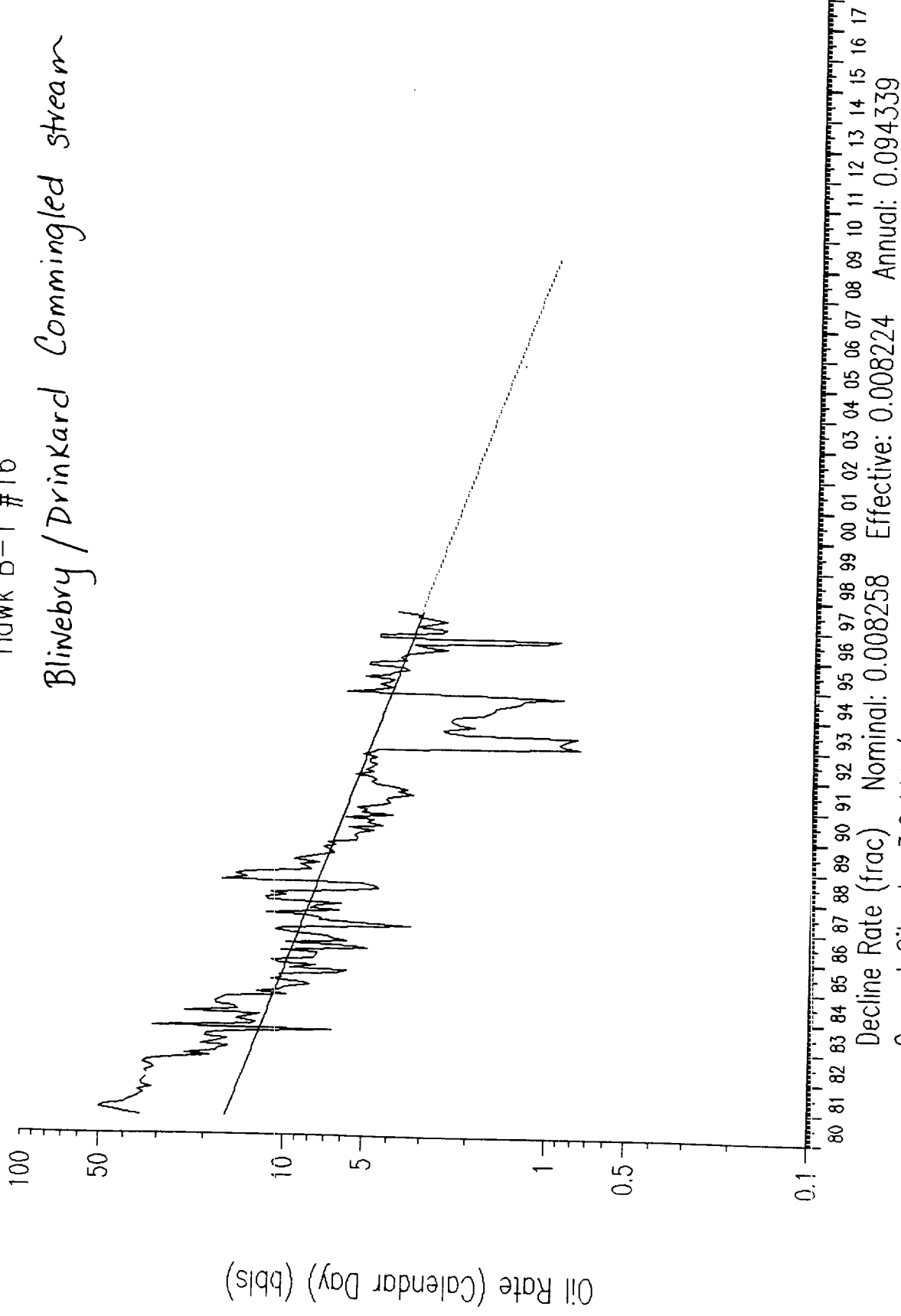
Pursuant to Rule 303-C 5, the commingled authority granted by this order may be rescinded by the Division Director if, in his opinion, conservation is not being best served by such commingling.

Very truly yours,


JOE D. RAMEY,
Division Director

Hawk B-1 #16

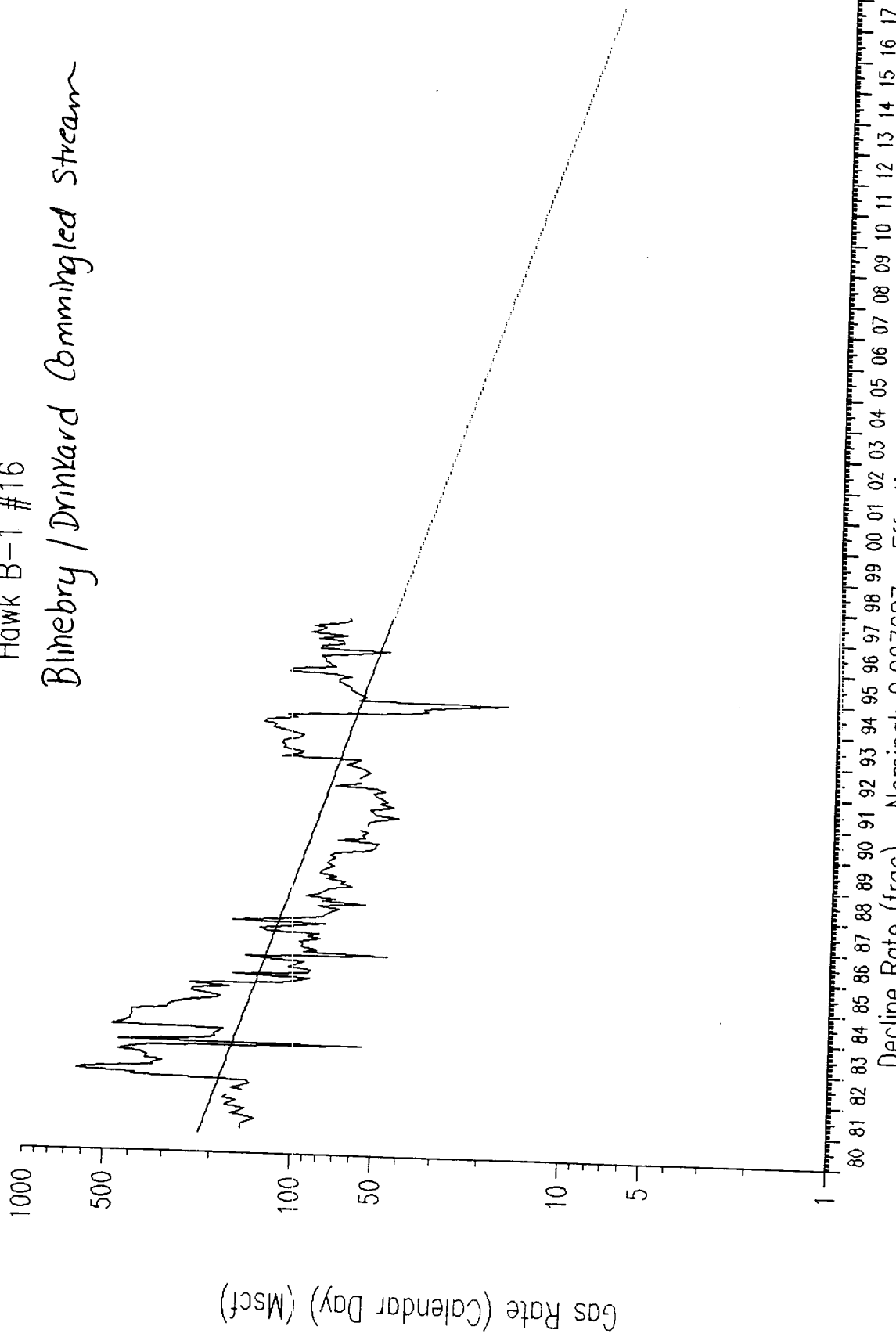
Blinebry / Drinkard Commingled stream



Decline Rate (frac) Nominal: 0.008258 Effective: 0.008224 Annual: 0.094339
Current Oil rate: 3.2 bbls/d
Economic Limit: 1.0 bbls/d
Cumulative Oil Produced: 65.1 Mbbls
Remaining Reserves: 8.1 Mbbls
Total Reserves: 73.1 Mbbls - At the Economic Limit

Hawk B-1 #16

Blinebry / Drinkard Commingled Stream



Decline Rate (frac) Nominal: 0.007687 Effective: 0.007658 Annual: 0.088122

Current Gas rate: 46.00 Mscf/d

Economic Limit: 1.000 Mscf/d

Cumulative Gas Produced: 800.92 MMscf

Remaining Reserves: 153.2 MMscf

Total Reserves: 954.2 MMscf - At End of Forecast

District IV
PO Box 2088, Santa Fe. NM 87504-2088

PO Box 2088
Santa Fe, NM 87504-2088

Submit to Appropriate District Office
State Lease - 4 Copies
Fee Lease - 3 Copies

☐ AMENDED REPORT

WELL LOCATION AND ACREAGE DEDICATION PLAT

API Number 30-025-26601		2 Pool Code 06660	3 Pool Name Blineberry	
4 Property Code	5 Property Name Hawk B-1			6 Well Number 16
7 OGRID No. 005073	8 Operator Name Conoco Inc., 10 Desta Drive, Ste. 100W, Midland, TX 79705-4500			9 Elevation 3502'
10 Surface Location				

10 Surface Location

10 Surface Location									
UL or lot no.	Section	Township	Range	Lot Idn	Feet from the	North/South line	Feet from the	East/West line	County
N	8	21S	37E		660	South	1980	West	Lea

11 Bottom Hole Location If Different From Surface		Section	1980
Range	Lot Id	Foot front	

11 Bottom Hole Location If Different From Surface									
UL or lot no.	Section	Township	Range	Lot Idn	Feet from the	North/South line	Feet from the	East/West line	County
12 Dedicated Acres 40	13 Joint or Infill	14 Consolidation Code		15 Order No.					

NO ALLOWABLE WILL BE ASSIGNED TO THIS COMPLETION UNTIL ALL INTERESTS HAVE BEEN CONSOLIDATED
OR A NON-STANDARD UNIT HAS BEEN APPROVED BY THE DIVISION


16

OR A NON-STANDARD UNIT HAS BEEN APPROVED BY

A 4x4 grid is shown. In the bottom-left cell, there is a point marked with a small circle. A horizontal arrow points from the left edge of the grid to this point, labeled '1980''. A vertical arrow points from the bottom edge of the grid to this point, labeled '460''. The bottom-left corner of the grid is shaded with a dense cross-hatch pattern.

17 OPERATOR CERTIFICATION

I hereby certify that the information contained herein is true and complete to the best of my knowledge and belief


Signature

Jerry W. Hoover

Printed Name Sr. Conservation Coordinator

Title 8/29/97

Date _____

18 SURVEYOR CERTIFICATION

I hereby certify that the well location shown on this plat was plotted from field notes of actual surveys made by me or under my supervision, and that the same is true and correct to the best of my belief.

Date of Survey

Signature and Seal of Professional Surveyor:

Certificate Number

MEXICO OIL CONSERVATION COMMISSION
WELL LOCATION AND ACREAGE DEDICATION PLAT

Form C-102
 Supersedes C-101
 Effective 1-4-65

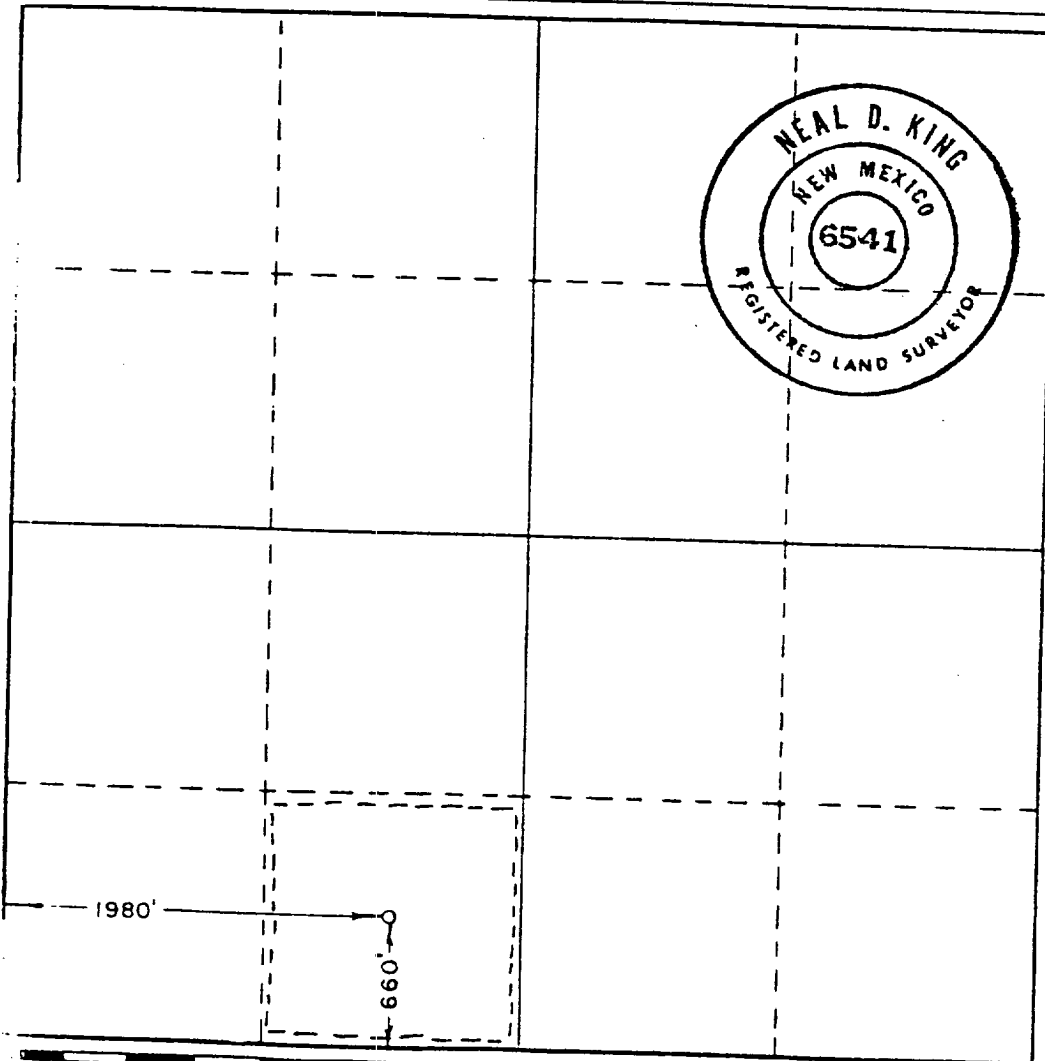
All distances must be from the outer boundaries of the Section

Operator Continental Oil Company			Lease Hawk B 1		Well No. 16
Grid Letter N	Section 8	Township 21 South	Range 37 East	County Lea	
Footnote Location of Well: 660 feet from the South line and 1980 feet from the West line Grid Level Elev. 3502.8 Producing Formation Drinkard Pool Drinkard Estimated Acreage 40					

- 1 Outline the acreage dedicated to the subject well by colored pencil or hatchure marks on the plat below.
- 2 If more than one lease is dedicated to the well, outline each and identify the ownership thereof (both as to working interest and royalty).
- 3 If more than one lease of different ownership is dedicated to the well, have the interests of all owners been consolidated by communitization, unitization, force-pooling, etc?
☐ Yes ☐ No If answer is "yes," type of consolidation _____

If answer is "no," list the owners and tract descriptions which have actually been consolidated. (Use reverse side of this form if necessary.) _____

No allowable will be assigned to the well until all interests have been consolidated (by communitization, unitization, forced-pooling, or otherwise) or until a non-standard unit, eliminating such interests, has been approved by the Commission.



CERTIFICATION

I hereby certify that the information contained herein is true and complete to the best of my knowledge and belief.

Name *Wm A. Butterfield*
 Position *Administrative Supervisor*
 Company *Conoco Inc.*
 Date *11/12/79*

I hereby certify that the well location shown on this plat was plotted from field notes of actual surveys made by me or under my supervision, and that the same is true and correct to the best of my knowledge and belief.

Date Surveyed *September 27, 1979*
 Registered Professional Engineer and/or Land Surveyor
Neal D. King R.L.S.
 Certificate No. _____

Conoco, Inc.
Hawk B-1 Well #16
Lea County , New Mexico

Offset Operators in the Monument Blinebry, Tubb, & Drinkard Pools

Township 21 South,
Range 37 East

Conoco

Sec 8 J,K,L M, O

Texaco Exploration & Production Co.
PO Box 1404
Houston, Texas 77251-1404

Sec 17 C,D

J.H. Hendrix
PO Box 910
Eunice, New Mexico 88231

Sec 17 B