

NEW MEXICO OIL CONSERVATION COMMISSION
WELL LOCATION AND ACREAGE DEDICATION PLAT

Form C-102
Supersedes C-128
Effective 1-1-65

All distances must be from the outer boundaries of the Section

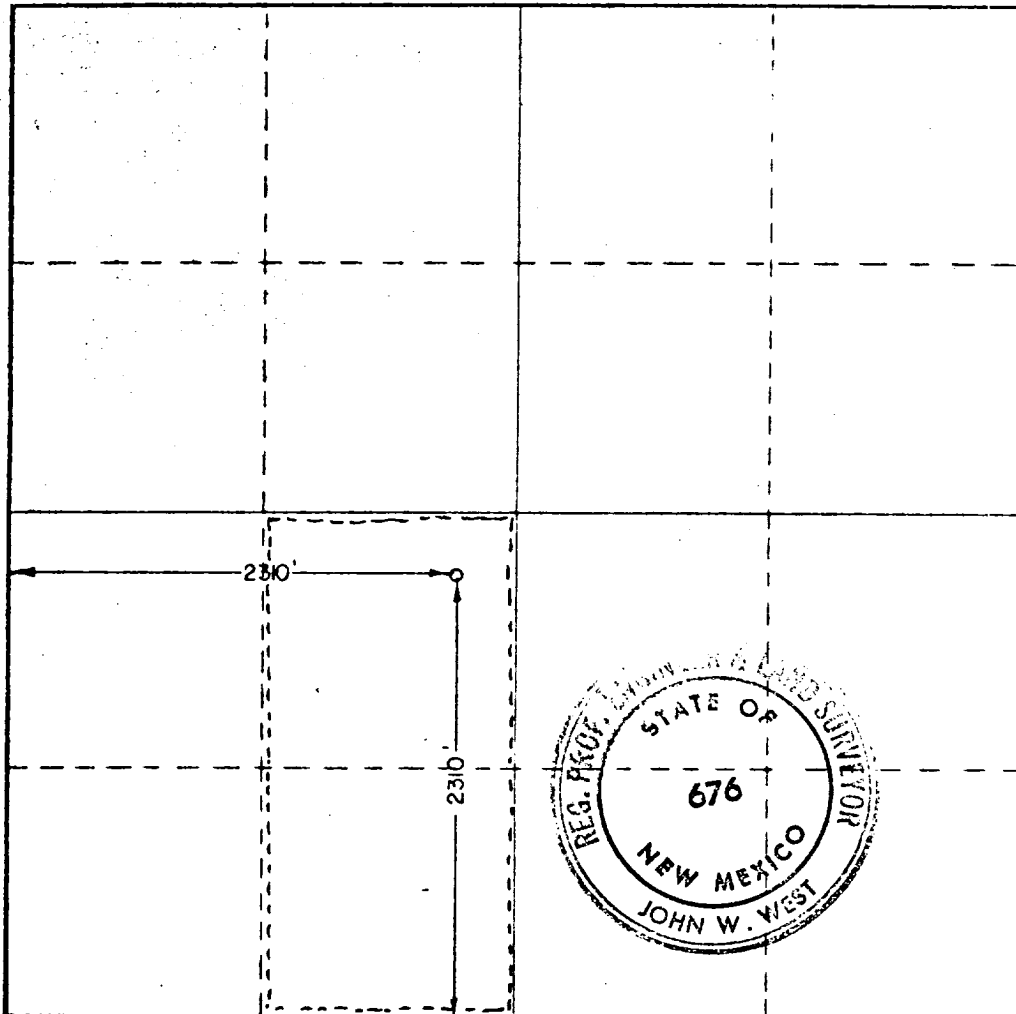
Operator CONOCO, Inc.,			Lease State "D"		Well No. 15
Unit Letter K	Section 11	Township 21 South	Range 36 East	County Lea	
Actual Footage Location of Well: 2310 feet from the South line and 2310 feet from the West line					
Ground Level Elev. 3574.1	Producing Formation Blinberry/Drinkard		Pool Oil Center Blinberry/Hardy Drinkard		Dedicated Acreage: 80 Acres

1. Outline the acreage dedicated to the subject well by colored pencil or hatchure marks on the plat below. *Blinberry*
2. If more than one lease is dedicated to the well, outline each and identify the ownership thereof (both as to working interest and royalty).
3. If more than one lease of different ownership is dedicated to the well, have the interests of all owners been consolidated by communitization, unitization, force-pooling, etc?

☐ Yes ☐ No If answer is "yes," type of consolidation _____

If answer is "no," list the owners and tract descriptions which have actually been consolidated. (Use reverse side of this form if necessary.) _____

No allowable will be assigned to the well until all interests have been consolidated (by communitization, unitization, forced-pooling, or otherwise) or until a non-standard unit, eliminating such interests, has been approved by the Commission.



CERTIFICATION

I hereby certify that the information contained herein is true and complete to the best of my knowledge and belief.

Wm. A. Butterfield
Name
Administrative Supervisor
Position
Conoco, Inc.
Company
8/19/80
Date

I hereby certify that the well location shown on this plat was plotted from field notes of actual surveys made by me or under my supervision, and that the same is true and correct to the best of my knowledge and belief.

Date Surveyed
July 16, 1980

Registered Professional Engineer
and/or Land Surveyor

John W. West
Certificate No. **JOHN W. WEST 676**
PATRICK A. ROMERO 6863
Revised 1-1-65 2230

0 330 660 990 1320 1650 1980 2310 2640 2000 1500 1000 500

RECEIVED

AUG 21 1980

U.S. DEPARTMENT OF AGRICULTURE

RECEIVED

AUG 27 1980

U.S. DEPARTMENT OF AGRICULTURE

NEW MEXICO OIL CONSERVATION COMMISSION
WELL LOCATION AND ACREAGE DEDICATION PLAT

Form C-102
Supersedes C-128
Effective 1-1-65

All distances must be from the outer boundaries of the Section

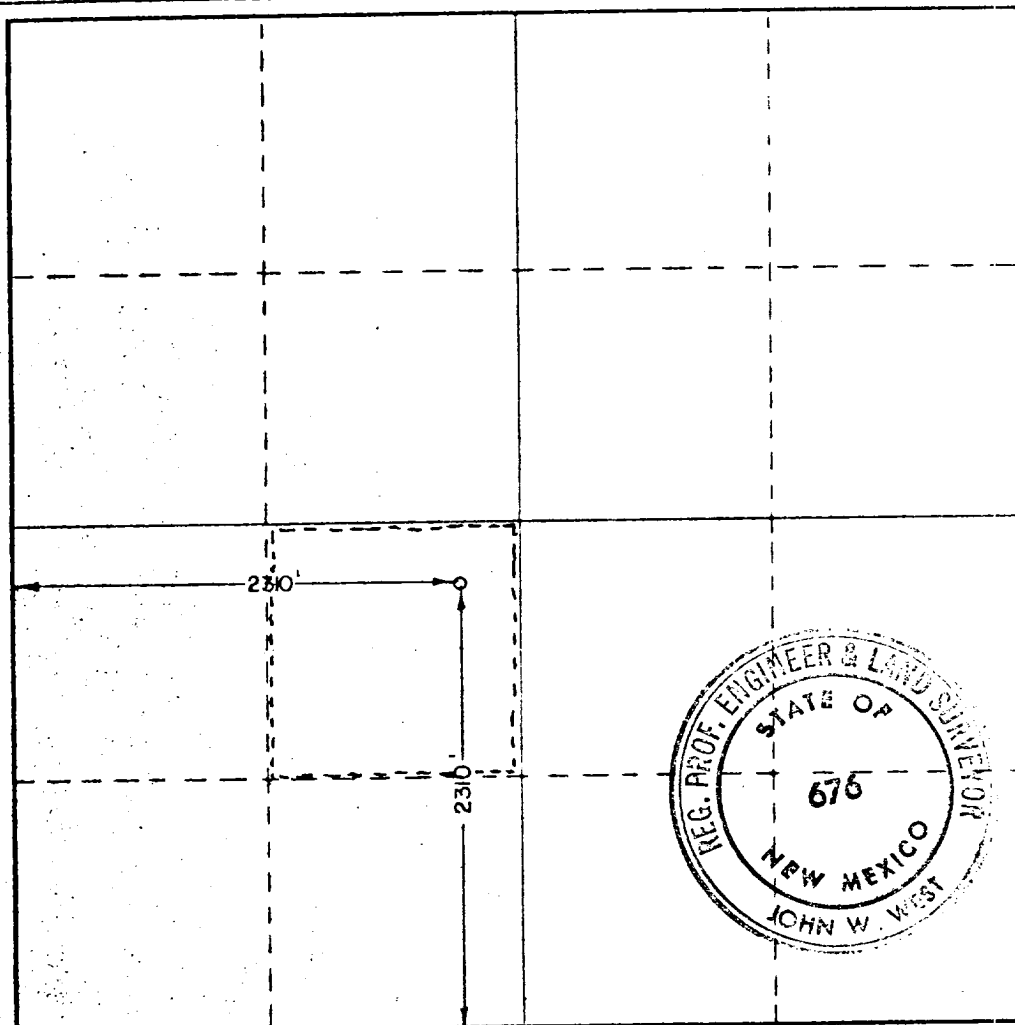
Operator CONOCO, Inc.,			Lease State "D"		Well No. 15
Unit Letter K	Section 11	Township 21 South	Range 36 East	County Lea	
Actual Footage Location of Well: 2310 feet from the South line and 2310 feet from the West line					
Ground Level Elev. 3574.1	Producing Formation Blinberry / Drinkard		Pool Oil Center Blinberry / Hardy Drinkard		Dedicated Acreage: 40 Acres

1. Outline the acreage dedicated to the subject well by colored pencil or hachure marks on the plat below.
2. If more than one lease is dedicated to the well, outline each and identify the ownership thereof (both as to working interest and royalty).
3. If more than one lease of different ownership is dedicated to the well, have the interests of all owners been consolidated by communitization, unitization, force-pooling, etc?

☐ Yes ☐ No If answer is "yes," type of consolidation _____

If answer is "no," list the owners and tract descriptions which have actually been consolidated. (Use reverse side of this form if necessary.) _____

No allowable will be assigned to the well until all interests have been consolidated (by communitization, unitization, forced-pooling, or otherwise) or until a non-standard unit, eliminating such interests, has been approved by the Commission.



CERTIFICATION

I hereby certify that the information contained herein is true and complete to the best of my knowledge and belief.

Name
W. A. Butterfield
Position
Administrative Supervisor
Company
CONOCO Inc.
Date
8/25/80

I hereby certify that the well location shown on this plat was plotted from field notes of actual surveys made by me or under my supervision, and that the same is true and correct to the best of my knowledge and belief.

Date Surveyed
July 16, 1980

Registered Professional Engineer and/or Land Surveyor

John W. West
Certificate No. **JOHN W. WEST 676**
PATRICK A. ROMERO 6663
Ronald J. Eidson 3239

0 330 660 990 1320 1650 1980 2310 2640 2970 3300 3630 3960 4290 4620 4950 5280 5610 5940 6270 6600