

30-025-27034

NO. OF COPIES RECEIVED	
DISTRIBUTION	
SANTA FE	
FILE	
U.S.G.S.	
LAND OFFICE	
OPERATOR	

NEW MEXICO OIL CONSERVATION COMMISSION

Form C-101
Revised 1-1-65

5A. Indicate Type of Lease STATE <input checked="" type="checkbox"/> FEE <input type="checkbox"/>
5. State Oil & Gas Lease No. 8-1535

APPLICATION FOR PERMIT TO DRILL, DEEPEN, OR PLUG BACK

1a. Type of Work b. Type of Well OIL WELL <input checked="" type="checkbox"/> GAS WELL <input type="checkbox"/> OTHER <input type="checkbox"/> 2. Name of Operator CONTINENTAL OIL COMPANY - <i>Canoco Inc.</i> 3. Address of Operator P. O. Box 460, Hobbs, N.M. 88240 4. Location of Well UNIT LETTER <i>NV</i> LOCATED <i>1650</i> FEET FROM THE <i>West</i> LINE AND <i>330</i> FEET FROM THE <i>South</i> LINE OF SEC. <i>1</i> TWP. <i>21 S</i> RGE. <i>36 E</i> NMPM 7. Unit Agreement Name 8. Farm or Lease Name <i>State F-1</i> 9. Well No. <i>10</i> 10. Field and Pool, or Subunit <i>UNDERSIGNED</i> <i>Blinbry / Drinkard</i> 12. County <i>LEA</i> 19. Proposed Depth <i>7000'</i> 19A. Formation <i>Blinbry / Drinkard</i> 20. Rotary or C.T. <i>Rotary</i> 21. Elevations (Show whether DF, RT, etc.) <i>3506.1 GL</i> 21A. Kind & Status Plug, Bond 21B. Drilling Contractor 22. Approx. Date Work will start <i>October 7, 1980</i>

PROPOSED CASING AND CEMENT PROGRAM

SIZE OF HOLE	SIZE OF CASING	WEIGHT PER FOOT	SETTING DEPTH	SACKS OF CEMENT	EST. TOP
17 1/2"	13 3/8"	54.5 #	1320'	1020	Circ
(*) * 12 1/4"	9 5/8"	40 #	5100'	1620	Circ
8 1/2"	7"	26 #	7000'	(318) **	5000'

It is proposed to drill a straight hole to a TD of 7000' & complete it as a Blinbry / Drinkard dual oil well.

See attachment for BOP specs.

* Intermediate csq. to be run only if severe lost circ. zone is encountered.

** If intermediate is not run, cont. on ...
will have ...
... of ...

APPROVAL VALID
FOR 90 DAYS UNLESS
DRILLING COMMENCED,

EXPIRES 12/8/80

IN ABOVE SPACE DESCRIBE PROPOSED PROGRAM; IF PROPOSAL IS TO DEEPEN OR PLUG BACK, GIVE DATA ON PRESENT PRODUCTIVE ZONE AND PROPOSED NEW PRODUCTIVE ZONE. GIVE BLOWOUT PREVENTER PROGRAM, IF ANY.

I hereby certify that the information above is true and complete to the best of my knowledge and belief.

Signed *W. A. Butterfield* Title *Administrative Supervisor* Date *9/3/80*

(This space for State Use)

Geologist

APPROVED BY *[Signature]* TITLE *[Signature]* DATE *[Signature]*

CONDITIONS OF APPROVAL, IF ANY:

** Note above -

NEW MEXICO OIL CONSERVATION COMMISSION
WELL LOCATION AND ACREAGE DEDICATION PLAT

Form C-102
Supersedes C-128
Effective 1-1-65

All distances must be from the outer boundaries of the Section.

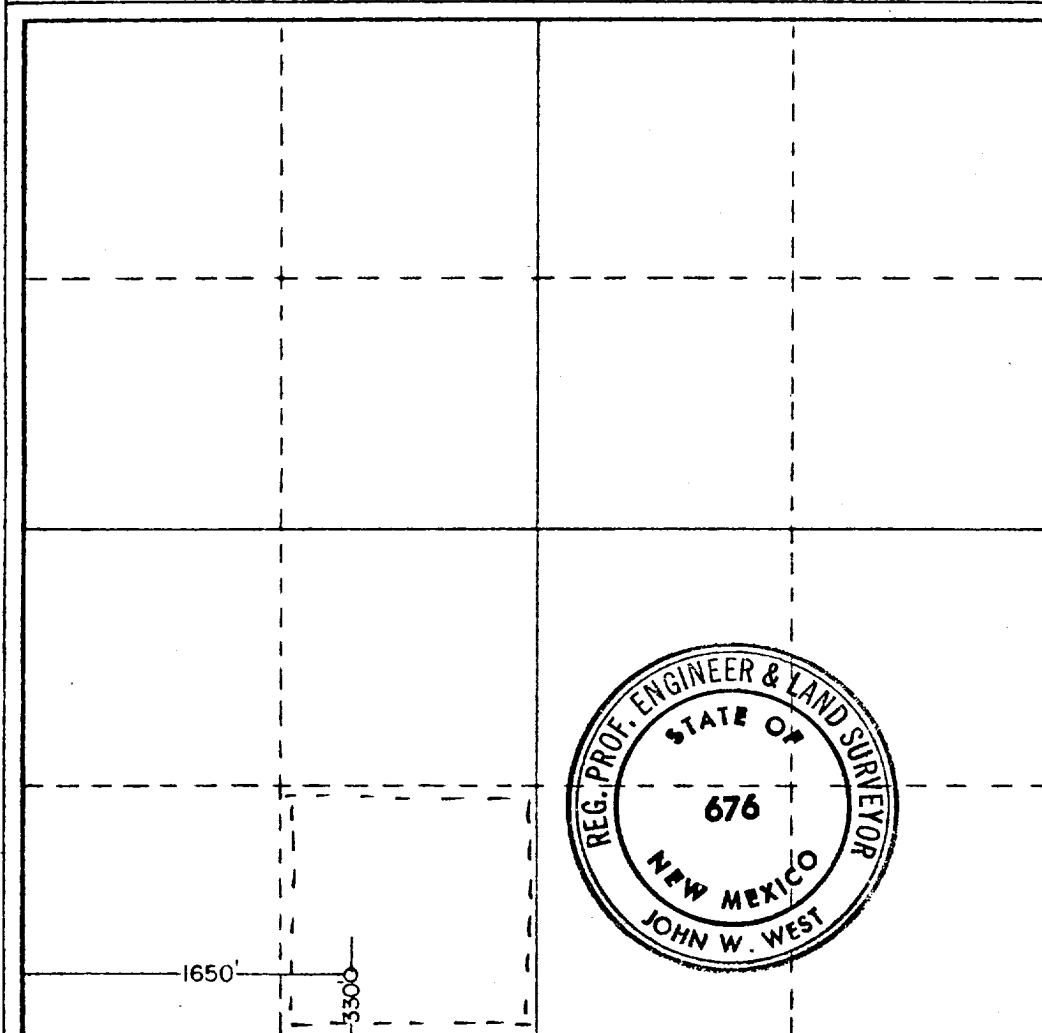
Operator Conoco, Inc.,			Lease State F-1		Well No. 10
Unit Letter N V	Section 1	Township 21 South	Range 36 East	County Lea	
Actual Footage Location of Well: 330 feet from the south line and 1650 feet from the west line					
Ground Level Elev. 3506.1	Producing Formation Blinberry / Drinkard		Pool Hardy Blinberry / Hardy Drinkard		Dedicated Acreage: 40 Acres

1. Outline the acreage dedicated to the subject well by colored pencil or hatchure marks on the plat below.
2. If more than one lease is dedicated to the well, outline each and identify the ownership thereof (both as to working interest and royalty).
3. If more than one lease of different ownership is dedicated to the well, have the interests of all owners been consolidated by communitization, unitization, force-pooling, etc?

☐ Yes ☐ No If answer is "yes," type of consolidation _____

If answer is "no," list the owners and tract descriptions which have actually been consolidated. (Use reverse side of this form if necessary.) _____

No allowable will be assigned to the well until all interests have been consolidated (by communitization, unitization, forced-pooling, or otherwise) or until a non-standard unit, eliminating such interests, has been approved by the Commission.



CERTIFICATION

I hereby certify that the information contained herein is true and complete to the best of my knowledge and belief.

Name
Wm. A. Duntley
Position
Administrative Supervisor
Company
Conoco Inc.
Date
9-3-80

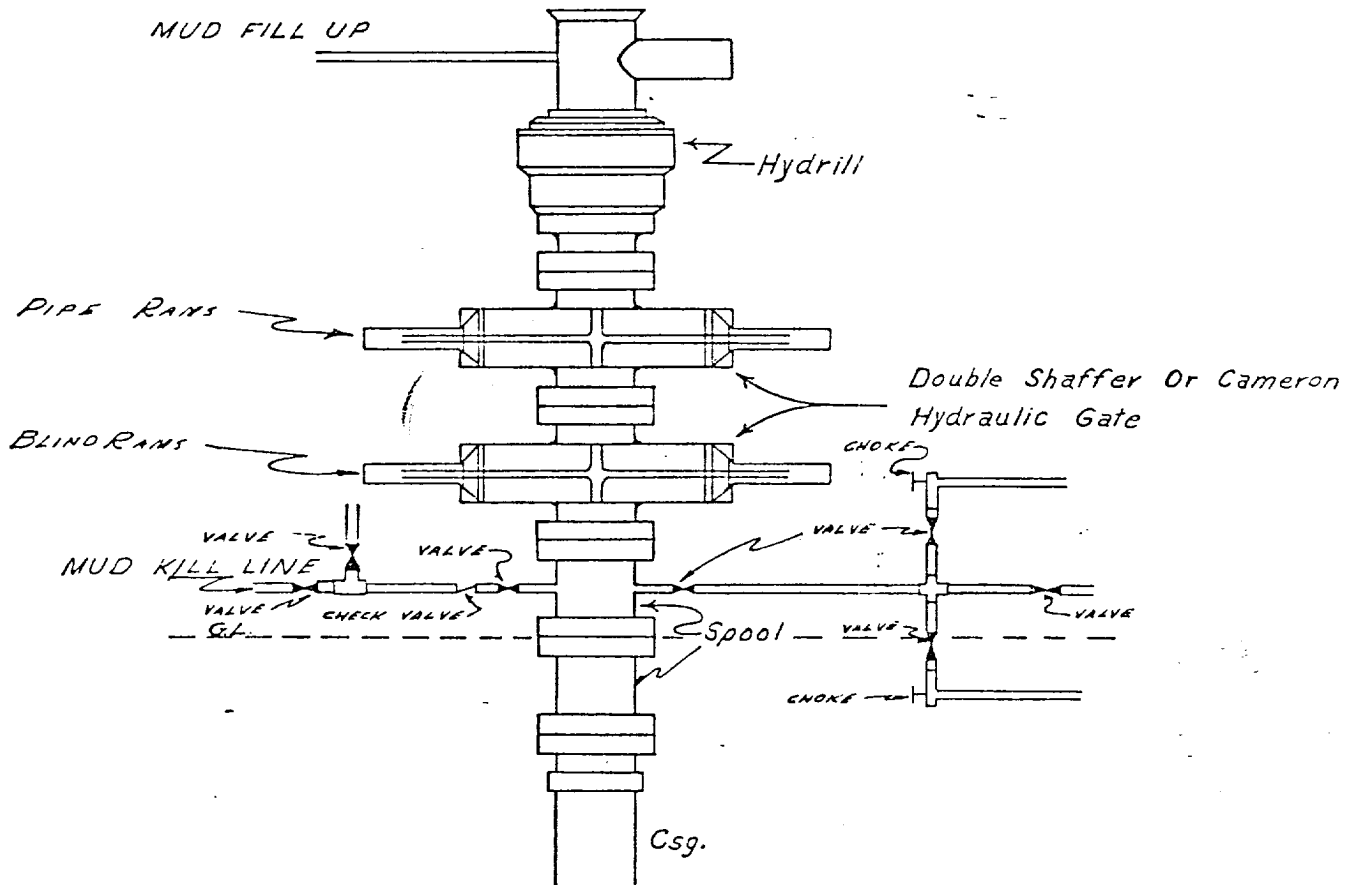
I hereby certify that the well location shown on this plat was plotted from field notes of actual surveys made by me or under my supervision, and that the same is true and correct to the best of my knowledge and belief.

Date Surveyed
August 30, 1980

Registered Professional Engineer and/or Land Surveyor

John W. West
Certificate No. **JOHN W. WEST 676**
PATRICK A. ROMERO 6663
Ronald J. Eidson 3254

CONTINENTAL OIL COMPANY
Blow-out Preventer Specifications



NOTE:

API SERIES 900

Manual and Hydraulic controls with closing unit no less than 75' from well head.
Remote controls on rig floor.

DUE TO SUBSTRUCTURE CLEARANCE,
HYDRILL MAY OR MAY NOT BE USED.

RECEIVED
SEP 5 1980
OIL CONSERVATION DIV.

SEP 5 1980