

NEW MEXICO OIL CONSERVATION COMMISSION
WELL LOCATION AND ACREAGE DEDICATION PLAT

Form C-102
Supersedes C-128
Effective 1-1-65

All distances must be from the outer boundaries of the Section

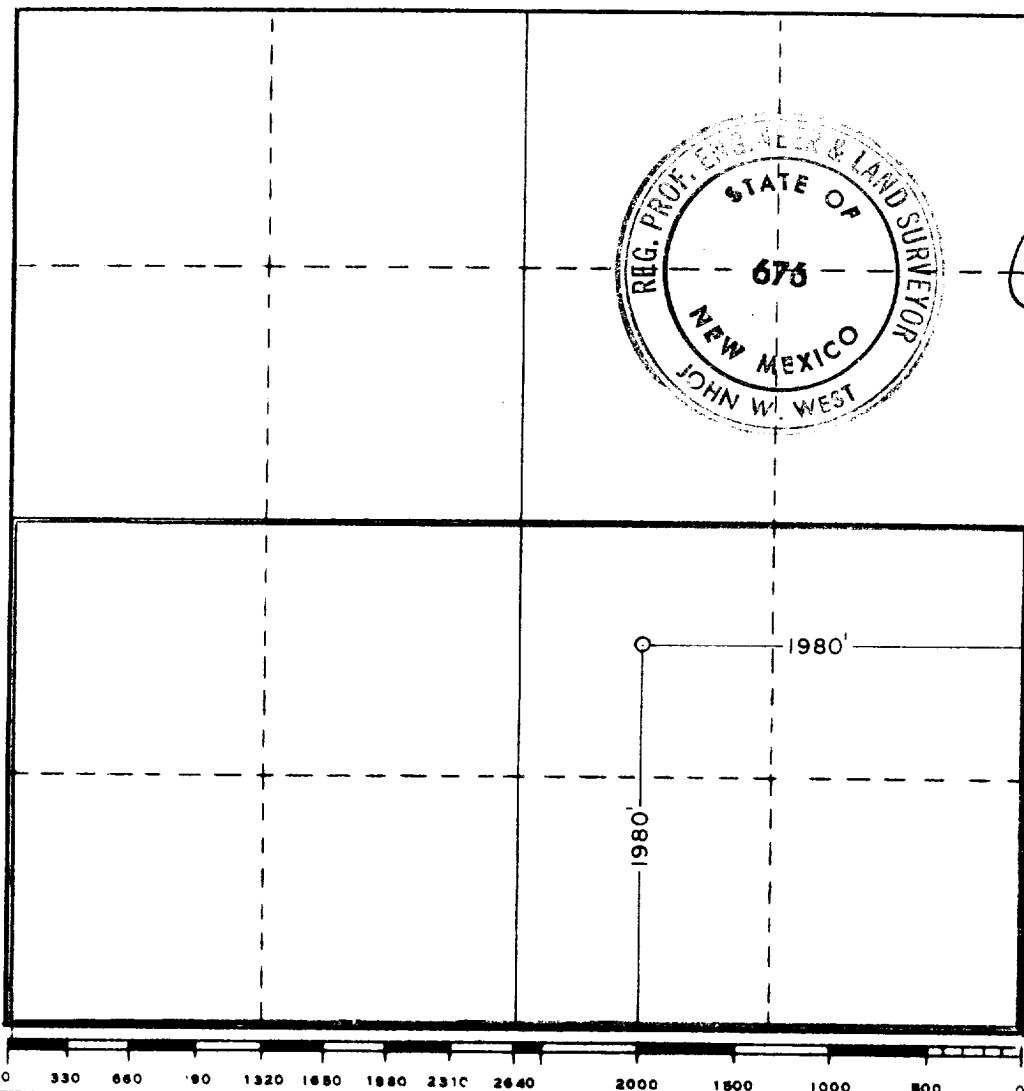
Operator Union Oil Company of California			Lease State FG			Well No. 1		
Unit Letter J	Section 13	Township 21South	Range 33East	County Lea				
Actual Footage Location of Well: 1980 feet from the South line and 1980 feet from the East line								
Ground Level Elev. 3770.6'	Producing Formation Morrow		Pool UNDESIGNATED			Dedicated Acreage: 320 Acres		

1. Outline the acreage dedicated to the subject well by colored pencil or hachure marks on the plat below.
2. If more than one lease is dedicated to the well, outline each and identify the ownership thereof (both as to working interest and royalty).
3. If more than one lease of different ownership is dedicated to the well, have the interests of all owners been consolidated by communitization, unitization, force-pooling, etc?

☒ Yes ☐ No If answer is "yes," type of consolidation Unitization

If answer is "no," list the owners and tract descriptions which have actually been consolidated. (Use reverse side of this form if necessary.)

No allowable will be assigned to the well until all interests have been consolidated (by communitization, unitization, forced-pooling, or otherwise) or until a non-standard unit, eliminating such interests, has been approved by the Commission.



CERTIFICATION

I hereby certify that the information contained herein is true and complete to the best of my knowledge and belief.

Name J.R. Hughes
Position District Drilling Supt.
Company Union Oil Co. of California
Date July 20, 1981

I hereby certify that the well location shown on this plat was plotted from field notes of actual surveys made by me or under my supervision, and that the same is true and correct to the best of my knowledge and belief.

Date Surveyed July 7, 1981
Registered Professional Engineer and/or Land Surveyor

John W. West
Certificate No. JOHN W. WEST 676
PATRICK A. ROMERO 6863
Ronald J. Eidson 3239

173

RECEIVED

JUL 23 1981

COOPERATION DIV.