

NO. OF COPIES RECEIVED	
DISTRIBUTION	
SANTA FE	
FILE	
U.S.G.S.	
LAND OFFICE	
OPERATOR	

NEW MEXICO OIL CONSERVATION COMMISSION

Form C-101
Revised 1-1-65

5A. Indicate Type of Lease	
STATE <input type="checkbox"/>	FEE <input checked="" type="checkbox"/>
5. State Oil & Gas Lease No.	

APPLICATION FOR PERMIT TO DRILL, DEEPEN, OR PLUG BACK

1a. Type of Work		7. Unit Agreement Name	
b. Type of Well OIL WELL <input checked="" type="checkbox"/> GAS WELL <input type="checkbox"/> OTHER <input type="checkbox"/>		8. Farm or Lease Name H. T. Mattern (NCT-C)	
2. Name of Operator Gulf Oil Corporation		9. Well No. 16	
3. Address of Operator P. O. Box 670, Hobbs, NM 88240		10. Field and Pool, or Wildcat Blinebry	
4. Location of Well UNIT LETTER <u>G</u> LOCATED <u>2080</u> FEET FROM THE <u>North</u> LINE AND <u>1980</u> FEET FROM THE <u>East</u> LINE OF SEC. <u>18</u> TWP. <u>21S</u> RGE. <u>37E</u> NMPM		12. County Lea	
21. Elevations (Show whether DF, RT, etc.) 3491' GL		19. Proposed Depth	19A. Formation
21A. Kind & Status Plug. Bond		22. Approx. Date Work will start	

PROPOSED CASING AND CEMENT PROGRAM

SIZE OF HOLE	SIZE OF CASING	WEIGHT PER FOOT	SETTING DEPTH	SACKS OF CEMENT	EST. TOP
No New Casing					

POH with production equipment. Set CIBP at 6590' to TA Drinkard. Test casing 4000#. Perf 5512-14', 5542-44', 5566-68', 5589-91', 5636-38', 5731-33', 5854-56' with (2) 1/2" JHPF. Spot 15% NEFE HCL 5856'-5440'. Acidize with 2800 gals 15% NEFE slick HCL, (36) RCNB's. Frac with 1750 gals 15% NEFE HCL, 56,000 gals gel, 20/40 sand and (24) RCNB's. Use rock salt and benzoic acid if necessary. Reverse out fill. GIH with production equipment.

IN ABOVE SPACE DESCRIBE PROPOSED PROGRAM; IF PROPOSAL IS TO DEEPEN OR PLUG BACK, GIVE DATA ON PRESENT PRODUCTIVE ZONE AND PROPOSED NEW PRODUCTIVE ZONE. GIVE BLOWOUT PREVENTER PROGRAM, IF ANY.

I hereby certify that the information above is true and complete to the best of my knowledge and belief.

Signed R.D. Pite Title Area Engineer Date 8-27-82

(This space for State Use)

ORIGINAL SIGNED BY

APPROVED BY JERRY SEXTON TITLE CHIEF OF SUPR. DATE AUG 31 1982

CONDITIONS OF APPROVAL, IF ANY.

RECEIVED
AUG 30 1982
D.C.D.
HOUSE OFFICE

EXICO OIL CONSERVATION COMMISSION
WELL LOCATION AND ACREAGE DEDICATION PLAT

Form O-1
Supersedes O-128
Effective 1-1-65

All distances must be from the outer boundaries of the Section.

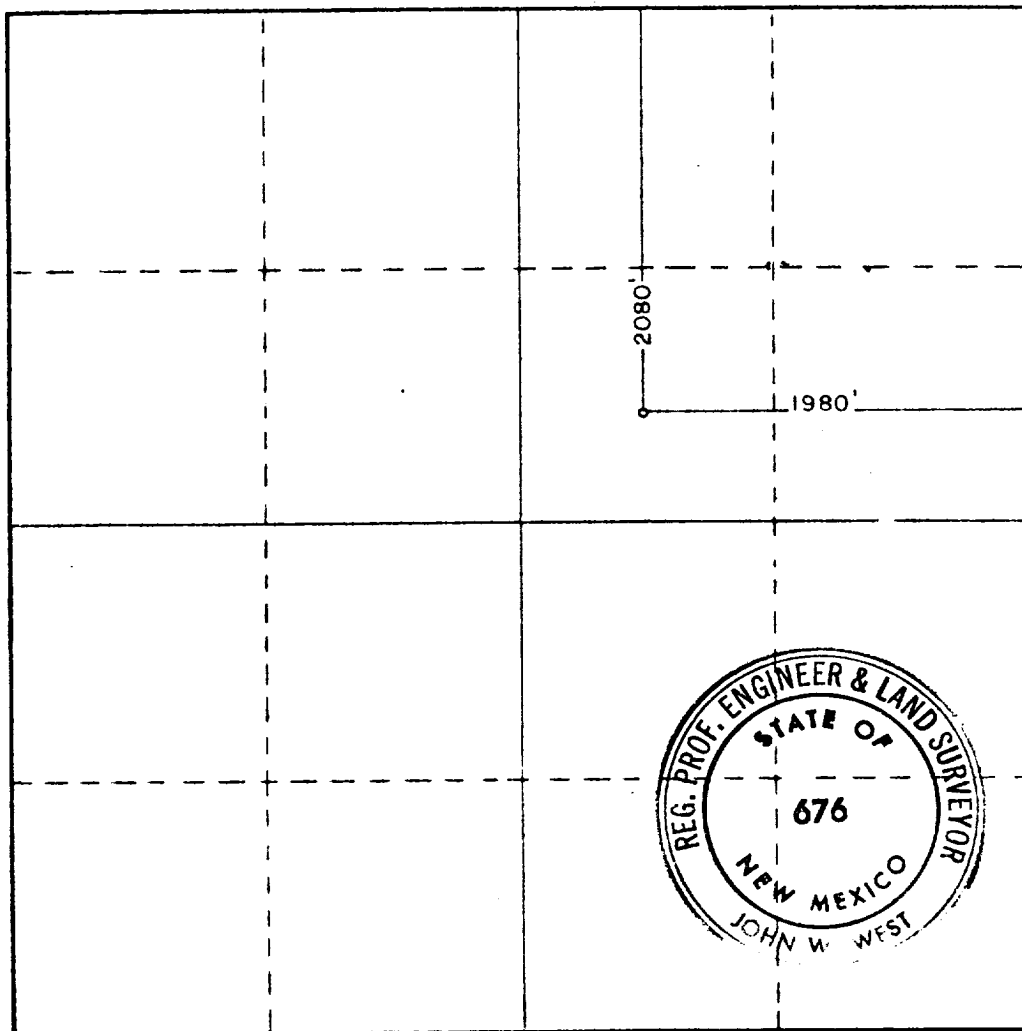
Operator GULF OIL CORP.			Lease H.T. MATTERN NCT-C		Area 16
Unit Letter G	Section 18	Township 21 SOUTH	Range 37 EAST	County LEA	
Actual Footage Location of Well: 2080 feet from the NORTH line and 1980 feet from the EAST line					
Ground Level Elev. 3491.0	Producing Formation Blinebry		Pool Blinebry	Dedicated Acreage: 40	

1. Outline the acreage dedicated to the subject well by colored pencil or hachure marks on the plat below.
2. If more than one lease is dedicated to the well, outline each and identify the ownership thereof (both as to working interest and royalty).
3. If more than one lease of different ownership is dedicated to the well, have the interests of all owners been consolidated by communitization, unitization, force-pooling, etc?

☐ Yes ☐ No If answer is "yes," type of consolidation _____

If answer is "no," list the owners and tract descriptions which have actually been consolidated. (Use reverse side of this form if necessary.) _____

No allowable will be assigned to the well until all interests have been consolidated (by communitization, unitization, forced-pooling, or otherwise) or until a non-standard unit, eliminating such interests, has been approved by the Commission.



CERTIFICATION

I hereby certify that the information contained herein is true and complete to the best of my knowledge and belief.

R.D. Pitre

Name

R. D. Pitre

Position

Area Engineer

Company

Gulf Oil Corporation

Date

8-27-82

I hereby certify that the well location shown on this plat was plotted from field notes of actual surveys made by me or under my supervision, and that the same is true and correct to the best of my knowledge and belief.

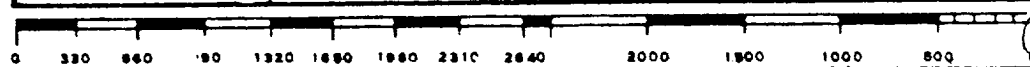
Date Surveyed

8-10-81

Registered Professional Engineer and/or Land Surveyor

John W. West

Certificate No. **JOHN W. WEST 676**
PATRICK A. ROMERO 6665
Ronald J. Eidson 3239



RECEIVED

AUG 30 1982

O.C.B.
HOEBS OFFICE