

N. M. OIL FIELD, COMMERCIAL
P. O. BOX 1980
HOBBS, NEW MEXICO 88240
SUBMIT TO THE STATE
(Other instructions on reverse side)

30-025-27599
Form approved.
Budget Bureau No. 42-R1425.

UNITED STATES
DEPARTMENT OF THE INTERIOR
GEOLOGICAL SURVEY

APPLICATION FOR PERMIT TO DRILL, DEEPEN, OR PLUG BACK

1a. TYPE OF WORK
 DRILL ☒ DEEPEN ☐ PLUG BACK ☐
 b. TYPE OF WELL
 OIL WELL ☒ GAS WELL ☐ OTHER ☐ SINGLE ZONE ☐ MULTIPLE ZONE ☒
 2. NAME OF OPERATOR
 CONOCO INC.
 3. ADDRESS OF OPERATOR
 P.O. Box 460, Hobbs, N.M. 88240
 4. LOCATION OF WELL (Report location clearly and in accordance with any State requirements.*)
 At surface 840' FNL & 1980' FEL
 At proposed prod. zone ☒
 5. LEASE DESIGNATION AND SERIAL NO.
 LC-031741(a)
 6. IF INDIAN, ALLOTTEE OR TRIBE NAME
 7. UNIT AGREEMENT NAME
 NMFLL
 8. FARM OR LEASE NAME
 Hawk A
 9. WELL NO.
 9
 10. FIELD AND POOL, OR WILDCAT
 Blinebry Oil & Gas / Drinkard
 11. SEC., T., R., M., OR BLK. AND SURVEY OR AREA
 Sec. 8, T-21S, R-37E
 12. COUNTY OR PARISH
 Lea
 13. STATE
 NM
 14. DISTANCE IN MILES AND DIRECTION FROM NEAREST TOWN OR POST OFFICE*
 15. DISTANCE FROM PROPOSED* LOCATION TO NEAREST PROPERTY OR LEASE LINE, FT. (Also to nearest drlg. unit line, if any)
 16. NO. OF ACRES IN LEASE
 17. NO. OF ACRES ASSIGNED TO THIS WELL
 40 acres
 18. DISTANCE FROM PROPOSED LOCATION* TO NEAREST WELL, DRILLING, COMPLETED, OR APPLIED FOR, ON THIS LEASE, FT.
 19. PROPOSED DEPTH
 6950'
 20. ROTARY OR CABLE TOOLS
 Rotary
 21. ELEVATIONS (Show whether DF, RT, GR, etc.)
 3514' GR (est)
 22. APPROX. DATE WORK WILL START*
 December 15, 1981

PROPOSED CASING AND CEMENTING PROGRAM

SIZE OF HOLE	SIZE OF CASING	WEIGHT PER FOOT	SETTING DEPTH	QUANTITY OF CEMENT
12 1/4"	8 5/8"	24 #	1370'	6665x circulate
7 7/8"	5 1/2"	15.5 #	6950'	12795x circulate

It is proposed to drill a straight hole to a TD of 6950' and complete it as a Blinebry / Drinkard dual oil well.

See attachments for 10 pt well plan and 13 pt Surface Use Plan.

RECEIVED
SEP 24 1981

OIL & GAS
U.S. GEOLOGICAL SURVEY
ROSWELL, NEW MEXICO

IN ABOVE SPACE DESCRIBE PROPOSED PROGRAM: If proposal is to deepen or plug back, give data on present productive zone and proposed new productive zone. If proposal is to drill or deepen directionally, give pertinent data on subsurface locations and measured and true vertical depths. Give blowout preventer program, if any.

24. SIGNED Wm A. Butterfield TITLE Administrative Supervisor DATE 9-21-81
 (This space for Federal or State office use)

PERMIT NO. APPROVED APPROVAL DATE _____
 APPROVED BY James A. Gilham TITLE _____ DATE _____
 CONDITIONS OF APPROVAL, IF ANY:
 OCT 9 1981
 FOR
 JAMES A. GILHAM
 DISTRICT SUPERVISOR
 *See Instructions On Reverse Side

NE. MEXICO OIL CONSERVATION COMMISSION
WELL LOCATION AND ACREAGE DEDICATION PLAT

Form C-102
Supersedes C-128
Effective 1-1-65

All distances must be from the outer boundaries of the Section.

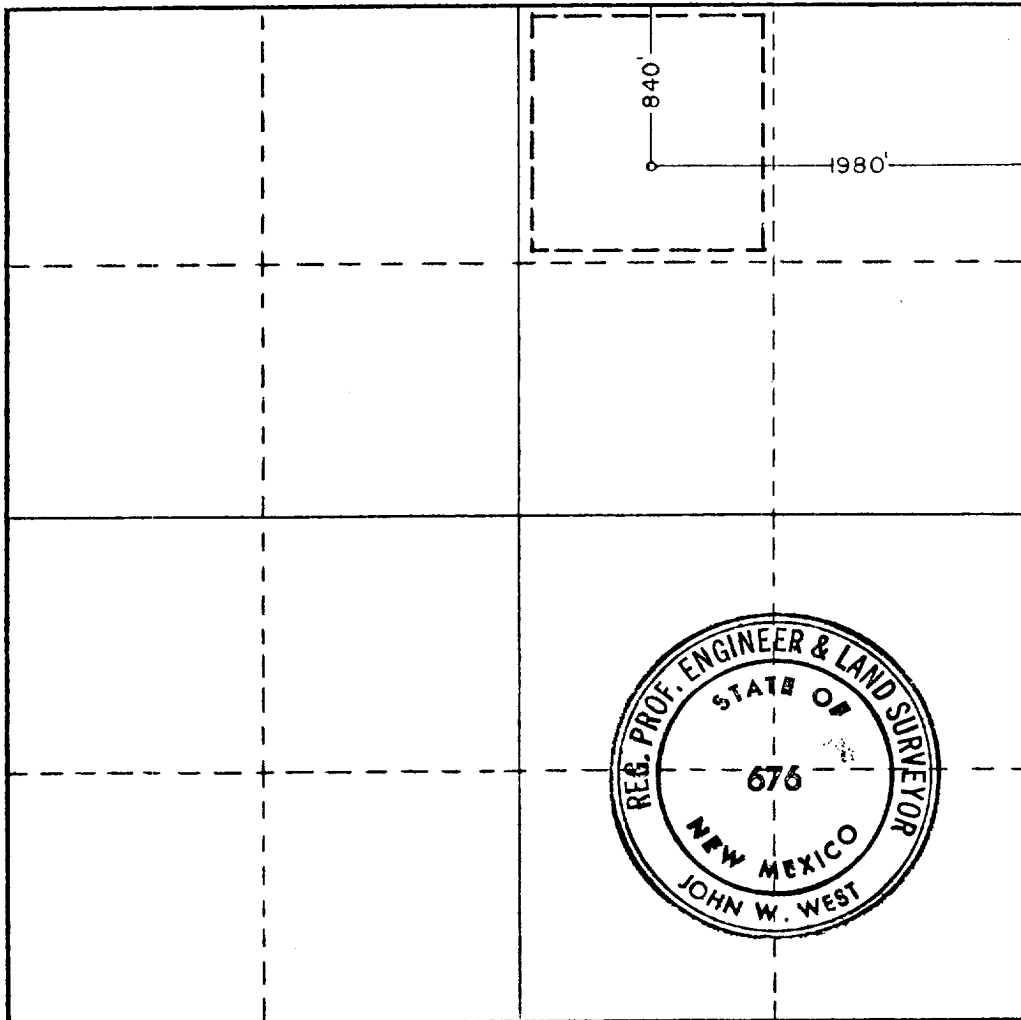
Operator CONOCO, INC.		Lease HAWK "A"		Well No. 9
Unit Letter B	Section 8	Township 21 SOUTH	Range 37 EAST	County LEA
Actual Footage Location of Well: 1980 feet from the EAST line and 840 feet from the NORTH line				
Ground Level Elev. 3513.9	Producing Formation Blinebry/Drinkard	Pool Blinebry Oil & Gas/Drinkard	Dedicated Acreage: 40 Acres	

1. Outline the acreage dedicated to the subject well by colored pencil or hachure marks on the plat below.
2. If more than one lease is dedicated to the well, outline each and identify the ownership thereof (both as to working interest and royalty).
3. If more than one lease of different ownership is dedicated to the well, have the interests of all owners been consolidated by communitization, unitization, force-pooling, etc?

☐ Yes ☐ No If answer is "yes," type of consolidation _____

If answer is "no," list the owners and tract descriptions which have actually been consolidated. (Use reverse side of this form if necessary.) _____

No allowable will be assigned to the well until all interests have been consolidated (by communitization, unitization, forced-pooling, or otherwise) or until a non-standard unit, eliminating such interests, has been approved by the Commission.



CERTIFICATION

I hereby certify that the information contained herein is true and complete to the best of my knowledge and belief.

Name
Wm A. Butterfield
Position
Administrative Supervisor
Company
Conoco Inc.

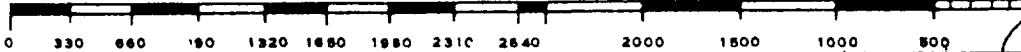
Date
September 21, 1981

I hereby certify that the well location shown on this plat was plotted from field notes of actual surveys made by me or under my supervision, and that the same is true and correct to the best of my knowledge and belief.

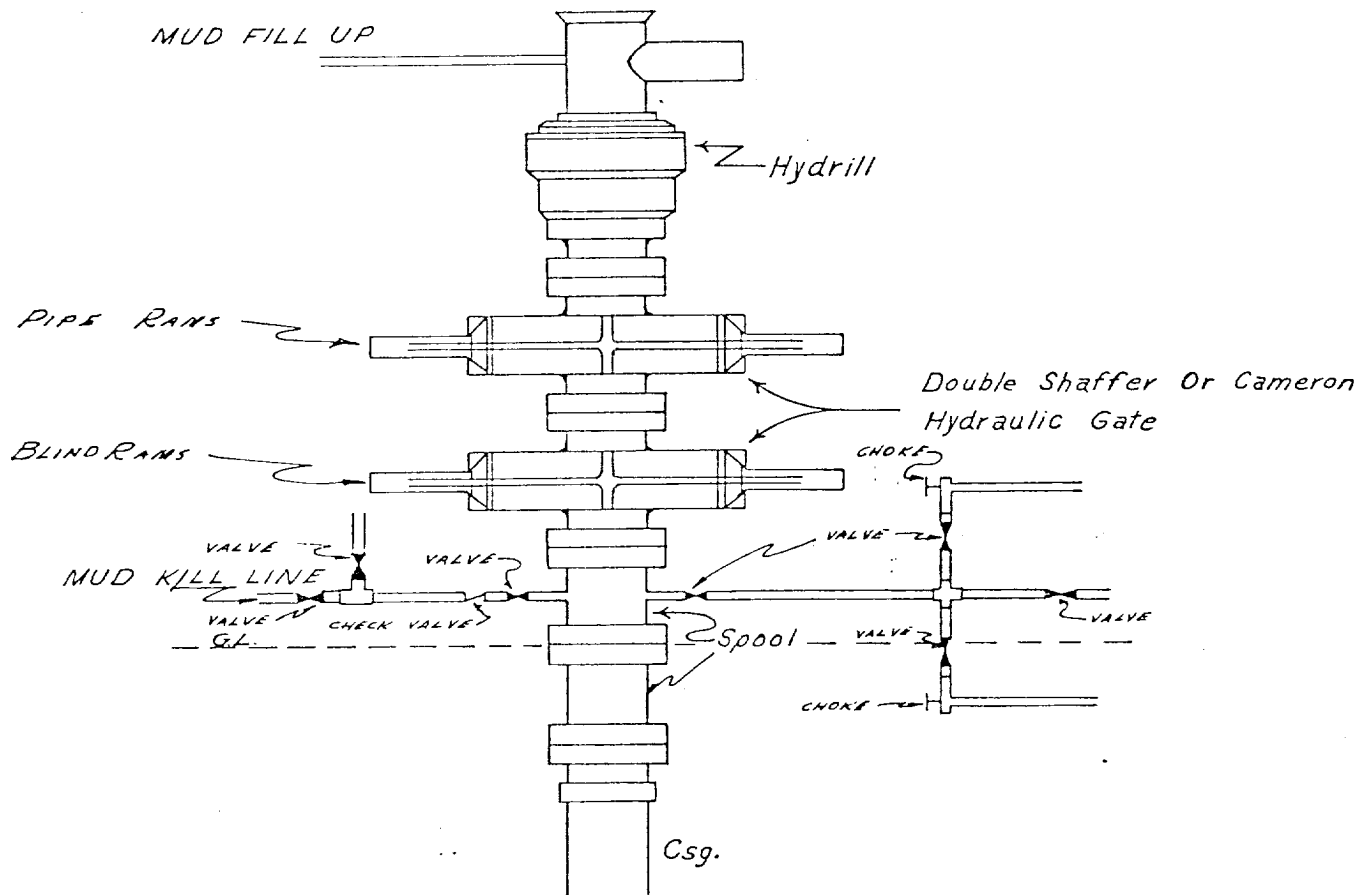
Date Surveyed
9-4-81

Registered Professional Engineer and/or Land Surveyor

John W. West
Certificate No. **JOHN W. WEST 676**
PATRICK A. ROMERO 6663
Ronald J. Eidson 3239



CONTINENTAL OIL COMPANY
Blow-out Preventer Specifications



NOTE:

API SERIES 900

Manual and Hydraulic controls with closing unit no less than 75' from well head.
Remote controls on rig floor.

DUE TO SUBSTRUCTURE CLEARANCE,
HYDRILL MAY OR MAY NOT BE USED.

113

OCT 16 1981

Amount \$1000
3/11/82