

N MEXICO OIL CONSERVATION COMMISS
WELL LOCATION AND ACREAGE DEDICATION . LAT

Form C-192
Supersedes C-128
Effective 1-1-65

All distances must be from the outer boundaries of the Section.

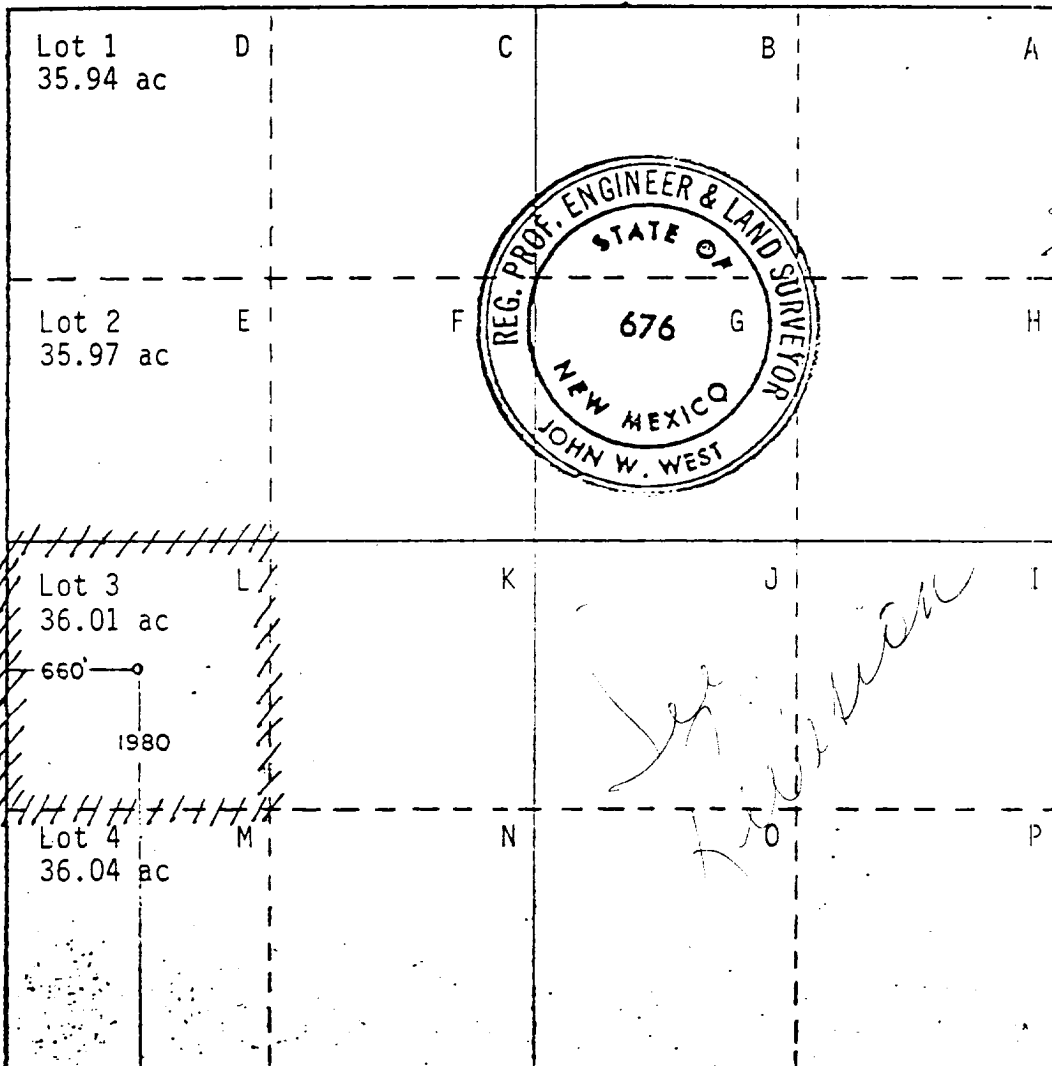
Operator PHILLIPS PETROLEUM COMPANY		Lease MERCHANTS "A" "COM"		Well No. 1
Unit Letter L	Section 30	Township 21 South	Range 35 East	County Lea
Actual Footage Location of Well: 1980 feet from the South line and 660 feet from the West line				
Ground Level Elev. 3614.0	Producing Formation Bone Springs	Pool Undesignated Bone Springs	Dedicated Acreage: 36.01	

1. Outline the acreage dedicated to the subject well by colored pencil or hatchure marks on the plat below.
2. If more than one lease is dedicated to the well, outline each and identify the ownership thereof (both as to working interest and royalty).
3. If more than one lease of different ownership is dedicated to the well, have the interests of all owners been consolidated by communitization, unitization, force-pooling, etc?

☒ Yes ☐ No If answer is "yes," type of consolidation Communitization - See Reverse Side

If answer is "no," list the owners and tract descriptions which have actually been consolidated. (Use reverse side of this form if necessary.) _____

No allowable will be assigned to the well until all interests have been consolidated (by communitization, unitization, forced-pooling, or otherwise) or until a non-standard unit, eliminating such interests, has been approved by the Commission.



CERTIFICATION	
I hereby certify that the information contained herein is true and complete to the best of my knowledge and belief.	
<i>[Signature]</i>	
W. J. Mueller	
Position	
Senior Engineering Specialist	
Company	
Phillips Petroleum Company	
Date	
March 28, 1983	
I hereby certify that the well location shown on this plat was plotted from field notes of actual surveys made by me or under my supervision, and that the same is true and correct to the best of my knowledge and belief.	
Date Surveyed	
12/12/81	
Registered Professional Engineer and/or Land Surveyor	
<i>[Signature]</i>	
Certificate No.	JOHN W. WEST 676
	PATRICK A. BOWEN 6885