

NO. OF COPIES RECEIVED		
DISTRIBUTION		
SANTA FE		
FILE		
U.S.G.S.		
LAND OFFICE		
OPERATOR		

Form C-101
Revised 1-1-65

5A. Indicate Type of Lease	
STATE <input checked="" type="checkbox"/>	FEE <input type="checkbox"/>
5. State Oil & Gas Lease No.	
E-3145	

[illegible]

SIZE OF HOLE	SIZE OF CASING	WEIGHT PER FOOT	SETTING DEPTH	SACKS OF CEMENT	EST. TOP
12 1/4	8 5/8"	24#	350'	250	Circ.
7 7/8	5 1/2"	15.5 & 14	3850'	125 First stage	3300
				350 Second stage	Circ.

- 1) Drill 12 1/4" hole to 350' with fresh water mud.
- 2) Cement 8 5/8" casing at 350' with sufficient cement to circulate. WOC 18 hours.
- 3) Drill 7 7/8" hole to TD with brine water mud.
- 4) Log well.
- 5) Cement 5 1/2" casing in two stages with DV tool at top of salt.
Bring first stage cement to base of salt. Use sufficient cement to circulate
second stage to surface.
- 6) Perforate, treat & test.

APPROVAL VALID FOR 180 DAYS
PERMIT EXPIRES 4/21/83
UNLESS DRILLING UNDERWAY

IN ABOVE SPACE DESCRIBE PROPOSED PROGRAM: IF PROPOSAL IS TO DEEPEN OR PLUG BACK, GIVE DATA ON PRESENT PRODUCTIVE ZONE AND PROPOSED NEW PRODUCTIVE ZONE. GIVE BLOWOUT PREVENTER PROGRAM, IF ANY.

I hereby certify that the information above is true and complete to the best of my knowledge and belief.

Signed Jerry Hillard Title Agent Date 20 Oct 82
(This space for State Use)

ORIGINAL SIGNED BY

APPROVED BY JERRY SEXTON TITLE _____ DATE 001-01-1962
CONDITIONS OF APPROVAL DISTRICT 1 - SUPP.

RECEIVED

OCT 20 1982

U.S.
HONORARY OFFICE

**NEW MEXICO OIL CONSERVATION COMMISSION
WELL LOCATION AND ACREAGE DEDICATION PLAT**

Form C-102
Supersedes C-128
Effective 1-1-65

All distances must be from the outer boundaries of the Section.

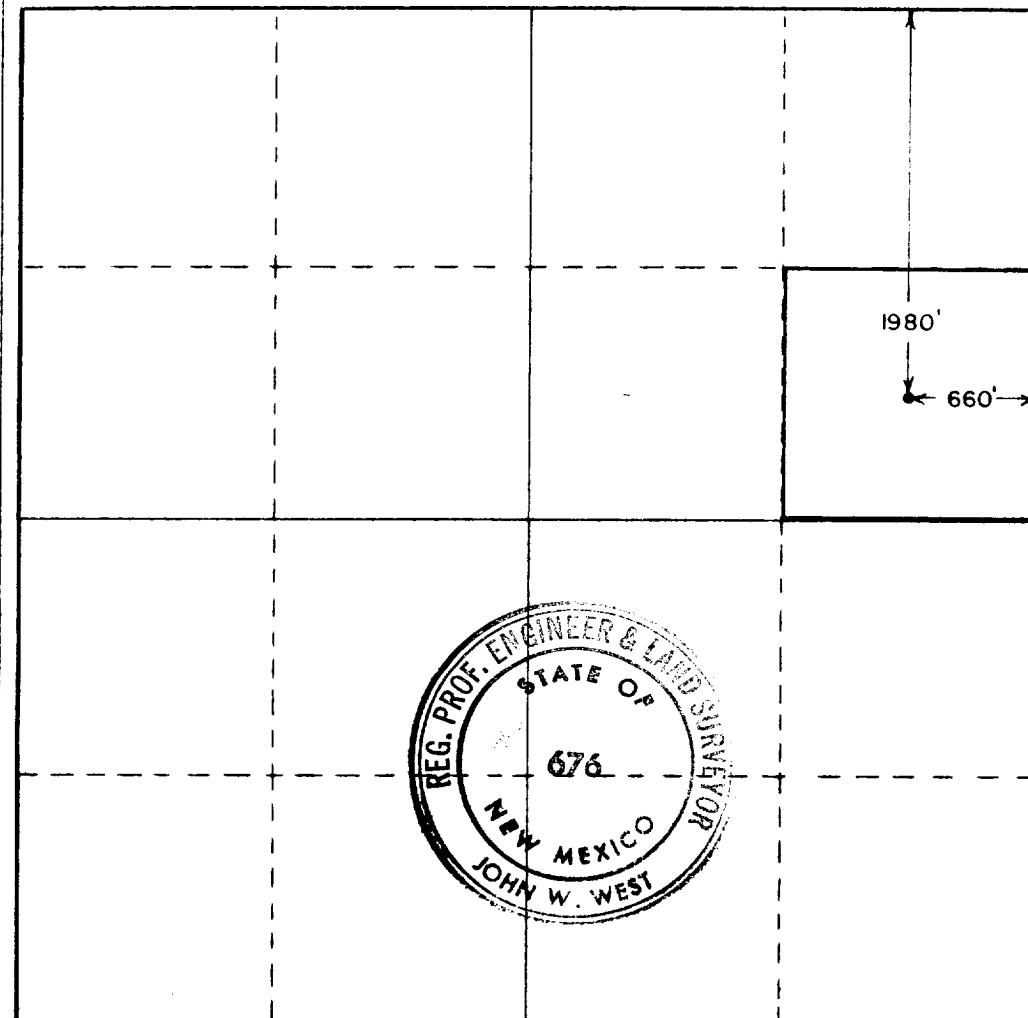
Operator Morris R. Antweil			Lease Coquina State		Well No. 1
Unit Letter H	Section 19	Township 21S	Range 35E	County Lea County	
Actual Footage Location of Well: 1980 feet from the North line and 660 feet from the East line					
Ground Level Elev. 3633.9	Producing Formation Yates	Pool <i>M. Sanderson</i> Undesignated Yates		Dedicated Acreage: 40 Acres	

1. Outline the acreage dedicated to the subject well by colored pencil or hatchure marks on the plat below.
2. If more than one lease is dedicated to the well, outline each and identify the ownership thereof (both as to working interest and royalty).
3. If more than one lease of different ownership is dedicated to the well, have the interests of all owners been consolidated by communitization, unitization, force-pooling, etc?

☐ Yes ☐ No If answer is "yes," type of consolidation _____

If answer is "no," list the owners and tract descriptions which have actually been consolidated. (Use reverse side of this form if necessary.) _____

No allowable will be assigned to the well until all interests have been consolidated (by communitization, unitization, forced-pooling, or otherwise) or until a non-standard unit, eliminating such interests, has been approved by the Commission.



CERTIFICATION

I hereby certify that the information contained herein is true and complete to the best of my knowledge and belief.

Jerry Hillard
Name

Jerry Hillard

Position

Agent

Company

Morris R. Antweil

Date

20 Oct 82

I hereby certify that the well location shown on this plat was plotted from field notes of actual surveys made by me or under my supervision, and that the same is true and correct to the best of my knowledge and belief.

Date Surveyed

September 24, 1982

Registered Professional Engineer and/or Land Surveyor

John W. West

Certificate No. **JOHN W. WEST 676**
PATRICK A. ROMERO 6463
Ronald J. Eidson 3239

0 330 660 990 1320 1650 1980 2310 2640 2970 3300 3630 3960 4290 4620 4950 5280 5610 5940 6270 6600

RECEIVED

OCT 29 1982

U.S.
FEDERAL OFFICE

FILE