

DISTRICT I

1625 N. French Dr., Hobbs, NM 88240

DISTRICT II

811 South First, Artesia, NM 88210

DISTRICT III

1000 Rio Brazos Rd., Aztec, NM 87410

DISTRICT IV

2040 South Pacheco, Santa Fe, NM 87505

State of New Mexico
E. gy, Minerals and Natural ResourcesForm C-105
Revised March 25, 1999OIL CONSERVATION DIVISION
2040 South Pacheco
Santa Fe, NM 87505
Amended to Correct Pool

WELL API NO.

30-025-28671

5. Indicate Type of Lease

☐ STATE☒ FEE

6. State Oil & Gas Lease No.

WELL COMPLETION OR RECOMPLETION REPORT AND LOG

1a. Type of Well:

☒ OIL WELL☐ GAS WELL☐ DRY☐ OTHER

b. Type of Completion:

☐ New Well☐ Workover☐ Deepen☒ Plug Back☐ Diff. Resvr.☐ Other

2. Name of Operator

Apache Corporation

3. Address of Operator

2000 Post Oak Blvd., Ste. 100, Houston, Texas 77056-4400

4. Well Location

Unit Letter M : 3500 Feet From The South Line and 367 Feet From The West Line
Section 3 Township 21S Range 37E NMPM Lea County

10. Date Spudded

11. Date T.D. Reached

12. Date Compl. (Ready to Prod.)

7/1/00

13. Elevations (DF & RKB, RT, GR, etc.)

3429'

GR

14. Elev. Casinghead

15. Total Depth

7745

16. Plug Back T.D.

6886

17. If Multiple Compl. How

Many Zones?

18. Intervals

Drilled By

Rotary Tools

Cable Tools

19. Producing Interval(s), of this completion - Top, Bottom, Name

Grayburg 3845 - 3946

20. Was Directional Survey Made

21. Type Electric and Other Logs Run

22. Was Well Cored

23.

CASING RECORD (Report all strings set in well)

CASING SIZE	WEIGHT LB./FT.	DEPTH SET	HOLE SIZE	CEMENTING RECORD	AMOUNT PULLED
13-3/8	48#	481	17-1/4	475 sx / Circulated to Surface	
8-5/8	24# & 32#	2470	12-1/4	1425 sx / Circulated to Surface	
5-1/2	15.5# & 17#	7745	7-7/8	1530 sx / TOC @ 364' (Calc)	

24.

LINER RECORD

SIZE	TOP	BOTTOM	SACKS CEMENT	SCREEN

25.

TUBING RECORD

SIZE	DEPTH SET	PACKER SET
2-7/8	3966	

26. Perforation record (interval, size, and number)

Grayburg 3845-51, 60-70, 83-96, 3913-18, 29-46

4" - 169 Holes

CIBP @ 6919' w/ 35' cement on top

Abo 7080, 81, 82, 85, 86, 87, 88, 97, 98, 99, 7100, 01, 03, 04, 05, 06, 09,

10, 11, 12, 26, 27, 28, 29, 30, 7140-67, 83, 86, 87, 94, 95, 96, 99, 7200,

01, 06, 07, 08 - 4" - 94 Holes

27. ACID, SHOT, FRACTURE, CEMENT, SQUEEZE, ETC.

DEPTH INTERVAL	AMOUNT AND KIND MATERIAL USED
3845 - 3946	Acidize w/ 2500 gals 15% HCL
	Frac w/ 18900 gals gel & 40100# 16/30 sand

28.

PRODUCTION

Date First Production 7/1/00		Production Method (Flowing, gas lift, pumping - Size and type pump) Pumping - 1.5" Rod Insert				Well Status (Prod. or Shut-in) Producing	
Date of Test 8/13/00	Hours Tested 24	Choke Size	Prod'n For Test Period	Oil - Bbl. 132	Gas - MCF 420	Water - Bbl. 13	Gas - Oil Ratio 3181
Flow Tubing Press.	Casing Pressure	Calculated 24-Hour Rate	Oil - Bbl.	Gas - MCF	Water - Bbl.	Oil Gravity - API - (Corr.)	

29. Disposition of Gas (Sold, used for fuel, vented, etc.)

Sold

Test Witnessed By

Apache Corporation

30. List Attachments

C-104

31. I hereby certify that the information shown on both sides of this form is true and complete to the best of my knowledge and belief

Signature

Printed
Name

Debra J. Anderson

Title

Sr. Engineering Tech

Date

11/27/00

District I
1625 N. French Drive, Hobbs, NM 88240

State of New Mexico
Energy, Minerals and Natural Resources Department

Form C-102
Revised October 18, 1994

District II
P O Drawer DD, Artesia, NM 88210

OIL CONSERVATION DIVISION

Instruction on Back
Submit to Appropriate District Office
State Lease - 4 Copies
Fee Lease - 3 Copies

District III
1000 Rio Brazos Rd., Aztec, NM 87410

2040 S. Pacheco
Santa Fe, New Mexico 87505

☐ AMENDED REPORT

District IV
2040 South Pacheco, Santa Fe, NM 87505

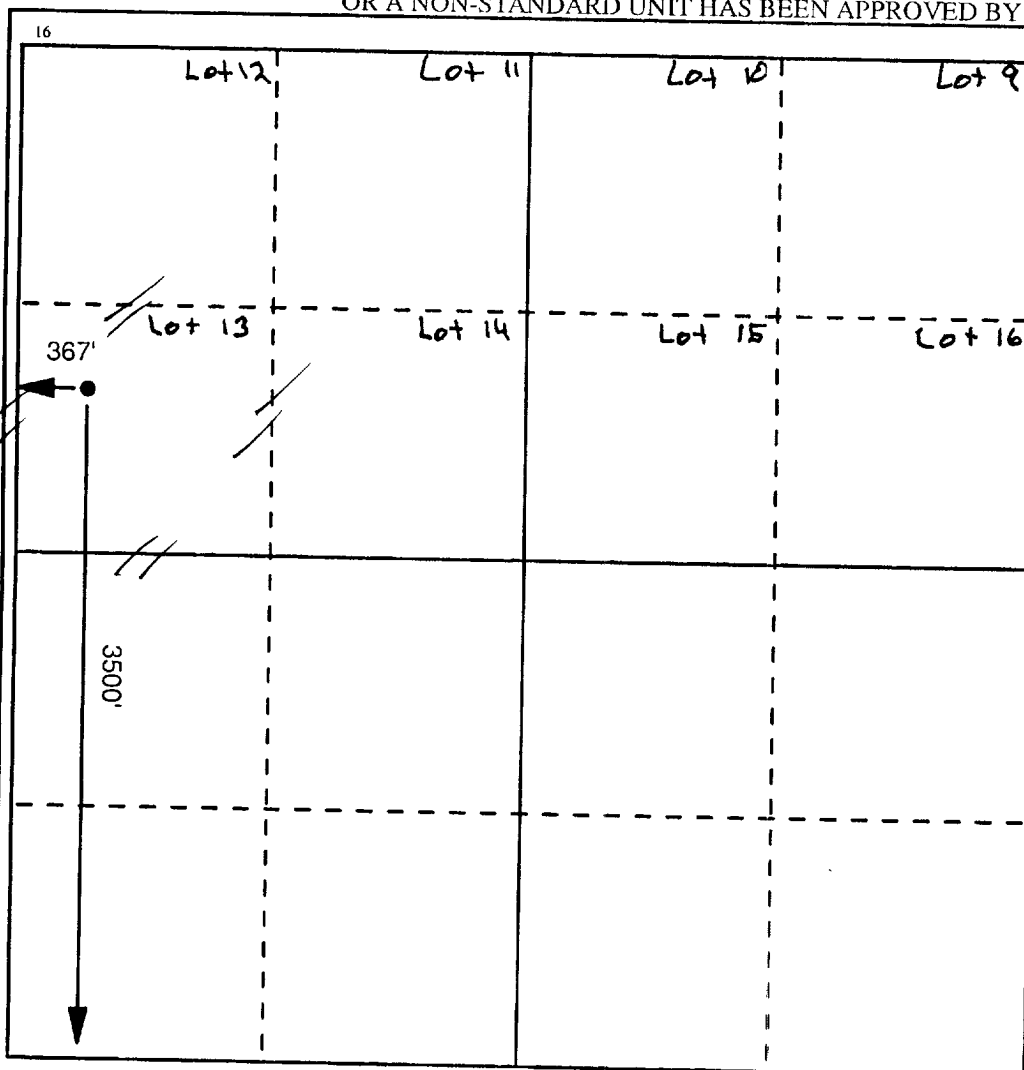
WELL LOCATION AND ACREAGE DEDICATION PLAT

¹ API Number 30-025-28671	² Pool Code 50350	³ Pool Name Penrose Skelly; Grayburg
⁴ Property Code 23108	⁵ Property Name Livingston	⁶ Well Number 14
⁷ OGRID No. 000873	⁸ Operator Name Apache Corporation	⁹ Elevation 3429

¹⁰ Surface Location									
UL or Lot No. M	Section 3	Township 21S	Range 37E	Lot Idn 13	Feet from the 3500	North/South line South	Feet from the 367	East/West line West	County Lea

¹¹ Bottom Hole Location If Different From Surface									
UL or Lot No.	Section	Township	Range	Lot Idn	Feet from the	North/South line	Feet from the	East/West line	County
¹² Dedicated Acres 40									
¹³ Joint or Infill									
¹⁴ Consolidation Code									
¹⁴ Order No.									

NO ALLOWABLE WILL BE ASSIGNED TO THIS COMPLETION UNTIL ALL INTERESTS HAVE BEEN CONSOLIDATED
OR A NON-STANDARD UNIT HAS BEEN APPROVED BY THE DIVISION



¹⁷ OPERATOR CERTIFICATION

I hereby certify that the information contained herein is true and complete to the best of my knowledge and belief.

Signature
Debra J. Anderson
Printed Name
Debra J. Anderson
Title
Sr. Engineering Technician
Date
11/27/00

¹⁸ SURVEYOR CERTIFICATION

I hereby certify that the well location shown on this plat was plotted from field notes of actual surveys made by me or under my supervision, and that the same is true and correct to the best of my belief.

Date Surveyed
Signature and Seal of Professional Surveyor

Certificate Number