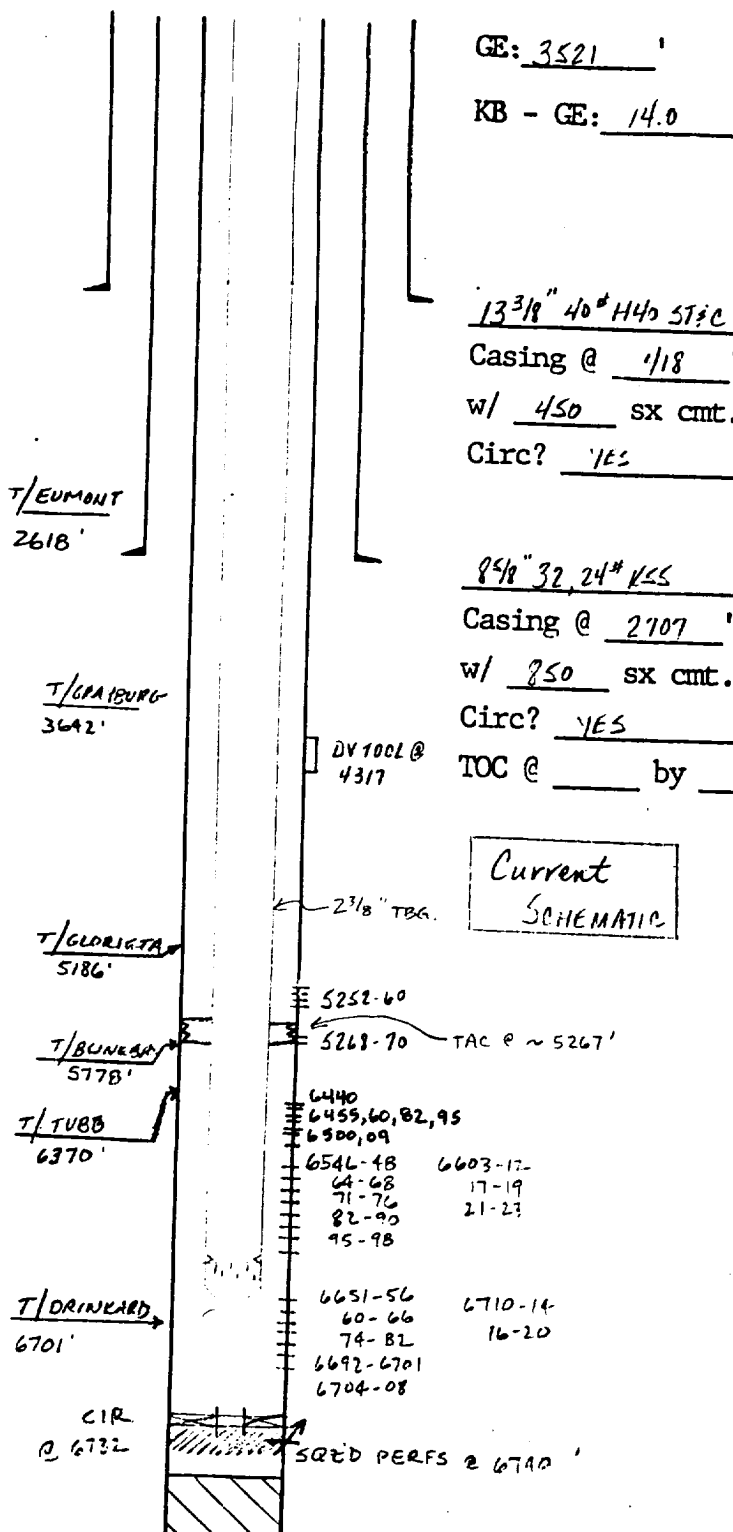


WELL DATA SHEET

LEASE: J.F. JANDA (NCT-D) WELL NO.: 4 FIELD: HARDY TUBB-DRINKARD
 LOCATION: 2970 FEET FROM S LINE, 660 FEET FROM W LINE. CHEVRON W.I.: 100 %
 SECTION: 2 TOWNSHIP: 215 RANGE: 36E UNIT: M, COUNTY: LFA STATE: NM



GE: 3521
 KB - GE: 14.0

13 3/8 40# H40 STIC
 Casing @ 3521
 w/ 450 sx cmt.
 Circ? YES

8 5/8 32, 24# K55
 Casing @ 2707
 w/ 850 sx cmt.
 Circ? YES
 TOC @ _____ by _____

Current SCHEMATIC

5 1/2 15.5# K55 LTIC
 Casing @ 6793
 w/ 1700 sx cmt.
 Circ? YES
 TOC @ _____ by _____

Initial Completion Data: Date: 8/1/84
LOST FLUID TO HOLE FROM 4692-6794

PERF 5252-60, 5268-70 w/ 2 SRF (GLORIASTA)
SPOT 250 GAL 15% NEFE HR ACROSS PERFS.
DISPLACE ACID INTO PERFS. 1-2 BPM @ 2000-2400 PSI
ACE PERFS w/ 4000 GAL 15% NEFE w/ 21 BALL SEALERS.
SWABBED AND FLOWED FOR APPROX 1 WEEK. 36 BO + 218 ON PWB

Initial Prod/Inj: P 42 BO + 143 BW + 146 MCF

Subsequent Operations:
SEP 1988 - T&B PARTED. FISHED ALL BUT 25' MUD ANCHOR. w/ BPOB AND STANDING VALVE.

MAR 1990 - Cleaned out to P&TD. Perf'd source zones @ 6735 + 6440', but cld pump into. Perf. w/ 4" csq. guns, 1 SRF: 6440-6720' (TUBB-DRKD). Acids: w/ 7225 gals. 20% NeFeHCl w/ 300 1:1 SG BALL SEALERS. ISIP = 2280 psi. 15 min = 1640 psi. Swabbed. Frac new perfs w/ 85,122 Gals. 40# gelled wtr. w/ 257,177 lbs. 12/20 Ottawa sd. 25 BPM @ 5500 psi. ISIP = 3916. 15 min SIP = 3745 psi. Flowed well back. cld sand to 6730'. Tube well up to pump.

4-90 - Tag for fill. Land tag @ 6634'. Well prod. 2 BO PD, 85 BW PD, 175 MCF PD. FLE S.N.

Remarks or Additional Data:
 TOB DETAIL: 171 JS 2 3/8" JS TBG
 BAYER TAC
 41 JS TBG
 SN
 PERF SUB
 MA w/ BPOB
 ROD DETAIL: 1 1/4" x 16' PR
 2 - 7/8" x 2' RODS
 2 - 7/8" x 4' RODS
 78 - 7/8" x 25' D RODS
 173 - 3/4" x 25' D RODS
 1 - 3/4" x 2' PWD
 2" x 1 1/2" x 16' PUMP
 1" x 6" ANCHOR

Present Prod/Inj: 6-75-135 (OWG)
 Last Update: 7-90 DLH

PBD: 6748
 TD: 6794