

20-025-24030

NO. OF COPIES RECEIVED	
DISTRIBUTION	
SANTA FE	
FILE	
U.S.G.S.	
LAND OFFICE	
OPERATOR	

NEW MEXICO OIL CONSERVATION COMMISSION

Form C-101
Revised 1-1-85

5A. Indicate Type of Lease
STATE <input checked="" type="checkbox"/> FEE <input type="checkbox"/>

5. State Oil & Gas Lease No.

A-1350-12

APPLICATION FOR PERMIT TO DRILL, DEEPEN, OR PLUG BACK

1a. Type of Work		7. Unit Agreement Name	
b. Type of Well OIL WELL <input checked="" type="checkbox"/> GAS WELL <input type="checkbox"/> OTHER <input type="checkbox"/>		8. Farm or Lease Name	
2. Name of Operator Gulf Oil Corp.		EVANS STATE	
3. Address of Operator P. O. Box 670, Hobbs, NM 88240		9. Well No. 7	
4. Location of Well UNIT LETTER <u>P</u> LOCATED <u>2970</u> FEET FROM THE <u>SOUTH</u> LINE AND <u>660</u> FEET FROM THE <u>EAST</u> LINE OF SEC. <u>3</u> TWP. <u>21 S</u> RGE. <u>36 E</u> NMPM		10. Field and Pool, or Wildcat HARDY TUBB	
11. Proposed Depth 6900		12. County LEA	
19A. Formation TUBB		20. Rotary or C.T. ROTARY	
21. Elevations (Show whether D.P., R.T., etc.) 3525.2 GLE		22. Approx. Date Work will start Nov 20, 1984	
21A. Kind & Status Plug. Bond BLANKET		21B. Drilling Contractor UNKNOWN	

PROPOSED CASING AND CEMENT PROGRAM

SIZE OF HOLE	SIZE OF CASING	WEIGHT PER FOOT	SETTING DEPTH	SACKS OF CEMENT	EST. TOP
17 1/2"	13 3/8"	48 #	450'		SURFACE
11"	8 5/8"	24/32	2700		SURFACE
7 7/8"	5 1/2"	15.5	6900	TO BE DETER. FROM CALIPER LOG	2500'

MWD PROGRAM & 0-450' FW SPUO MWD 8.6-8.8 PPG 32-36 VIS
450-1250 "

1250-2700 BRINE WATER 10.0-10.2 PPG 28-30 VIS

2700-6500 FW 8.4-8.5 PPG 28-30 VIS

6500-6900 FW POLY 8.5-8.6 PPG 30 VIS 20 W/L

SEE ATTACHED BOP DRAWING FOR 2000-3000 W.P.

IN ABOVE SPACE DESCRIBE PROPOSED PROGRAM; IF PROPOSAL IS TO DEEPEN OR PLUG BACK, GIVE DATA ON PRESENT PRODUCTIVE ZONE AND PROPOSED NEW PRODUCTIVE ZONE. GIVE BLOWOUT PREVENTER PROGRAM, IF ANY.

I hereby certify that the information above is true and complete to the best of my knowledge and belief.

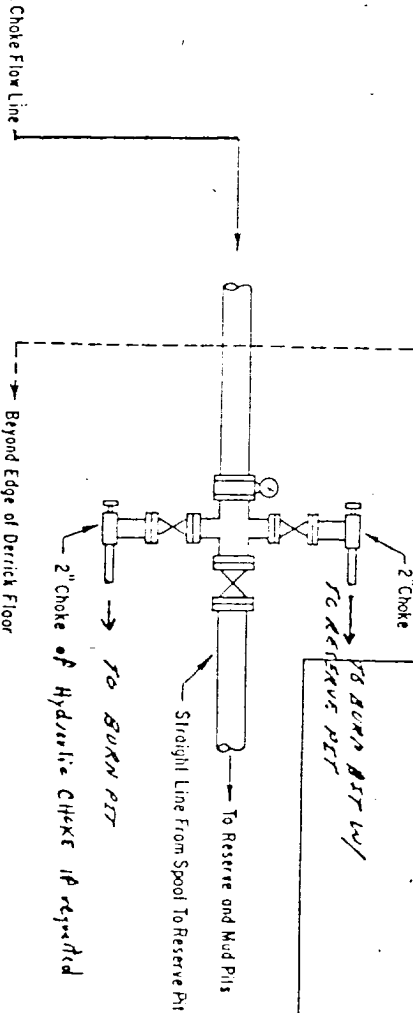
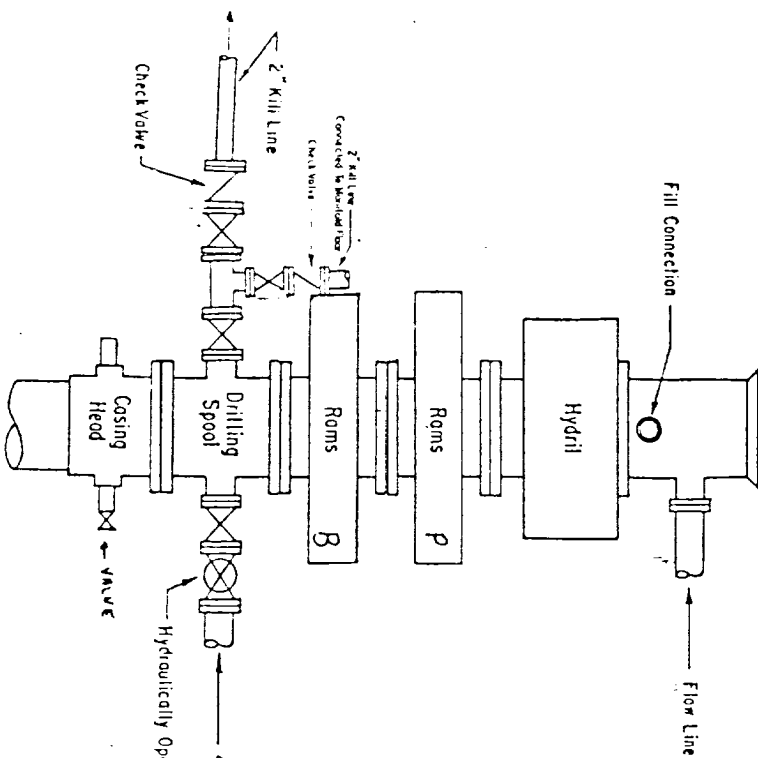
Signed R.C. Caden Title AREA PROD MGR Date 11-7-84

(This space for State Use)
ORIGINAL SIGNED BY JERRY SEXTON

APPROVED BY DEPT. SUPERVISOR TITLE DATE NOV 14 1984

CONDITIONS OF APPROVAL, IF ANY:

APPROVAL VALID FOR 180 DAYS
PERMIT EXPIRES 5/14/85



ADDITIONS - DELETIONS - CHANGES SPECIFY

NOTE: "When Required" means at any time the Gulf Service man, may, as well require the equipment to be installed during operations.

2000-3000 PSI WORKING PRESSURE BOP Hook-Up for Large Casing

SPECIFY WORKING PRESSURE

labeled, with control handles to indicate open and closed positions. A pressure reducer and regulator must be provided for operating the Hydril preventer. When required, a second pressure reducer shall be available to limit operating fluid pressures to ram preventers. Gulf Legion No. 38 hydraulic oil, an equivalent or better, is to be used as the fluid to operate the hydraulic equipment.

The choke manifold, the choke flow line, the choke lines and the relief lines are to be supported by metal stands and adequately anchored. The choke flow line, relief lines and choke lines shall be constructed as straight as possible and without sharp bends. Easy and safe access shall be maintained to the choke manifold. All valves are to be selected for operation in the presence of oil, gas, and drilling fluids. The choke flow line valves and valves of the relief lines connected to the drilling spools and all ram type preventers must be equipped with stem extensions, universal joints, if needed, and hand wheels which are to extend beyond the edge of the derrick substructure. All other valves shall be equipped with handles.

When Required

The blowout preventer assembly shall consist of one blind ram preventer and one pipe ram preventer, both hydraulically operated, a Hydril preventer, valves, chokes and connections, as illustrated. If a tapered drill string is used, a ram preventer shall be provided for each size of drill pipe. Casing and tubing rams to fit the preventers are to be available as needed. The ram preventers may be two singles or a double type. If correct in size, the flanged outlet of the ram preventer may be used for connecting to the 4-inch I.D. choke flow line and to the kill line. The substructure height shall be sufficient to install a rotating blowout preventer.

Minimum operating equipment for the preventers and hydraulically operated valves shall be as follows: (1) multiple pumps, driven by a continuous source of power, capable of fluid changing the total accumulator volume from the nitrogen precharge pressure to its rated pressure within 2 minutes. Also, the pumps are to be connected to the hydraulic operating system which is to be a closed system. (2) the charging pumps shut down, the pressurized fluid volume stored in the accumulator shall be sufficient to close all the pressure-operated devices simultaneously within 19 seconds after closure, the remaining accumulator pressure shall be not less than 1000 PSI with the remaining accumulator fluid volume of at least 50 percent of the original. When required, either an additional source of power, remote and equal, is to be available to operate the above pumps, or there shall be additional pumps operated by separate power and equal in performance capabilities.

**NEW MEXICO OIL CONSERVATION COMMISSION
WELL LOCATION AND ACREAGE DEDICATION PLAT**

Form O-102
Supersedes C-128
Effective 1-1-65

All distances must be from the outer boundaries of the Section

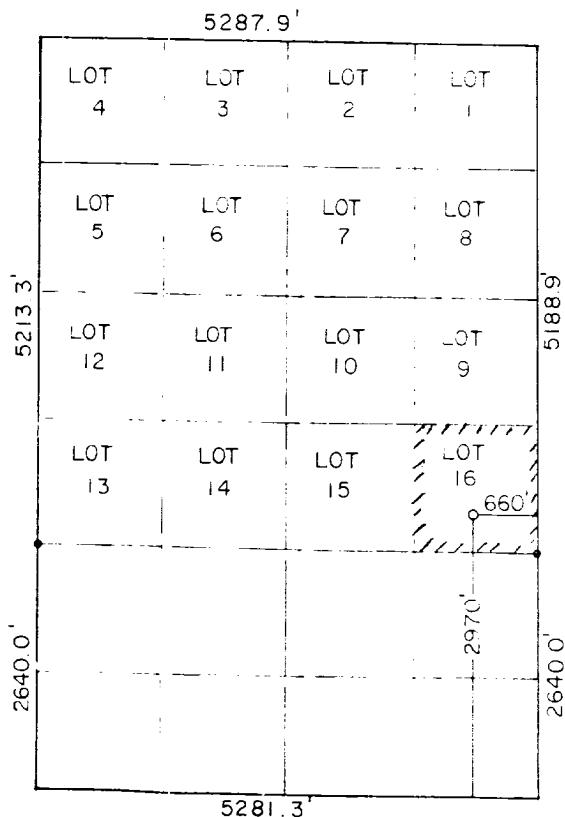
Operator GULF OIL CORP.			Lease EVANS STATE			Well No. 7
Unit Letter P	Section 3	Township 21S	Range 36E	County LEA		
Actual Footage Location of Well 2970 feet from the SOUTH line and 660 feet from the EAST line						
Ground Level Elev. 3525.2	Producing Formation TUBB		Pool HARDY		Dedicated Acreage 40 Acres	

1. Outline the acreage dedicated to the subject well by colored pencil or hachure marks on the plat below.
2. If more than one lease is dedicated to the well, outline each and identify the ownership thereof (both as to working interest and royalty)
3. If more than one lease of different ownership is dedicated to the well, have the interests of all owners been consolidated by communitization, unitization, force-pooling, etc?

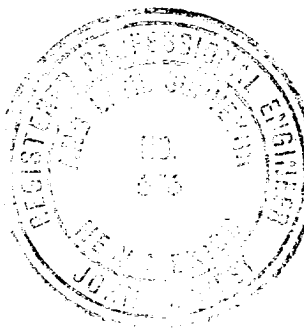
☐ Yes ☐ No If answer is "yes," type of consolidation _____

If answer is "no," list the owners and tract descriptions which have actually been consolidated. (Use reverse side of this form if necessary.) _____

No allowable will be assigned to the well until all interests have been consolidated (by communitization, unitization, forced-pooling, or otherwise) or until a non-standard unit, eliminating such interests, has been approved by the Commission.



SCALE: 1" = 2000'



CERTIFICATION

I hereby certify that the information contained herein is true and complete to the best of my knowledge and belief.

R.C. Anderson

Name
R.C. ANDERSON

Position
AREA PROD MGR

Company
GULF OIL CORP

Date
11-7-84

I hereby certify that the well location shown on this plat was plotted from field notes of actual surveys made by me or under my supervision, and that the same is true and correct to the best of my knowledge and belief.

Date Surveyed
11/6/84

Registered Professional Engineer and/or Land Surveyor

John W. West
Certificate No. **JOHN W. WEST 676**

Revised 1-1-65 3070

RECEIVED

NOV 13 1984

