

**EXICO OIL CONSERVATION COMMISS**  
**WELL LOCATION AND ACREAGE DEDICATION PLAT**

Form C-102  
 Supersedes C-128  
 Effective 1-1-85

All distances must be from the outer boundaries of the Section

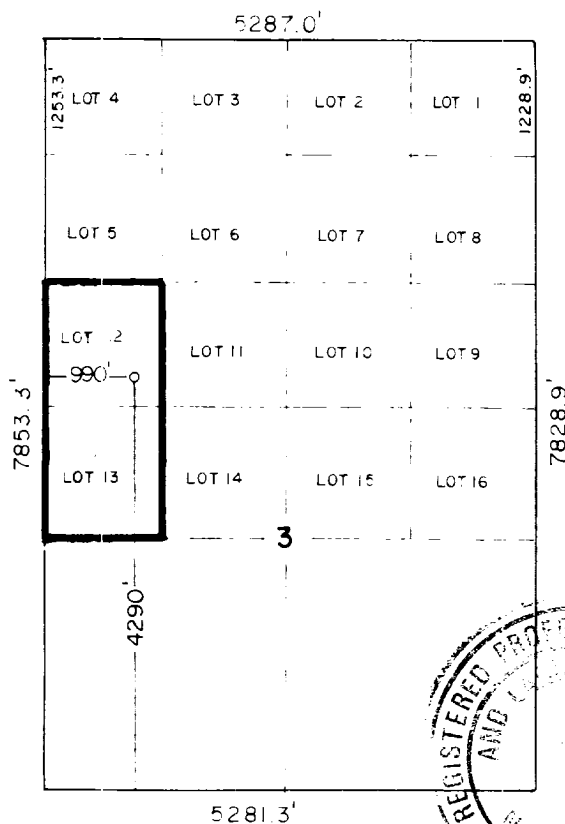
Operator <b>MEDEX SUPPLY CO.</b>			Lease <b>WALLACE STATE</b>		Well No. <b>11</b>
Tract Letter <b>1</b>	Section <b>3</b>	Township <b>21S</b>	Range <b>36E</b>	County <b>LEA</b>	
Actual Footage Location of Well: 990 feet from the <b>WEST</b> line and 4290 feet from the <b>SOUTH</b> line					
Ground Level Elev. <b>3531.6</b>	Producing Formation <b>Blinebry</b>		Pool <b>Oil Center Blinebry</b>		Dedicated Acreage: <b>80</b> Acres

1. Outline the acreage dedicated to the subject well by colored pencil or hatchure marks on the plat below.
2. If more than one lease is dedicated to the well, outline each and identify the ownership thereof (both as to working interest and royalty).
3. If more than one lease of different ownership is dedicated to the well, have the interests of all owners been consolidated by communitization, unitization, force-pooling, etc?

☐ Yes    ☐ No    If answer is "yes," type of consolidation \_\_\_\_\_

If answer is "no," list the owners and tract descriptions which have actually been consolidated (Use reverse side of this form if necessary.) \_\_\_\_\_

No allowable will be assigned to the well until all interests have been consolidated (by communitization, unitization, forced-pooling, or otherwise) or until a non-standard unit, eliminating such interests, has been approved by the Commission.



Scale: 1" = 2000'

**CERTIFICATION**

I hereby certify that the information contained herein is true and complete to the best of my knowledge and belief.

Name Judy Johnson

Position Agent

Company Me-Tex Supply Company

Date December 3, 1984

I hereby certify that the well location shown on this plat was plotted from field notes of actual surveys made by me or under my supervision, and that the same is true and correct to the best of my knowledge and belief.

Date Surveyed 12/1/84

Registered Professional Engineer and/or Land Surveyor

John W. West  
 Certificate No **JOHN W. WEST 676**  
**Ronald J. Eidsen 3239**