

AMENDED

30-125-29092

NO. OF COPIES RECEIVED	
DISTRIBUTION	
SANTA FE	
FILE	
U.S.G.S.	
LAND OFFICE	
OPERATOR	

NEW MEXICO OIL CONSERVATION COMMISSION

Form C-101
Revised 1-4-65

5A. Indicate Type of Lease	
STATE <input checked="" type="checkbox"/>	FEE <input type="checkbox"/>
5. State Oil & Gas Lease No. B-1732	

APPLICATION FOR PERMIT TO DRILL, DEEPEN, OR PLUG BACK

1a. Type of Work b. Type of Well OIL WELL <input checked="" type="checkbox"/> GAS WELL <input type="checkbox"/> OTHER <input type="checkbox"/> DRILL <input checked="" type="checkbox"/> DEEPEN <input type="checkbox"/> PLUG BACK <input type="checkbox"/> SINGLE ZONE <input checked="" type="checkbox"/> MULTIPLE ZONE <input type="checkbox"/>		7. Unit Agreement Name
2. Name of Operator Gulf Oil Corporation		8. Farm or Lease Name W. A. Ramsay (NCT-B)
3. Address of Operator P.O. Box 670 Hobbs, NM 88240		9. Well No. 8
4. Location of Well UNIT LETTER A LOCATED 905 FEET FROM THE NORTH LINE AND 990 FEET FROM THE East LINE OF SEC. 25 TWP. 21S RGE. 36E NMPM		10. Field and Pool, or Wellcut Drinkard
11. Elevation (Show whether DE, RT, etc.) 3514.7		12. County LAC
21A. Kind & Status Plug. Bond Blanket	21B. Drilling Contractor UNKNOWN	21C. Formation Drinkard
21D. Proposed Depth 7000	21E. History of Well Rotary	22. Approx. Date Work will Start January 15, 1985

PROPOSED CASING AND CEMENT PROGRAM

SIZE OF HOLE	SIZE OF CASING	WEIGHT PER FOOT	SETTING DEPTH	SACKS OF CEMENT	EST. TOP
14 3/4	11 3/4	42	400	350 ft ²	circulate
11	8 5/8	24 & 32	2700	1300 ft ³	circulate
7 7/8	5 1/2	15.5	TD	~1000 ft ³	Tie back to intermediate

Mud Program:

0-400 FW spud mud
400-2700 Saturated Brine Water
2700-TD FW - cut Brine 8.4-9.2 ppG 29-32 V/S To 20 cc WL

BOP's see attached 2000 WP Drawing

Note: This is an amended location moving well from 990 FNL to 905 FNL. Permit was issued on old location on 1-2-85.

IN ABOVE SPACE DESCRIBE PROPOSED PROGRAM: IF PROPOSAL IS TO DEEPEN OR PLUG BACK, GIVE DATA ON PRESENT PRODUCTIVE ZONE AND PROPOSED NEW PRODUCTIVE ZONE. GIVE BLOWOUT PREVENTER PROGRAM, IF ANY.

I hereby certify that the information above is true and complete to the best of my knowledge and belief.

Signed R. C. Anderson Date ABEA PROD MGR Date 1-4-84 MP

(This space for State Use)

ORIGINAL SIGNED BY JERRY SEXTON

DISTRICT 1 SUPERVISOR

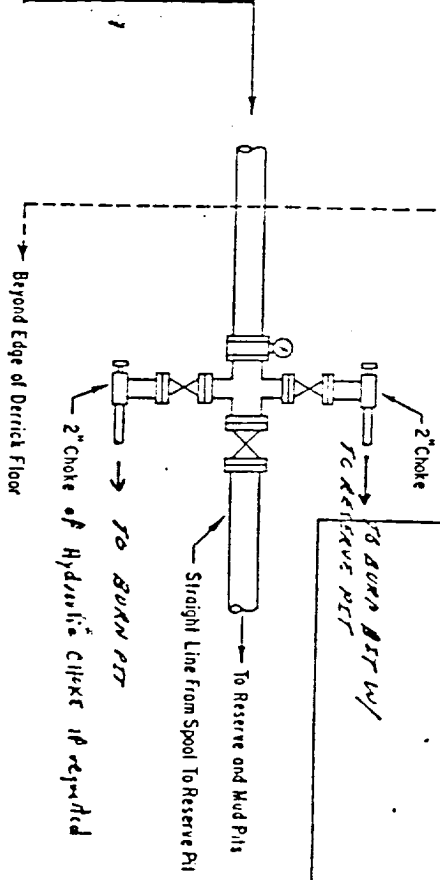
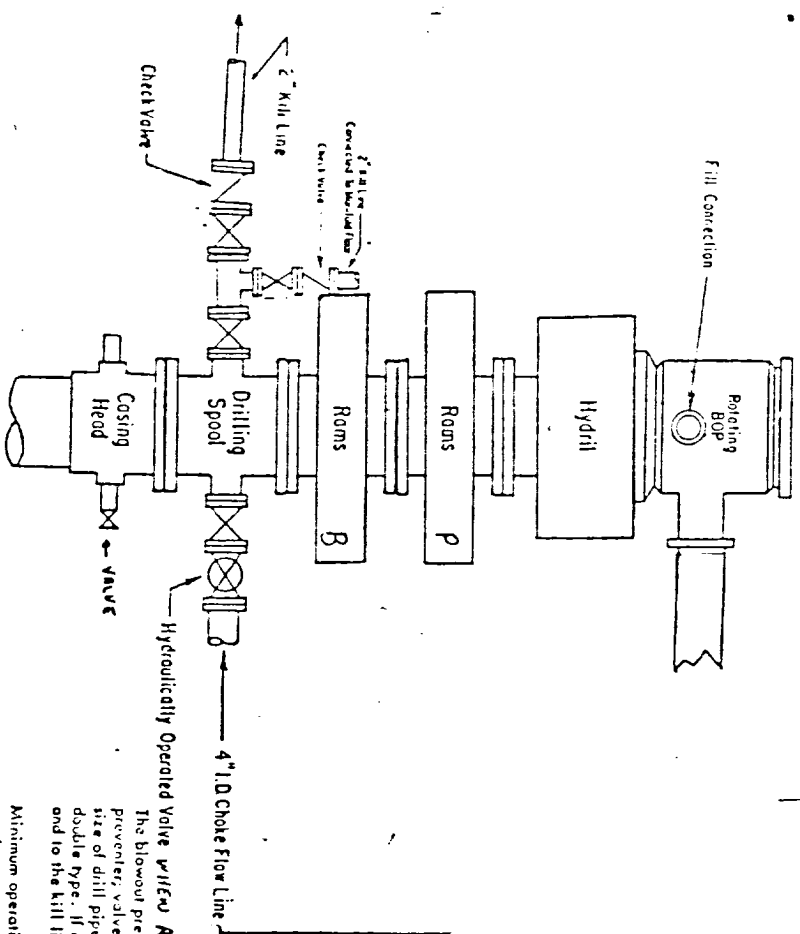
APPROVED BY _____ TITLE _____

DATE

JAN 14 1985

CONDITIONS OF APPROVAL, IF ANY:

Permit Expires 6 Months From Approval
Date Unless Drilling Underway.



ADDITIONS - DELETIONS - CHANGES
SPECIFY

NOTE: Wellhead Assembly means at any time the wellhead assembly, may, or will require the equipment to be installed during operations.

2000-3000 PSI WORKING PRESSURE
BOP HOOK - UP

SPECIFY WORKING PRESSURE

located, with control handles to indicate open and closed positions. A pressure reducer and regulator must be provided for operating the Hydril preventer. When requested, a second pressure reducer shall be available to limit operating fluid pressures to rom preventer. Gulf Region No. 38 hydraulic oil, an equivalent or better, is to be used as the fluid to operate the hydraulic equipment.

The choke manifold, the choke flow line, the choke lines and the relief lines are to be supported by metal stands and adequately anchored. The choke flow line, relief lines and choke lines shall be constructed as straight as possible and without sharp bends. Every valve access shall be maintained to the choke manifold. All valves are to be selected for operation in the presence of oil, gas, and drilling fluids. The choke flow line valves and valves of the relief lines connected to the drilling spools and all rom type preventers must be equipped with stem extensions, universal joints, if needed, and hand wheels which are to extend beyond the edge of the derrick substructure. All other valves shall be equipped with handles.

The blowout preventer assembly shall consist of one blind rom preventer and one pipe rom preventer, both hydraulically operated, a Hydril preventer, valves, chokes and connections, as illustrated. If a tapered drill string is used, a rom preventer shall be provided for each size of drill pipe. Casing and tubing must fit the preventer to be available as needed. The rom preventers may be two singles or a double type. If correct in size, the flanged outlets of the rom preventer may be used for connecting to the 4-inch I.D. choke flow line and to the kill line. The substructure height shall be sufficient to install a rotating blowout preventer.

Minimum operating equipment for the preventers and hydraulically operated valves shall be as follows: (1) multiple pumps, driven by a continuous source of power, capable of fluid charging the total accumulator volume from the nitrogen precharge pressure to its rated pressure within 2 minutes. Also, the pumps are to be connected to the hydraulic operating system which is to be a closed system. (2) the charging pumps shut down, the pressurized fluid volume stored in the accumulator shall be sufficient to close all the pressure-operated devices simultaneously within 49 seconds; after closure, the remaining accumulator pressure shall be not less than 1000 PSI with the remaining accumulator fluid volume at least 52 percent of the original. When requested, either an additional source of power, remote and equivalent, is to be available to operate the above pumps, or there shall be additional pumps operated by separate power and equal in performance capabilities.

NE MEXICO OIL CONSERVATION COMMISSIC
WELL LOCATION AND ACREAGE DEDICATION PLAT

Form C-102
Supersedes C-128
Effective 1-1-65

All distances must be from the outer boundaries of the Section

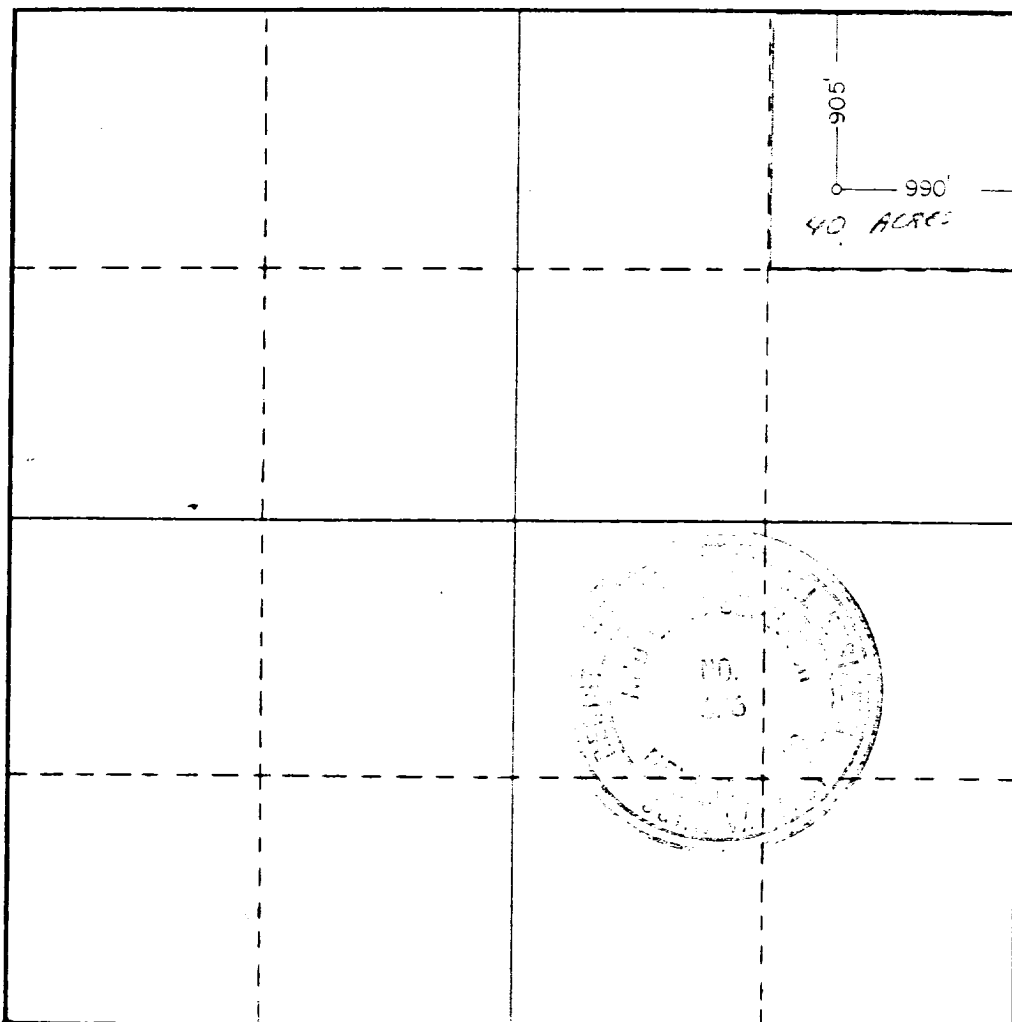
Operator GULF OIL CORP.		Lease W. A. RAMSEY NCT-B		Well No. 8
Unit Letter A	Section 25	Township 21S	Range 36E	County LEA
Actual Footage Location of Well: 905 feet from the NORTH line and 990 feet from the EAST line				
Ground Level Elev. 3514.7	Producing Formation Driftwood	Pool Driftwood	Dedicated Acreage: 40 Acres	

1. Outline the acreage dedicated to the subject well by colored pencil or hachure marks on the plat below.
2. If more than one lease is dedicated to the well, outline each and identify the ownership thereof (both as to working interest and royalty).
3. If more than one lease of different ownership is dedicated to the well, have the interests of all owners been consolidated by communitization, unitization, force-pooling, etc?

☐ Yes ☒ No If answer is "yes," type of consolidation _____

If answer is "no," list the owners and tract descriptions which have actually been consolidated. (Use reverse side of this form if necessary.) _____

No allowable will be assigned to the well until all interests have been consolidated (by communitization, unitization, forced-pooling, or otherwise) or until a non-standard unit, eliminating such interests, has been approved by the Commission.



CERTIFICATION

I hereby certify that the information contained herein is true and complete to the best of my knowledge and belief.

John W. West

John W. West

Position

D/G Eng.

Company

Gulf Oil

Date

1-4-84

I hereby certify that the well location shown on this plat was plotted from field notes of actual surveys made by me or under my supervision, and that the same is true and correct to the best of my knowledge and belief.

Date Surveyed

1/3/85

Registered Professional Engineer and/or Land Surveyor

John W. West

Certificate No. JOHN W. WEST, 615

RONALD J. EIDSON, 3239

0 330 660 990 1320 1650 1980 2310 2640 2970 3300 3630 3960 4290 4620 4950 5280 5610 5940 6270 6600

RECEIVED

JAN 10 1985

**O.C.D.
HUMAN RIGHTS OFFICE**