

30-025-29092

NO. OF COPIES RECEIVED	
DISTRIBUTION	
SANTA FE	
FILE	
U.S.G.S.	
LAND OFFICE	
OPERATOR	

NEW MEXICO OIL CONSERVATION COMMISSION

Form C-101
Revised 11-65

5A. Indicate Type of Lease STATE <input checked="" type="checkbox"/> FEE <input type="checkbox"/>
5. State Oil & Gas Lease No. B-1732
7. Unit Agreement Name
8. Farm or Lease Name W.A. RAMSAY (NCT-B)
9. Well No. 8
10. Field and Pool, or Wildcat DRINKARD
12. County LEA
19. Proposed Depth 7000
19A. Formation DRINKARD
20. Rotary or C.T. ROTARY
21. Elevations (Show whether DF, RT, etc.) 3516.5 GLE
21A. Kind & Status Plug. Bond BLANKET
21B. Drilling Contractor UNKNOWN
22. Approx. Date Work will start JANUARY 10 1985

APPLICATION FOR PERMIT TO DRILL, DEEPEN, OR PLUG BACK

1a. Type of Work b. Type of Well OIL WELL <input checked="" type="checkbox"/> GAS WELL <input type="checkbox"/> OTHER <input type="checkbox"/> DRILL <input checked="" type="checkbox"/> DEEPEN <input type="checkbox"/> PLUG BACK <input type="checkbox"/> SINGLE ZONE <input checked="" type="checkbox"/> MULTIPLE ZONE <input type="checkbox"/>	2. Name of Operator GULF CORPORATION	3. Address of Operator P.O. Box 670 HOBBS, NEW MEXICO 88240	4. Location of Well UNIT LETTER A LOCATED 990 FEET FROM THE NORTH LINE AND 990 FEET FROM THE EAST LINE OF SEC. 25 TWP. 21S RGE. 36E NMPM
23.			

PROPOSED CASING AND CEMENT PROGRAM

SIZE OF HOLE	SIZE OF CASING	WEIGHT PER FOOT	SETTING DEPTH	SACKS OF CEMENT	EST. TOP
14 3/4	11 3/4	42	400	350 ft ³	CIRCULATE
11	8 5/8	24 & 32	2700	1300 ft ³	CIRCULATE
7 7/8	5 1/2	15.5	TD +	~1000 ft ³	TE-BACK TO INTERMEDIATE

MUD PROGRAM:

0-400 FW SAUD MUD
400-2700 SATURATED BRINE WATER 100 ppq
2700-TD FW-CUT BRINE 8.4-9.2 ppq 29-32 VIS TO 20 cc WL 9.5 pH

BOP PROGRAM:

SEE ATTACHED DRAWING FOR 2-3000 psi WORKING PRESSURE HOOKUP

ON SURFACE AND INTERMEDIATE.

Permit Expires 6 Months From Approval
Date Unless Drilling Underway.

IN ABOVE SPACE DESCRIBE PROPOSED PROGRAM; IF PROPOSAL IS TO DEEPEN OR PLUG BACK, GIVE DATA ON PRESENT PRODUCTIVE ZONE AND PROPOSED NEW PRODUCTIVE ZONE. GIVE BLOWOUT PREVENTER PROGRAM, IF ANY.

I hereby certify that the information above is true and complete to the best of my knowledge and belief.

Signed Jerry Sexton Title AREA PROD MGR Date 12-28-84

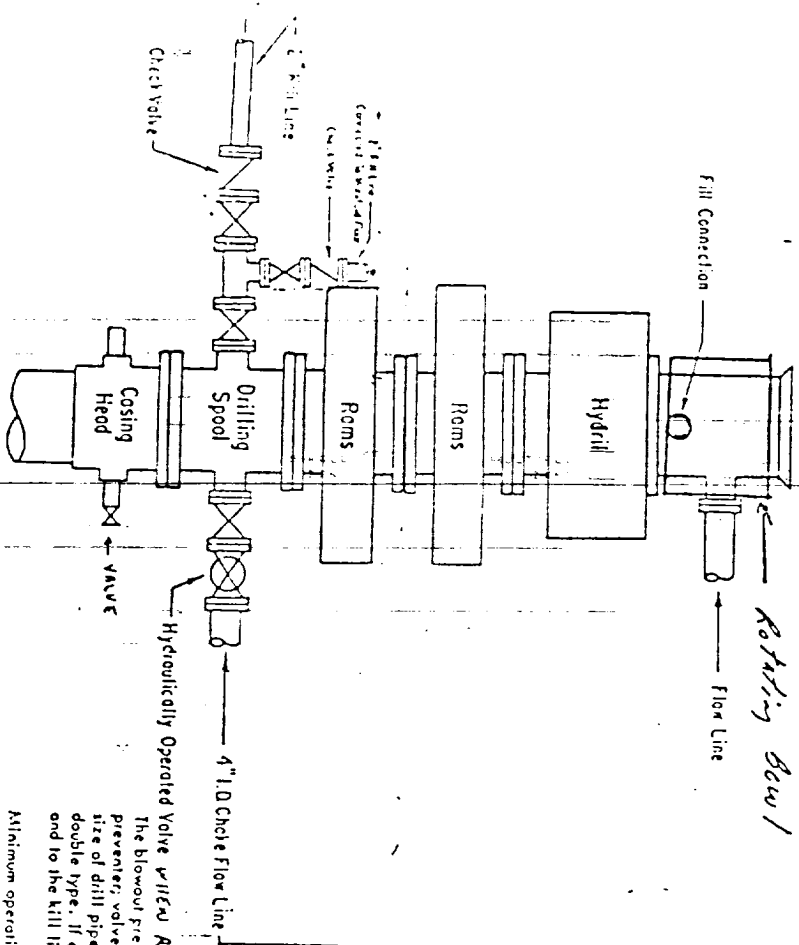
(This space for State Use)

ORIGINAL SIGNED BY JERRY SEXTON
DISTRICT 1 SUPERVISOR

APPROVED BY _____ TITLE _____ DATE _____

CONDITIONS OF APPROVAL, IF ANY:

JAN - 2 1985

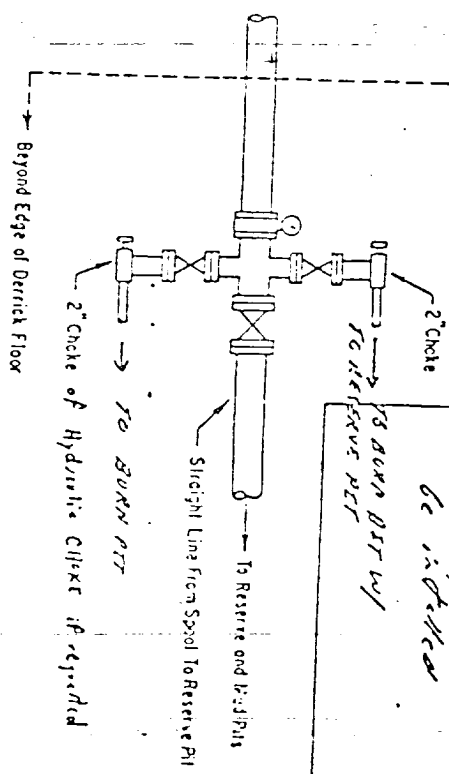


THE BLOWOUT PREVENTER ASSEMBLY SHALL CONSIST OF ONE BLIND RAM PREVENTER AND ONE PIPE RAM PREVENTER, BOTH HYDRAULICALLY OPERATED. A HYDRIL PREVENTER, VALVES, CHOKES AND CONNECTIONS, AS ILLUSTRATED. IF A TAPERED DRILL STRING IS USED, A RAM PREVENTER SHALL BE PROVIDED FOR EACH SIZE OF DRILL PIPE. CASING AND TUBING RAMS TO FIT THE PREVENTERS ARE TO BE AVAILABLE AS NEEDED. THE RAM PREVENTERS MAY BE PROVIDED FOR EACH DOUBLE TYPE. IF CORRECT IN SIZE, THE FLANGED OUTLET OF THE RAM PREVENTER MAY BE USED FOR CONNECTING TO THE 4-INCH I.D. CHOKE FLOW LINE AND TO THE KILL LINE. THE SUBSTRUCTURE HEIGHT SHALL BE SUFFICIENT TO INSTALL A ROTATING BLOWOUT PREVENTER.

Minimum operating requirement for the preventers and hydraulically operated valves shall be as follows: (1) multiple pumps, driven by a continuous source of power, capable of fluid charging the fluid accumulator volume from the nitrogen precharge pressure to its rated pressure within 2 minutes. Also, the pumps are to be connected to the hydraulic operating system which is to be a closed system. (2) the charging pumps shut down, the pressurized fluid volume stored in the accumulator shall be sufficient to close all the pressure-operated devices simultaneously within 1/2 second after closure. The remaining accumulator pressure shall be not less than 1000 PSI with the remaining accumulator fluid volume of not less than 50 percent of the original. When required, either an additional source of power, remote equal in performance capabilities.

The closing manifold and remote closing manifold shall have a separate control for each pressure-operated device. Controls are to be installed, with control handles to indicate open and closed positions. A pressure reducer and regulator must be provided for operating the Hydril preventer. When required, a second pressure reducer shall be available to limit operating fluid pressures to ram preventers. Gulf Region No. 38 hydraulic oil, or equivalent or better, is to be used on the fluid to operate the hydraulic equipment.

The choke manifold, the choke flow line, the choke lines and the relief lines are to be supported by metal hangers and adequately anchored. The choke flow line, relief lines and choke lines shall be constructed as straight as possible and without sharp bends. Any or a size excess shall be maintained to the choke manifold. All valves are to be selected for operation in the presence of oil, gas, and drilling fluid. The choke flow line valves and valves of the relief lines connected to the drilling spools and all ram type preventers must be equipped with stem extension, universal joints, if needed, and hand wheels which are to extend beyond the edge of the derrick structure. All other valves shall be equipped with handles.



ADDITIONS - DELETIONS - CHANGES SPECIFY

NOTE: "Notes Reported" means at any time the Gulf Region can, may, or will require the equipment to be installed during operations.

Rotating Bowl to be installed

38 down BOP w/ to Reserve Pit

NEW MEXICO OIL CONSERVATION COMMISSION
WELL LOCATION AND ACREAGE DEDICATION PLAT

Form C-102
Supersedes C-128
Effective 1-1-65

All distances must be from the outer boundaries of the Section

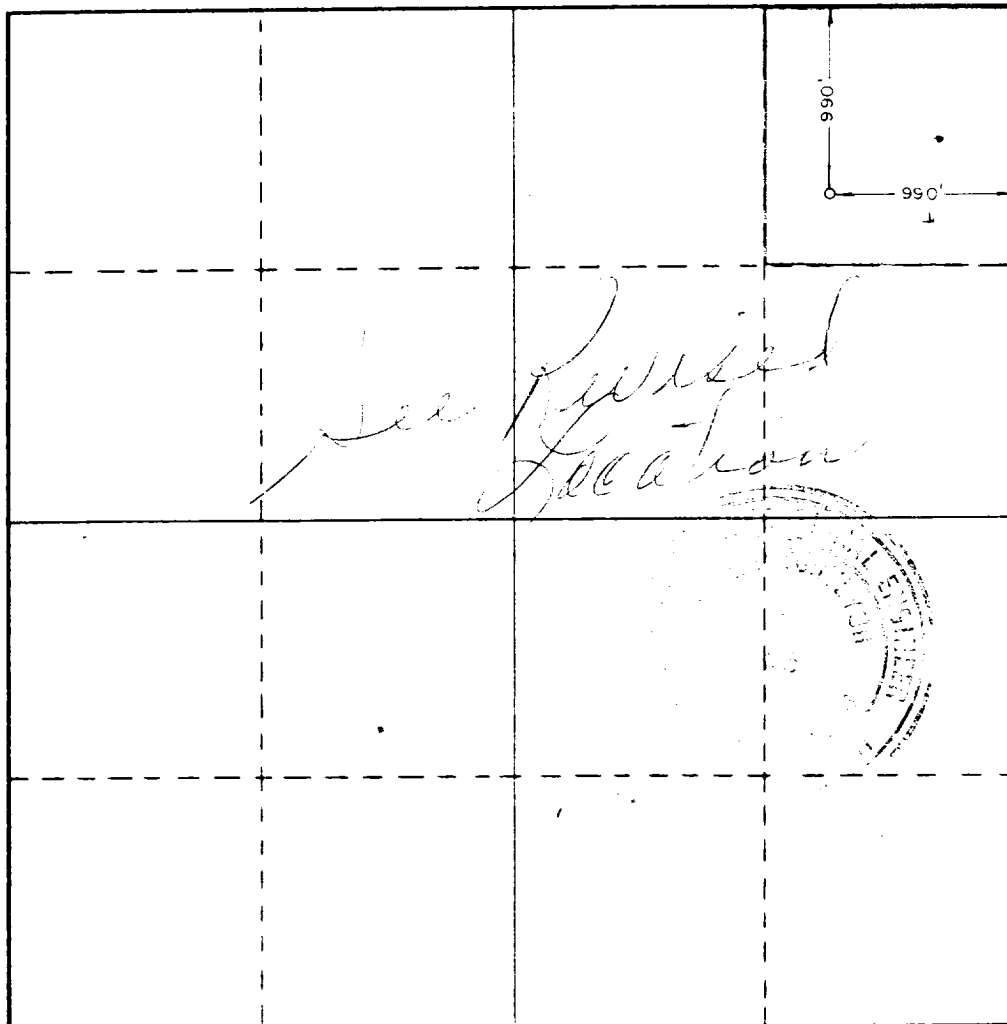
Operator GULF OIL CORP.		Lease W. A. RAMSAY NCT-B		Well No. 8	
Unit Letter A	Section 25	Township 21S	Range 36E	County LEA	
Actual Footage Location of Well: 990 feet from the NORTH line and 990 feet from the EAST line					
Ground Level Elev. 3516.5	Producing Formation DRINKARD		Pool DRINKARD		Dedicated Acreage: 40 Acres

1. Outline the acreage dedicated to the subject well by colored pencil or hatchure marks on the plat below.
2. If more than one lease is dedicated to the well, outline each and identify the ownership thereof (both as to working interest and royalty).
3. If more than one lease of different ownership is dedicated to the well, have the interests of all owners been consolidated by communitization, unitization, force-pooling, etc?

☐ Yes ☐ No If answer is "yes," type of consolidation _____

If answer is "no," list the owners and tract descriptions which have actually been consolidated. (Use reverse side of this form if necessary.) _____

No allowable will be assigned to the well until all interests have been consolidated (by communitization, unitization, forced-pooling, or otherwise) or until a non-standard unit, eliminating such interests, has been approved by the Commission.



CERTIFICATION

I hereby certify that the information contained herein is true and complete to the best of my knowledge and belief.

Name

LEE R.C. ANDERSON

Position

AREA PROD MGR

Company

GULF OIL CORP

Date

12-28-84

I hereby certify that the well location shown on this plat was plotted from field notes of actual surveys made by me or under my supervision, and that the same is true and correct to the best of my knowledge and belief.

Date Surveyed

12/18/84

Registered Professional Engineer and/or Land Surveyor

Certificate No.

JOHN W. WEST

676

RONALD

3239

330 660 990 1320 1650 1980 2310 2640 2970 3300 3630 3960 4290 4620 4950 5280 5610 5940 6270 6600