

30-025-29183

NO. OF COPIES RECEIVED	
DISTRIBUTION	
SANTA FE	
FILE	
U.S.G.S.	
LAND OFFICE	
OPERATOR	

NEW MEXICO OIL CONSERVATION COMMISSION

Form C-101
Revised 1-1-65

5A. Indicate Type of Lease	
STATE <input checked="" type="checkbox"/>	FEE <input type="checkbox"/>
5. State Oil & Gas Lease No.	

APPLICATION FOR PERMIT TO DRILL, DEEPEN, OR PLUG BACK

1a. Type of Work				7. Unit Agreement Name	
b. Type of Well OIL WELL <input type="checkbox"/> GAS WELL <input checked="" type="checkbox"/> OTHER <input type="checkbox"/>				8. Farm or Lease Name RR BELL (NCT-C) Com	
2. Name of Operator Gulf Oil Corp.				9. Well No. 5	
3. Address of Operator P. O. Box 670, Hobbs, NM 88240				10. Field and Pool, or Wildcat EUMONT	
4. Location of Well UNIT LETTER <u>E</u> LOCATED <u>1470</u> FEET FROM THE <u>NORTH</u> LINE AND <u>1310</u> FEET FROM THE <u>WEST</u> LINE OF SEC. <u>15</u> TWP. <u>21 S</u> RGE. <u>36 E</u> HMPM				12. County LEA	
19. Proposed Depth 3600		19A. Formation EUMONT		20. Rotary or C.T. ROTARY	
21. Elevations (Show whether D.P., RT, etc.) 3577.1 GLE		21A. Kind & Status Plug. Bond BLANKET		21B. Drilling Contractor UNKNOWN	
				22. Approx. Date Work will start 4/10/85	

PROPOSED CASING AND CEMENT PROGRAM

SIZE OF HOLE	SIZE OF CASING	WEIGHT PER FOOT	SETTING DEPTH	SACKS OF CEMENT	EST. TOP
11	8 5/8	24	450	300 SX (400 FT ³)	SURFACE
7 7/8	5 1/2	15.5	3400	600 SX (400 FT ³)	SURFACE
4 3/4	NONE	N/A	3600	NONE	N/A

PLAN TO SET 5 1/2" CASING AT 3400' - MOVE OUT RIG - MOVE IN PULLING UNIT AND DRILL OUT + OPEN HOLE - COMP @ 3600'.

SEE ATTACHED BOP DRAWING FOR 2000-3000 * WORKING PRESSURE.
MWD PROGRAM S 0-450' FW SPND MWD 8.6-8.8 PPG 32-36 VIS 89PH
450-3400' BW 10.0-10.2 PPG 29 VIS 9-10 PH
3400-3600 Air Foam

IN ABOVE SPACE DESCRIBE PROPOSED PROGRAM; IF PROPOSAL IS TO DEEPEN OR PLUG BACK, GIVE DATA ON PRESENT PRODUCTIVE ZONE AND PROPOSED NEW PRODUCTIVE ZONE. GIVE BLOWOUT PREVENTER PROGRAM, IF ANY.

I hereby certify that the information above is true and complete to the best of my knowledge and belief.

Signed R. C. Anderson Title AREA PROD MGR Date 3-15-85

(This space for State Use)

ORIGINAL SIGNED BY JERRY SEXTON

APPROVED BY DISTRICT 1 SUPERVISOR TITLE _____

CONDITIONS OF APPROVAL, IF ANY:

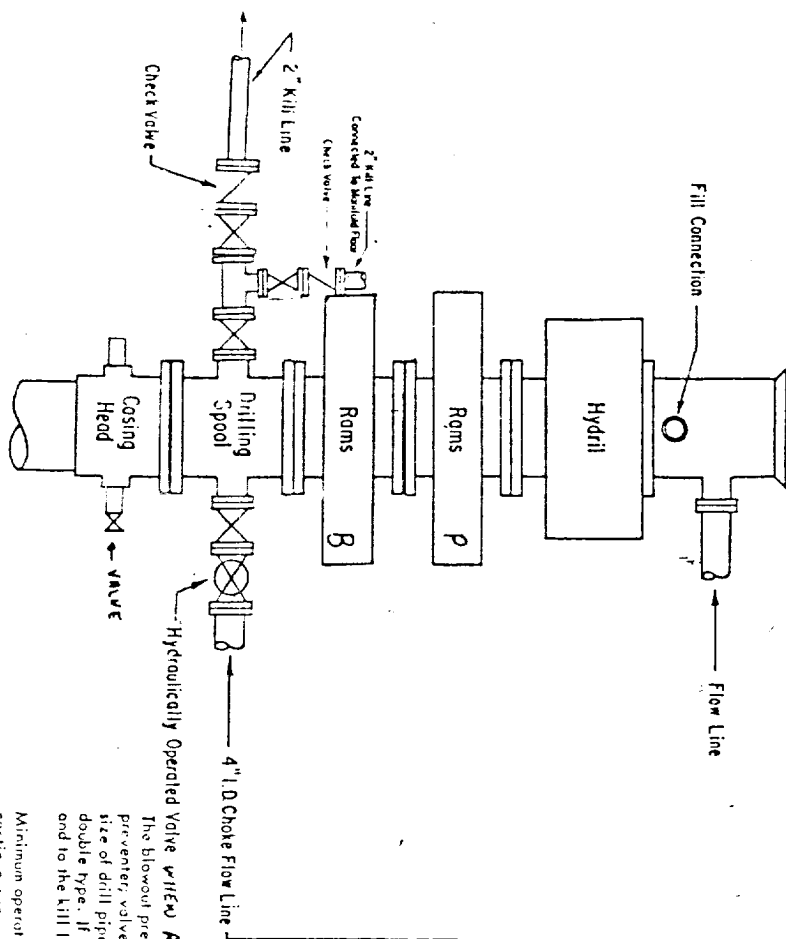
DATE MAY 24 1985

Permit Expires 6 Months From Approval
Date Unless Drilling Underway.

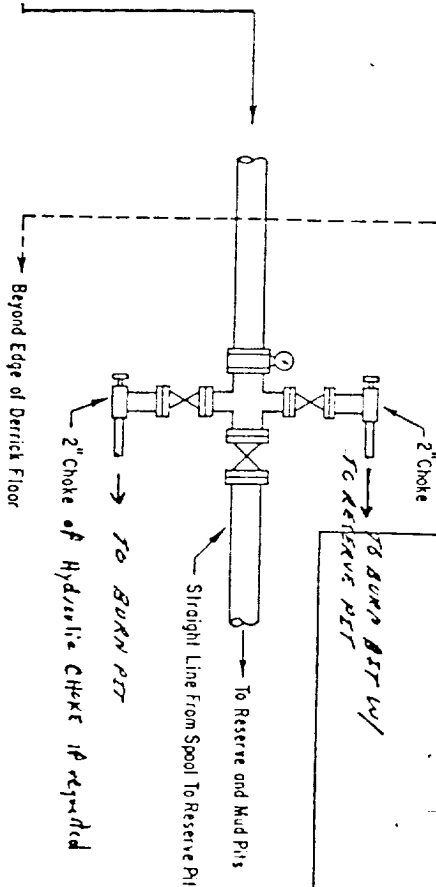
RECEIVED

MAR 19 1985

U.S.D.
HOLDS OFFICE



Blowout preventer assembly shall consist of one blind ram preventer and one pipe ram preventer, both hydraulically operated; a Hydril preventer; valves; chokes and connections, as illustrated. If a tapered drill string is used, a ram preventer shall be provided for each size of drill pipe. Casing and tubing rams to fit the preventers are to be available as needed. The ram preventers may be two singles or a double type. If correct in size, the flanged outlets of the ram preventer may be used for connecting to the 4-inch I.D. choke flow line and to the kill line. The substructure height shall be sufficient to install a rotating blowout preventer.



ADDITIONS - DELETIONS - CHANGES
SPECIFY

NOTES: "As Requested" means at any time the drill supervisor can, may, or will require the equipment to be installed during operations.

2000-3000 PSI WORKING PRESSURE BOP HOOK-UP FOR LARGE CASINGS

SPECIFY WORKING PRESSURE

The closing manifold and remote closing manifold shall have a separate control for each pressure-operated device. Controls are to be labeled, with control handles to indicate open and closed positions. A pressure reducer and regulator must be provided for operating the Hydril preventer. When requested, a second pressure reducer shall be available to limit operating fluid pressures to ram preventers. Gull Legion No. 38 hydraulic oil, or equivalent or better, is to be used as the fluid to operate the hydraulic equipment.

The choke manifold, the choke flow line, the choke lines and the relief lines are to be supported by metal stands and adequately anchored. The choke flow line, relief lines and choke lines shall be constructed as straight as possible and without sharp bends. Easy and safe access shall be maintained to the choke manifold. All valves are to be selected for operation in the presence of oil, gas, and drilling fluids. The choke flow line valves and valves of the relief lines connected to the drilling spool and all ram type preventers must be equipped with stem extensions, universal joints if needed, and hand wheels which are to extend beyond the edge of the derrick substructure. All other valves shall be equipped with handles.

RECEIVED

MAR 19 1985

ACB
HUMAN RIGHTS OFFICE

**NEW MEXICO OIL CONSERVATION COMMISSION
WELL LOCATION AND ACREAGE DEDICATION PLAT**

Form C-102
Supersedes C-128
Effective 1-1-65

All distances must be from the outer boundaries of the Section

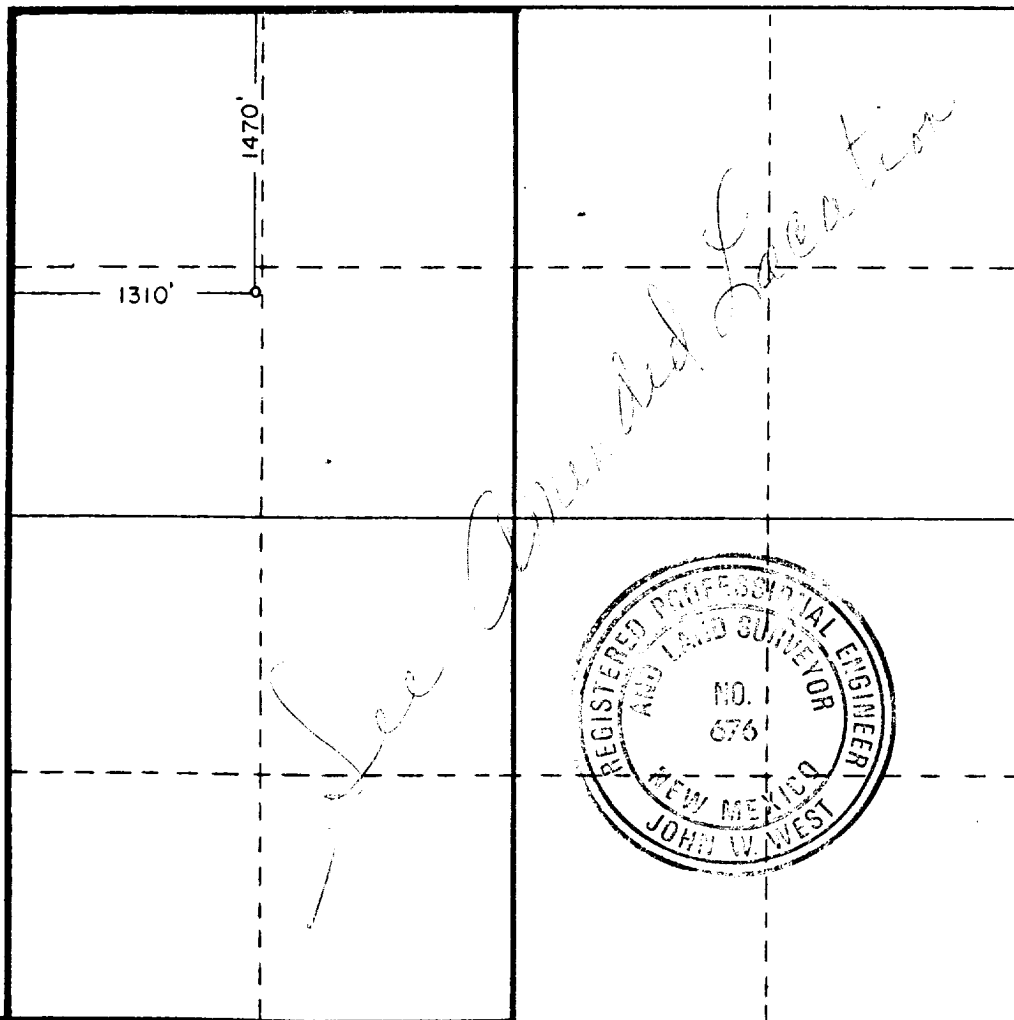
Operator GULF OIL CORP.			Lease R.R. BELL NCT-C COM		Well No. 5
Unit Letter E	Section 15	Township 21S	Range 36E	County LEA	
Location of Well: 1470 feet from the NORTH line and 1310 feet from the WEST line					
Ground Level Elev. 3577.1	Producing Formation <i>Penrose Yates Thruwa</i>		Pool <i>Eumont Gas</i>		Dedicated Acreage: 320 Acres

1. Outline the acreage dedicated to the subject well by colored pencil or hachure marks on the plat below.
2. If more than one lease is dedicated to the well, outline each and identify the ownership thereof (both as to working interest and royalty).
3. If more than one lease of different ownership is dedicated to the well, have the interests of all owners been consolidated by communitization, unitization, force-pooling, etc?

☐ Yes ☐ No If answer is "yes," type of consolidation _____

If answer is "no," list the owners and tract descriptions which have actually been consolidated. (Use reverse side of this form if necessary.) _____

No allowable will be assigned to the well until all interests have been consolidated (by communitization, unitization, forced-pooling, or otherwise) or until a non-standard unit, eliminating such interests, has been approved by the Commission.



CERTIFICATION

I hereby certify that the information contained herein is true and complete to the best of my knowledge and belief.

R.D. Pitre

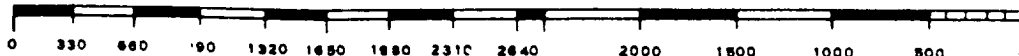
Name **R.D. PITRE**
 Position **AREA ENGINEER**
 Company **GULF OIL CORP.**
 Date **5-22-85**

I hereby certify that the well location shown on this plat was plotted from field notes of actual surveys made by me or under my supervision, and that the same is true and correct to the best of my knowledge and belief.

Date Surveyed **3/11/85**
 Registered Professional Engineer and/or Land Surveyor

John W. West

Certificate No. **JOHN W. WEST, 676**
RONALD J. EIDSON, 3239



RECEIVED

MAY 28 1985

O.C.R.
HOBBS OFFICE