

OIL CONSERVATION DIVISION

P.O. Box 2088

Santa Fe, New Mexico 87504-2088

DISTRICT I

P.O. Box 1980, Hobbs, NM 88240

DISTRICT II

P.O. Drawer DD, Artesia, NM 88210

DISTRICT III

1000 Rio Brazos Rd., Aztec, NM 87410

WELL LOCATION AND ACREAGE DEDICATION PLAT

All Distances must be from the outer boundaries of the section

Operator Chevron U.S.A. Inc.			Lease Bell-Janda Gas Com		Well No. 2
Unit Letter E	Section 15	Township 21S	Range 36E	County Lea	

Actual Footage Location of Well:

1440 feet from the North line and 1310 feet from the West line			
Ground level Elev. 3577' GL	Producing Formation Eumont Yates-Queen	Pool Eumont Yates/Queen	Dedicated Acreage: 320 Acres

1. Outline the acreage dedicated to the subject well by colored pencil or hatchure marks on the plat below.

2. If more than one lease is dedicated to the well, outline each and identify the ownership thereof (both as to working interest and royalty).

3. If more than one lease of different ownership is dedicated to the well, have the interest of all owners been consolidated by communitization, unitization, force-pooling, etc.?

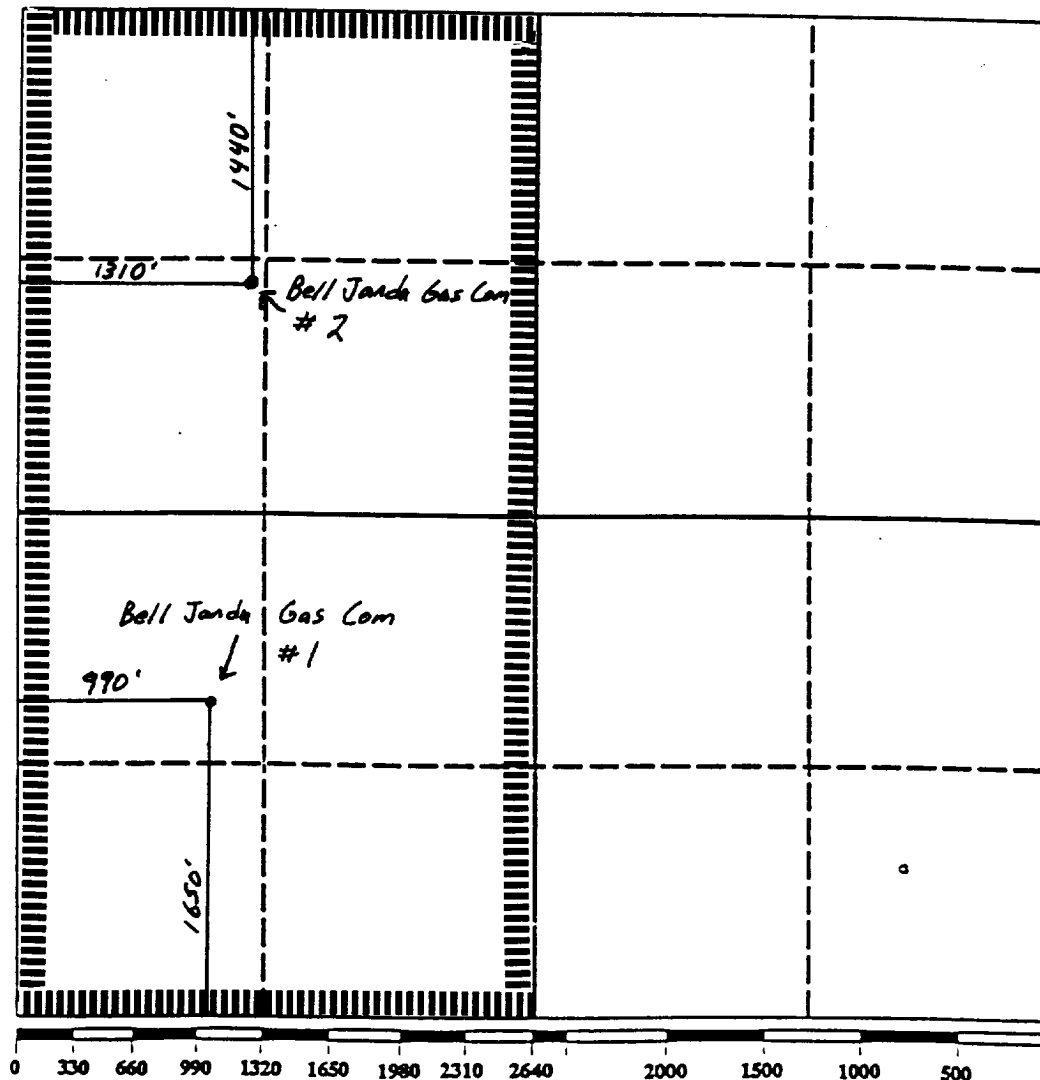
☐ Yes

☐ No

If answer is "yes" type of consolidation

If answer is "no" list the owners and tract descriptions which have actually been consolidated. (Use reverse side of this form if necessary.)

No allowable will be assigned to the well until all interests have been consolidated (by communitization, unitization, forced-pooling, or otherwise) or until a non-standard unit, eliminating such interest, has been approved by the Division.



OPERATOR CERTIFICATION

I hereby certify that the information contained herein is true and complete to the best of my knowledge and belief.

Signature

D. M. Bohon

Printed Name

D. M. Bohon

Position

Technical Assistant

Company

Chevron U.S.A. Inc.

Date

2/26/91

SURVEYOR CERTIFICATION

I hereby certify that the well location shown on this plat was plotted from field notes of actual surveys made by me or under my supervision, and that the same is true and correct to the best of my knowledge and belief.

Date Surveyed

Signature & Seal of
Professional Surveyor

Certificate No.

NEW MEXICO OIL CONSERVATION COMMISSION
WELL LOCATION AND ACREAGE DEDICATION PLAT

Form O-102
Supersedes O-128
Effective 1-1-85

All distances must be from the outer boundaries of the Section

Operator GULF OIL CORP.			Lessee R.R. BELL NCT-C COM			Well # 5
Section Letter E	Section 15	Township 21S	Range 36E	County LEA		

Location of Well:
1440 feet from the NORTH line and 1310 feet from the WEST line

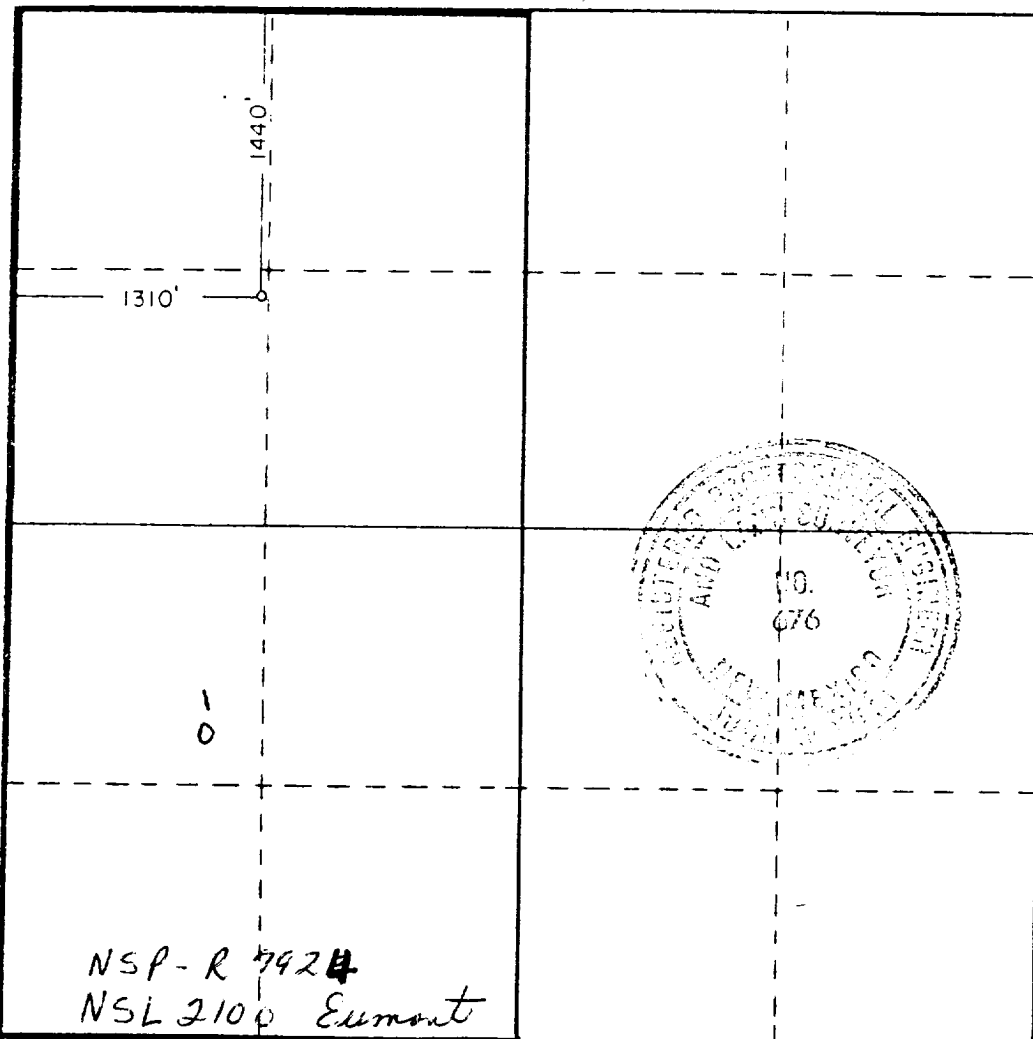
Ground Level Elev. 3577.1	Producing Formation Perse, Yates, 7 Rivers	Pool Eumont Max	Dedicated Acreage 320
------------------------------	---	--------------------	--------------------------

1. Outline the acreage dedicated to the subject well by colored pencil or hachure marks on the plat below.
2. If more than one lease is dedicated to the well, outline each and identify the ownership thereof (both as to working interest and royalty).
3. If more than one lease of different ownership is dedicated to the well, have the interests of all owners been consolidated by communitization, unitization, force-pooling, etc?

☐ Yes ☐ No If answer is "yes," type of consolidation _____

If answer is "no," list the owners and tract descriptions which have actually been consolidated. (Use reverse side of this form if necessary.) _____

No allowable will be assigned to the well until all interests have been consolidated (by communitization, unitization, forced-pooling, or otherwise) or until a non-standard unit, eliminating such interests, has been approved by the Commission.



CERTIFICATION

I hereby certify that the information contained herein is true and complete to the best of my knowledge and belief.

Name *R.D. Pate*
Position *Area Engr.*
Gulf Oil
Date *6/24/85*

I hereby certify that the well location shown on this plat was plotted from field notes of actual surveys made by me or under my supervision, and that the same is true and correct to the best of my knowledge and belief.

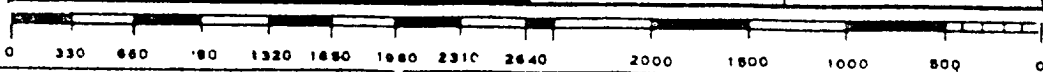
REVISED 6/24/85

Date Surveyed 3/11/85

Registered Professional Engineer and/or Land Surveyor

John W. West
Certificate No. JOHN W. WEST, 676

RONALD J. EIDSON, 3239



Gulf Oil Exploration and Production Company

R. C. Anderson
PRODUCTION MANAGER
HOBBS AREA

July 3, 1985

P. O. Box 670
Hobbs, NM 88240

Re: Administrative Application for
Unorthodox Location
R. R. Bell (NCT-C) Well No. 5
Lea County, New Mexico

Mr. R. L. Stamets
New Mexico Oil Conservation Division
P. O. Box 2088
Santa Fe, New Mexico 87501

Dear Sir:

Chevron USA Inc. respectfully requests administrative approval for an unorthodox location for the subject well. This Eumont Gas completion is located 1440' FNL and 1310' FWL of Section 15-T21S-R36E, Lea County, New Mexico.

The original Order No. R-7924 granted approval for an unorthodox location at 1470' FNL and 1310' FWL. A non-standard gas proration unit was also authorized under this order. Upon commencement of drilling operations, it was necessary to move the proposed location to avoid interference from an existing 6" gas gathering pipeline crossing the location. Verbal approval to move the location 30' North was received from Mr. G. P. Quintana, of the OCD, in a telephone conversation with Mr. K. R. Pulliam, of this office, on June 24, 1985.

Please find attached forms C-101 and C-102, BOP Diagram, offset operators list, and a plat showing leases and well locations. Offset operators are being notified of our application by a registered copy of this letter. If any questions, please contact M. W. Casey at 505-393-4121.

Yours very truly,


R. C. ANDERSON

MWC/skc
Att'd

cc: J. T. Sexton-OCD Hobbs
Offset Operators



A DIVISION OF GULF OIL CORPORATION

NO. OF COPIES RECEIVED	
DISTRIBUTION	
SANTA FE	
FILE	
U.S.G.S.	
LAND OFFICE	
OPERATOR	

Amended
NEW MEXICO OIL CONSERVATION COMMISSION

Permit Expires 6 Months From Approval
Date Unless Drilling Underway.

Form C-101
Revised 1-1-65

5A. Indicate Type of Lease
STATE ☒ FEE ☐
5. State Oil & Gas Lease No.

APPLICATION FOR PERMIT TO DRILL, DEEPEN, OR PLUG BACK

1a. Type of Work b. Type of Well OIL WELL <input type="checkbox"/> GAS WELL <input checked="" type="checkbox"/> OTHER <input type="checkbox"/> DRILL <input checked="" type="checkbox"/> DEEPEN <input type="checkbox"/> PLUG BACK <input type="checkbox"/> SINGLE ZONE <input checked="" type="checkbox"/> MULTIPLE ZONE <input type="checkbox"/>		7. Unit Agreement Name
2. Name of Operator Gulf Oil Corp.		8. Farm or Lease Name R.R. Bell (WET-CK)
3. Address of Operator P. O. Box 670, Hobbs, NM 88240		9. Well No. 5
4. Location of Well UNIT LETTER <u>E</u> LOCATED <u>1440</u> FEET FROM THE <u>North</u> LINE AND <u>1310</u> FEET FROM THE <u>West</u> LINE OF SEC. <u>15</u> TWP. <u>21S</u> RCE. <u>36E</u> NMPM		10. Field and Pool, or Wildcat Eumort
12. County Lin		
19. Proposed Depth 3600	19A. Formation Eumort	20. Rotary or C.T. Rotary
21. Elevations (Show whether DF, RT, etc.) 3577.1 GL	21A. Kind & Status Plug Bond Blanket	22. Approx. Date Work will start ASAP

PROPOSED CASING AND CEMENT PROGRAM

SIZE OF HOLE	SIZE OF CASING	WEIGHT PER FOOT	SETTING DEPTH	SACKS OF CEMENT	EST. TOP
11	8 5/8	24	450	300.24	surf
7 1/8	5 1/2	15.5	3400	600.24	surf
4 3/4	NONE	N/A	3600	NONE	N/A

Plan to set 5 1/2" csq at 3400' - move out rig - move in pulling it out & drill out to open hole complete @ 3600'

Mud Program: 0'-450' FW Spud mud 8.6-8.8 ppg, 32-36 vis, 8-4p
450'-3400' BW 10.0-10.2 ppg, 29 vis, 9-10, pH
3400'-3600' Air foam

See Attached GOP Drawing for 2000-3000# W.P.

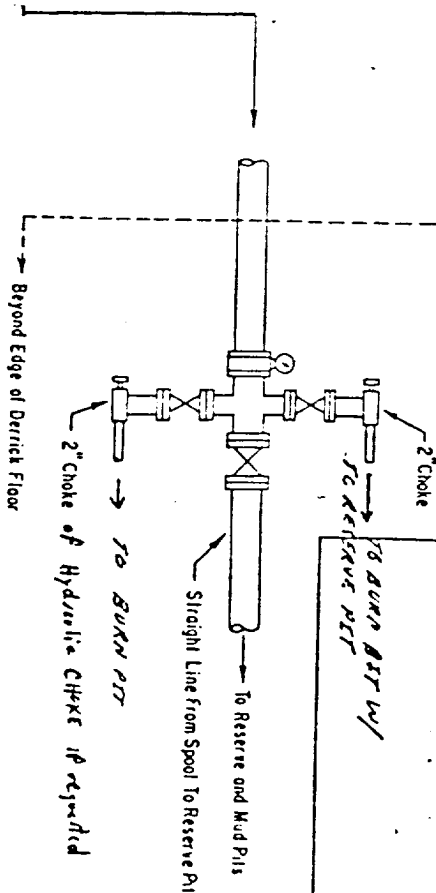
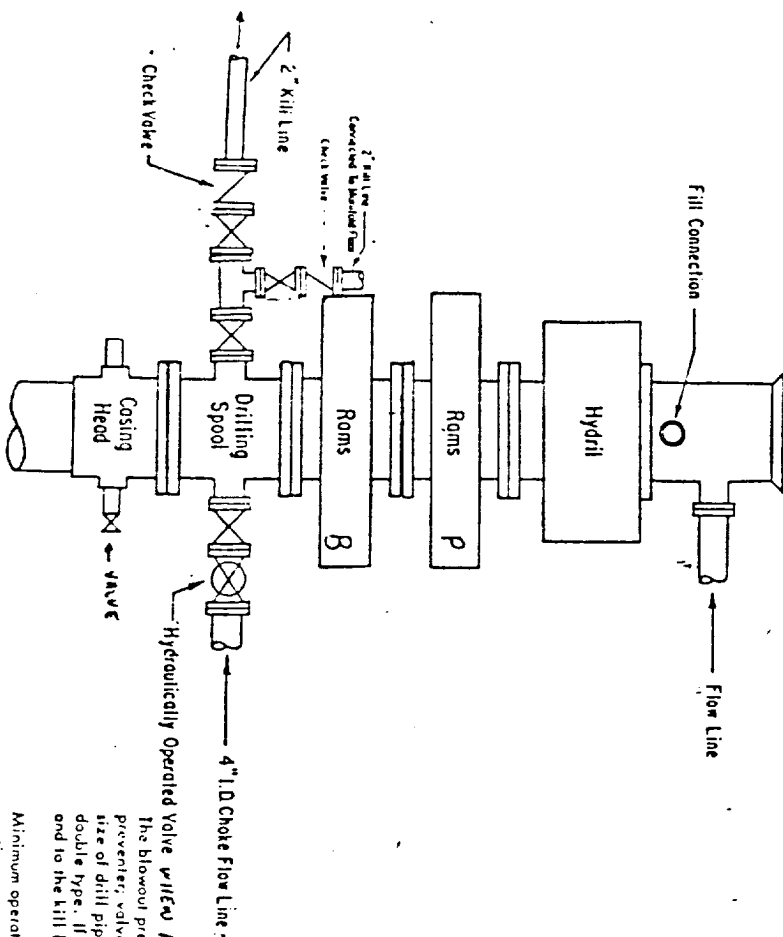
IN ABOVE SPACE DESCRIBE PROPOSED PROGRAM; IF PROPOSAL IS TO DEEPEN OR PLUG BACK, GIVE DATA ON PRESENT PRODUCTIVE ZONE AND PROPOSED NEW PRODUCTIVE ZONE. GIVE BLOWOUT PREVENTER PROGRAM, IF ANY.

I hereby certify that the information above is true and complete to the best of my knowledge and belief.

Signed R.D. Pite Title AREA PROD MGR Date 6-25-85
(This space for State Use)

APPROVED BY ORIGINAL SIGNED BY EDDIE SEAY TITLE OIL & GAS INSPECTOR DATE JUN 26 1985

CONDITIONS OF APPROVAL, IF ANY: This approval is for drilling, only, and is contingent upon the amendment of R-7924 to approve this unorthodox location. Production will not be authorized until this has been done.



ADDITIONS - DELETIONS - CHANGES SPECIFY

NOTE: "Under Required" means at any time the BOP Supervisor can, may, or will require the equipment to be installed during operations.

2000-3000 PSI WORKING PRESSURE BOP HOOK-UP FOR LARGE CASINGS

SPECIFY WORKING PRESSURE

labeled, with control handles to indicate open and closed positions. A pressure reducer and regulator must be provided for operating the Hydril preventer. When required, a second pressure reducer shall be available to limit operating fluid pressures to ram preventers. Gulf Legion No. 38 hydraulic oil, an equivalent or better, is to be used as the fluid to operate the hydraulic equipment.

The choke manifold, the choke flow line, the choke lines and the relief lines are to be supported by metal stands and adequately anchored. The choke flow line, relief lines and choke lines shall be constructed as straight as possible and without sharp bends. Casing and valve access shall be maintained to the choke manifold. All valves are to be selected for operation in the presence of oil, gas, and drilling fluids. The choke flow line valves and valves of the relief lines connected to the drilling spools and all ram type preventers must be equipped with stem extension, universal joints, if needed, and hand wheels which are to extend beyond the edge of the derrick substructure. All other valves shall be equipped with handles.

The blowout preventer assembly shall consist of one blind ram preventer and one pipe ram preventer, both hydraulically operated, a Hydril preventer, valves, chokes and connections, as illustrated. If a tapered drill string is used, a ram preventer shall be provided for each size of drill pipe. Casing and tubing ram to fit the preventers are to be available as needed. The ram preventers may be two singles or a double type. If correct in size, the flanged outlets of the ram preventer may be used for connecting to the 4-inch I.D. choke flow line and to the kill line. The substructure height shall be sufficient to install a rotating blowout preventer.

Minimum operating equipment for the preventers and hydraulically operated valves shall be as follows: (1) multiple pumps, driven by a continuous source of power, capable of fluid changing the total accumulator volume from the nitrogen precharge pressure to its rated pressure within 2 minutes. Also, the pumps are to be connected to the hydraulic operating system which is to be a closed system. (2) accumulators with a precharge of nitrogen of not less than 750 PSI and connected so as to receive the aforementioned fluid charge. With the charging pumps shut down, the pressurized fluid volume stored in the accumulator shall be sufficient to close all the pressure-operated devices simultaneously within 4 seconds after closure. The remaining accumulator pressure shall be not less than 1000 PSI with the and equivalent, it is to be available to operate the above pumps, or there shall be additional pumps operated by separate power and equal in performance capabilities.

RECEIVED

JUL -9 1965

U.S. DEPARTMENT OF JUSTICE