

NEW MEXICO OIL CONSERVATION COMMISSION
WELL LOCATION AND ACREAGE DEDICATION PLAT

Form O-121
Supersedes O-120
Effective 1-1-65

All distances must be from the outer boundaries of the Section

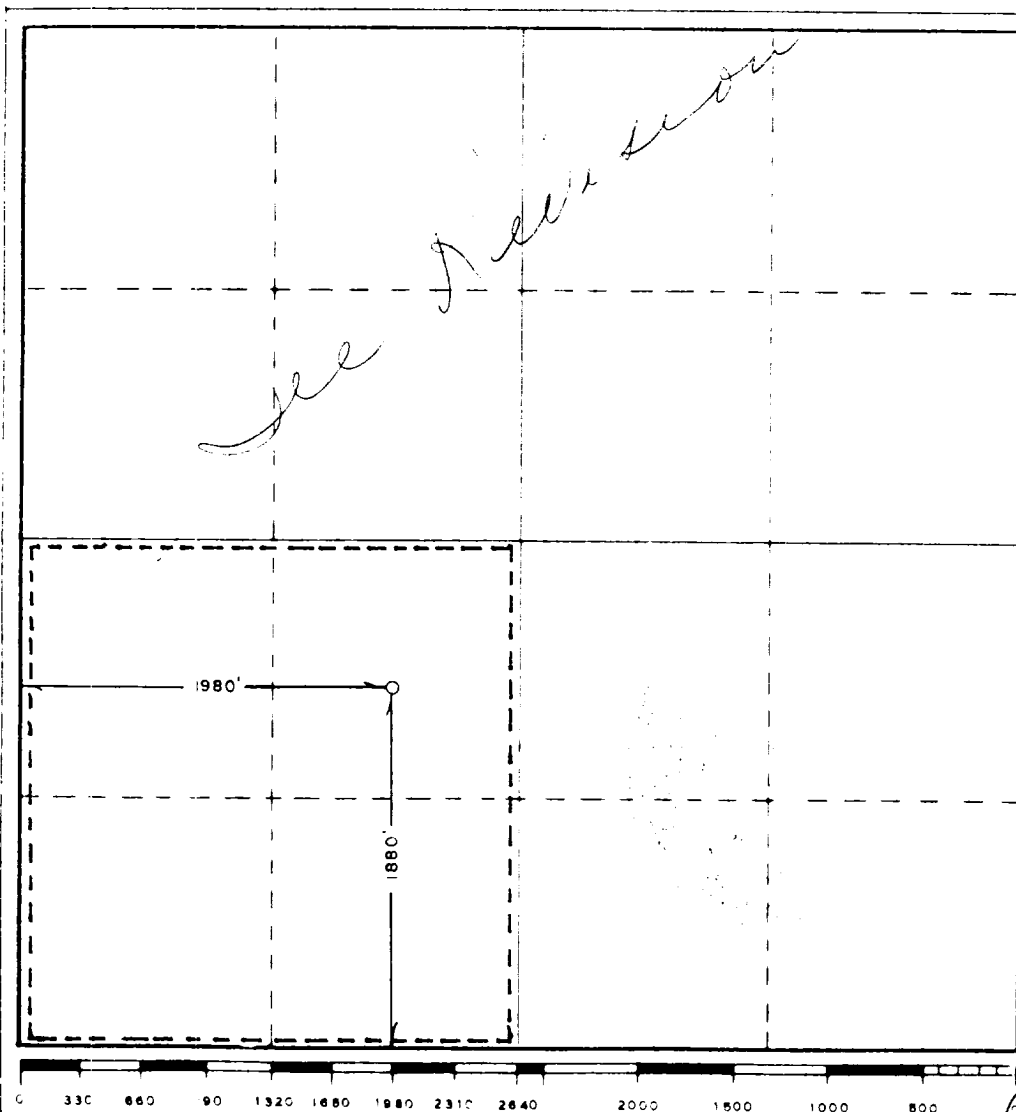
Operator CONOCO INC.		Lease Meyer AL		Well No. 118
Tract Letter R	Section 8	Township 21 SOUTH	Range 50 EAST	County LEA
Actual Surface Location of Well: 1880 feet from the SOUTH line and 1880 feet from the WEST line				
Ground Level Elev. 5552.6	Producing Formation Yates 7 Rvrs Qn	Pool Eumont	Estimated Acreage 160	

1. Outline the acreage dedicated to the subject well by colored pencil or hatchure marks on the plat below.
2. If more than one lease is dedicated to the well, outline each and identify the ownership thereof (both as to working interest and royalty).
3. If more than one lease of different ownership is dedicated to the well, have the interests of all owners been consolidated by communitization, unitization, force-pooling, etc?

☐ Yes ☐ No If answer is "yes," type of consolidation _____

If answer is "no," list the owners and tract descriptions which have actually been consolidated. (Use reverse side of this form if necessary.) _____

No allowable will be assigned to the well until all interests have been consolidated (by communitization, unitization, forced-pooling, or otherwise) or until a non-standard unit, eliminating such interests, has been approved by the Commission.



CERTIFICATION

I hereby certify that the information contained herein is true and complete to the best of my knowledge and belief

Signature
Keith L. Vogel
Title
Administrative Supervisor
Company
Conoco Inc

Date
9/4/85

I hereby certify that the well location shown on this plat was plotted from field notes of actual surveys made by me or under my supervision, and that the same is true and correct to the best of my knowledge and belief

Date Surveyed
JULY 11, 1985

Registered Professional Engineer
and/or Land Surveyor

Signature
John W. West
Certificate No. **JOHN W. WEST, 676**
RONALD J. EIDSON, 3239

RECEIVED

SEP 16 1985

C.C.D.
HOBBS OFFICE