

NO. OF COPIES RECEIVED	
DISTRIBUTION	
SANTA FE	
FILE	
U.S.G.S.	
LAND OFFICE	
OPERATOR	

5A. Indicate Type of Lease
STATE ☒ FEE ☐
5. State Oil & Gas Lease No.
LG-3567

APPLICATION FOR PERMIT TO DRILL, DEEPEN, OR PLUG BACK

1. Type of Work
2. Type of Well DRILL ☒ DEEPEN ☐ PLUG BACK ☐
OIL WELL ☒ GAS WELL ☐ OTHER ☐ SINGLE ZONE ☐ MULTIPLE ZONE ☐

7. Unit Agreement Name
8. Farm or Lease Name
LeMay "ADA" State

3. Name of Operator
Yates Petroleum Corporation
4. Address of Operator
207 South Fourth Street - Artesia, NM 88210

9. Well No.
1

6. Location of Well
UNIT LETTER G LOCATED 1650 FEET FROM THE North LINE
RD 1980 FEET FROM THE East LINE OF SEC. 7 TWP. 21S RGE. 34E NMPM

10. Field and Pool, or Wildcat
Undesignated

11. Elevations (Show whether DF, KT, etc.)
3737' GR

12. County
Lea

19. Proposed Depth 4000'	19A. Formation Seven Rivers	20. Rotary or C.T. Rotary
21A. Kind & Status Plug. Bond Blanket	21B. Drilling Contractor Undesignated	22. Approx. Date Work will start ASAP

PROPOSED CASING AND CEMENT PROGRAM

SIZE OF HOLE	SIZE OF CASING	WEIGHT PER FOOT	SETTING DEPTH	SACKS OF CEMENT	EST. TOP
14-3/4"	10-3/4"	40.5#	Approx. 350'	250 sacks	Circulate
7-7/8"	4 1/2" or 5 1/2"	9.5# or 15.5#	TD	300 sacks	

We propose to drill and test the Seven Rivers and intermediate formations. Approximately 350' of surface casing will be set and cement circulated to shut off gravel and cavings. If commercial, will run production casing and cement with adequate cover, perforate and stimulate as needed for production.

MUD PROGRAM: Native mud to 350', brine and salt water gel to TD.

BOP PROGRAM: BOP's to be installed on the 10-3/4" casing and tested daily for operational

Cement on the Prod casing must be brought from the top of the salt or annularite to the surface casing by either circulating with cement or a DV tool at the top of the salt.

Permit Expires 6 Months From Approval
Date Unless Drilling Underway.

ABOVE SPACE DESCRIBE PROPOSED PROGRAM. IF PROPOSAL IS TO DEEPEN OR PLUG BACK, GIVE DATA ON PRESENT PRODUCTIVE ZONE AND PROPOSED NEW PRODUCTION ZONE. GIVE BLOWOUT PREVENTER PROGRAM, IF ANY.

I hereby certify that the information above is true and complete to the best of my knowledge and belief.

Signed Clifton May Title Regulatory Agent Date Oct. 18, 1985

(This space for State Use)
ORIGINAL SIGNED BY JERRY SEXTON
DISTRICT I SUPERVISOR

OCT 22 1985

APPROVED BY _____ TITLE _____ DATE _____
CONDITIONS OF APPROVAL, IF ANY:

RECEIVED
OCT 21 1985
O.C.D.
HOBBS OFFICE

**MEXICO OIL CONSERVATION COMMISSION
WELL LOCATION AND ACREAGE DEDICATION PLAT**

Form C-102
Supersedes C-128
Effective 1-1-65

All distances must be from the outer boundaries of the Section.

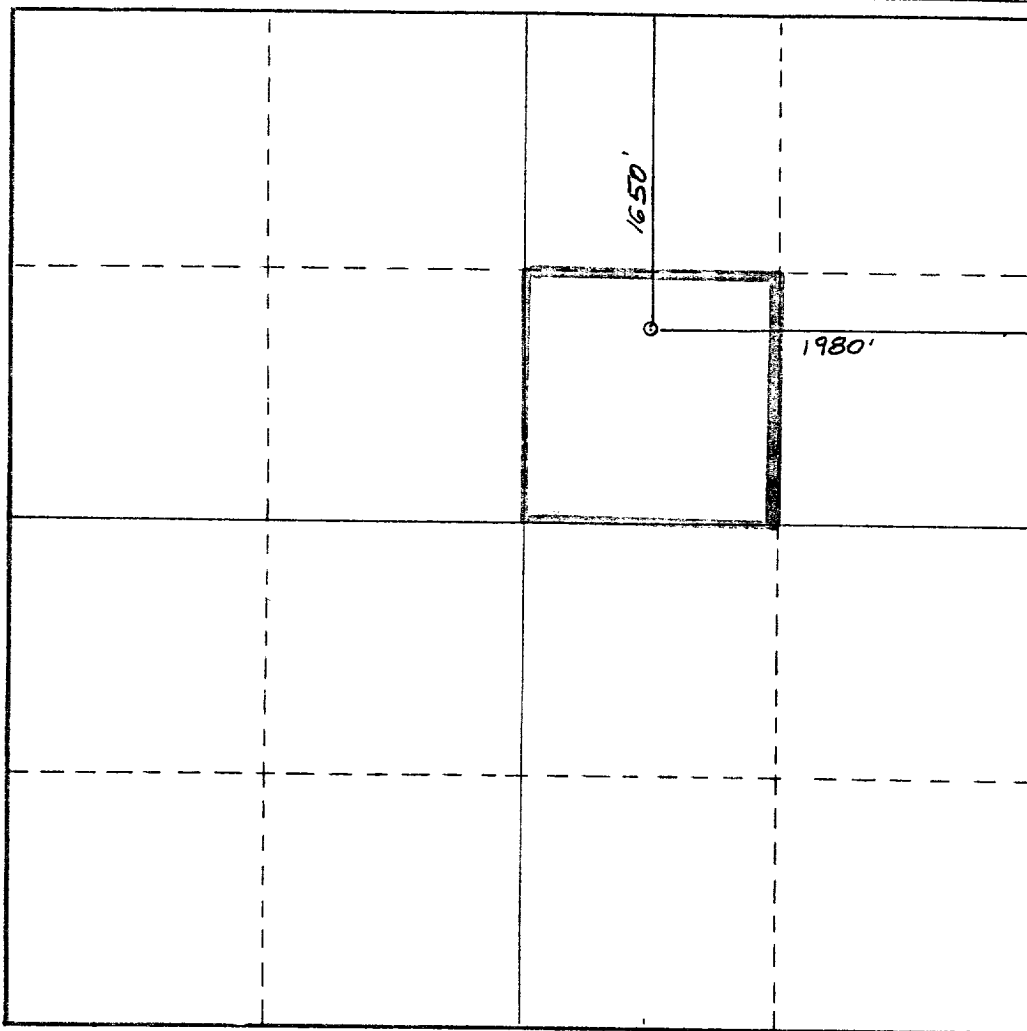
Operator YATES PETROLEUM CORPORATION			Lease LEMAY ADA State		Well No. 1
Unit Letter G	Section 7	Township 21 South	Range 34 East	County Lea	
Actual Footage Location of Well: 1650 feet from the North line and 1980 feet from the East line					
Ground Level Elev. 3737.	Producing Formation SEVEN RIVERS		Pool UNDESIGNATED		Dedicated Acreage: 40 Acres

1. Outline the acreage dedicated to the subject well by colored pencil or hachure marks on the plat below.
2. If more than one lease is dedicated to the well, outline each and identify the ownership thereof (both as to working interest and royalty).
3. If more than one lease of different ownership is dedicated to the well, have the interests of all owners been consolidated by communitization, unitization, force-pooling, etc?

☐ Yes ☐ No If answer is "yes," type of consolidation _____

If answer is "no," list the owners and tract descriptions which have actually been consolidated. (Use reverse side of this form if necessary.) _____

No allowable will be assigned to the well until all interests have been consolidated (by communitization, unitization, forced-pooling, or otherwise) or until a non-standard unit, eliminating such interests, has been approved by the Commission.



CERTIFICATION

I hereby certify that the information contained herein is true and complete to the best of my knowledge and belief.

Clifton May

Name

Clifton May

Position

Regulatory Agent

Company

Yates Petroleum Corporation

Date

October 18, 1985



Date Surveyed

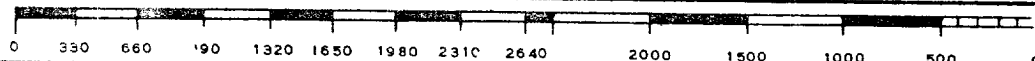
October 15, 1985

Registered Professional Engineer
and/or Land Surveyor

Danner R. Reddy

Certificate No.

NM PE&LS NO. 5412

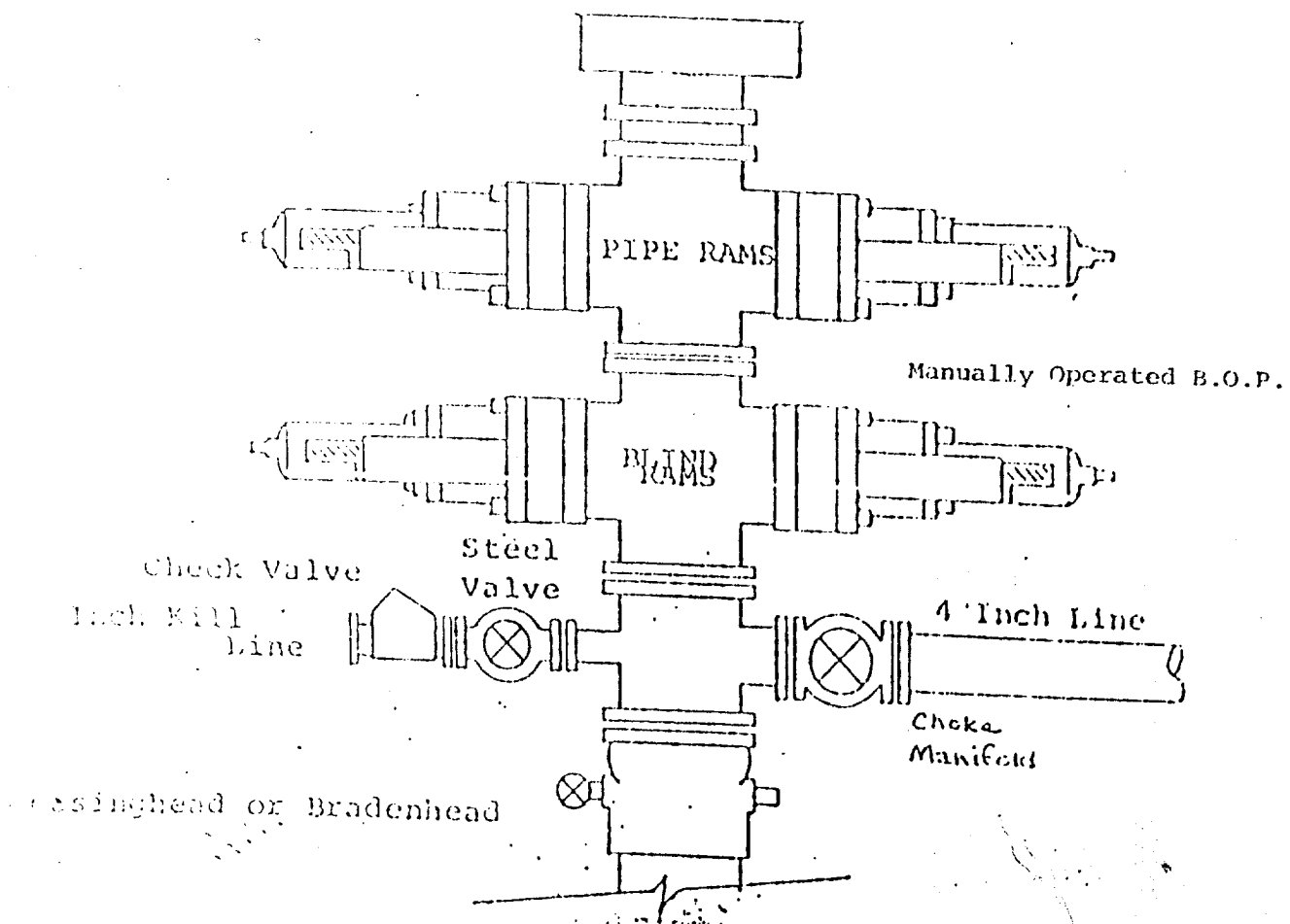


RECEIVED
OCT 21 1985
O.C.D.
HOBBS OFFICE

EXHIBIT B

BDP DIAGRAM

RATED 3000[#]



RECEIVED
OCT 21 1985
O.C.D.
HOBBBS OFFICE

ELF