

N MEXICO OIL CONSERVATION COMMISS
WELL LOCATION AND ACREAGE DEDICATION PLAT

Form C-102
 Supersedes C-128
 Effective 1-1-65

All distances must be from the outer boundaries of the Section

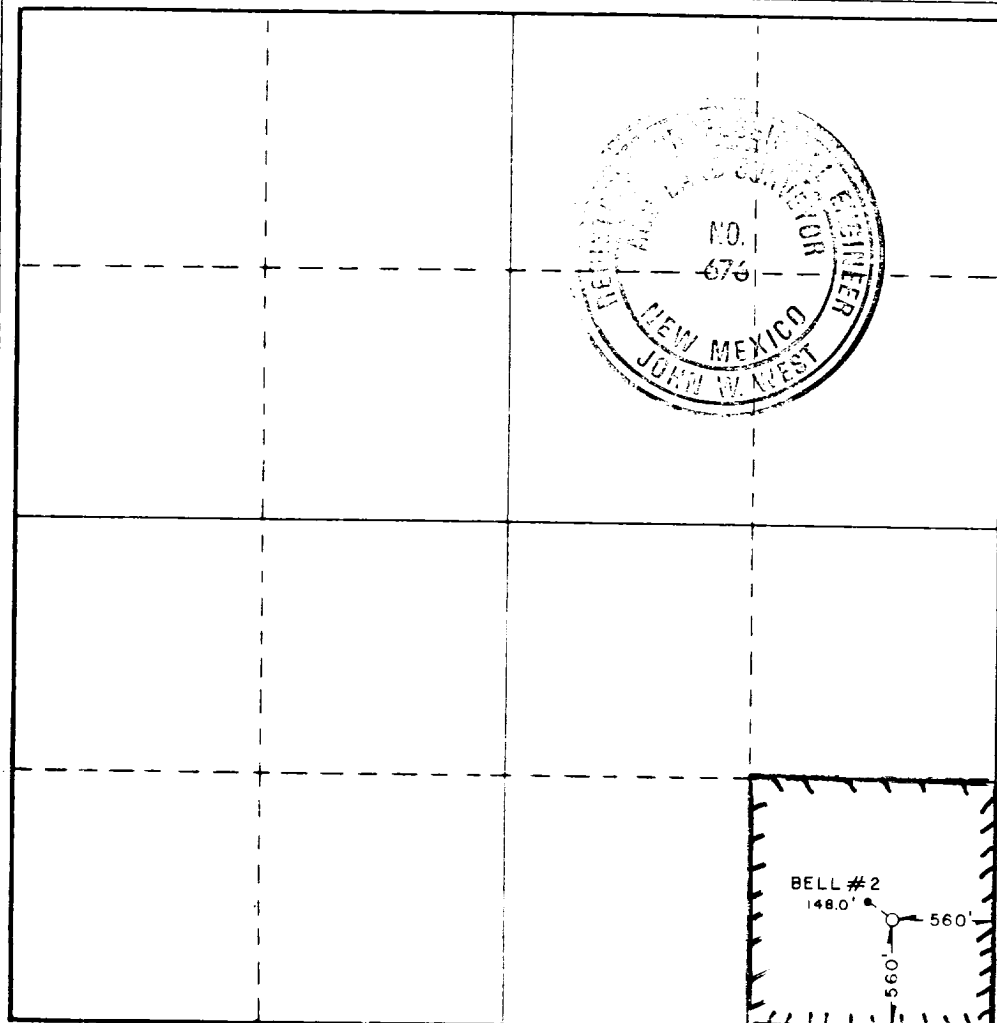
Operator CHEVRON U.S.A., INC.			Lease EMSU		Well No. 338
Unit Letter P	Section 8	Township 21 SOUTH	Range 36 EAST	County LEA	
Actual Footage Location of Well: <div style="display: flex; justify-content: space-between;"> 560 feet from the SOUTH line and 560 feet from the EAST line </div>					
Ground Level Elev. 3598.2'	Producing Formation Grayburg		Pool Eunice Monument		Dedicated Acreage: 40 Acres

1. Outline the acreage dedicated to the subject well by colored pencil or hatchure marks on the plat below.
2. If more than one lease is dedicated to the well, outline each and identify the ownership thereof (both as to working interest and royalty).
3. If more than one lease of different ownership is dedicated to the well, have the interests of all owners been consolidated by communitization, unitization, force-pooling, etc?

☐ Yes ☐ No If answer is "yes," type of consolidation _____

If answer is "no," list the owners and tract descriptions which have actually been consolidated. (Use reverse side of this form if necessary.) _____

No allowable will be assigned to the well until all interests have been consolidated (by communitization, unitization, forced-pooling, or otherwise) or until a non-standard unit, eliminating such interests, has been approved by the Commission.



CERTIFICATION

I hereby certify that the information contained herein is true and complete to the best of my knowledge and belief.

Signature: *P. H. Bullock Jr.*

Position: **Division Drilling Manager**

Company: **Chevron U.S.A. Inc.**

Date: **1-29-1986**

I hereby certify that the well location shown on this plat was plotted from field notes of actual surveys made by me or under my supervision, and that the same is true and correct to the best of my knowledge and belief.

Date Surveyed: **JANUARY 8, 1986**

Registered Professional Engineer and or Land Surveyor

Signature: *John W. West*

Certificate No. **JOHN W. WEST, 676**
RONALD J. EIDSON, 3239

98-51-57001
FBI
JAN 30 1986

RECEIVED
JAN 30 1986
FBI
HOLDS OFFICE