

NO. OF COPIES RECEIVED	
DISTRIBUTION	
SANTA FE	
FILE	
U.S.G.S.	
LAND OFFICE	
OPERATOR	

# NEW MEXICO OIL CONSERVATION COMMISSION

Form C-101  
Revised 1-1-65

5A. Indicate Type of Lease	
STATE <input type="checkbox"/>	FEE <input checked="" type="checkbox"/>

5. State Oil & Gas Lease No.

## APPLICATION FOR PERMIT TO DRILL, DEEPEN, OR PLUG BACK

1a. Type of Work		Eunice Monument South Unit	
b. Type of Well DRILL <input checked="" type="checkbox"/> DEEPEN <input type="checkbox"/> PLUG BACK <input type="checkbox"/> OIL WELL <input type="checkbox"/> GAS WELL <input type="checkbox"/> OTHER Water Supply <input type="checkbox"/> SINGLE ZONE <input checked="" type="checkbox"/> MULTIPLE ZONE <input type="checkbox"/>		8. Firm or Lease Name	
2. Name of Operator Chevron U.S.A. Inc.		9. Well No. 460	
3. Address of Operator P.O. Box 670 Hobbs, NM 88240		10. Field and Pool or Subunit Eunice Monument South Unit GB-8A	
4. Location of Well UNIT LETTER C      LOCATED 1220      FEET FROM THE North      LINE AND 1520      FEET FROM THE West      LINE OF SEC. 8      TWP. 21S      RGE. 36E      NMPM		11. County Lea	
17. Proposed Depth 5000		19A. Formation San Andres	
21. Elevations (show whether DF, RL, etc.) 3586.7		21A. Kind & Status Plug. Bond Blanket	
21B. Drilling Contractor Unknown		22. Approx. Date Work will start ASAP	

## PROPOSED CASING AND CEMENT PROGRAM

SIZE OF HOLE	SIZE OF CASING	WEIGHT PER FOOT	SETTING DEPTH	SACKS OF CEMENT	EST. TOP
20"	16	65	400	500	Circ
14 3/4"	11 3/4	47	2800	1000	Circ
10 5/8"	8 5/8	32	5000	700	2600

Mud Program: 0- 400 FW Spud 32-36 vis 8 ph  
 400-2800 Brine Water 10.0-10.2 ppg 29-31 vis 9ph  
 2800-5000 FW Gel 8.4-8.6 ppg 28-32 vis 9 ph

See attached BOP drawings: Diverter system to be used from 400-2800. Class Three  
 Preventer to be used from 2800-TD.

The Eunice Monument South Unit #284, located in the same quarter-quarter section, is  
 operated by Chevron U.S.A. Inc. and produces from the Eunice Monument.

Permit Expires 6 Months From Approval  
 Date Unless Drilling Underway.

IN ABOVE SPACE DESCRIBE PROPOSED PROGRAM: IF PROPOSAL IS TO DEEPEN OR PLUG BACK, GIVE DATA ON PRESENT PRODUCTIVE ZONE AND PROPOSED NEW PRODUCTIVE ZONE. GIVE BLOWOUT PREVENTER PROGRAM, IF ANY.

I hereby certify that the information above is true and complete to the best of my knowledge and belief.

Signed D. H. Bullock Jr. Title Division Drilling Manager Date 2-5-1986

(This space for State Use)

ORIGINAL SIGNED BY JERRY SEXTON

APPROVED BY DISTRICT SUPERVISOR TITLE \_\_\_\_\_

CONDITIONS OF APPROVAL, IF ANY:

DATE

FEB 10 1986

RECEIVED  
FEB - 6 1936  
C. J. H.  
HOBBS OFFICE

NEW MEXICO OIL CONSERVATION COMMISSION  
WELL LOCATION AND ACREAGE DEDICATION PLAT

Form C-102  
Supersedes C-128  
Effective 1-1-65

All distances must be from the outer boundaries of the Section

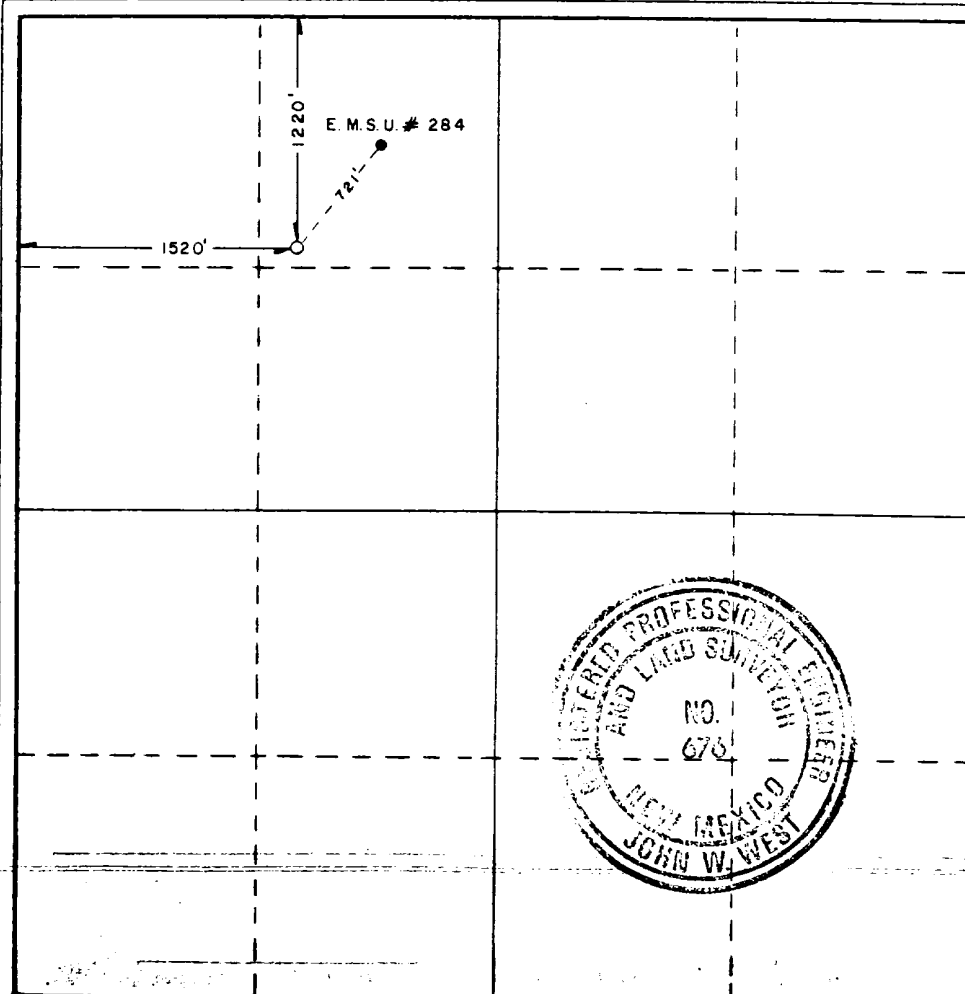
Operator CHEVRON U.S.A., INC.			Lease E.M.S.U.		Well No. 460
Unit Letter C	Section 8	Township 21 SOUTH	Range 36 EAST	County LEA	
Actual Footage Location of Well: 1220 feet from the NORTH line and 1520 feet from the WEST line					
Ground Level Elev. 3586.7'	Producing Formation San Andres		Pool Eunice Monument San Andres	Dedicated Acreage: NA Acres	

- Outline the acreage dedicated to the subject well by colored pencil or hachure marks on the plat below.
- If more than one lease is dedicated to the well, outline each and identify the ownership thereof (both as to working interest and royalty).
- If more than one lease of different ownership is dedicated to the well, have the interests of all owners been consolidated by communitization, unitization, force-pooling, etc?

☐ Yes ☐ No If answer is "yes," type of consolidation \_\_\_\_\_

If answer is "no," list the owners and tract descriptions which have actually been consolidated. (Use reverse side of this form if necessary.) \_\_\_\_\_

No allowable will be assigned to the well until all interests have been consolidated (by communitization, unitization, forced-pooling, or otherwise) or until a non-standard unit, eliminating such interests, has been approved by the Commission.



CERTIFICATION

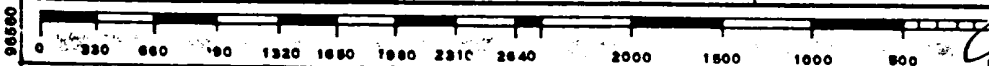
I hereby certify that the information contained herein is true and complete to the best of my knowledge and belief.

Name  
*P.H. Bunting Jr.*  
Position  
Division Drilling Manager  
Company  
Chevron U.S.A. Inc.  
Date  
1-24-1986

I hereby certify that the well location shown on this plat was plotted from field notes of actual surveys made by me or under my supervision, and that the same is true and correct to the best of my knowledge and belief.

Date Surveyed  
JANUARY 6, 1986  
Registered Professional Engineer and/or Land Surveyor

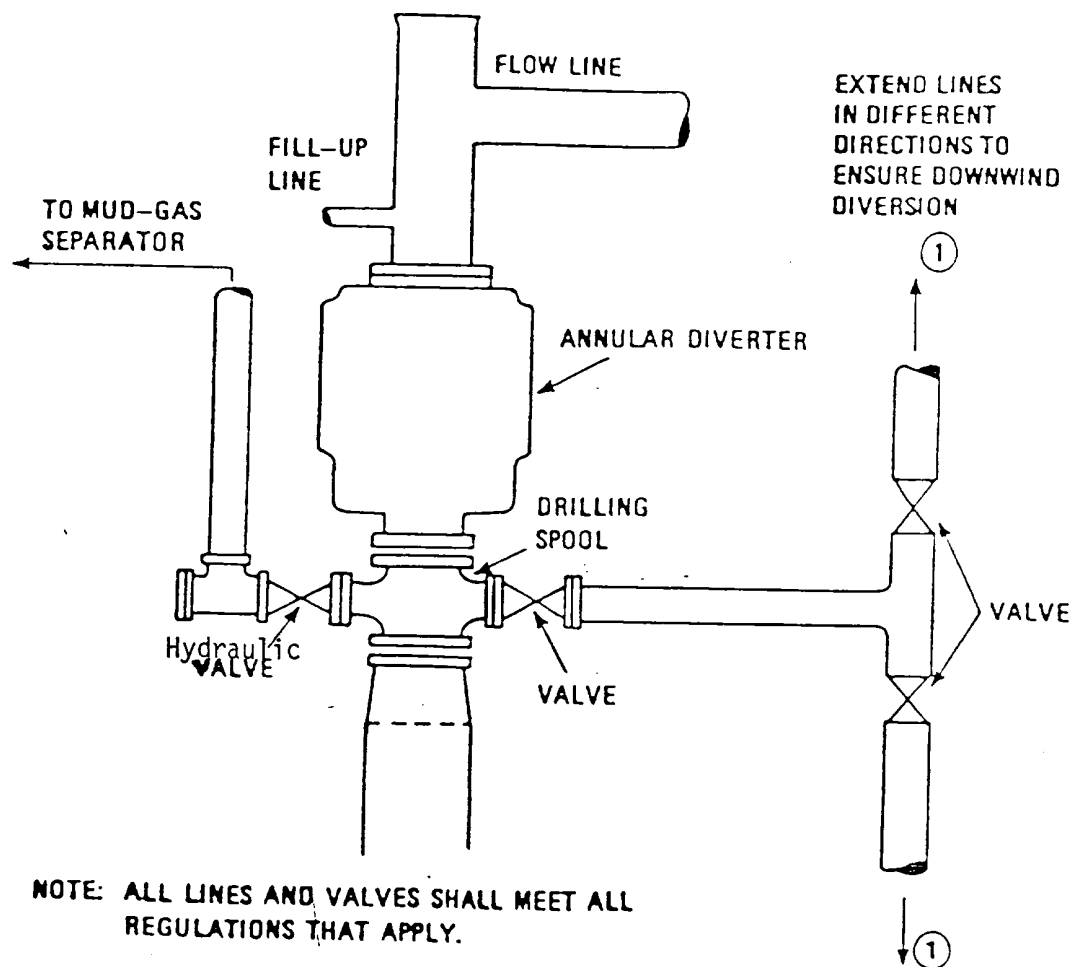
*John W. West*  
Certificate No. JOHN W. WEST, 676  
RONALD J. EIDSON, 3239



CLASS THREE PREVENTER

[illegible]

FIGURE 1  
DIVERTER-PREVENTER HOOKUP



When Annular Diverter closes, the hydraulic valve opens simultaneously  
Do not shut down the pumps.

RECEIVED  
FEB -11 1986  
HOBBS OFFICE

RECEIVED  
FEB 11 1986  
HOBBS OFFICE