

30-025-29621

NO. OF COPIES RECEIVED	
DISTRIBUTION	
SANTA FE	
FILE	
U.S.G.S.	
LAND OFFICE	
OPERATOR	

NEW MEXICO OIL CONSERVATION COMMISSION

Form C-101
Revised 1-1-65

5A. Indicate Type of Lease
STATE <input type="checkbox"/> FEE <input checked="" type="checkbox"/>
6. State Oil & Gas Lease No.

APPLICATION FOR PERMIT TO DRILL, DEEPEN, OR PLUG BACK

1a. Type of Work		DRILL <input checked="" type="checkbox"/> DEEPEN <input type="checkbox"/> PLUG BACK <input type="checkbox"/>	
b. Type of Well		OIL WELL <input type="checkbox"/> GAS WELL <input type="checkbox"/> OTHER Water Supply <input checked="" type="checkbox"/> SINGLE ZONE <input checked="" type="checkbox"/> MULTIPLE ZONE <input type="checkbox"/>	
2. Name of Operator		Chevron U.S.A. Inc.	
3. Address of Operator		P.O. Box 670 Hobbs, NM 88240	
4. Location of Well		UNIT LETTER I LOCATED 1540 FEET FROM THE South LINE AND 1305 FEET FROM THE East LINE OF SEC. 9 TWP. 21S RGE. 36E NMPM	
5. Field and Pool or Wildcat		Eunice Monument South Unit	
6. Field or Lease Name		Eunice Monument South Unit	
7. Well No.		461	
8. County		Lea	
9. Proposed Depth		5000	
10A. Formation		San Andres	
11. Rotary or C.T.		Rotary	
12. Elevations (show whether DF, RT, etc.)		3583.6 GL	
13A. Kind & Status Plug, Bond		Blanket	
14B. Drilling Contractor		Unknown	
15. Approx. Date Work will start		ASAP	

PROPOSED CASING AND CEMENT PROGRAM

SIZE OF HOLE	SIZE OF CASING	WEIGHT PER FOOT	SETTING DEPTH	SACKS OF CEMENT	EST. TOP
20"	16	65	400	500	Circ
14 3/4"	11 3/4	47	2800	1000	Circ
10 5/8"	8 5/8	32	5000	700	2600

Mud Program: 0- 400 FW Spud 32-36 vis 8 ph
400-2800 Brine Water 10.0-10.2 ppg 29-31 vis 9ph
2800-5000 FW Gel 8.4-8.6 ppg 28-32 vis 9 ph

See attached BOP drawings: Diverter system to be used from 400-2800. Class Three Preventer to be used from 2800-TD.

The Eunice Monument South Unit #319, located in the same quarter-quarter section, is operated by Chevron U.S.A. Inc. and produces from the Eunice Monument.

Permit Expires 6 Months From Approval
Date Unless Drilling Underway.

IN ABOVE SPACE DESCRIBE PROPOSED PROGRAM: IF PROPOSAL IS TO DEEPEN OR PLUG BACK, GIVE DATA ON PRESENT PRODUCTIVE ZONE AND PROPOSED NEW PRODUCTIVE ZONE. GIVE BLOWOUT PREVENTER PROGRAM, IF ANY.

I hereby certify that the information above is true and complete to the best of my knowledge and belief.

Signed P. H. Bullock Jr. Title Division Drilling Manager Date 2-5-1986

(This space for State Use)
ORIGINAL SIGNED BY JERRY SEXTON
DISTRICT 1 SUPERVISOR

APPROVED BY _____ TITLE _____ DATE FEB 10 1986

CONDITIONS OF APPROVAL, IF ANY:

RECEIVED

FEB - 6 1986

CO. 10
HOBBS OFFICE

N MEXICO OIL CONSERVATION COMMISS
WELL LOCATION AND ACREAGE DEDICATION PLAT

Form C-102
Supersedes C-128
Effective 1-1-65

All distances must be from the outer boundaries of the Section.

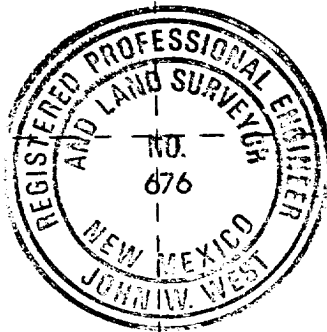
Operator CHEVRON U.S.A., INC.		Lease EMSU		Well No. 461
Unit Letter I	Section 9	Township 21 SOUTH	Range 36 EAST	County LEA
Actual Footage Location of Well: 1540 feet from the SOUTH line and 1305 feet from the EAST line				
Ground Level Elev. 3583.6'	Producing Formation San Andres	Pool Eunice Monument San Andres	Dedicated Acreage: NA Acres	

1. Outline the acreage dedicated to the subject well by colored pencil or hachure marks on the plat below.
2. If more than one lease is dedicated to the well, outline each and identify the ownership thereof (both as to working interest and royalty).
3. If more than one lease of different ownership is dedicated to the well, have the interests of all owners been consolidated by communitization, unitization, force-pooling, etc?

☐ Yes ☐ No If answer is "yes," type of consolidation _____

If answer is "no," list the owners and tract descriptions which have actually been consolidated. (Use reverse side of this form if necessary.) _____

No allowable will be assigned to the well until all interests have been consolidated (by communitization, unitization, forced-pooling, or otherwise) or until a non-standard unit, eliminating such interests, has been approved by the Commission.



CERTIFICATION

I hereby certify that the information contained herein is true and complete to the best of my knowledge and belief.

Name
P. H. Bullock Jr.

Position
Division Drilling Manager

Company
Chevron U.S.A. Inc.

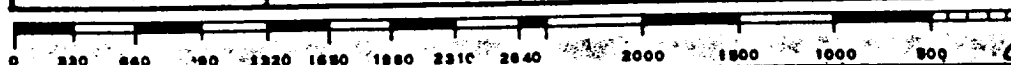
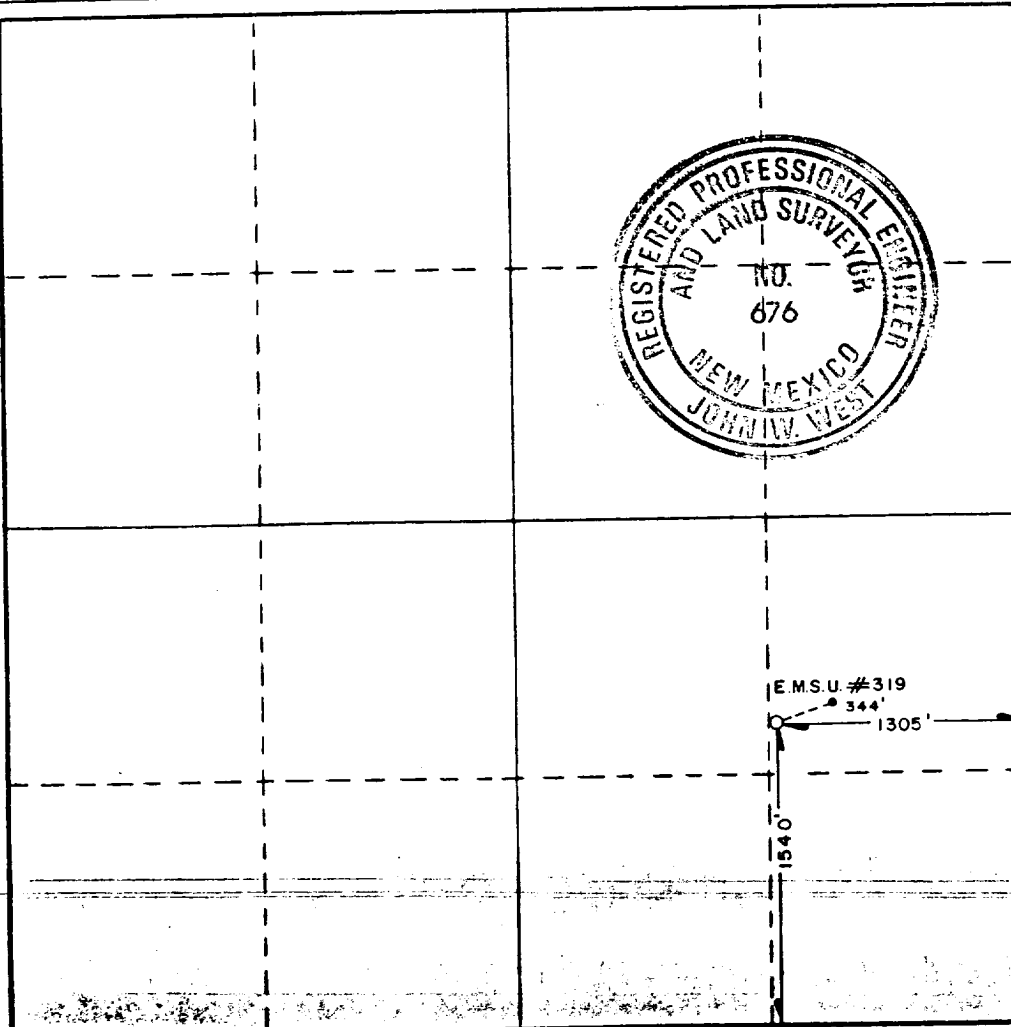
Date
2-5-1986

I hereby certify that the well location shown on this plat was plotted from field notes of actual surveys made by me or under my supervision, and that the same is true and correct to the best of my knowledge and belief.

Date Surveyed
JANUARY 8, 1986

Registered Professional Engineer and/or Land Surveyor

John W. West
Certificate No. JOHN W. WEST, 676
RONALD J. EIDSON, 3239



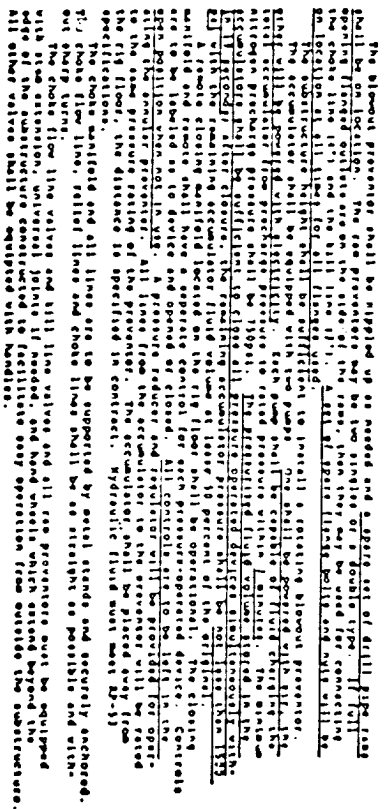
RECEIVED

FEB - 6 1986

200
HOBBS OFFICE

HOBBS DIVISION

CLASS THREE PREVENTER

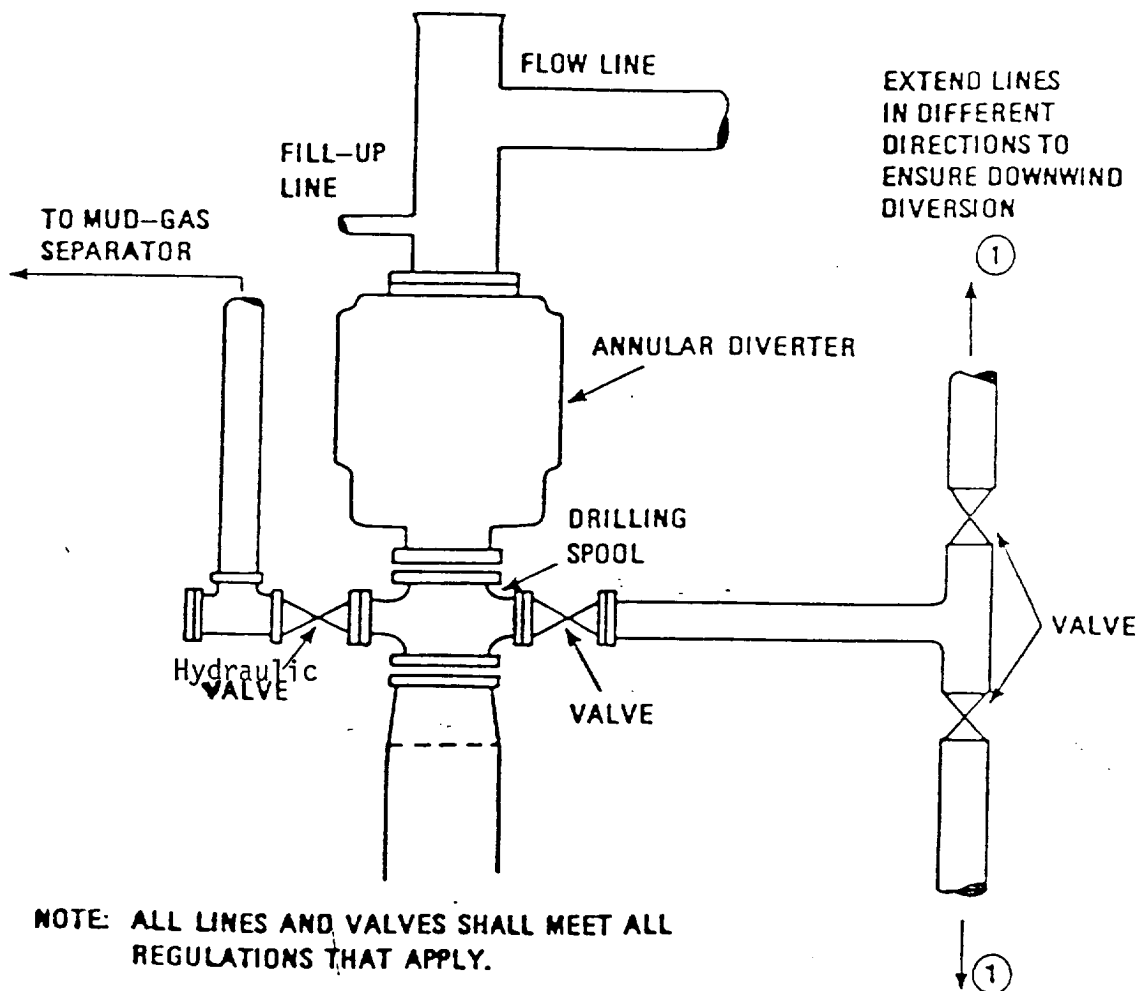


RECEIVED

FEB - 6 1986

OFFICE
HOBBS OFFICE

FIGURE 1
DIVERTER-PREVENTER HOOKUP



NOTE: ALL LINES AND VALVES SHALL MEET ALL REGULATIONS THAT APPLY.

When Annular Diverter closes, the hydraulic valve opens simultaneously
Do not shut down the pumps.

RECEIVED
FEB - 6 1986
O.C.D.
HOBBS OFFICE

173
Mack 6-10-86
12-27-87