

30-025-29732

| | |
|------------------------|--|
| NO. OF COPIES RECEIVED | |
| DISTRIBUTION | |
| SANTA FE | |
| FILE | |
| U.S.G.S. | |
| LAND OFFICE | |
| OPERATOR | |

5A. Indicate Type of Lease
STATE ☐ FEE ☒
5. State Oil & Gas Lease No.

APPLICATION FOR PERMIT TO DRILL, DEEPEN, OR PLUG BACK

a. Type of Work
b. Type of Well DRILL ☒ DEEPEN ☐ PLUG BACK ☐
OIL WELL ☒ GAS WELL ☐ OTHER ☐ SINGLE ZONE ☒ MULTIPLE ZONE ☐
2. Name of Operator
Sun Exploration & Production Company
3. Address of Operator
P.O. Box 1861, Midland, Texas 79702
4. Location of Well
UNIT LETTER Q LOCATED 2310 FEET FROM THE South LINE
AND 330 FEET FROM THE East LINE OF SEC. 3 TWP. 21 RGE. 36 NMPM
19. Proposed Depth 7100
19A. Formation Drinkard
20. Rotary or C.T. Rotary
21. Elevations (Show whether DF, RT, etc.) 3530.9' GR
21A. Kind & Status Plug: Bond Blanket on file
21B. Drilling Contractor N/A
22. Approx. Date Work will start ASAP

PROPOSED CASING AND CEMENT PROGRAM

| SIZE OF HOLE | SIZE OF CASING | WEIGHT PER FOOT | SETTING DEPTH | SACKS OF CEMENT | EST. TOP |
|--------------|----------------|-----------------|---------------|-----------------|----------|
| 17 1/2 | 13-3/8 | 48 | 400 | 475 sks | Surf. |
| 11 | 8-5/8 | 24 | 2700 | 1200 sks | Surf. |
| 7-7/8 | 5-1/2 | 14 & 15.5 | 6950 | 975 sks | 2500 |

Reservoir

Glorieta 5192 (-1642)
Blinberry 5802 (-2252)
Drinkard 6552 (-3002)

Formation

Yates 2624 (+926)
Seven Rivers 2880 (+670)
Grayburg 3625 (-75)

J.A. Akens #6 & #9 located on this
40-acre tract both belong to Sun

Permit Expires 15 Months From Approval
Date Unless Drilling Underway.

IN ABOVE SPACE DESCRIBE PROPOSED PROGRAM: IF PROPOSAL IS TO DEEPEN OR PLUG BACK, GIVE DATA ON PRESENT PRODUCTIVE ZONE AND PROPOSED NEW PRODUCTIVE ZONE. GIVE BLOWOUT PREVENTER PROGRAM, IF ANY.

I hereby certify that the information above is true and complete to the best of my knowledge and belief.

Signed D. Ann Kemp Title Associate Accountant Date 8/5/86

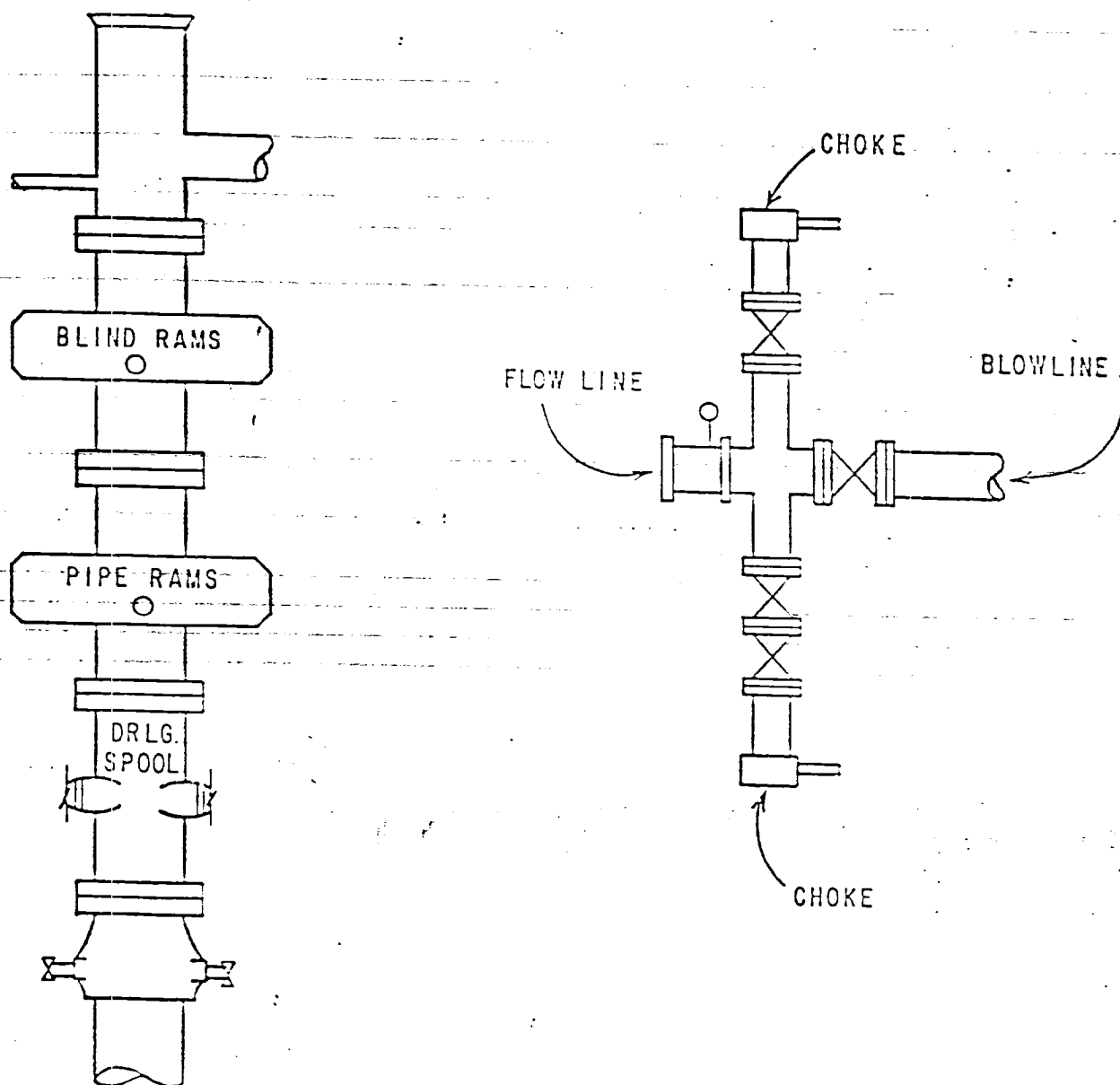
(This space for State Use)
ORIGINAL SIGNED BY JERRY SEXTON
DISTRICT I SUPERVISOR

APPROVED BY _____ TITLE _____ DATE AUG 11 1986

CONDITIONS OF APPROVAL, IF ANY:

RECEIVED
AUG 11 1986
O.C.S.
HOBBS OFFICE

BLOWOUT - PREVENTER ASSEMBLY



NEW MEXICO OIL CONSERVATION COMMISSION
WELL LOCATION AND ACREAGE DEDICATION PLAT

Form C-102
Supersedes C-128
Effective 1-1-65

All distances must be from the outer boundaries of the Section

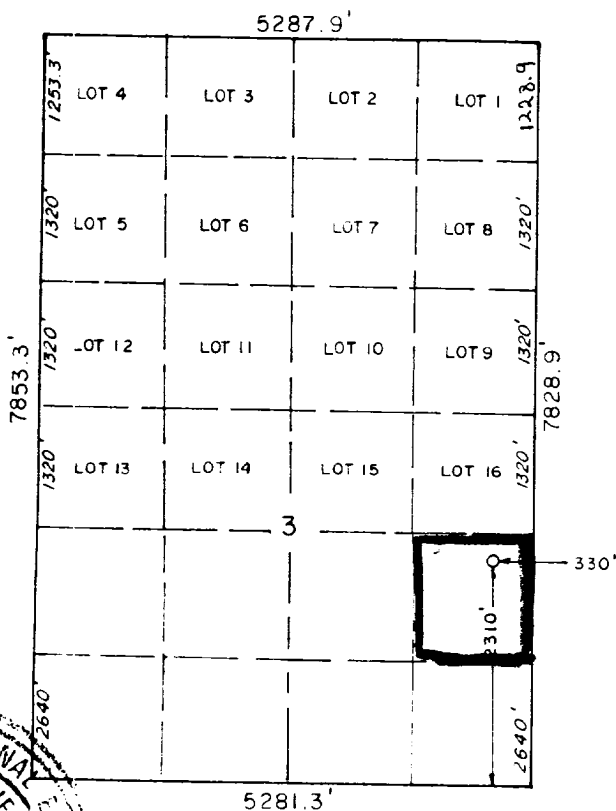
| | | | | | |
|---|--|-----------------------------|-------------------------------|----------------------|---------------------------------------|
| Operator Sun Exploration & Production Co. | | | Lease J. A. Akens | | Well No. 13 |
| Unit Letter Q | Section 3 | Township 21 South | Range 36 East | County Lea | |
| Actual Footage Location of Well: 2310 feet from the South line and 330 feet from the East line | | | | | |
| Ground Level Elev. 3530.9' | Producing Formation Drinkard | | Pool Hardy Drinkard | | Dedicated Acreage: 40 Acres |

1. Outline the acreage dedicated to the subject well by colored pencil or hachure marks on the plat below.
2. If more than one lease is dedicated to the well, outline each and identify the ownership thereof (both as to working interest and royalty).
3. If more than one lease of different ownership is dedicated to the well, have the interests of all owners been consolidated by communitization, unitization, force-pooling, etc?

☐ Yes ☐ No If answer is "yes," type of consolidation _____

If answer is "no," list the owners and tract descriptions which have actually been consolidated. (Use reverse side of this form if necessary.) _____

No allowable will be assigned to the well until all interests have been consolidated (by communitization, unitization, forced-pooling, or otherwise) or until a non-standard unit, eliminating such interests, has been approved by the Commission.



SCALE: 1" = 2000'

CERTIFICATION

I hereby certify that the information contained herein is true and complete to the best of my knowledge and belief.

Dee Ann Kemp
Name
Dee Ann Kemp

Position
Associate Accountant

Company
Sun Exploration and Prod.

Date
Company 8-8-86

I hereby certify that the well location shown on this plat was plotted from field notes of actual surveys made by me or under my supervision, and that the same is true and correct to the best of my knowledge and belief.

Date Surveyed
AUGUST 6, 1986

Registered Professional Engineer and/or Land Surveyor

John W. West
Certificate No. **JOHN W. WEST 676**

Ronald J. Fiddon 3239