

Submit to Appropriate  
District Office  
State Lease - 4 copies  
Fee Lease - 3 copies

State of New Mexico  
Energy, Minerals and Natural Resources Department

Form C-102  
Revised 1-1-89

OIL CONSERVATION DIVISION

P.O. Box 2088  
Santa Fe, New Mexico 87504-2088

DISTRICT I  
P.O. Box 1980, Hobbs, NM 88240

DISTRICT II  
P.O. Drawer DD, Artesia, NM 88210

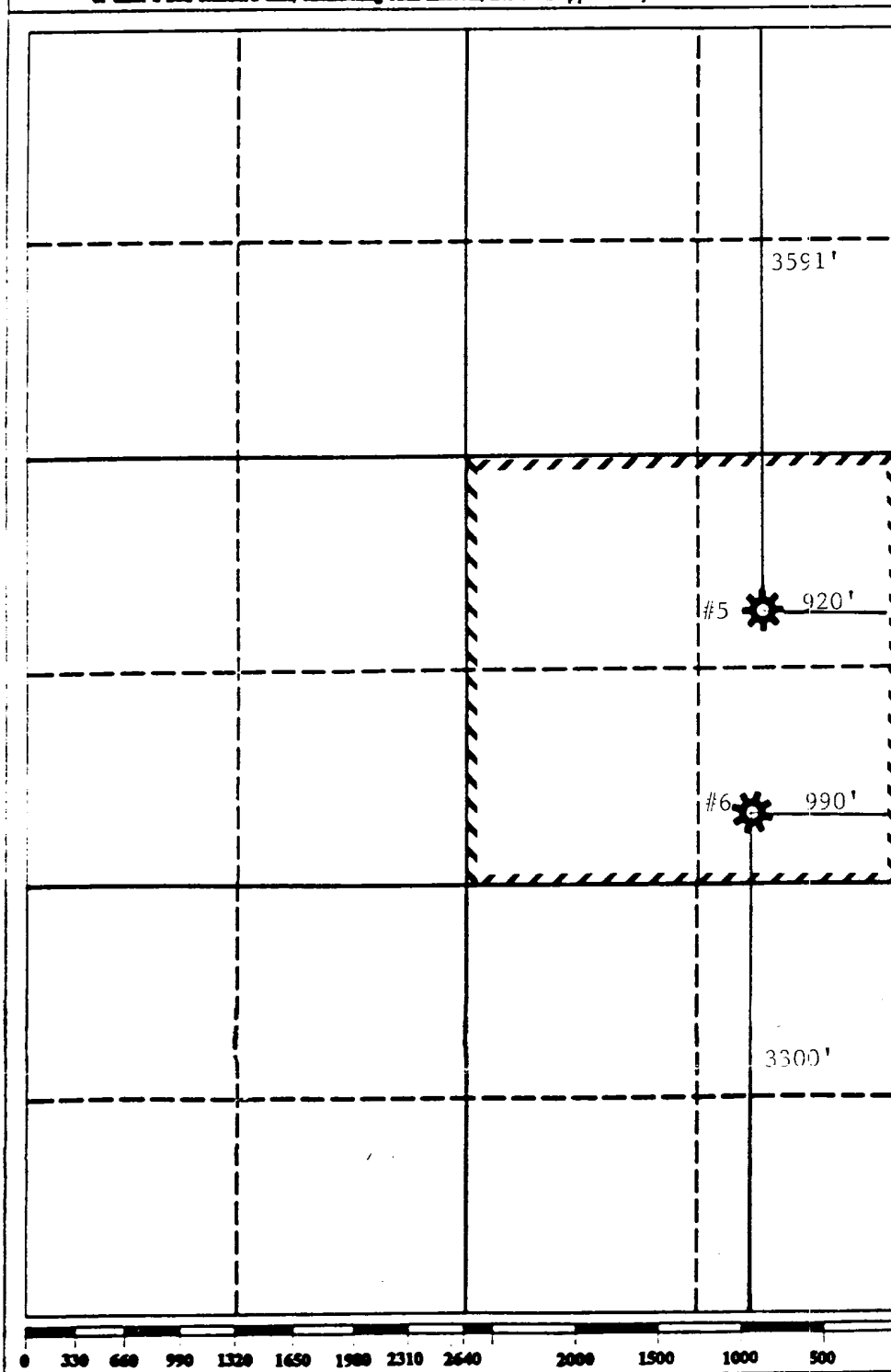
DISTRICT III  
1000 Rio Brazos Rd., Aztec, NM 87410

WELL LOCATION AND ACREAGE DEDICATION PLAT

All Distances must be from the outer boundaries of the section

Operator ARCO OIL AND GAS COMPANY			Lease STATE "H"		Well No. #5
Unit Letter I	Section 5	Township 21-S	Range 36-E	County NMPM	LEA
Actual Footage Location of Well:					
3591 feet from the NORTH line and		920 feet from the EAST line			
Ground level Elev. 3571'	Producing Formation YATES/7-RIVERS/QUEEN		Pool EUMONT	Dedicated Acreage: 160 Acres	

- Outline the acreage dedicated to the subject well by colored pencil or hatchure marks on the plat below.
- If more than one lease is dedicated to the well, outline each and identify the ownership thereof (both as to working interest and royalty).
- If more than one lease of different ownership is dedicated to the well, have the interest of all owners been consolidated by communitization, unitization, force-pooling, etc.?  
☐ Yes ☐ No If answer is "yes" type of consolidation \_\_\_\_\_  
If answer is "no" list the owners and tract descriptions which have actually been consolidated. (Use reverse side of this form if necessary.) \_\_\_\_\_  
No allowable will be assigned to the well until all interests have been consolidated (by communitization, unitization, forced-pooling, or otherwise) or until a non-standard unit, eliminating such interest, has been approved by the Division.



OPERATOR CERTIFICATION

I hereby certify that the information contained herein is true and complete to the best of my knowledge and belief.

Signature

Evelyn E. Gilson

Printed Name

EVELYN E. GILSON

Position

ENGINEERING TECHNICIAN

Company

ARCO OIL AND GAS COMPANY

Date

AUGUST 31, 1993

SURVEYOR CERTIFICATION

I hereby certify that the well location shown on this plat was plotted from field notes of actual surveys made by me or under my supervision, and that the same is true and correct to the best of my knowledge and belief.

Date Surveyed

Signature & Seal of  
Professional Surveyor

Certificate No.

# IL CONSERVATION DIVISIO

STATE OF NEW MEXICO  
ENERGY AND MINERALS DEPARTMENT

P. O. BOX 2088  
SANTA FE, NEW MEXICO 87501

Form C-102  
Revised 10-1-78

All distances must be from the outer boundaries of the Section.

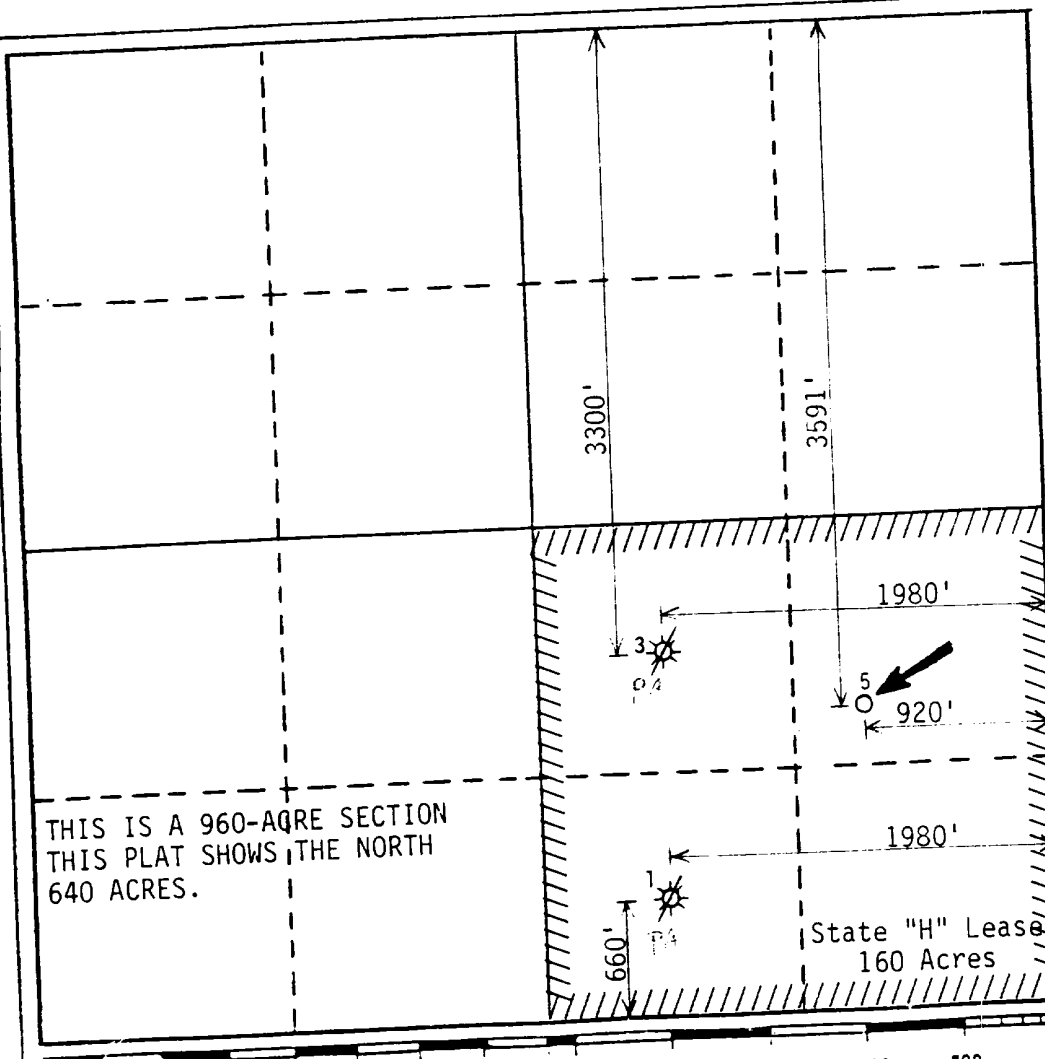
Operator ARCO Oil and Gas Company			Lease State "H"		Well No. 5
Unit Letter I	Section 5	Township 21 South	Range 36 East	County Lea	
Actual Footage Location of Well: 3591 feet from the North line and 920 feet from the East line			Dedicated Acreage: 160 Acres		
Ground Level Elev. 3571.2'	Producing Formation Queen	Pool Eumont Gas			

1. Outline the acreage dedicated to the subject well by colored pencil or hachure marks on the plat below.
2. If more than one lease is dedicated to the well, outline each and identify the ownership thereof (both as to working interest and royalty).
3. If more than one lease of different ownership is dedicated to the well, have the interests of all owners been consolidated by communitization, unitization, force-pooling, etc? NA

☐ Yes ☐ No If answer is "yes," type of consolidation \_\_\_\_\_

If answer is "no," list the owners and tract descriptions which have actually been consolidated. (Use reverse side of this form if necessary.) \_\_\_\_\_

No allowable will be assigned to the well until all interests have been consolidated (by communitization, unitization, forced-pooling, or otherwise) or until a non-standard unit, eliminating such interests, has been approved by the Division.



## CERTIFICATION

I hereby certify that the information contained herein is true and complete to the best of my knowledge and belief.

Name  
Antoinette D. Green

Position  
Engineer

Company  
ARCO Oil and Gas

Date  
August 6, 1986

I hereby certify that the well location shown on this plat was plotted from field notes of actual surveys made by me or under my supervision, and that the same is true and correct to the best of my knowledge and belief.

Date Surveyed \_\_\_\_\_

Registered Professional Engineer and/or Land Surveyor \_\_\_\_\_

Certificate No. \_\_\_\_\_

# WRS COMPLETION REPORT

COMPLETIONS SEC 5 TWP 21S RGE 36E  
PI# 30-T-0008 11/14/86 30-025-29736-0000 PAGE 1

NMEX LEA \* 3591FNL 920FEL SEC NE NE  
STATE COUNTY FOOTAGE SPOT  
ARCO O&G D DG  
OPERATOR WELL CLASS INIT FIN

5 STATE "H"  
WELL NO. LEASE NAME  
3581KB 3571GR EUMONT  
OPER ELEV FIELD POOL AREA

LEASE TYPE NO. PERMIT OR WELL I.D. NO.  
08/28/1986 10/25/1986 ROTARY GAS  
SPUD DATE COMP. DATE TYPE TOOL STATUS

3600 YT-SR-QN V & B DRLG 3 RIG SUB 9  
PROJ. DEPTH PROJ. FORM CONTRACTOR  
DTD 3600 PB 3558 FM/TD QUEEN  
DRILLERS T.D. LOG T.D. PLUG BACK TD OLD T.D. FORM T.D.

## LOCATION DESCRIPTION

IRREG SECTION  
2 MI NW OIL CENTER, NM

## CASING/LINER DATA

CSG 8 5/8 @ 382 W/ 300 SACKS  
CSG 5 1/2 @ 3600 W/ 750 SACKS

## TUBING DATA

TBG 2 3/8 AT 3239

## INITIAL POTENTIAL

IPF 748 MCFD 32/64CK 24HRS  
YT-SR-QN PERF W/ 12/IT 3364- 3453 GROSS  
SGFR 3364- 3453 45000GALS 62500LBS SAND  
ADDTV GEL

TP 60  
FM - QUEEN  
FCP PKR  
NO 4 PT TEST RPTD

TYPE	FORMATION	LTH	TOP DEPTH/SUB	BSE DEPTH/SUB
LOG	YATES		2718	863
LOG	QUEEN		3350	231

CONTINUED IC# 300257023286

Copyrighted  
Reproduction  
Prohibited



Petroleum Information

CORPORATION

PI-WRS-GET  
Form No 187

COMPLETIONS SEC 5 TWP 21S RGE 36E  
PI# 30-T-0008 11/14/86 30-025-29736-0000 PAGE 2

ARCO O&G  
5

STATE "H"

D DG

PRODUCTION TEST DATA

QUEEN PERF W/ 12/IT 3364- 3453 GROSS  
PERF 3364, 3373, 3382, 3390, 3399, 3405, 3410, 3415  
PERF 3430, 3437, 3443, 3453  
ACID 3364- 3453 1500GALS  
15% NEFE HCL  
SWBD 18 BLW IN 5 HRS

QUEEN PERF 3364- 3453 GROSS  
NTFR 3364- 3453 12000GALS 10000LBS SAND  
NTGN FOAM  
FLWD 1 BLW IN 10 HRS THRU 48/64 CK

LOGS AND SURVEYS /INTERVAL,TYPE/

LOGS 2600- 3558 CCL 2600- 3558 CNL 2600- 3558 GR

DRILLING PROGRESS DETAILS

ARCO O&G  
BOX 1610  
MIDLAND, TX 79702  
915-684-0100  
08/19 LOC/1986/  
09/05 3600 TD, WOCT  
09/23 3600 TD, PB 3558, SI  
10/16 3600 TD, PB 3558, SI  
11/11 TD REACHED 09/02/86 RIG REL 09/03/86  
3600 TD, PB 3558  
COMP 10/25/86, IPF 748 MCFGPD, 32/64 CK,  
FTP 60, FCP PKR  
PROD ZONE - YATES-SEVEN RIVERS-QUEEN  
3364-3453  
NO CORES OR DSTS RPTD