

STATE OF NEW MEXICO
ENERGY AND MINERALS DEPARTMENT

OIL CONSERVATION DIVISION
P. O. BOX 2088
SANTA FE, NEW MEXICO 87501

30-025-29702
Form C-101
Revised 10-1-78

NO. OF COPIES RECEIVED	
DISTRIBUTION	
SANTA FE	
FILE	
U.S.G.S.	
LAND OFFICE	
OPERATOR	

5A. Indicate Type of Lease
STATE ☐ FEE ☒
5. State Oil & Gas Lease No.
N/A

APPLICATION FOR PERMIT TO DRILL, DEEPEN, OR PLUG BACK

a. Type of Work
DRILL ☒ DEEPEN ☐ PLUG BACK ☐

b. Type of Well
OIL WELL ☒ GAS WELL ☐ OTHER ☐ SINGLE ZONE ☐ MULTIPLE ZONE ☐

c. Name of Operator
Bravo Energy, Inc.

d. Address of Operator
P.O. Box 2160 - Hobbs, New Mexico 88241-2160

e. Location of Well
UNIT LETTER "J" LOCATED 3535 FEET FROM THE North LINE

f. Location of Well
T. 1980 FEET FROM THE East LINE OF SEC. 1 TWP. 21S RGE. 37E NMPM

7. Unit Agreement Name

8. Farm or Lease Name
Dauron

9. Well No.
2

10. Field and Pool, or Wildcat
Wantz - Abo

12. County
Lea

1. Elevations (Show whether D.F., K.I., etc.) 3545 G.L.	21A. Kind & Status Plug. Bond Blanket	19. Proposed Depth 8000'	19A. Formation Abo	20. Rotary or C.T. Rotary	22. Approx. Date Work will start November 18, 1986
--	--	-----------------------------	-----------------------	------------------------------	---

3. PROPOSED CASING AND CEMENT PROGRAM

SIZE OF HOLE	SIZE OF CASING	WEIGHT PER FOOT	SETTING DEPTH	SACKS OF CEMENT	EST. TOP
12-1/4"	8-5/8"	24#	1600'	800	Circulate
7-7/8"	5-1/2"	15.5 & 17#	8000'	2000	1000'

- Set 40' conductor pipe and cement to surface.
- Drill 12-1/4" hole to 20' into Rustler Anhydrite 1600'±, run 8-5/8" casing with enough cement to circulate.
- Drill 7-7/8" hole, log well, set 5-1/2" casing to T.D., cement with stage tool and complete well.

ABOVE SPACE DESCRIBE PROPOSED PROGRAM; IF PROPOSAL IS TO DEEPEN OR PLUG BACK, GIVE DATA ON PRESENT PRODUCTIVE ZONE AND PROPOSED NEW PRODUCTIVE ZONE. GIVE BLOWOUT PREVENTER PROGRAM, IF ANY.

I hereby certify that the information above is true and complete to the best of my knowledge and belief.

Signed Jerry Sexton Title Agent Date November 10, 1986

(This space for State Use)

ORIGINAL SIGNED BY JERRY SEXTON

APPROVED BY DISTRICT 1 SUPERVISOR TITLE DATE NOV 12 1986

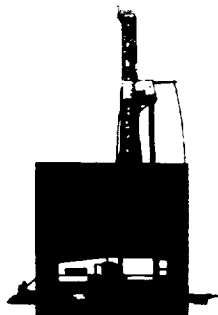
CONDITIONS OF APPROVAL, IF ANY:

Permit Expires 6 Months From Approval Date Unless Drilling Underway.

RECEIVED

NOV 11 1986

O.C.S.
LOCAL OFFICE



RIG 9 6,000' - 11,000'

**MORANCO
DRILLING, INC.**

P.O. Box 1860 • Hobbs, New Mexico 88240 • 505/397-3511 • 915/563-0562

DRAWWORKS

Brewster N-55
Drum: 1 1/8" Lebus grooved
Compound: 2-engine oil bath chain drive
Brake: Hydromatic Parkersburg 40" Single
Satellite Automatic Driller
Duo-O-Matic Crown Block Protector

ENGINES

Two 410-H.P. D353TA Caterpillar Diesel.

DERRICK

Lee C. Moore, 131', 550,000-lb. nominal capacity.

SUBSTRUCTURE

Lee C. Moore, 15' high, 550,000-lb. nominal capacity.

MUD PUMPS

Pump No. 1: Emsco DB700. 700-H.P. with steel fluid end.
4 3/4" - 7 3/4" liners, 16" stroke. Compound driven.
Pump No. 2: D375 Emsco driven by D353 Caterpillar
Diesel.

DRILL STRING

3,000' 4 1/2" Grade E, 20-lb.
Tool Joints: 4 1/2" H-90, 6 1/4" OD.
8,000' 4 1/2" Grade E, 16.60-lb.
Tool Joints: 4 1/2" XH, 6 1/4" OD.
Thirty Drilco spiral-grooved 6 1/2" OD, 2 1/4" ID with 4" H-90
Joints. Other sized drillpipe and drillcollars available.

BLOWOUT PREVENTERS

One Shaffer LWS hydraulic double 11" x 3,000 p.s.i. One
Hydril 11" x 3,000 p.s.i. Annular. Choke manifold
4" x 3,000 p.s.i. flanged connections. Payned 4-valve
accumulator closing unit.

MUD SYSTEM

Three 10' wide steel pits with 660-bbl capacity and one
250-bbl slug pit. Complete low pressure circulating
system, consisting of four submerged mud guns and two
countersunk jets in each pit. System utilizes a 6 x 8
centrifugal pump, powered by diesel.

MUD HOUSE

One 8' x 30' Steel Storage House.

COMMUNICATIONS

24-hour direct telephone interconnection through Hobbs
(505/393-1111) or Midland-Odessa (915/563-0562).

OTHER EQUIPMENT

BLOCKS. 350-ton.

HOOK. 300-ton.

SWIVEL. 200-ton.

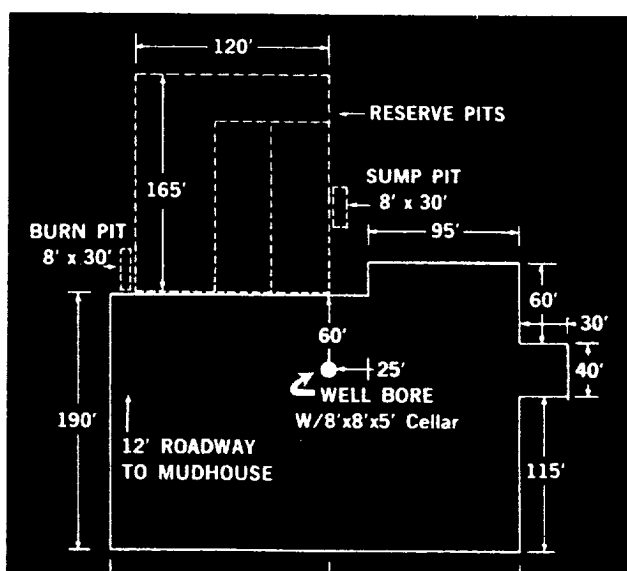
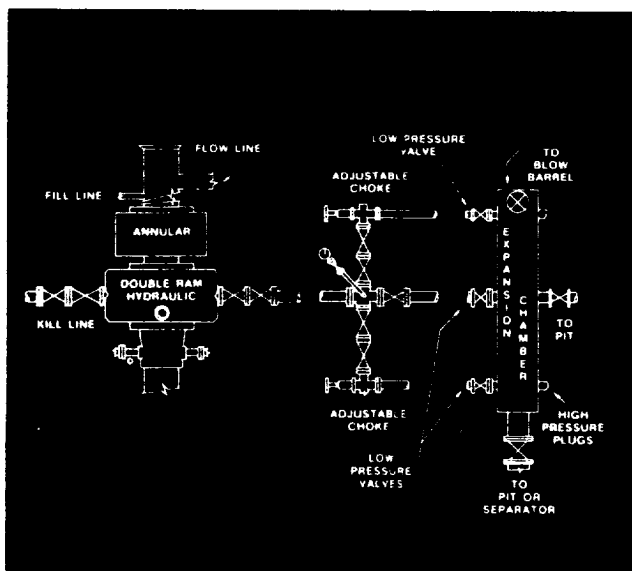
ROTARY TABLE. 20 1/2".

SHALE SHAKER. Harrisburg single screen.

ELECTRICAL POWER. Two 40-kw AC generators powered
by diesel engines. AC fluorescent or mercury vapor lights.
All vapor-proof.

FRESH WATER STORAGE. Two 500-bbl horizontal tanks.

HOUSING. One 12' x 65' air-conditioned trailer house with
sleeping and cooking facilities.



**NEW MEXICO OIL CONSERVATION COMMISSION
WELL LOCATION AND ACREAGE DEDICATION PLAT**

Form C-102
Supersedes C-128
Effective 1-1-65

All distances must be from the outer boundaries of the Section

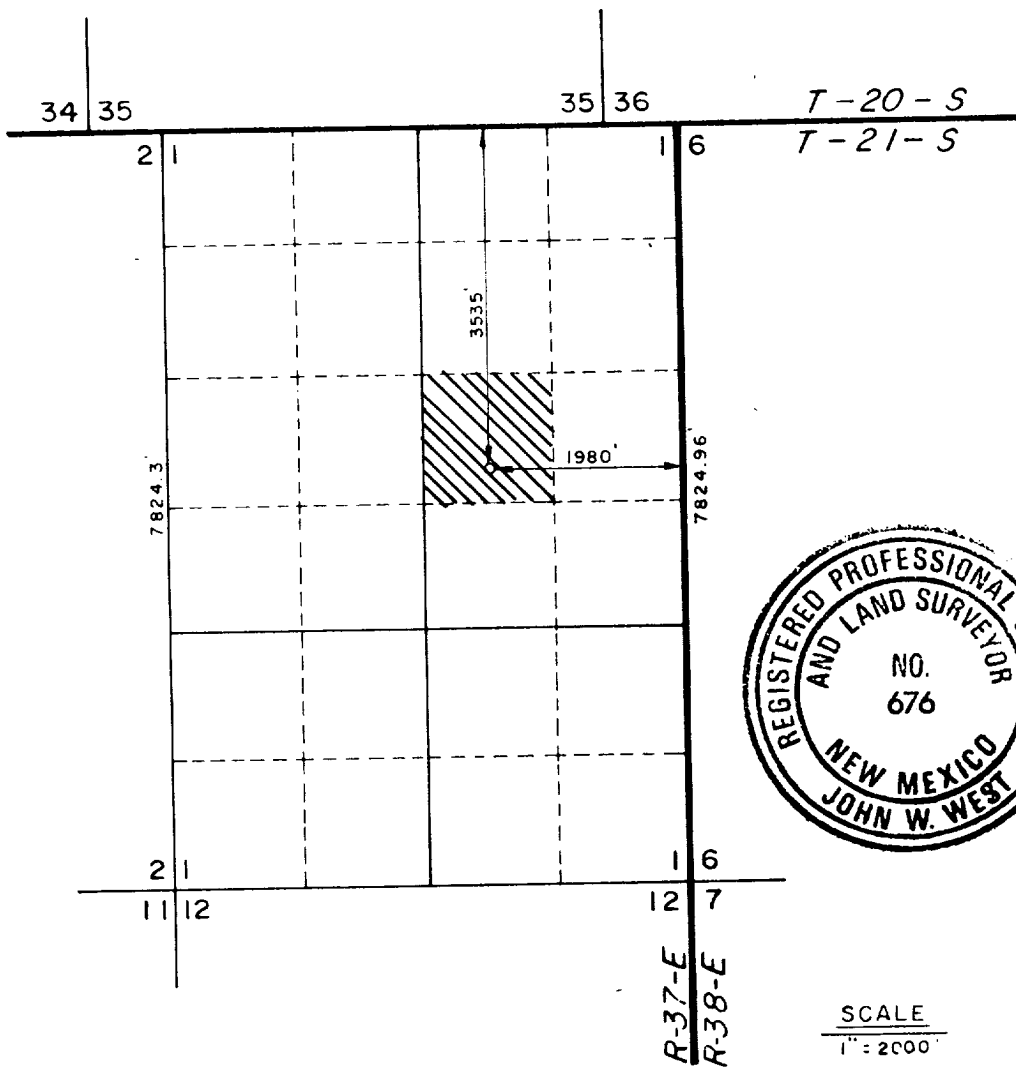
Operator Bravo Energy Incorporated			Lease Dauron		Well No. # 2
Unit Letter J	Section 1	Township 21 South	Range 37 East	County Lea	
Actual Footage Location of Well: 3535 feet from the North line and 1980 feet from the East line					
Ground Level Elev. 3545.0'	Producing Formation Abo		Pool Wantz		Dedicated Acreage: 40 Acres

1. Outline the acreage dedicated to the subject well by colored pencil or hachure marks on the plat below.
2. If more than one lease is dedicated to the well, outline each and identify the ownership thereof (both as to working interest and royalty).
3. If more than one lease of different ownership is dedicated to the well, have the interests of all owners been consolidated by communitization, unitization, force-pooling, etc?

☐ Yes ☐ No If answer is "yes," type of consolidation _____

If answer is "no," list the owners and tract descriptions which have actually been consolidated. (Use reverse side of this form if necessary.) _____

No allowable will be assigned to the well until all interests have been consolidated (by communitization, unitization, forced-pooling, or otherwise) or until a non-standard unit, eliminating such interests, has been approved by the Commission.



SCALE
1" = 2000'

CERTIFICATION	
I hereby certify that the information contained herein is true and complete to the best of my knowledge and belief.	
Name	<i>Joe T. Janica</i> Joe T. Janica
Position	Agent
Company	Bravo Energy, Inc.
Date	November 11, 1986
I hereby certify that the well location shown on this plat was plotted from field notes of actual surveys made by me or under my supervision, and that the same is true and correct to the best of my knowledge and belief.	
Date Surveyed	November 7, 1986
Registered Professional Engineer and/or Land Surveyor <i>John W. West</i>	
Certificate No.	JOHN W. WEST 676
Ronald J. Eidson 3239	

Rec'd 2/25/86

171

2-25-86

171