

NEW MEXICO OIL CONSERVATION COMMISSION
LOCATION AND ACREAGE DEDICATION PLAT

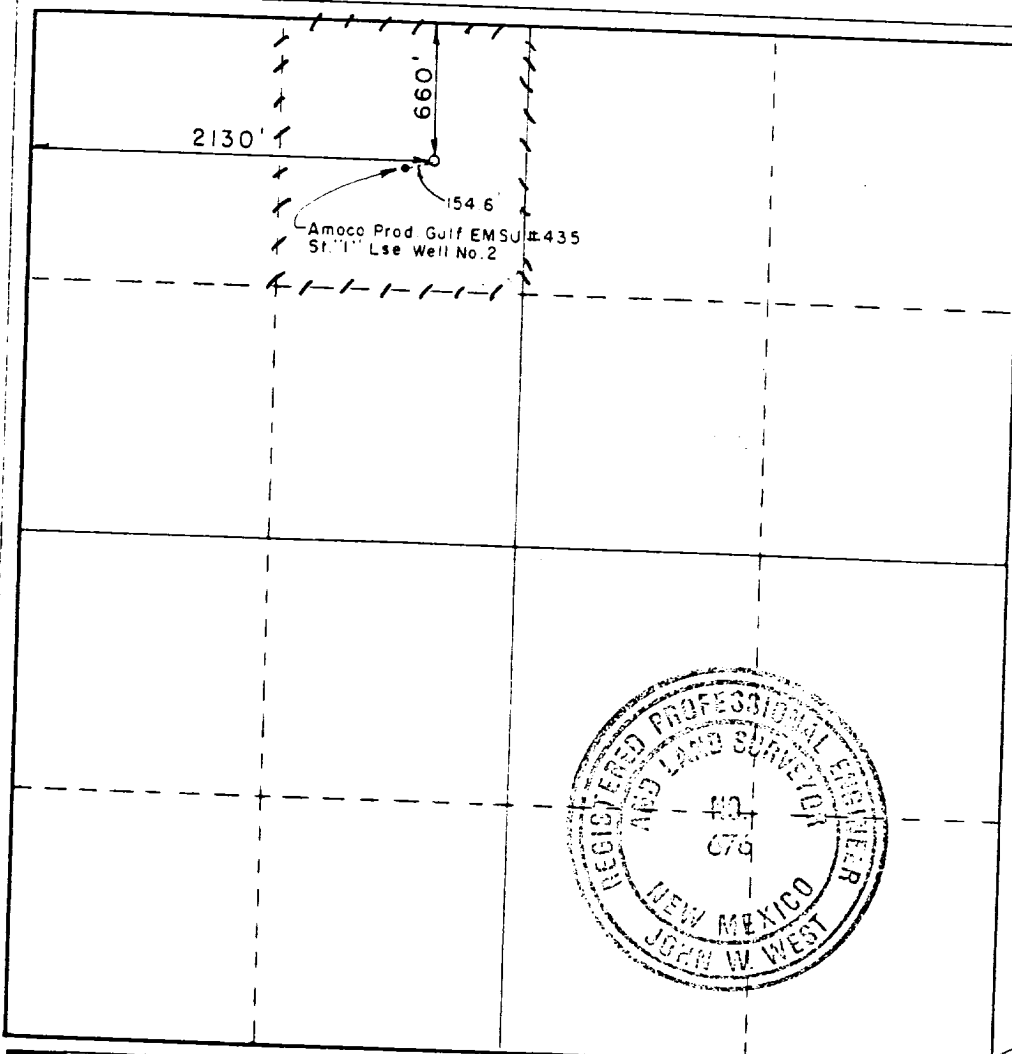
Form O-128
Supersedes O-128
Effective 1-1-85

All distances must be from the outer boundaries of the Section

| | | | | | | | | |
|--|--|-------------------------|--------------------------|-------------------------------------|---------------------------------|------------------------|--|--|
| Operator Chevron U.S.A., Inc. | | | Lease E.M.S.U. | | | Well No. 435 | | |
| Unit Letter C | Section 22 | Township 21-S | | Range 36-E | County Lea | | | |
| Actual Footage Location of Well: 660 feet from the North line and 2130' feet from the West line | | | | | | | | |
| Ground Level Elev. 3602.8 | Producing Formation Grayburg | | | Pool Eunice Monument G/SA | Designated Acreage 40 | | | |

1. Outline the acreage dedicated to the subject well by colored pencil or hachure marks on the plat below.
2. If more than one lease is dedicated to the well, outline each and identify the ownership thereof (both as to working interest and royalty).
3. If more than one lease of different ownership is dedicated to the well, have the interests of all owners been consolidated by communitization, unitization, force-pooling, etc?
☐ Yes ☐ No If answer is "yes," type of consolidation _____

If answer is "no," list the owners and tract descriptions which have actually been consolidated (Use reverse side of this form if necessary.) _____
 No allowable will be assigned to the well until all interests have been consolidated (by communitization, unitization, forced-pooling, or otherwise) or until a non-standard unit, eliminating such interests, has been approved by the Commission.



CERTIFICATION

I hereby certify that the information contained herein is true and complete to the best of my knowledge and belief.

Name
M. E. Akin
Position
Staff Drilling Engineer
Company
Chevron U.S.A. Inc.
Date
12-9-1986

I hereby certify that the well location shown on this plat was plotted from field notes of actual surveys made by me or under my supervision, and that the same is true and correct to the best of my knowledge and belief.

Date Surveyed
November 28, 1986
Registered Professional Engineer and/or Land Surveyor

Certificate No. **JOHN W. WEST, 676**
RONALD J. EIDSON, 3239

330 660 '90 1320 1650 1980 2310 2640 2000 1800 1000 800 0

RECEIVED
DEC 12 1986
OCD
HOBBS OFFICE