

Form C-102
Supersedes C-128
Effective 1-1-65

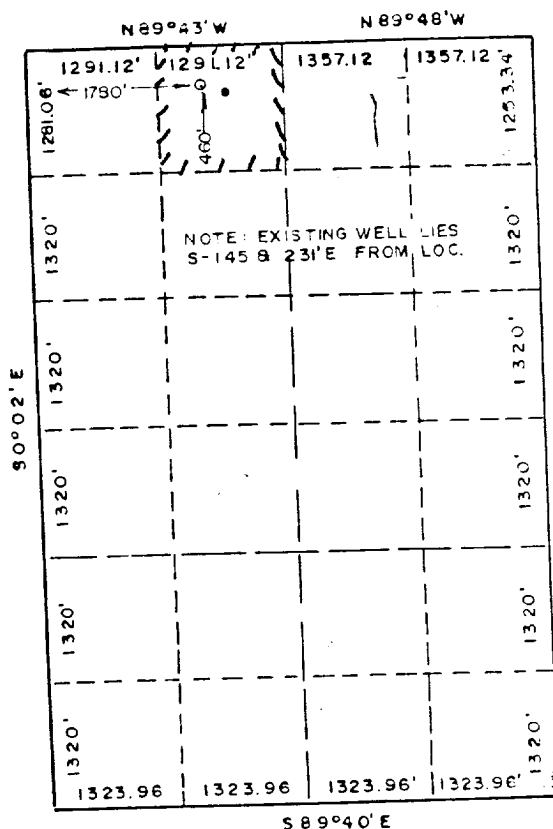
Operator CHEVRON USA INC.				Lease 25651		Well No. 184	
Unit Letter C		Section 4		Township 21 SOUTH		Range 36 EAST	
				County LEA			
Actual Footage Location of Well:							
1780		feet from the west		line and 160		feet from the north line	
Ground Level Elev. 3536.0		Producing Formation Grayburg		Pool Eunice Monument G/SA		Dedicated Acreage: 40 Acres	

1. Outline the acreage dedicated to the subject well by colored pencil or hatchure marks on the plat below.
2. If more than one lease is dedicated to the well, outline each and identify the ownership thereof (both as to working interest and royalty).
3. If more than one lease of different ownership is dedicated to the well, have the interests of all owners been consolidated by communitization, unitization, force-pooling, etc?

☐ Yes ☐ No If answer is "yes," type of consolidation _____

If answer is "no," list the owners and tract descriptions which have actually been consolidated. (Use reverse side of this form if necessary.) _____

No allowable will be assigned to the well until all interests have been consolidated (by communitization, unitization, forced-pooling, or otherwise) or until a non-standard unit, eliminating such interests, has been approved by the Commission.



CERTIFICATION

I hereby certify that the information contained herein is true and complete to the best of my knowledge and belief.

Notes

M. E. Atkins

Position

Staff Drilling Engineer

Company

Company
Chevron U.S.A. Inc.

Date _____

Date
1-28-1987

I hereby certify that the well location shown on this plat was plotted from field notes of actual surveys made by me or under my supervision, and that the same is true and correct to the best of my knowledge and belief.

Date Surveyed _____

Nov 21, 1935

Registered Professional Engineer
and/or Land Surveyor

Certificate No JOHN W. WEST

478

Frederic J. Fiksel