

**NEW MEXICO OIL CONSERVATION COMMISSION
WELL LOCATION AND ACREAGE DEDICATION PLAT**

Form C-122
Supersedes C-128
Effective 1-1-65

All distances must be from the outer boundaries of the Section

Operator Sun Exploration & Production Company				Lease J.A. AKENS		Well No. 14	
Unit Letter W	Section 3	Township 21 SOUTH	Range 36 EAST	County LEA			
Actual Footage Location of Well: 908 feet from the SOUTH line and 1650 feet from the EAST line							
Ground Level Elev. 3553.1	Producing Formation Drinkard		Pool Hardy Drinkard		Dedicated Acreage: 40 Acres		

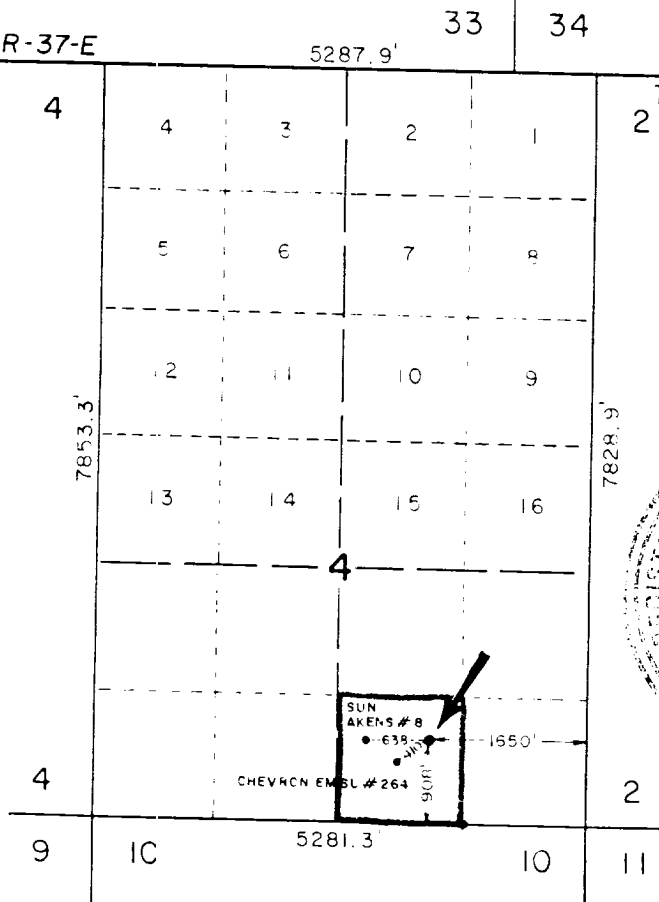
1. Outline the acreage dedicated to the subject well by colored pencil or hatchure marks on the plat below.
2. If more than one lease is dedicated to the well, outline each and identify the ownership thereof (both as to working interest and royalty).
3. If more than one lease of different ownership is dedicated to the well, have the interests of all owners been consolidated by communitization, unitization, force-pooling, etc?

☐ Yes ☐ No If answer is "yes," type of consolidation _____

If answer is "no," list the owners and tract descriptions which have actually been consolidated (Use reverse side of this form if necessary.) _____

No allowable will be assigned to the well until all interests have been consolidated (by communitization, unitization, forced-pooling, or otherwise) or until a non-standard unit, eliminating such interests, has been approved by the Commission.

T-20-S, R-37-E



SCALE = 1" = 2000'

CERTIFICATION

I hereby certify that the information contained herein is true and complete to the best of my knowledge and belief.

Maria L. Perez
Name
Maria L. Perez

Position
Associate Accountant

Company
Sun Expl. & Prod. Co.

Date
3/9/87

I hereby certify that the well location shown on this plat was plotted from field notes of actual surveys made by me or under my supervision and that the same is true and correct to the best of my knowledge and belief.

Date Surveyed

FEBRUARY 24, 1987

Registered Professional Engineer
and Surveyor

John W. West
Certificate No. **JOHN W. WEST 878**

