

MEXICO OIL CONSERVATION COMMISSION  
WELL LOCATION AND ACREAGE DEDICATION PLAT

Form C-102  
Supersedes C-128  
Effective 1-1-85

All distances must be from the outer boundaries of the Section

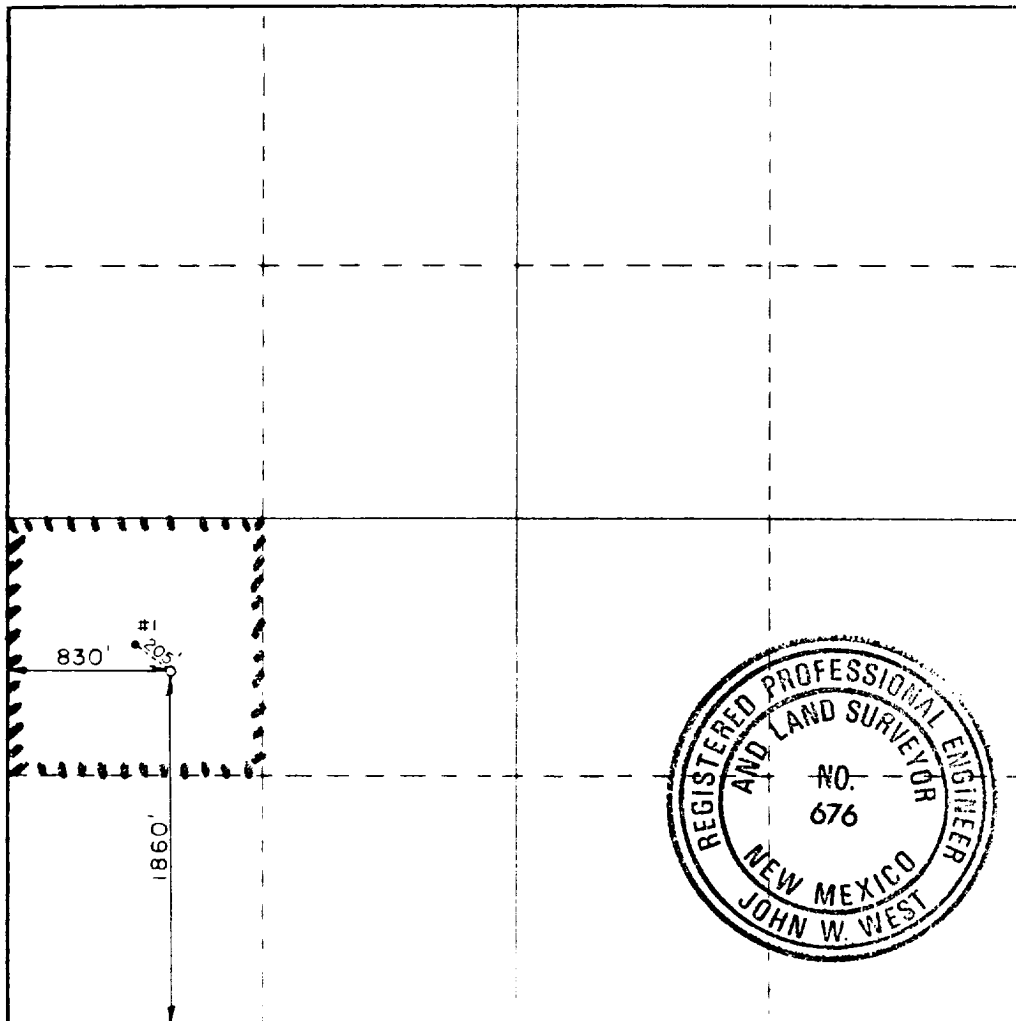
Operator Chevron U. S. A., Inc.			Lease EMSU		Well No. #318 <del>WT</del>
Tract Letter I.	Section 10	Township 21 South	Range 36 East	County Lea	
Actual Footage Location of Well: 1860 feet from the South line and 830 feet from the West line					
Ground Level Elev. 3569.9	Producing Formation Grayburg	Pool Eunice Monument G/SA		Dedicated Acreage: 40 Acres	

1. Outline the acreage dedicated to the subject well by colored pencil or hachure marks on the plat below.
2. If more than one lease is dedicated to the well, outline each and identify the ownership thereof (both as to working interest and royalty).
3. If more than one lease of different ownership is dedicated to the well, have the interests of all owners been consolidated by communitization, unitization, force-pooling, etc?

☐ Yes ☐ No If answer is "yes," type of consolidation Unitization

If answer is "no," list the owners and tract descriptions which have actually been consolidated. (Use reverse side of this form if necessary.)

No allowable will be assigned to the well until all interests have been consolidated (by communitization, unitization, forced-pooling, or otherwise) or until a non-standard unit, eliminating such interests, has been approved by the Commission.



CERTIFICATION

I hereby certify that the information contained herein is true and complete to the best of my knowledge and belief.

Name  
M. E. Ahim  
Position  
STAFF DRILLING ENGINEER  
Company  
CHEVRON U.S.A. INC.  
Date  
4-15-87

I hereby certify that the well location shown on this plat was plotted from field notes of actual surveys made by me or under my supervision, and that the same is true and correct to the best of my knowledge and belief.

Date Surveyed  
March 20, 1987  
Registered Professional Engineer  
and Land Surveyor  
John W. West

RECEIVED  
APR 21 1987  
OCC  
HOBBS OFFICE