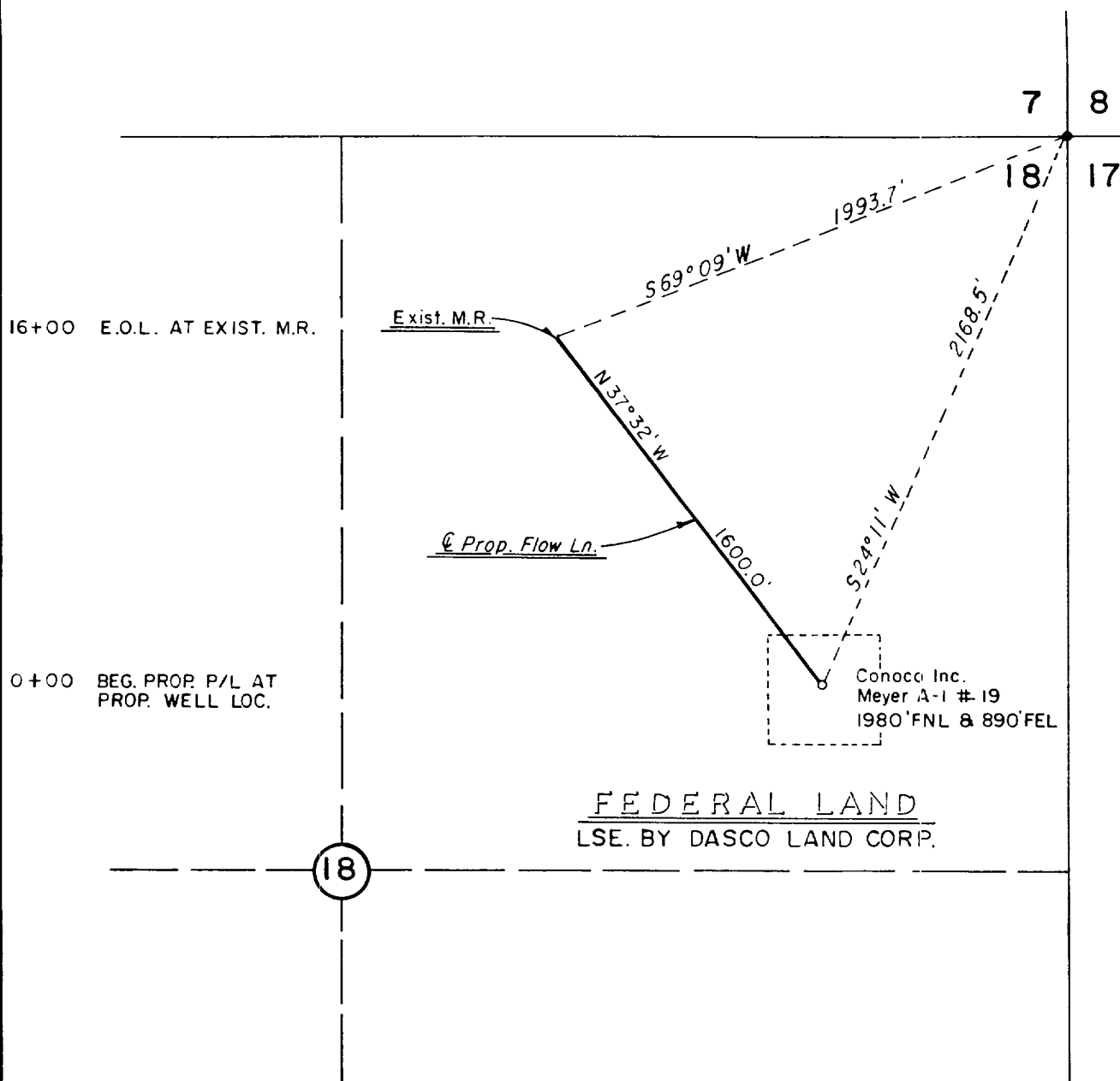


NE/4 SECTION 18, TOWNSHIP 21 SOUTH, RANGE 36 EAST, N.M.P.M.
LEA COUNTY, NEW MEXICO.



LEGAL DESCRIPTION

A strip of land 50.0 feet wide and 1600 feet or 0.30 miles in length, being 25.0 feet left and 25.0 feet right of the hereon plated Survey of Centerline.



I HEREBY CERTIFY THAT THIS PLAT WAS MADE FROM NOTES TAKEN IN THE FIELD IN A BONA FIDE SURVEY MADE UNDER MY SUPERVISION, AND THAT THE SAME IS TRUE AND CORRECT TO THE BEST OF MY KNOWLEDGE AND BELIEF.

John W. West

JOHN W. WEST, N.M. P.E. & L.S. No. 676
TEXAS R.P.S. No. 1138
RONALD J. EIDSON, N.M. L.S. No. 3239
TEXAS R.P.S. No. 1883

CONOCO, INC.

A proposed pipeline crossing Federal Land in the Northeast quarter of Section 18, Township 21 South, Range 36 East, N.M.P.M., Lea County, New Mexico.

JOHN W. WEST ENGINEERING COMPANY
CONSULTING ENGINEERS HOBBS, NEW MEXICO

Scale: 1" = 600'	Drawn By: S. Stanfield
Date: 9-1-87	Sheet 1 of 1 Sheets