

**NEW MEXICO OIL CONSERVATION SERVICE
WELL LOCATION AND ACREAGE DEDICATION PLAT**

Supersedes C-128
Effective 1-1-65

All distances must be from the outer boundaries of the Section

Operator Sun Exploration & Production Co.			Lease J.A. Akens		Well No. 15
Init Letter R	Section 3	Township 21 South	Range 36 East	County Lea	
Actual Footage Location of Well:					
2310 feet from the South line and		1650 feet from the East line			
Ground Level Elev. 3543.3	Producing Formation Drinkard	Pool Hardy Drinkard		Dedicated Acreage: 40 Acres	

1. Outline the acreage dedicated to the subject well by colored pencil or hachure marks on the plat below.
2. If more than one lease is dedicated to the well, outline each and identify the ownership thereof (both as to working interest and royalty).
3. If more than one lease of different ownership is dedicated to the well, have the interests of all owners been consolidated by communitization, unitization, force-pooling, etc?

☐ Yes ☐ No If answer is "yes," type of consolidation _____

If answer is "no," list the owners and tract descriptions which have actually been consolidated. (Use reverse side of this form if necessary.) _____

No allowable will be assigned to the well until all interests have been consolidated (by communitization, unitization, forced-pooling, or otherwise) or until a non-standard unit, eliminating such interests, has been approved by the Commission.

CERTIFICATION

I hereby certify that the information contained herein is true and complete to the best of my knowledge and belief.

Maria L. Perez

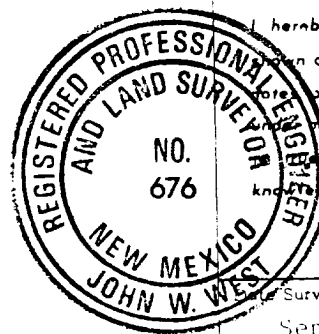
Name
Maria L. Perez

Position
Accounting Associate

Company
Sun Expl. & Prod. Co.

Date
9-29-87

I hereby certify that the well location shown on this plat was plotted from field notes of actual surveys made by me or under my supervision, and that the same are true and correct to the best of my knowledge and belief.



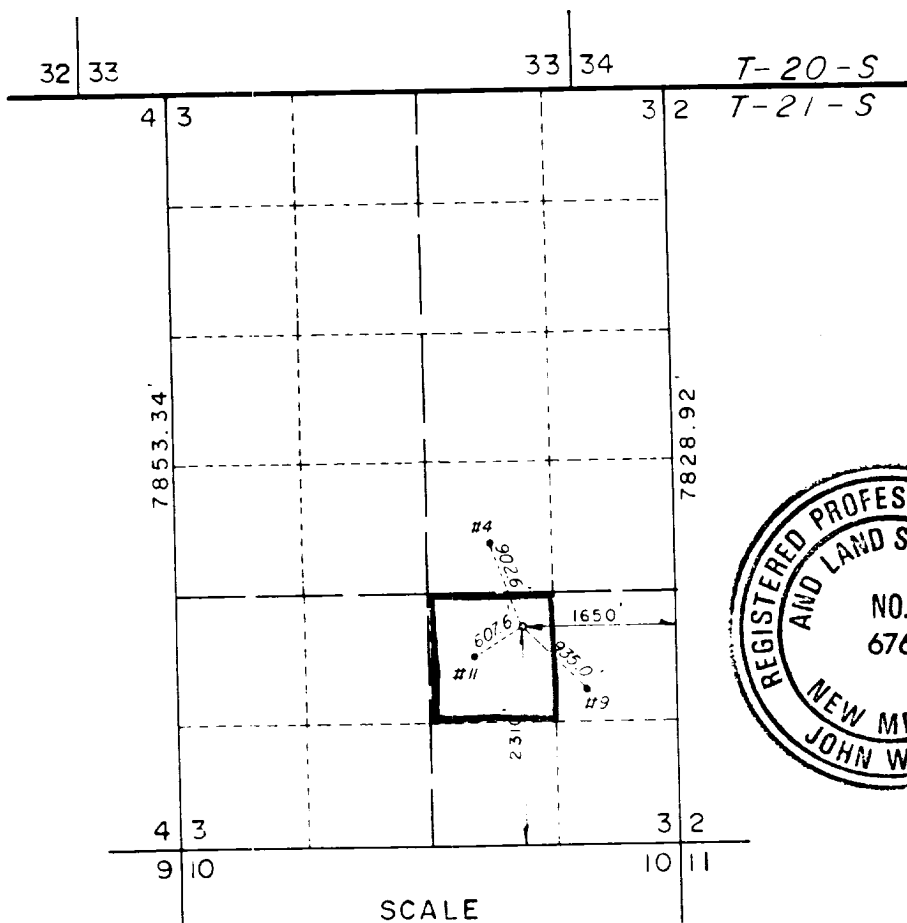
Date Surveyed
September 21, 1987

Registered Professional Engineer and/or Land Surveyor

Ronald J. Eidson

Certificate No. **JOHN W. WEST 676**

Ronald J. Eidson 3239



SCALE
1" = 2000'