

District I
PO Box 1980, Hobbs, NM 88241-1980
District II
PO Drawer DD, Artesia, NM 88211-0719
District III
1000 Rio Brazos Rd., Aztec, NM 87410
District IV
PO Box 2088, Santa Fe, NM 87504-2088

State of New Mexico
Energy, Minerals & Natural Resources Department

OIL CONSERVATION DIVISION
PO Box 2088
Santa Fe, NM 87504-2088

Form C-101
Revised February 21, 1991
Instructions on back
Submit to Appropriate District Office
State Lease - 4 Copies
Fee Lease - 3 Copies

☐ AMENDED REPORT

WELL LOCATION AND ACREAGE DEDICATION PLAT

1 API Number 30-025-30421		1 Pool Code 76480		1 Pool Name Eumont Yates 7-Rivers Queen Gas	
1 Property Code 003042		1 Property Name Lockhart B			
1 OGRID No. 005073		1 Operator Name CONOCO INC.			
				1 Well Number 10	
				1 Elevation 3570.1'	

10 Surface Location

UL or lot no. E	Section 14	Township 21S	Range 26E	Lot Ida	Feet from the	North/South line	Feet from the	East/West line	County Lea
--------------------	---------------	-----------------	--------------	---------	---------------	------------------	---------------	----------------	---------------

11 Bottom Hole Location If Different From Surface

UL or lot no.	Section	Township	Range	Lot Ida	Feet from the	North/South line	Feet from the	East/West line	County
---------------	---------	----------	-------	---------	---------------	------------------	---------------	----------------	--------

12 Dedicated Acres 160	13 Joint or Infill N	14 Consolidation Code	15 Order No. NSP 392	Simultaneously dedicate 160-acre NSP to Wells #10 & # 12					
---------------------------	-------------------------	-----------------------	-------------------------	--	--	--	--	--	--

NO ALLOWABLE WILL BE ASSIGNED TO THIS COMPLETION UNTIL ALL INTERESTS HAVE BEEN CONSOLIDATED
OR A NON-STANDARD UNIT HAS BEEN APPROVED BY THE DIVISION

				<p>17 OPERATOR CERTIFICATION</p> <p>I hereby certify that the information contained herein is true and complete to the best of my knowledge and belief</p> <p><i>Jerry W. Hoover</i> Signature Jerry W. Hoover Printed Name Sr. Conservation Coordinator Title Date 10/25/95</p>	
<p>18 SURVEYOR CERTIFICATION</p> <p>I hereby certify that the well location shown on this plat was plotted from field notes of actual surveys made by me or under my supervision, and that the same is true and correct to the best of my belief.</p> <p>Date of Survey Signature and Seal of Professional Surveyer: Certificate Number</p>					

WRS COMPLETION REPORTREISSUES SEC 14 TWP 21S RGE 36E
PI# 30-T-0003 01/23/89 30-025-30421-0000 PAGE 1

NMEX LEA * 2280FNL 660FWL SEC SW NW
STATE COUNTY FOOTAGE SPOT
CONOCO INC D DG
OPERATOR WELL CLASS INIT FIN
10 LOCKHART "B"
WELL NO. LEASE NAME
3576KB 3570GR EUMONT
OPER ELEV FIELD POOL AREA
API 30-025-30421-0000
LEASE TYPE NO PERMIT OR WELL I.D. NO.
08/01/1988 12/14/1988 ROTARY GAS
SPUD DATE COMP DATE TYPE TOO STATUS
3670 QUEEN NOT RPTD
PRO. DEPTH PROJ FORM CONTRACTOR
DTD 3680 PB 3670 FM/TD QUEEN
DRILLERS I.D. LOC I.D. PLUG BACK TO OLD I.D. FORM I.D.

LOCATION DESCRIPTION

2 MI SE OIL CENTER, NM

WELL IDENTIFICATION/CHANGES

PROJ FM CHGD FROM YATES

CASING/LINER DATA

CSG 8 5/8 @ 1400 W/ 550 SACKS
CSG 5 1/2 @ 3680 W/ 925 SACKS

TUBING DATA

TBG 2 3/8 AT 3347

INITIAL POTENTIAL

IPF 2701 MCFD 24HRS
QUEEN PERF W/ 11/IT 3448- 3606 GROSS
SITP 200
@ 3527FT BHT 105F
212MCFD TP 192 BHFP 202
314MCFD TP 186 BHFP 200
486MCFD TP 173 BHFP 193
686MCFD TP 154 BHFP 187
BH 206 FPCAOF 2701MCFD GOR DRY
GAS GTY .725
P/L CON EPNG PIPELINE

CONTINUED IC# 300257026188

REISSUES
PI# 30-T-0003 01/23/89 SEC 14 TWP 21S RGE 36E
30-025-30421-0000 PAGE 2

CONOCO INC
10 LOCKHART "B" D DG

INITIAL POTENTIAL

1ST THRU 4TH PT TEST IN 60 MINS, CK-NO DETAILS

TYPE FORMATION LTH TOP DEPTH/SUB BSE DEPTH/SUB

LOG QUEEN 3438 132
SUBSEA MEASUREMENTS FROM GR

PRODUCTION TEST DATA

PTF 618 MCFD 24/64CK 24HRS
QUEEN PERF W/ 11/IT 3448- 3606 GROSS
PERF 3448, 3455, 3462, 3483, 3490, 3511, 3554, 3568
PERF 3592, 3597, 3606
ACID 3448- 3606 500GALS
15% NEFE HCL
TP 112

LOGS AND SURVEYS /INTERVAL,TYPE/

LOGS 1380- 3680 DLL 1380- 3680 MSFL GR
LOGS FDC CNL CAL

DRILLING MEDIA /TYPE,DEPTH/

2088 10.1 PPG

DRILLING PROGRESS DETAILS

CONOCO INC
BOX 460
HOBBS, NM 88240
505-393-4141
06/03 LOC/1988/
08/04 DRLG 2088, VIS 30, PH 9.5
09/01 3680 TD, WOCT
09/02 3680 TD, WOCT
09/29 3680 TD, WOCT
10/27 3680 TD, WOCT
11/03 3680 TD, PB 3670, TSTG
11/16 DEV SURVEYS @ 2398 (1 1/4 DEG), 2892 (2 1/4 DEG)
3680 (1 1/4 DEG)
BHT 98 F @ 3680

CONTINUED

REISSUES
PI# 30-T-0003 01/23/89 SEC 14 TWP 21S RGE 36E
30-025-30421-0000 PAGE 3

CONOCO INC
10 LOCKHART "B" D DG

DRILLING PROGRESS DETAILS

01/18 RIG REL 08/11/88
3680 TD, PB 3670
COMP 12/14/88, IPCAOF 2701, GOR DRY, GTY
(GAS) .725, SIWHP 200,
SIBHP 206
PROD ZONE - QUEEN 3448-3606
NO CORES OR DSTS RPTD
REISSUED TO CORRECT PROJ FM, COMP DATE, IP
& ADD PBD
REPLACEMENT FOR CT ISSUED 11/17/88

STATE OF NEW MEXICO
ENERGY, MINERALS AND NATURAL RESOURCES DEPARTMENT
OIL CONSERVATION DIVISION

GARREY CARRUTHERS
GOVERNOR

POST OFFICE BOX 2088
STATE LAND OFFICE BUILDING
SANTA FE, NEW MEXICO 87504
(505) 827-5800

July 12, 1988

Conoco, Inc.
P.O. Box 460
Hobbs, NM 88240

Attention: David L. Wacker
Production Manager

RE: Division Administrative Order
NSP-392 (Amended)
Dated June 24, 1988

Dear Mr. Wacker:

R 36E The subject order mis-identified the well in which the non-standard 160-acre gas spacing and proration unit for the Eumont Gas Pool consisting of the W/2 W/2 of Section 14, Township 47 South, Range T21 34 East, NMPM, Lea County, New Mexico is to be re-dedicated. Therefore the well identified in paragraph three of said order shall be changed to read "Lockhart "B" Well No. 10."

Sincerely,



Michael E. Stogner
Petroleum Engineer

MES/ag

cc: ✓ Oil Conservation Division - Hobbs
New Mexico State Land Office - Santa Fe
NSP-392 File

**NEW MEXICO OIL CONSERVATION COMMISSION
WELL LOCATION AND ACREAGE DEDICATION PLAT**

Form C-102
Supersedes C-128
Effective 1-1-65

All distances must be from the outer boundaries of the Section

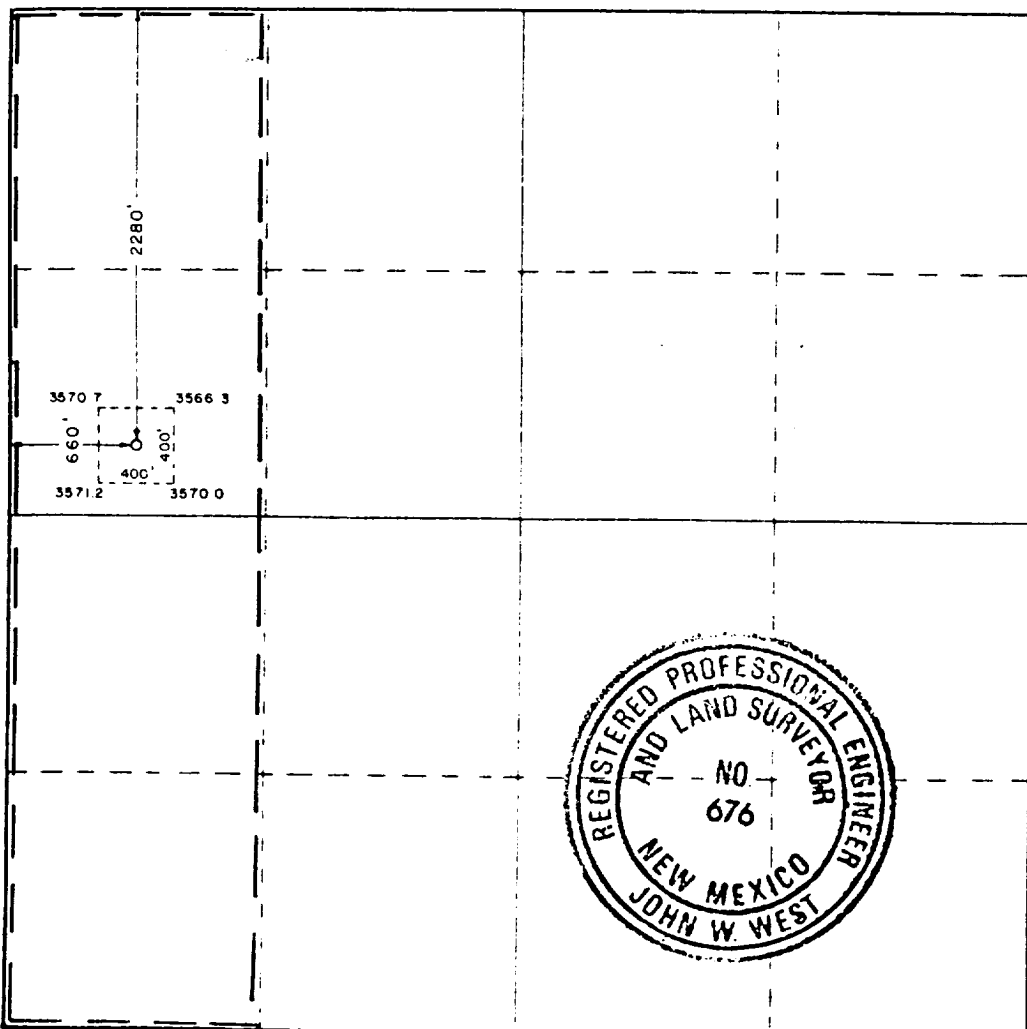
Operator Conoco, Inc			Lease Lockart "B"			Well No. 10		
Unit Letter E	Section 14	Township 21 South	Range 35 East	County Lea				
Actual Footage Location of Well: 2280 feet from the north line and 660 feet from the west line								
Ground Level Elev. 3570.1	Producing Formation Eumont Yates		Pool Eumont Yates Gas		Dedicated Acreage: 160 Acres			

1. Outline the acreage dedicated to the subject well by colored pencil or hatchure marks on the plat below.
2. If more than one lease is dedicated to the well, outline each and identify the ownership thereof (both as to working interest and royalty).
3. If more than one lease of different ownership is dedicated to the well, have the interests of all owners been consolidated by communitization, unitization, force-pooling, etc?

☐ Yes ☐ No If answer is "yes," type of consolidation _____

If answer is "no," list the owners and tract descriptions which have actually been consolidated. (Use reverse side of this form if necessary.) _____

No allowable will be assigned to the well until all interests have been consolidated (by communitization, unitization, forced-pooling, or otherwise) or until a non-standard unit, eliminating such interests, has been approved by the Commission.



CERTIFICATION

I hereby certify that the information contained herein is true and complete to the best of my knowledge and belief.

Signature: *D.F. Finney*
Name: **D.F. Finney**

Position: **Adm. Supervisor**

Company: **Conoco Inc.**

Date: **5/26/88**

I hereby certify that the well location shown on this plat was plotted from field notes of actual surveys made by me or under my supervision, and that the same is true and correct to the best of my knowledge and belief.

Date Surveyed:
March 21, 1988

Registered Professional Engineer and/or Land Surveyor

Signature: *Ronald J. Eidson*

Certificate No. **JOHN W. WEST, 676**
RONALD J. EIDSON, 3239



RECEIVED

NOV 9 1988

OCD
HOBBS OFFICE

7-13-88

Memo

From

EVELYN DOWNS
Oil Conservation Staff
Specialist

To Mike Stogner,

Conoco has filed the APD
for this replacement well
on this production unit & it is
Lockhart B Well #10

not Lockhart B#5.

Do we need to correct our
order or do they need to
file something else?

Thanks,

Evelyn



ENERGY, MINERALS AND NATURAL RESOURCES DEPARTMENT

OIL CONSERVATION DIVISION

GARREY CARRUTHERS
GOVERNOR

POST OFFICE BOX 2088
STATE LAND OFFICE BUILDING
SANTA FE, NEW MEXICO 87504
(505) 827-5800

June 24, 1988

Conoco, Inc.
P.O. Box 460
Hobbs, NM 88240

Attention: David L. Wacker
Division Manager

Administrative Order NSP-392 (Amended)

Dear Mr. Wacker:

Division Administrative Order NSP-392, dated September 25, 1957, authorized a 160-acre non-standard gas spacing and proration unit for the Eumont Gas Pool, consisting of the W/2 of Section 14, Township 21 South, Range 36 East, NMPM, Lea County, New Mexico, to be dedicated to the Lockhart "B-14" Well No. 5 located 1980 feet from the South line and 660 feet from the West line (Unit L) of said Section 14.

Per your letter dated June 1, 1988, it is my understanding that said Well No. 5 has been contributed to the Chevron U.S.A., Inc. Eunice Monument South Unit Waterflood Project and is no longer producing from Eumont Gas Pool.

By authority granted me under the provisions of the Special Rules and Regulations for the Eumont Gas Pool as promulgated by Rule 2(a)4 of Division Order No. R-8170, as amended, the above-described 160-acre non-standard gas spacing and proration unit is hereby dedicated to the applicant's proposed Lockhart "B" Well No. 5 to be located at a standard gas well location 2280 feet from the North line and 660 feet from the West line (Unit E) of said Section 14.

#10