

**NEW MEXICO OIL CONSERVATION COMMISSION
WELL LOCATION AND ACREAGE DEDICATION PLAT**

Form O-102
Supersedes O-128
Effective 1-1-65

All distances must be from the outer boundaries of the Section

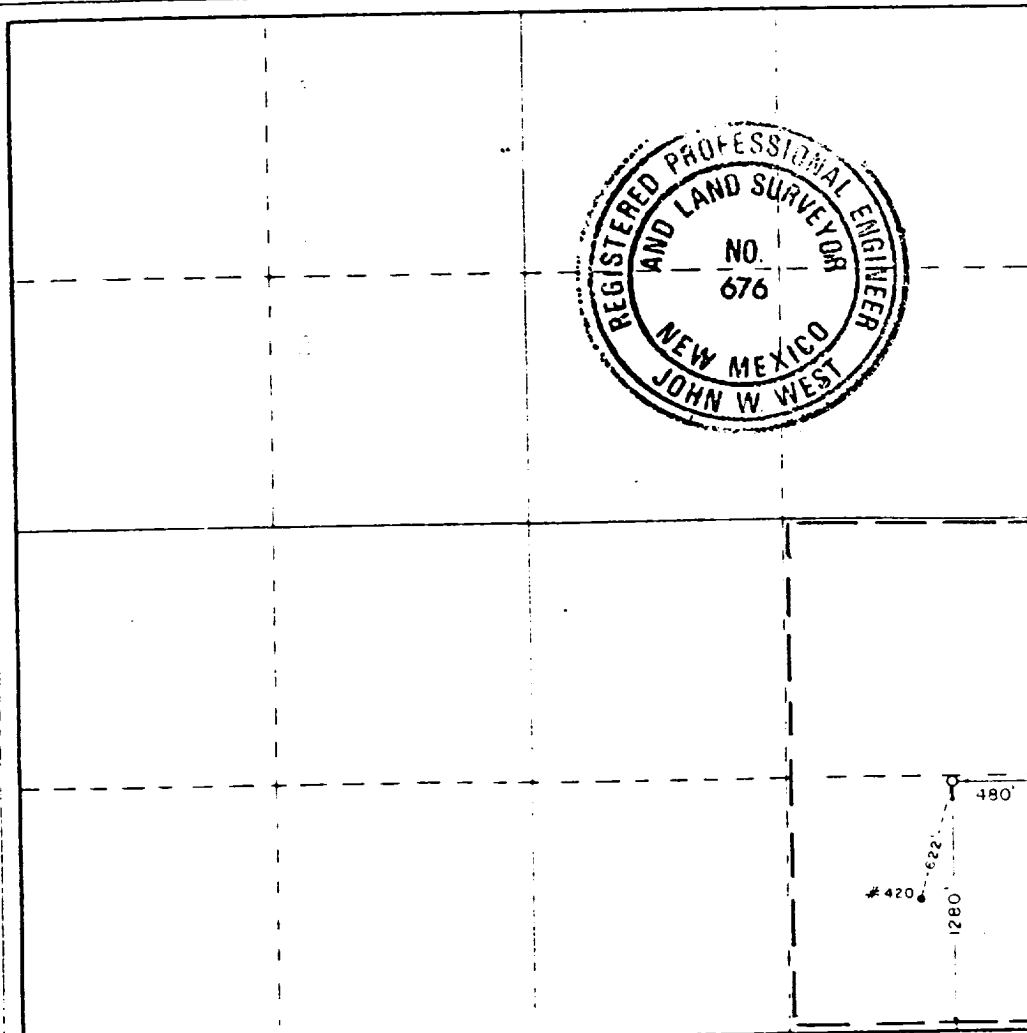
Operator Conoco, Inc.			Lease Meyer B-17			Well No. 1		
Plot Letter p	Section 17	Township 21 South	Range 26 East	County Lea				
Actual Footage Location of Well: <div style="display: flex; justify-content: space-between;"> 1280 feet from the south line and 480 feet from the east line </div>								
Ground Level Elev. 3639.1	Producing Formation Eumant Queen		Pool Eumant Queen Gas			Estimated Acreage 80 Acs.		

1. Outline the acreage dedicated to the subject well by colored pencil or hachure marks on the plat below.
2. If more than one lease is dedicated to the well, outline each and identify the ownership thereof (both as to work interest and royalty):
3. If more than one lease of different ownership is dedicated to the well, have the interests of all owners been consolidated by communitization, unitization, force-pooling, etc?

☐ Yes ☐ No If answer is "yes," type of consolidation _____

If answer is "no," list the owners and tract descriptions which have actually been consolidated. (Use reverse side of this form if necessary.) _____

No allowable will be assigned to the well until all interests have been consolidated (by communitization, unitization, forced-pooling, or otherwise) or until a non-standard unit, eliminating such interests, has been approved by the Commission.



CERTIFICATION

I hereby certify that the information herein is true and complete to the best of my knowledge and belief.

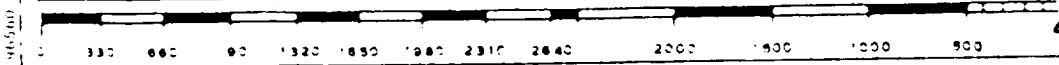
[Signature] D.F.
 Adm. Supervisor
 Conoco Inc.

5/25/88

I hereby certify that the well shown on this plat was plotted from notes of actual surveys made under my supervision, and that it is true and correct to the knowledge and belief.

I the Surveyor
 March 21, 1988
 Registered Professional Engineer and Land Surveyor

[Signature]
 Certificate No. JOHN W. W.
 RONALD J.



RECEIVED

NOV 9 1988

OCD
HOBBS OFFICE