

Submit to Appropriate  
District Office  
State Lease - 4 copies  
Fee Lease - 3 copies

State of New Mexico  
Energy, Minerals and Natural Resources Department

Form C-102  
Revised 1-1-89

OIL CONSERVATION DIVISION

DISTRICT I  
P.O. Box 1980, Hobbs, NM 88240

P.O. Box 2088

DISTRICT II  
P.O. Drawer DD, Artesia, NM 88210

Santa Fe, New Mexico 87504-2088

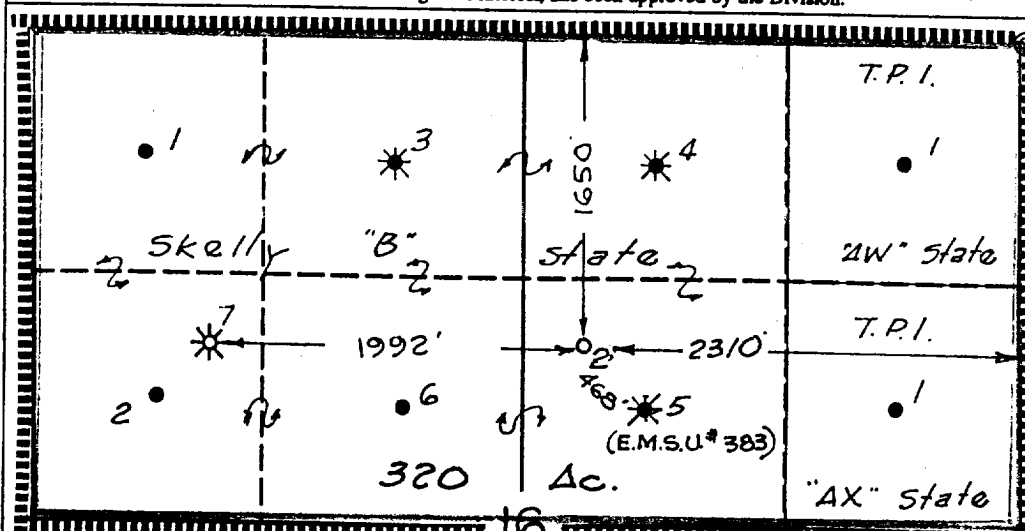
DISTRICT III  
1000 Rio Brazos Rd., Aztec, NM 87410

WELL LOCATION AND ACREAGE DEDICATION PLAT

All Distances must be from the outer boundaries of the section

Operator Texaco Producing Inc.			Lease Skelly "B" State Com.		Well No. 2
Unit Letter G	Section 16	Township 21 South	Range 36 East	County NMPM Lea	
Actual Footage Location of Well: 1650 feet from the North line and 2310 feet from the East line					
Ground level Elev. 3595		Producing Formation Queen		Pool Eumont Yates 7rvrs	Dedicated Acreage: 320 Acres

1. Outline the acreage dedicated to the subject well by colored pencil or hatchure marks on the plat below.
2. If more than one lease is dedicated to the well, outline each and identify the ownership thereof (both as to working interest and royalty).
3. If more than one lease of different ownership is dedicated to the well, have the interest of all owners been consolidated by communitization, unitization, force-pooling, etc.?  
☒ Yes ☐ No If answer is "yes" type of consolidation Communitization  
If answer is "no" list the owners and tract descriptions which have actually been consolidated. (Use reverse side of this form if necessary.)  
No allowable will be assigned to the well until all interests have been consolidated (by communitization, unitization, forced-pooling, or otherwise) or until a non-standard unit, eliminating such interest, has been approved by the Division.



OPERATOR CERTIFICATION

I hereby certify that the information contained herein is true and complete to the best of my knowledge and belief.

Signature Royce D. Mariott  
Printed Name Royce D. Mariott  
Position Division Surveyor  
Company Texaco Producing Inc.  
Date February 2, 1990

SURVEYOR CERTIFICATION

I hereby certify that the well location shown on this plat was plotted from field notes of actual surveys made by me or under my supervision, and that the same is true and correct to the best of my knowledge and belief.

Date Surveyed January 30, 1990  
Signature & Seal of Professional Surveyor John S. Piper  
Certificate No. 7254 John S. Piper