

Submit to Appropriate  
District Office  
State Lease - 4 copies  
Fee Lease - 3 copies

State of New Mexico  
Energy, Minerals and Natural Resources Department

Form C-102  
Revised 1-1-89

OIL CONSERVATION DIVISION

P.O. Box 2088  
Santa Fe, New Mexico 87504-2088

DISTRICT I  
P.O. Box 1980, Hobbs, NM 88240

DISTRICT II  
P.O. Drawer DD, Artesia, NM 88210

DISTRICT III  
1000 Rio Brazos Rd., Aztec, NM 87410

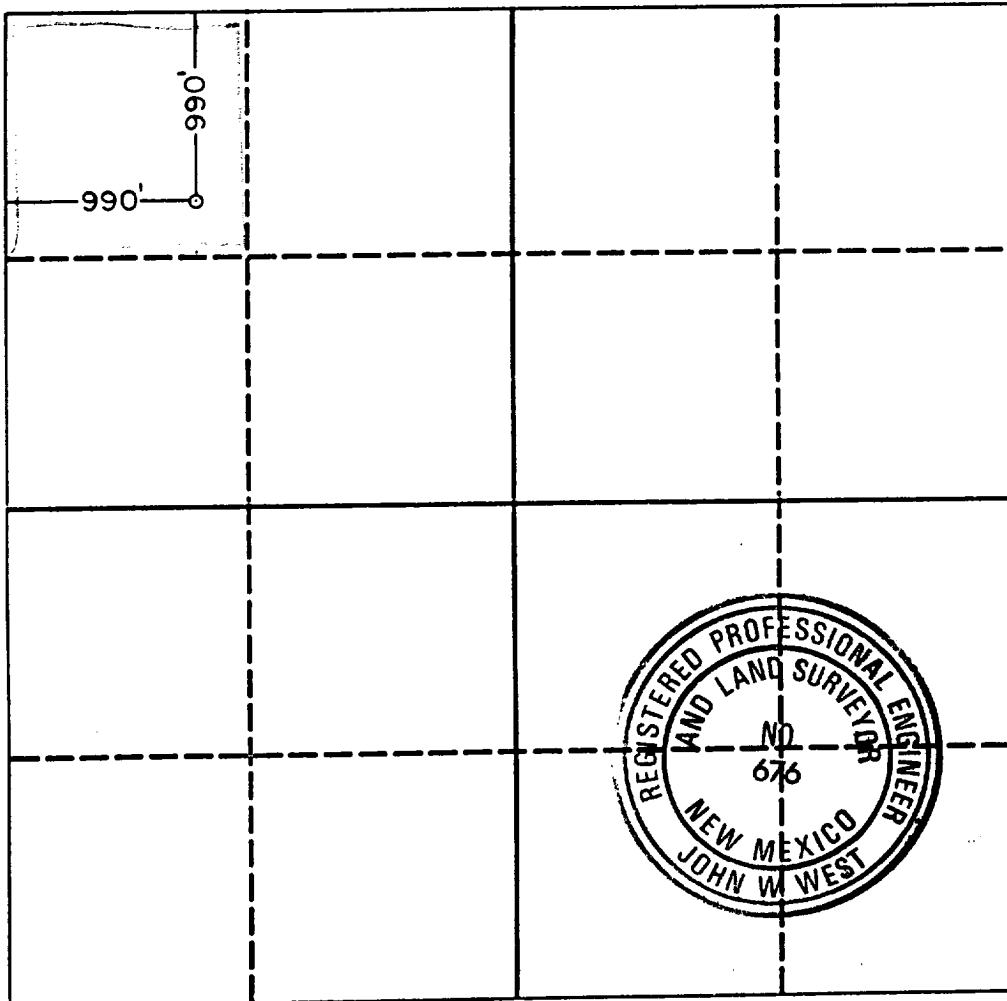
WELL LOCATION AND ACREAGE DEDICATION PLAT

All Distances must be from the outer boundaries of the section

RECEIVED MAY 11 1990

Operator STEVENS & TULL, INC.			Lease Wilson State		Well No. 1
Unit Letter D	Section 11	Township 21 South	Range 34 East	County Lea	NMPM
Actual Footage Location of Well: 990 feet from the North line and 990 feet from the West line					
Ground level Elev. 3696.3	Producing Formation Yates -SR		Pool Wilson Yates-SR		Dedicated Acreage: 40 Acres

1. Outline the acreage dedicated to the subject well by colored pencil or hatchure marks on the plat below.
2. If more than one lease is dedicated to the well, outline each and identify the ownership thereof (both as to working interest and royalty).
3. If more than one lease of different ownership is dedicated to the well, have the interest of all owners been consolidated by communitization, unitization, force-pooling, etc?  
☐ Yes ☐ No If answer is "yes" type of consolidation \_\_\_\_\_  
If answer is "no" list the owners and tract descriptions which have actually been consolidated. (Use reverse side of this form if necessary).  
No allowable will be assigned to the well until all interests have been consolidated (by communitization, unitization, forced-pooling, or otherwise) or until a non-standard unit, eliminating such interest, has been approved by the Division.



OPERATOR CERTIFICATION

I hereby certify that the information contained herein is true and complete to the best of my knowledge and belief.

Signature  
*Rodney L. Seale*  
Printed Name  
Rodney L. Seale

Position  
Engineer  
Company  
Stevens & Tull, Inc.

Date  
5/11/90

SURVEYOR CERTIFICATION

I hereby certify that the well location shown on this plat was plotted from field notes of actual surveys made by me or under my supervision, and that the same is true and correct to the best of my knowledge and belief.

Date Surveyed  
May 9, 1990

Signature & Seal of  
Professional Surveyor

*John W. West*  
Certificate No. JOHN W. WEST, 676  
RONALD J. EIDSON, 3239

06-4-6 8274  
ELF

RECEIVED  
MAY 14 1990  
OCD  
HOBBS OFFICE