

OIL CONSERVATION DIVISION

P.O. Box 2088

Santa Fe, New Mexico 87504-2088

DISTRICT I

P.O. Box 1980, Hobbs, NM 88240

DISTRICT II

P.O. Drawer DD, Artesia, NM 88210

DISTRICT III

1000 Rio Brazos Rd., Aztec, NM 87410

WELL LOCATION AND ACREAGE DEDICATION PLAT

All Distances must be from the outer boundaries of the section

Operator CHEVRON U S A , INC			Lease Bell-Janda Gas Com.		Well No. 1
Unit Letter L	Section 15	Township 21 South	Range 36 East	County Lea	
Actual Footage Location of Well: 1650 feet from the South line and 990 feet from the West line					
Ground level Elev. 3586.0		Producing Formation Eumont		Pool Yates/Queen	Dedicated Acreage: 320 Acres

1. Outline the acreage dedicated to the subject well by colored pencil or hatchure marks on the plat below.

2. If more than one lease is dedicated to the well, outline each and identify the ownership thereof (both as to working interest and royalty).

3. If more than one lease of different ownership is dedicated to the well, have the interest of all owners been consolidated by communitization, unitization, force-pooling, etc.?

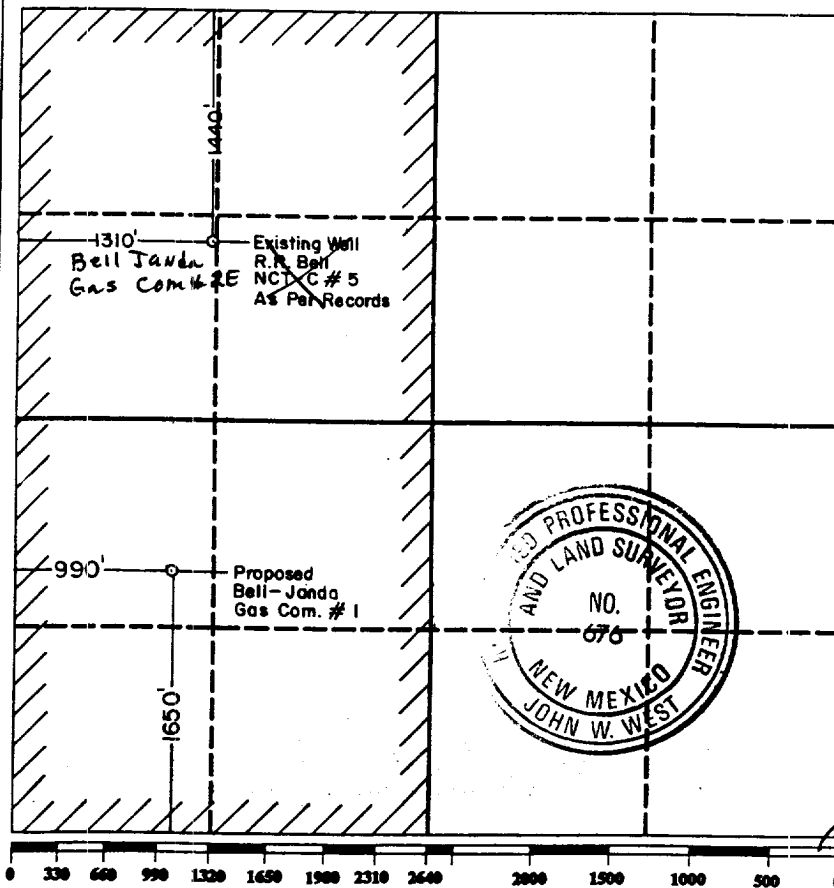
☒ Yes

☐ No

If answer is "yes" type of consolidation Communitization

If answer is "no" list the owners and tract descriptions which have actually been consolidated. (Use reverse side of this form if necessary.)

No allowable will be assigned to the well until all interests have been consolidated (by communitization, unitization, forced-pooling, or otherwise) or until a non-standard unit, eliminating such interest, has been approved by the Division.



OPERATOR CERTIFICATION

I hereby certify that the information contained herein is true and complete to the best of my knowledge and belief.

Signature

M. E. Akins

Printed Name

M. E. Akins

Position

Staff Drlg. Engr.

Company

Chevron U.S.A., Inc.

Date

6/13/90

SURVEYOR CERTIFICATION

I hereby certify that the well location shown on this plat was plotted from field notes of actual surveys made by me or under my supervision, and that the same is true and correct to the best of my knowledge and belief.

Date Surveyed

June 5, 1990

Signature & Seal of Professional Surveyor

John W. West

Certificate No. **JOHN W. WEST, 676**

RONALD J. EIDSON, 3239

R 7924 NSP