

UNITED STATES
DEPARTMENT OF THE INTERIOR
BUREAU OF LAND MANAGEMENT

NEW MEXICO 88240

5. LEASE DESIGNATION AND SERIAL NO.

NM-42814

6. IF INDIAN, ALLOTTEE OR TRIBE NAME

7. UNIT AGREEMENT NAME

8. FARM OR LEASE NAME

FEDERAL 31

9. WELL NO.

1

10. FIELD AND POOL, OR WILDCAT

UNDES. BILBREY MORROW GAS

11. SEC., T., R., M., OR BLK.
AND SURVEY OR AREA

SEC. 31, T. 21 S., R. 32 E.

12. COUNTY OR PARISH 13. STATE

LEA

NEW MEXICO

APPLICATION FOR PERMIT TO DRILL, DEEPEN, OR PLUG BACK

1a. TYPE OF WORK

DRILL ☒

DEEPEN ☐

PLUG BACK ☐

b. TYPE OF WELL

OIL
WELL ☐

GAS
WELL ☒

OTHER

SINGLE
ZONE ☒

MULTIPLE
ZONE ☐

2. NAME OF OPERATOR

POGO PRODUCING COMPANY

3. ADDRESS OF OPERATOR

P. O. BOX 10340, MIDLAND, TEXAS 79702

4. LOCATION OF WELL (Report location clearly and in accordance with any State requirements.)
At surface

2310' FSL AND 660' FEL OF SECTION 31

At proposed prod. zone

14. DISTANCE IN MILES AND DIRECTION FROM NEAREST TOWN OR POST OFFICE*

30 MILES EAST OF CARLSBAD, NEW MEXICO

15. DISTANCE FROM PROPOSED*

LOCATION TO NEAREST
PROPERTY OR LEASE LINE, FT.
(Also to nearest drlg. unit line, if any)

660'

16. NO. OF ACRES IN LEASE

320

17. NO. OF ACRES ASSIGNED
TO THIS WELL

320

18. DISTANCE FROM PROPOSED LOCATION*
TO NEAREST WELL, DRILLING, COMPLETED,
OR APPLIED FOR, ON THIS LEASE, FT.

-

19. PROPOSED DEPTH

15,100'

20. ROTARY OR CABLE TOOLS

ROTARY

21. ELEVATIONS (Show whether DF, RT, GR, etc.)

3663' GL

22. APPROX. DATE WORK WILL START*

UPON APPROVAL

23. PROPOSED CASING AND CEMENTING PROGRAM

SIZE OF HOLE	SIZE OF CASING	WEIGHT PER FOOT	SETTING DEPTH	QUANTITY OF CEMENT
17-1/2"	13-3/8"	54.5#	800'	SUFFICIENT TO CIRCULATE
12-1/4"	9-5/8"	40#	4700'	SUFFICIENT TO CIRCULATE
8-1/2"	7"	26# & 29#	12,500'	1125 SACKS
6-1/8"	5" Liner	18#	15,100'	300 SACKS

AFTER SETTING PRODUCTION CASING, PAY ZONE WILL BE PERFORATED
AND STIMULATED AS NECESSARY.

SEE ATTACHED FOR: SUPPLEMENTAL DRILLING DATA
BOP SKETCHES
SURFACE USE AND OPERATIONS PLAN

IN ABOVE SPACE DESCRIBE PROPOSED PROGRAM: If proposal is to deepen or plug back, give data on present productive zone and proposed new productive zone. If proposal is to drill or deepen directionally, give pertinent data on subsurface locations and measured and true vertical depths. Give blowout preventer program, if any.

24.

SIGNED Richard Wright

TITLE Drilling and Production Supt. DATE 11-30-90

(This space for Federal or State office use)

PERMIT NO. _____

APPROVAL DATE _____

APPROVED BY _____

TITLE _____

DATE 11-30-90

CONDITIONS OF APPROVAL, IF ANY:

APPROVAL SUBJECT TO
GENERAL REQUIREMENTS AND
SPECIAL STIPULATIONS

*See Instructions On Reverse Side

Submit to Appropriate
District Office
State Lease - 4 copies
Fee Lease - 3 copies

State of New Mexico
Energy, Minerals and Natural Resources Department

Form C-102
Revised 1-1-89

OIL CONSERVATION DIVISION

P.O. Box 2088
Santa Fe, New Mexico 87504-2088

DISTRICT I
P.O. Box 1980, Hobbs, NM 88240

DISTRICT II
P.O. Drawer DD, Artesia, NM 88210

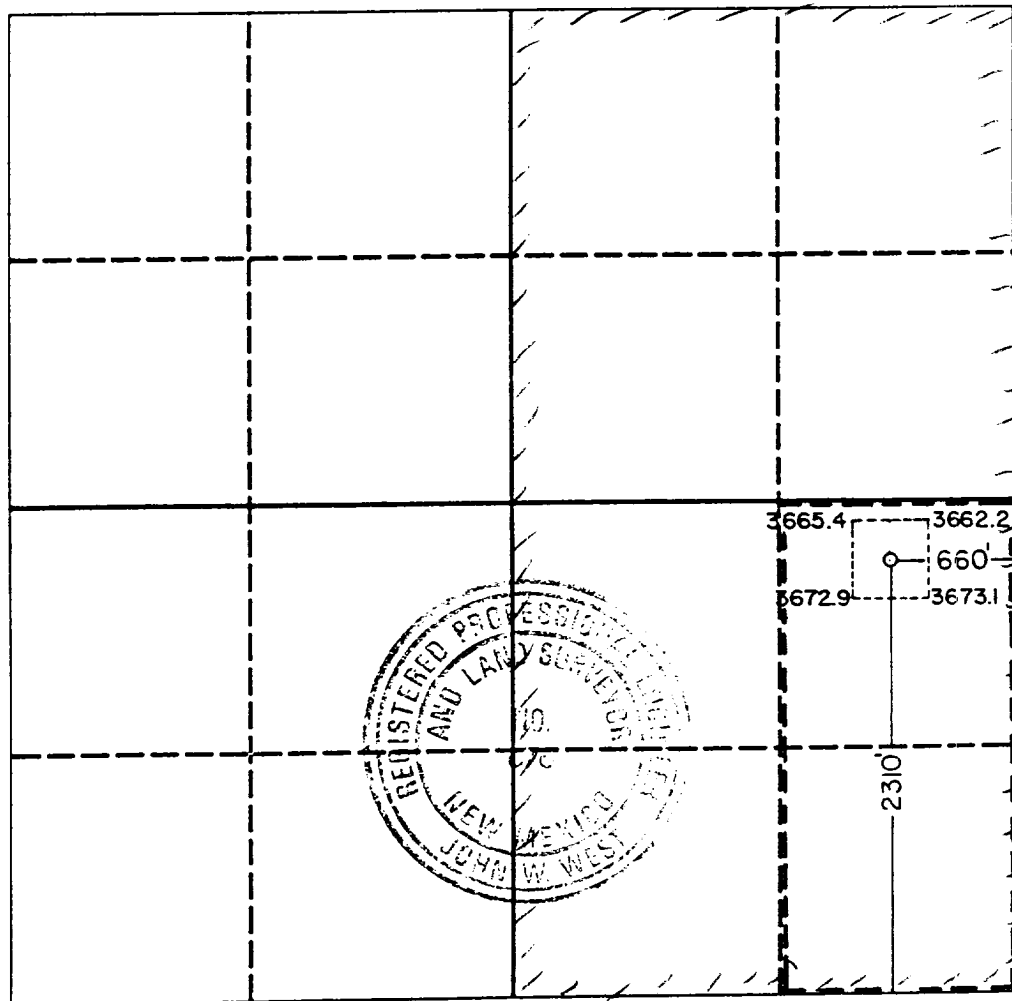
DISTRICT III
1000 Rio Brazos Rd., Aztec, NM 87410

WELL LOCATION AND ACREAGE DEDICATION PLAT

All Distances must be from the outer boundaries of the section

Operator POGO PRODUCING COMPANY			Lease Federal 31		Well No. 1
Unit Letter I	Section 31	Township 21 South	Range 32 East	County Lea	
Actual Footage Location of Well: 2310 feet from the South line and 660 feet from the East line					
Ground level Elev. 3663.0	Producing Formation MORROW	Pool UNDESIGNATED BILBREY MORROW GAS		Dedicated Acreage: 320 Acres	

- Outline the acreage dedicated to the subject well by colored pencil or hatchure marks on the plat below.
- If more than one lease is dedicated to the well, outline each and identify the ownership thereof (both as to working interest and royalty).
- If more than one lease of different ownership is dedicated to the well, have the interest of all owners been consolidated by communitization, unitization, force-pooling, etc?
☐ Yes ☐ No If answer is "yes" type of consolidation _____
If answer is "no" list the owners and tract descriptions which have actually been consolidated. (Use reverse side of this form if necessary.)
No allowable will be assigned to the well until all interests have been consolidated (by communitization, unitization, forced-pooling, or otherwise) or until a non-standard unit, eliminating such interest, has been approved by the Division.



OPERATOR CERTIFICATION

I hereby certify that the information contained herein is true and complete to the best of my knowledge and belief.

Signature
Richard Wright
Printed Name
Richard Wright
Position
Drilling and Prod. Supt.
Company
POGO PRODUCING COMPANY
Date
November 9, 1990

SURVEYOR CERTIFICATION

I hereby certify that the well location shown on this plat was plotted from field notes of actual surveys made by me or under my supervision, and that the same is true and correct to the best of my knowledge and belief.

Date Surveyed
October 31, 1990

Signature & Seal of
Professional Surveyor

Signature
John W. West
Certificate No.
JOHN W. WEST, 676
RONALD J. EIDSON, 3239

SUPPLEMENTAL DRILLING DATA

POGO PRODUCING COMPANY

WELL NO.1 FEDERAL 31

1. SURFACE FORMATION: Quaternary.

2. ESTIMATED TOPS OF GEOLOGIC MARKERS:

Rustler Anhydrite	730'
Delaware Lime	4600'
Bone Springs	8610'
Wolfcamp	11,750'
Strawn	13,125'
Atoka	13,320'
Morrow Lime	13,830'
Morrow Clastics	14,060'
Lower Morrow	14,720'

3. ANTICIPATED POSSIBLE HYDROCARBON BEARING ZONES:

MORROW	Gas
--------	-----

4. PROPOSED CASING AND CEMENTING PROGRAM:

Casing design data sheet and cementing program are attached.

5. PRESSURE CONTROL EQUIPMENT:

Blowout prevention equipment, while drilling below the surface casing, will be a 3000 psi working pressure stack.

The BOP stack, while drilling below the first intermediate casing will be a 5000 psi working pressure stack, and, while drilling below the second intermediate casing, a 10,000 psi working pressure stack will be in use.

BOP sketches are attached.

6. CIRCULATING MEDIUM:

Surface to 800 feet: Fresh water gel spud mud. Viscosity 34 to 38 as required for hole cleaning.

800 feet to 4700 feet: Brine conditioned as necessary for control of viscosity. Weight 8.4 to 10. Viscosity 32 to 36. PH 9 to 10.

4700 feet to 12,500 feet: Fresh water cut with brine if necessary to increase weight. Weight 9.5 to 10. Viscosity 28-30. pH 9 to 10

12,500 feet to T.D.: Water base drilling fluid conditioned as necessary for control of viscosity, pH, and water-loss. Weight 10 to 12. Viscosity 38-40. pH 9 to 10. Filtrate 6 to 15 cc.

7. AUXILIARY EQUIPMENT:

Geolograph from surface to total depth.

Mud logging trailer to be in use below 4700 feet.

8. TESTING, LOGGING AND CORING PROGRAMS:

Drill stem tests will be made when data indicate a test is warranted.

It is planned that electric logs will include GR-CNL-Density logs and GR-DLL logs

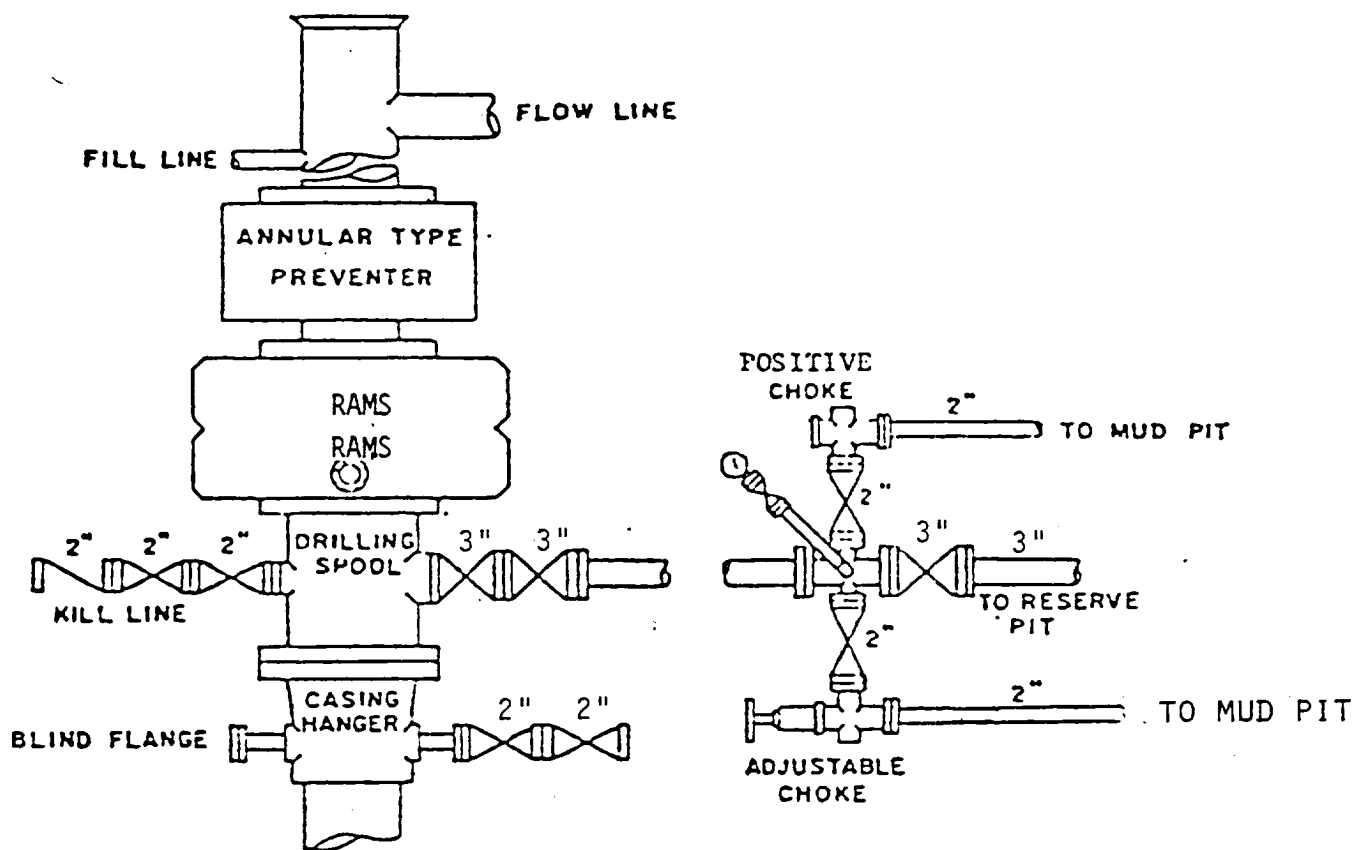
No coring is planned.

9. ABNORMAL PRESSURES AND TEMPERATURES:

None anticipated.

10. ANTICIPATED STARTING DATE:

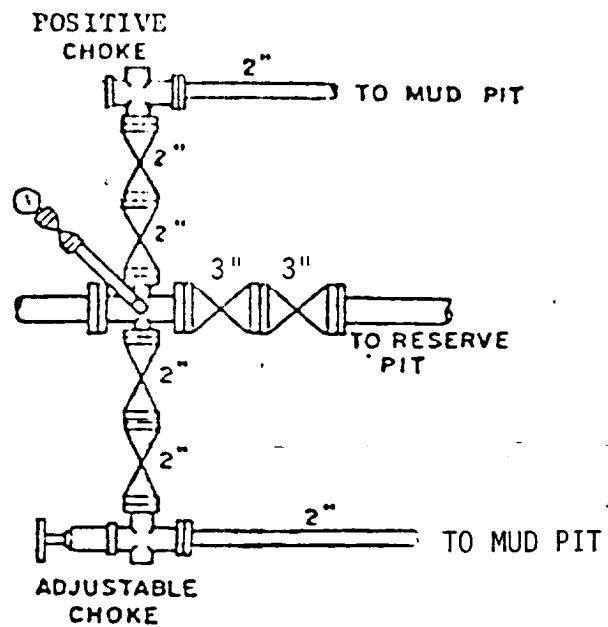
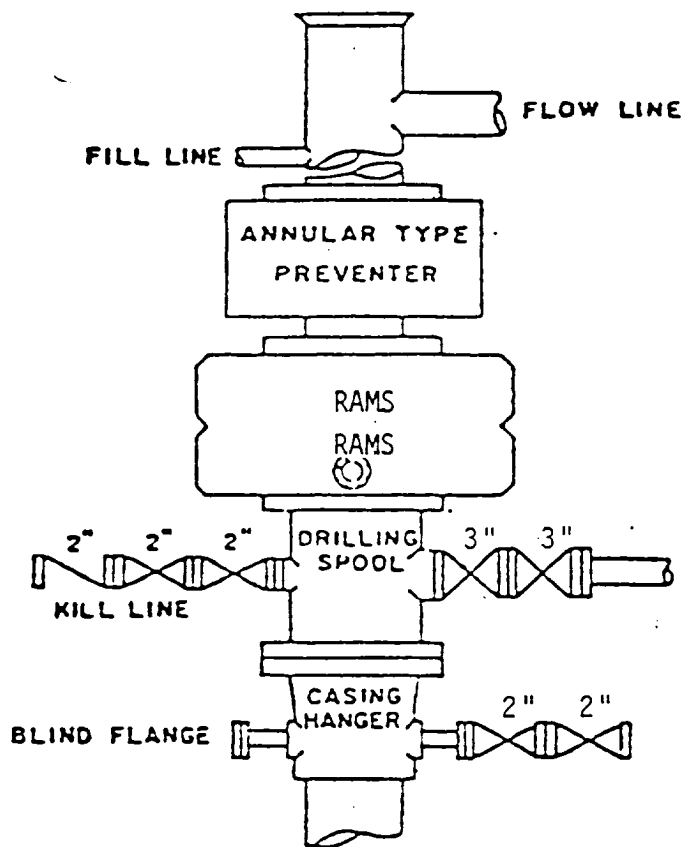
It is planned that operations will commence upon approval of this application, with drilling and completion operations lasting about 65 days.



BOP STACK

3000 PSI WORKING PRESSURE

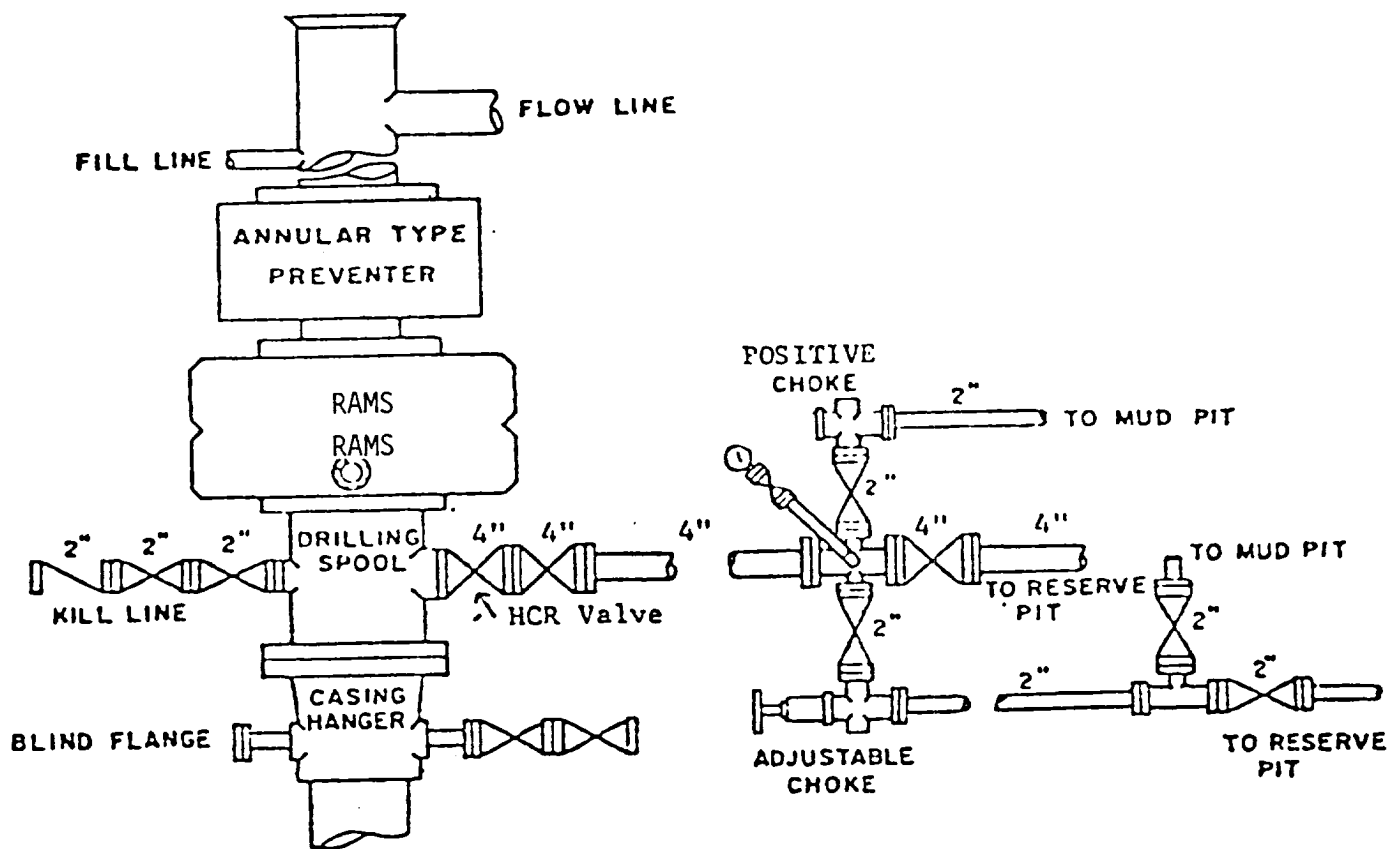
BOP ARRANGEMENT



BOP STACK

5000 PSI WORKING PRESSURE

BOP ARRANGEMENT



BOP STACK

10,000 PSI WORKING PRESSURE

BOP ARRANGEMENT