

OIL CONSERVATION DIVISION

P.O. Box 2088

Santa Fe, New Mexico 87504-2088

DISTRICT I

P.O. Box 1980, Hobbs, NM 88240

DISTRICT II

P.O. Drawer DD, Artesia, NM 88210

DISTRICT III

1000 Rio Brazos Rd., Aztec, NM 87410

WELL LOCATION AND ACREAGE DEDICATION PLAT

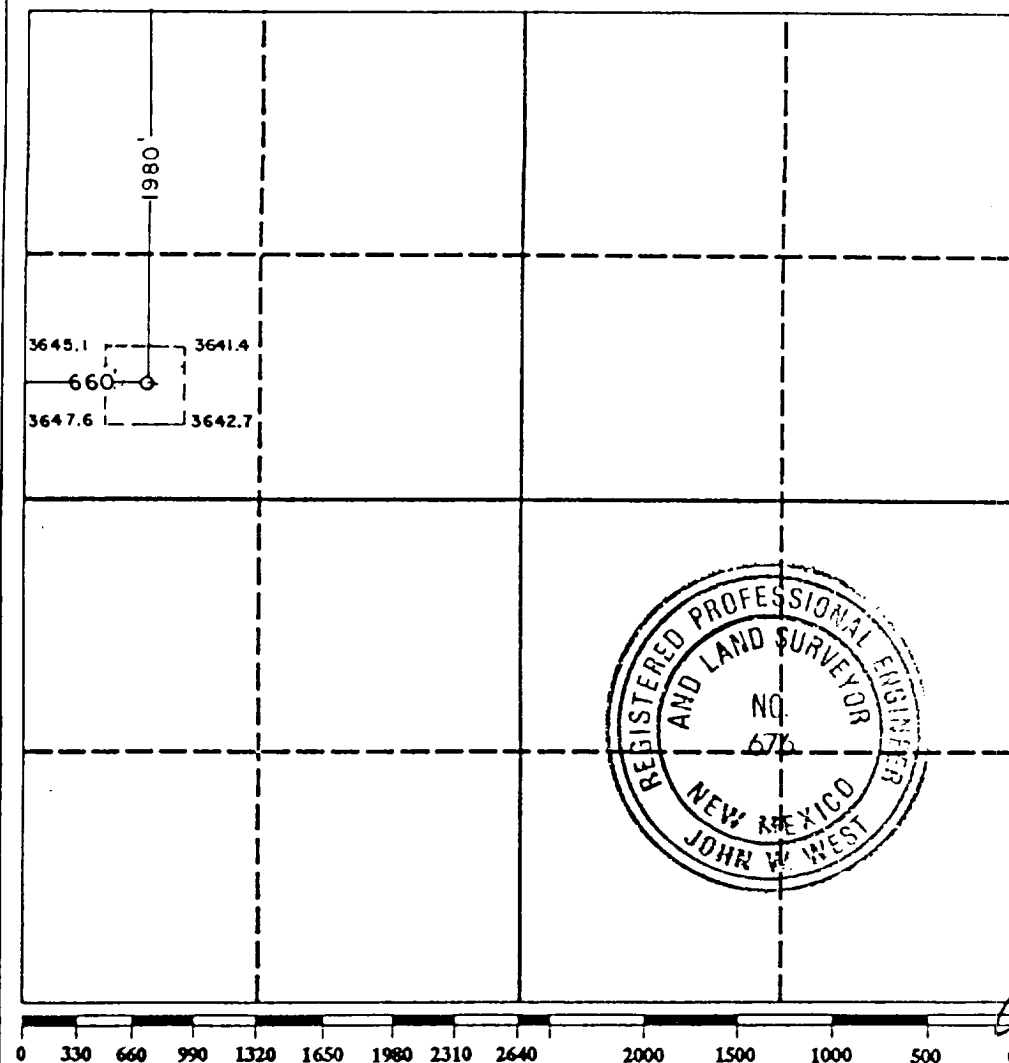
All Distances must be from the outer boundaries of the section

Operator MARALO, INC.			Lease PROHIBITION FEDERAL UNIT		Well No. 1
Unit Letter E	Section 12	Township 22 SOUTH	Range 32 EAST	County LEA	
Actual Footage Location of Well: 660 feet from the WEST line and 1980 feet from the NORTH line					
Ground level Elev. 3645.4	Producing Formation DELAWARE		Pool NORTHWEST BOOTLEG RIDGE 06925		Dedicated Acreage: 40 Acres

1. Outline the acreage dedicated to the subject well by colored pencil or hatchure marks on the plat below.
2. If more than one lease is dedicated to the well, outline each and identify the ownership thereof (both as to working interest and royalty).
3. If more than one lease of different ownership is dedicated to the well, have the interest of all owners been consolidated by communitization, unitization, force-pooling, etc.?
- ☐ Yes ☐ No If answer is "yes" type of consolidation

If answer is "no" list the owners and tract descriptions which have actually been consolidated. (Use reverse side of this form if necessary.)

No allowable will be assigned to the well until all interests have been consolidated (by communitization, unitization, forced-pooling, or otherwise) or until a non-standard unit, eliminating such interest, has been approved by the Division.



OPERATOR CERTIFICATION

I hereby certify that the information contained herein is true and complete to the best of my knowledge and belief.

Signature _____

Donaldis Owens

Printed Name
DOROTHEA OWENS

Position

REGULATORY ANALYST

Company
MARALO, INC.

Date _____

MARCH 17, 1992

SURVEYOR CERTIFICATION

I hereby certify that the well location shown on this plot was plotted from field notes of actual surveys made by me or under my supervision, and that the same is true and correct to the best of my knowledge and belief.

Date Surveyed

12-7-90

Signature & Seal of
Professional Surveyor

		
Certificate No.	JOHN W. WEST,	676
	RONALD J. EIDSON.	3239