

NEW MEXICO OIL CONSERVATION COMMISSION
 V. L LOCATION AND ACREAGE DEDICATION PLAT

Form C-102
 Supersedes C-120
 Effective 1-1-85

All distances must be from the outer boundaries of the Section.

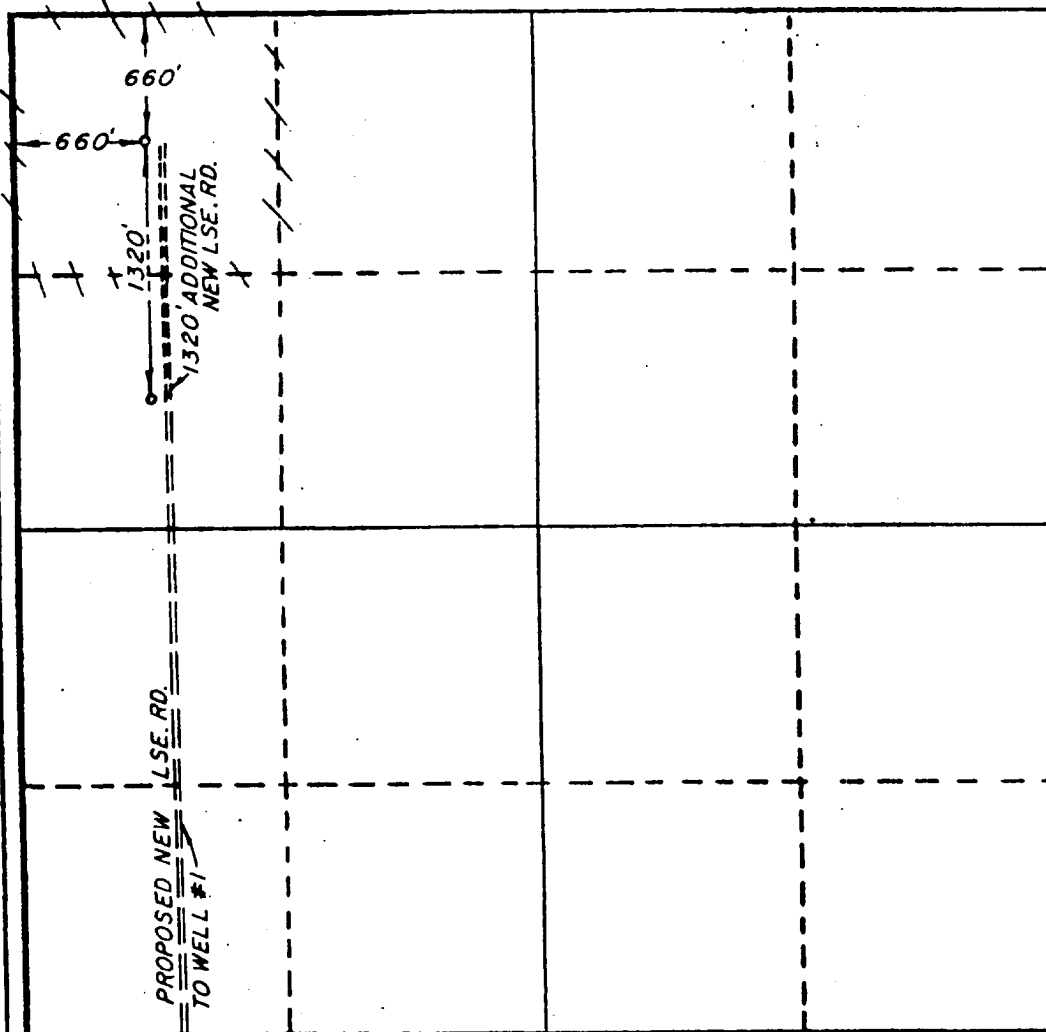
Operator PHILLIPS PETROLEUM COMPANY			Lease LUKE FED		Well No. 2
Unit Letter D	Section 31	Township 21-SOUTH	Range 32-EAST	County LEA	
Actual Footage Location of Wells 660 feet from the NORTH line and 660 feet from the WEST line					
Ground Level Elev. 3672	Producing Formation Delaware		Pool Livingston Ridge (Delaware)		Dedicated Acreage 40 43.62 Acres

1. Outline the acreage dedicated to the subject well by colored pencil or hatchure marks on the plat below.
2. If more than one lease is dedicated to the well, outline each and identify the ownership thereof (both as to working interest and royalty).
3. If more than one lease of different ownership is dedicated to the well, have the interests of all owners been consolidated by communitization, unitization, force-pooling, etc?

☐ Yes ☐ No If answer is "yes," type of consolidation _____

If answer is "no," list the owners and tract descriptions which have actually been consolidated. (Use reverse side of this form if necessary.) _____

No allowable will be assigned to the well until all interests have been consolidated (by communitization, unitization, forced-pooling, or otherwise) or until a non-standard unit, eliminating such interests, has been approved by the Commission.



CERTIFICATION

I hereby certify that the information contained herein is true and complete to the best of my knowledge and belief.

L. M. Sanders
 Name **L. M. Sanders**

Supervisor
 Regulation & Proration

Position
Phillips Petroleum Co.

Company
10/9/91

Date

I hereby certify that the well location shown on this plat was plotted from field notes of actual surveys made by me or under my supervision, and that the same is true and correct to the best of my knowledge and belief.

Date Surveyed
SEPTEMBER 16, 1991

Registered Professional Engineer and/or Land Surveyor

Richard H. Austin
 Certificate No. **4882**

