

Fee Lease-5 copies

Revised 1-1-89

Santa Fe, New Mexico 87504-2088

1000 Rio Brazos Rd., Aztec, Nm 87410

API NO. (assigned by OCD on New Wells)	
30-025-31633	
5. Indicate Type of Lease	
STATE	<input checked="" type="checkbox"/> FEE <input type="checkbox"/>
6. State Oil & Gas Lease No.	
N/A	

APPLICATION FOR PERMIT TO DRILL, DEEPEN, OF PLUG BACK					
1a. Type of Work:			7. Lease Name or Unit Agreement Name		
DRILL <input checked="" type="checkbox"/> RE-ENTER <input type="checkbox"/> DEEPEN <input type="checkbox"/> PLUG BACK <input type="checkbox"/>			ARROWHEAD GRAYBURG UNIT		
b. Type of Well:					
OIL WELL <input checked="" type="checkbox"/> GAS WELL <input type="checkbox"/> OTHER WELL <input type="checkbox"/> SINGLE ZONE <input type="checkbox"/> MULTIPLE ZONE <input type="checkbox"/>					
2. Name of Operator			8. Well No.		
CHEVRON U.S.A. INC.			144		
3. Address of Operator			9. Pool name or Wildcat		
P.O. BOX 1150, MIDLAND, TX 79702 ATTN: P.R. MATTHEWS			ARROWHEAD GRAYBURG		
4. Well Location					
Unit Letter <u>P</u> : <u>330</u> Feet From The <u>SOUTH</u> Line and <u>1147</u> Feet From The <u>EAST</u> Line					
Section <u>36</u> Township <u>21S</u> Range <u>36E</u> NMPM LEA County					
			10. Proposed depth		11. Formation
			4500		GRAYBURG
					12. Rotary or C.T.
					ROTARY
13. Elevation (Show DF, RT, GR, etc.)		14. Kind & Status Plug Bond		15. Drig Contractor	16. Date Work will start
3484 GE		BLANKET		UNKNOWN	7-10-92
17. PROPOSED CASING AND CEMENT PROGRAM					
SIZE OF HOLE	SIZE OF CASING	WEIGHT PER FOOT	SETTING DEPTH	SACKS OF CEMENT	EST. TOP
12 1/4"	8 5/8"	23	1350'	800	SURFACE
7 7/8"	5 1/2"	15.5	4500'	900	SURFACE

CONDITIONS OF APPROVAL, IF ANY:

Submit to Appropriate
District Office
State Lease - 4 copies
Fee Lease - 3 copies

State of New Mexico
Energy, Minerals and Natural Resources Department

Form C-102
Revised 1-1-89

OIL CONSERVATION DIVISION

P.O. Box 2088

Santa Fe, New Mexico 87504-2088

DISTRICT I

P.O. Box 1980, Hobbs, NM 88240

DISTRICT II

P.O. Drawer DD, Artesia, NM 88210

DISTRICT III

1000 Rio Brazos Rd., Aztec, NM 87410

WELL LOCATION AND ACREAGE DEDICATION PLAT

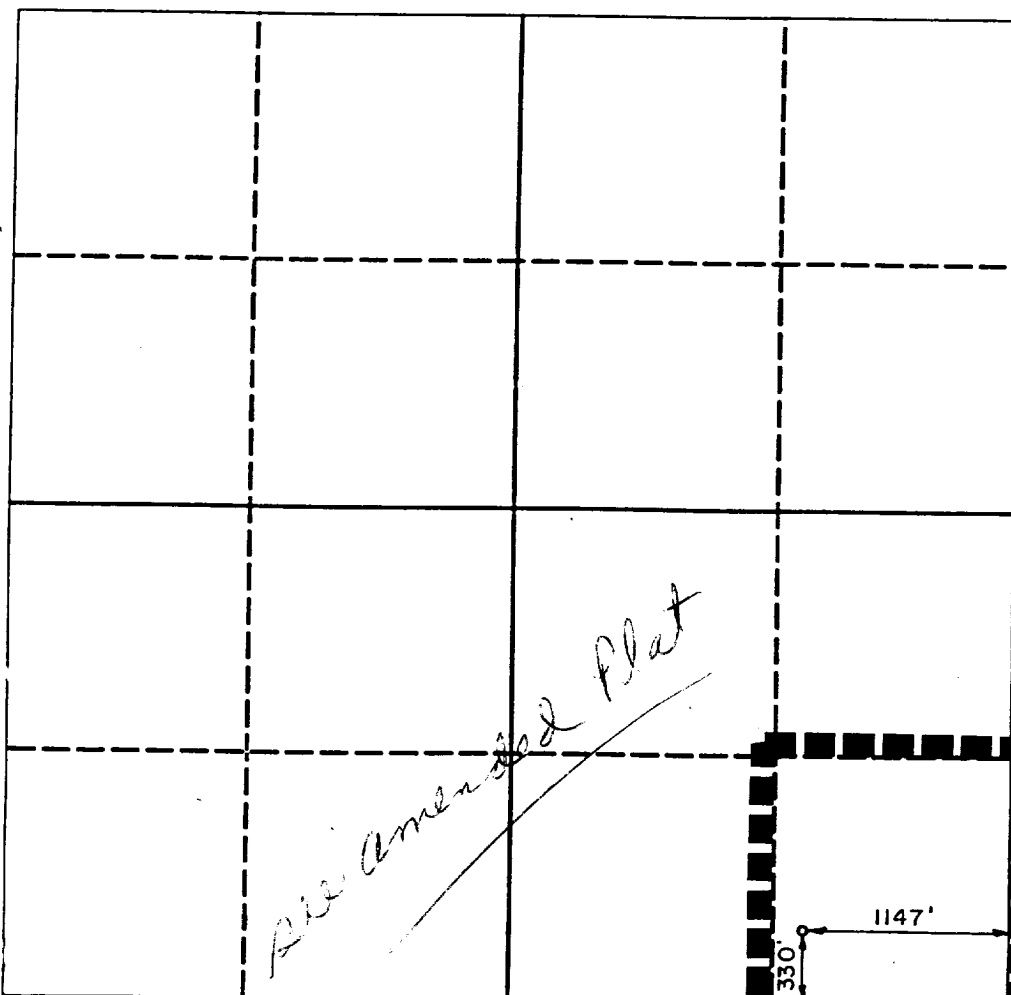
All Distances must be from the outer boundaries of the section

Operator Chevron U.S.A. Inc.			Lease Arrowhead Grayburg Unit		Well No. 144
Unit Letter P	Section 36	Township 21-S	Range 36-E	County Lea	
Actual Footage Location of Well: 330 feet from the South line and 1147 feet from the East line					
Ground level Elev. 3484.7	Producing Formation GRAYBURG		Pool ARROWHEAD / GB		Dedicated Acreage: 40 Acres

1. Outline the acreage dedicated to the subject well by colored pencil or hatchure marks on the plat below.
2. If more than one lease is dedicated to the well, outline each and identify the ownership thereof (both as to working interest and royalty).
3. If more than one lease of different ownership is dedicated to the well, have the interest of all owners been consolidated by communitization, unitization, force-pooling, etc.?
☐ Yes ☐ No If answer is "yes" type of consolidation _____

If answer is "no" list the owners and tract descriptions which have actually been consolidated. (Use reverse side of this form if necessary.) _____

No allowable will be assigned to the well until all interests have been consolidated (by communitization, unitization, forced-pooling, or otherwise) or until a non-standard unit, eliminating such interest, has been approved by the Division.



OPERATOR CERTIFICATION

I hereby certify that the information contained herein is true and complete to the best of my knowledge and belief.

Signature

P.R. Matthews

Printed Name

P.R. MATTHEWS

Position

TECHNICAL ASSISTANT

Company

CHEVRON U.S.A. INC.

Date

6-25-92

SURVEYOR CERTIFICATION

I hereby certify that the well location shown on this plat was plotted from field notes of actual surveys made by me or under my supervision, and that the same is true and correct to the best of my knowledge and belief.

Date Surveyed

June 20, 1992

Signature & Seal of
Professional Surveyor

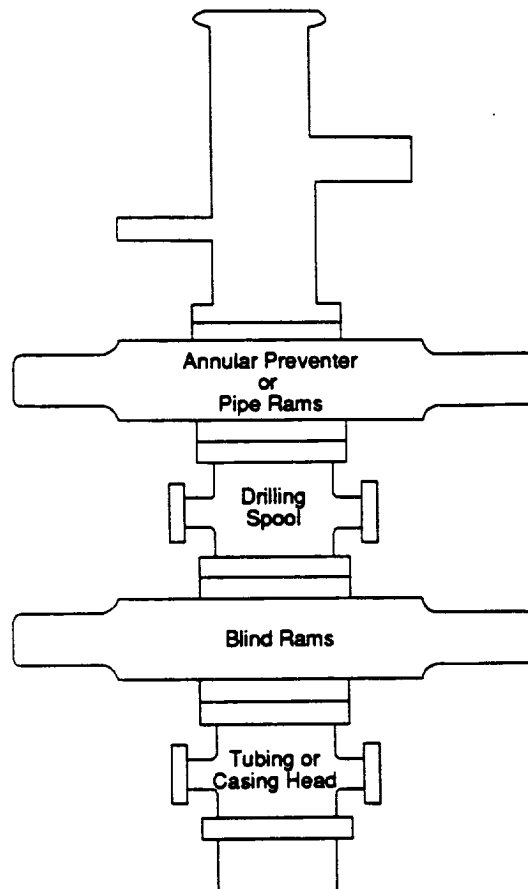
Ronald J. Eidson
Certificate No. JOHN W. WEST 676
RONALD J. EIDSON 3239

92-11-0776

CHEVRON DRILLING REFERENCE SERIES
VOLUME ELEVEN
WELL CONTROL AND BLOWOUT PREVENTION

D. CLASS II-B BLOWOUT PREVENTER STACK:

Figure 11J.3
Class II-B Blowout Preventer Stack



The Class II-B preventer stack is designed for drilling or workover operations. It is composed of a single hydraulically operated annular preventer on top, then a drilling spool, and a single blind ram preventer on bottom. In an alternate configuration, a single pipe ram preventer may be substituted for the annular preventer. The choke and kill lines are installed onto the drilling spool and must have a minimum internal diameter of 2". An emergency kill line may be installed on the wellhead. As the maximum anticipated surface pressure of this stack is less than 2000 psi, screwed connections may be used. All components must be of steel construction. The Class II-B blowout preventer stack is shown to the left in Figure 11J.3.

CHEVRON DRILLING REFERENCE SERIES
VOLUME ELEVEN
WELL CONTROL AND BLOWOUT PREVENTION

C. CLASS II CHOKE MANIFOLD

The Class II choke manifold is suitable for all Class II workovers and drilling operations. The Class II choke manifold is shown below in Figure 11J.7. Specific design features of the Class II choke manifold include:

1. The manifold is attached to the tubing/casing head when a Class II-A preventer stack is used. This hook-up is only recommended for Class II workover operations.
2. The manifold is attached to a drilling spool or top ram preventer side outlets when a Class II-B preventer stack is in use.
3. The minimum internal diameter is 2" (nominal) for outlets, flanges, valves and pipes.
4. Includes two steel gate valves in the choke line at the wellhead/drilling spool outlet. The inside choke line valve may be remotely controlled (HCR).
5. Includes one manually adjustable choke which is installed on the side of the manifold cross. Steel isolation gate valves are installed between the choke and the cross, and downstream of the choke.
6. Includes one bleed line installed on the side of the manifold cross which is isolated by a steel gate valve.
7. Includes a pressure gauge suitable for drilling service which can display the casing pressure within view of the choke operator.
8. Screwed connections may be used in lieu of flanges or clamps.

