

District I  
PO Box 1980, Hobbs. NM 88241-1980

District II  
PO Drawer DD, Artesia, NM 88211-0719

District III  
1000 Rio Brazos Rd. Aztec, NM 87410

District IV  
PO Box 2088, Santa Fe. NM 87504-2088

State of New Mexico  
Energy, Minerals & Natural Resources Department

OIL CONSERVATION DIVISION  
PO Box 2088  
Santa Fe, NM 87504-2088

Form C-102

Revised February 21, 1994

Instructions on back

Submit to Appropriate District Office

State Lease - 4 Copies

Fee Lease - 3 Copies

☐ AMENDED REPORT

WELL LOCATION AND ACREAGE DEDICATION PLAT

API Number 30-025-31979		2 Pool Code 76480		3 Pool Name Eumont Yates-Seven Rivers-Queen (Pro Gas)	
4 Property Code 18655		5 Property Name Lockhart B COM			6 Well Number #11
7 OGRID No. 005073		8 Operator Name Conoco Inc., 10 Desta Drive, Ste. 100W, Midland, TX 79705-4500			9 Elevation

10 Surface Location

UL or lot no. A	Section 14	Township 21S	Range 36E	Lot Idn	Feet from the 760'	North/South line North	Feet from the 660'	East/West line East	County Lea
--------------------	---------------	-----------------	--------------	---------	-----------------------	---------------------------	-----------------------	------------------------	---------------

11 Bottom Hole Location If Different From Surface

UL or lot no.	Section	Township	Range	Lot Idn	Feet from the	North/South line	Feet from the	East/West line	County
---------------	---------	----------	-------	---------	---------------	------------------	---------------	----------------	--------

12 Dedicated Acres 480	13 Joint or Infill	14 Consolidation Code	15 Order No.
---------------------------	--------------------	-----------------------	--------------

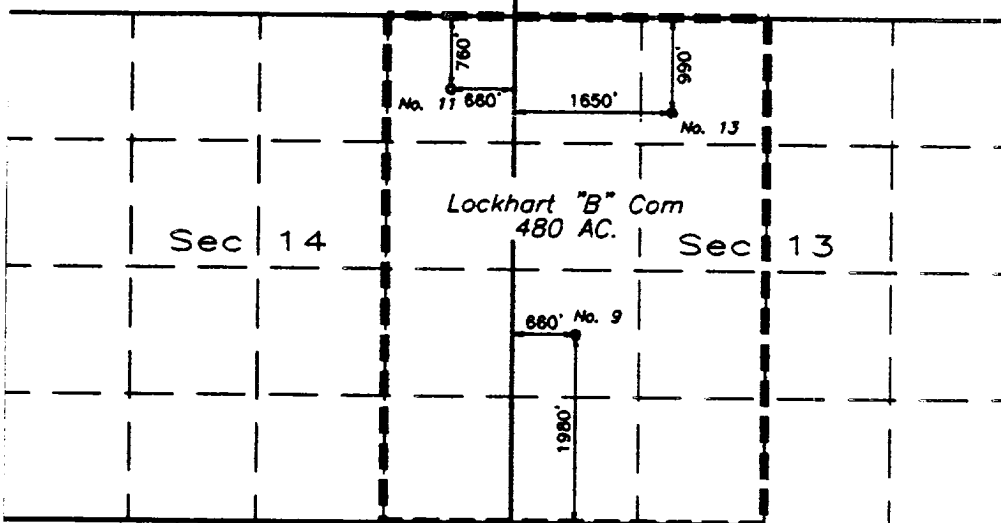
NO ALLOWABLE WILL BE ASSIGNED TO THIS COMPLETION UNTIL ALL INTERESTS HAVE BEEN CONSOLIDATED  
OR A NON-STANDARD UNIT HAS BEEN APPROVED BY THE DIVISION

T-21-S

R-36-E

Sec 11

Sec 12



17 OPERATOR CERTIFICATION

I hereby certify that the information contained herein is true and complete to the best of my knowledge and belief

*Kay Maddox*  
Signature

Kay Maddox

Printed Name

Regulatory Agent

Title

October 29, 1998

Date

18 SURVEYOR CERTIFICATION

I hereby certify that the well location shown on this plat was plotted from field notes of actual surveys made by me or under my supervision, and that the same is true and correct to the best of my belief.

Date of Survey

Signature and Seal of Professional Surveyor:

Certificate Number

Sec 23

Sec 24

SCALE: 1" = 2000'