

OIL CONSERVATION DIVISION

P.O. Box 2088

Santa Fe, New Mexico 87504-2088

SIMULTANEOUS
DEDICATED

DISTRICT I

P.O. Box 1980, Hobbs, NM 88240

DISTRICT II

P.O. Drawer DD, Artesia, NM 88210

DISTRICT III

1000 Rio Brazos Rd., Aztec, NM 87410

WELL LOCATION AND ACREAGE DEDICATION PLAT

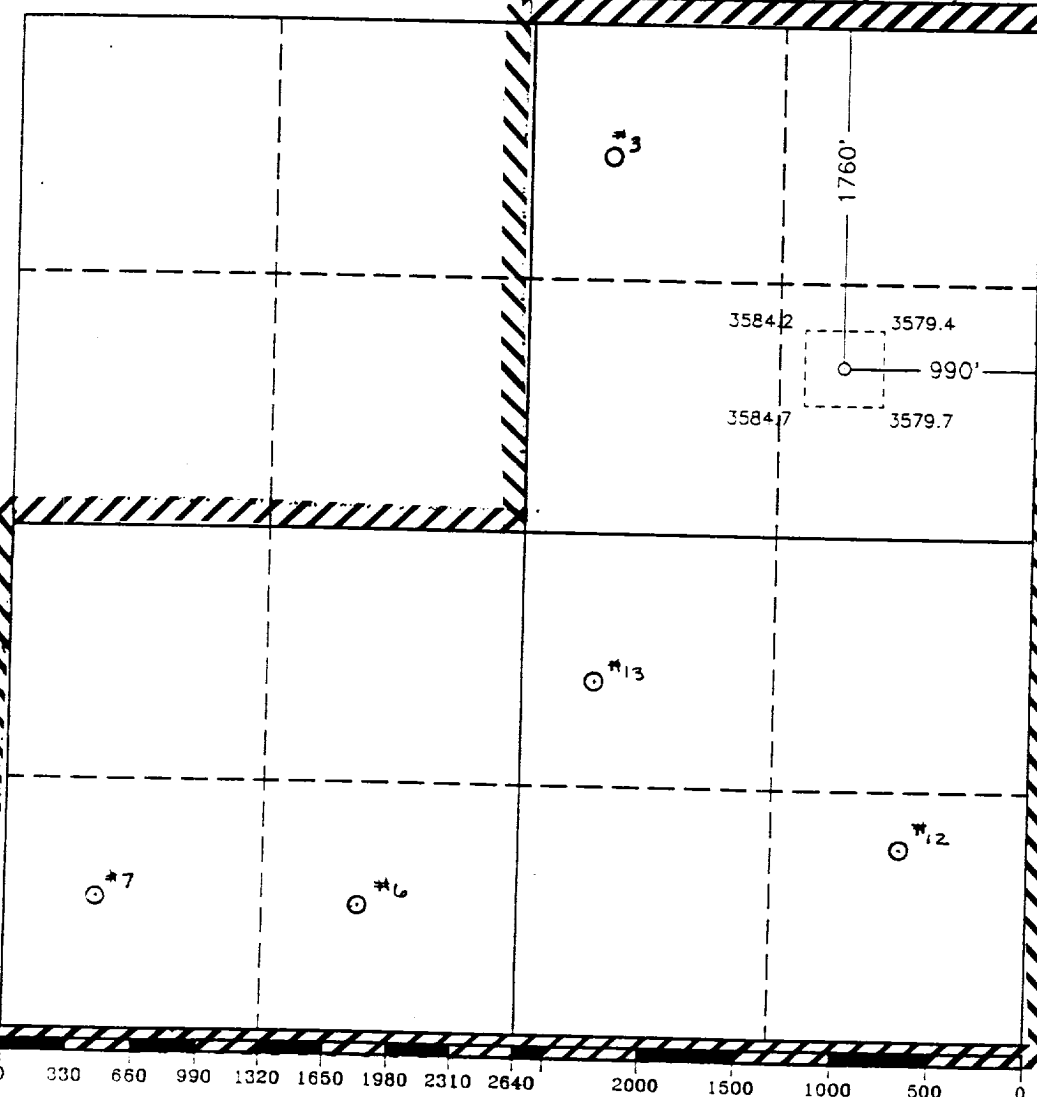
All Distances must be from the outer boundaries of the section

Operator CHEVRON U.S.A. INC.		Lease HARRY LEONARD NCT "A"		Well No. 14
Unit Letter H	Section 22	Township 21 SOUTH	Range 36 EAST NMPM	County LEA
Actual Footage Location of Well: 760 feet from the NORTH line and 990 feet from the EAST line				
Ground Level Elev. 3583.0	Producing Formation QUEEN/PENROSE/SR/YATES	Pool EUMONT GAS	Dedicated Acreage: 480 Acres	

- Outline the acreage dedicated to the subject well by colored pencil or hachure marks on the plat below.
- If more than one lease is dedicated to the well, outline each and identify the ownership thereof (both as to working interest and royalty).
- If more than one lease of different ownership is dedicated to the well, have the interest of all owners been consolidated by communitization, unitization, force-pooling, etc.?
☐ Yes ☐ No If answer is "yes" type of consolidation _____

If answer is "no" list of owners and tract descriptions which have actually been consolidated. (Use reverse side of this form necessary.)

No allowable will be assigned to the well unit all interests have been consolidated (by communitization, unitization, forced-pooling, otherwise) or until a non-standard unit, eliminating such interest, has been approved by the Division.



OPERATOR CERTIFICATION

I hereby certify the the information contained herein is true and complete to the best of my knowledge and belief.

Signature

Printed Name
P.R. MATTHEWS

Position
TECHNICAL ASSISTANT

Company
CHEVRON U.S.A. INC.

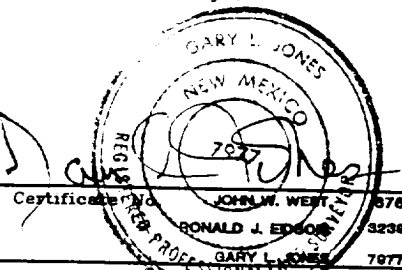
Date
7-28-93

SURVEYOR CERTIFICATION

I hereby certify that the well location shown on this plat was plotted from field notes of actual surveys made by me or under my supervision, and that the same is true and correct to the best of my knowledge and belief.

Date Surveyed
JULY 6, 1993

Signature & Seal of
Professional Surveyor



Certificate No. 3239
JOHN W. WEST 378
RONALD J. EDSON 3239
GARY L. JONES 7977

93-122