

# OIL CONSERVATION DIVISION

P.O. Box 2088  
Santa Fe, New Mexico 87504-2088

**DISTRICT I**  
P.O. Box 1980, Hobbs, NM 88240

**DISTRICT II**  
P.O. Drawer DD, Artesia, NM 88210

**DISTRICT III**  
1000 Rio Brazos Rd., Aztec, NM 87410

## WELL LOCATION AND ACREAGE DEDICATION PLAT

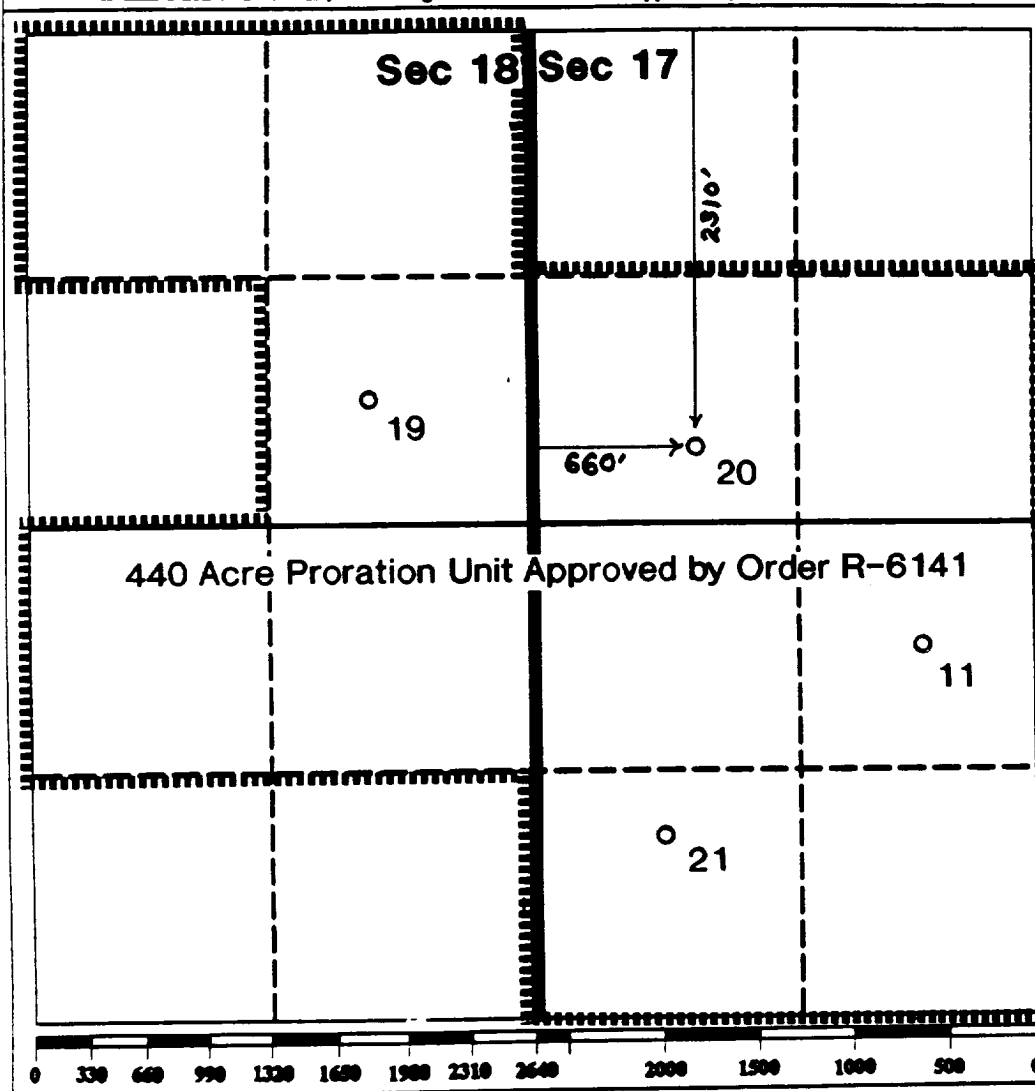
All Distances must be from the outer boundaries of the section

Operator Conoco, Inc.			Lease Meyer A-1		Well No. 20
Unit Letter E	Section 17	Township 21S	Range 36E	County Lea	

### Actual Footage Location of Well:

2310	feet from the	North	line and	760	feet from the	West	line
Ground level Elev. 3649.8'	Producing Formation Queen		Pool Eumont Gas		Dedicated Acreage: 440		Acres

- Outline the acreage dedicated to the subject well by colored pencil or hectare marks on the plat below.
- If more than one lease is dedicated to the well, outline each and identify the ownership thereof (both as to working interest and royalty).
- If more than one lease of different ownership is dedicated to the well, have the interest of all owners been consolidated by communitization, unitization, force-pooling, etc.?  
☐ Yes ☐ No If answer is "yes" type of consolidation \_\_\_\_\_  
If answer is "no" list the owners and tract descriptions which have actually been consolidated. (Use reverse side of this form if necessary).  
No allowable will be assigned to the well until all interests have been consolidated (by communitization, unitization, forced-pooling, or otherwise) or until a non-standard unit, eliminating such interest, has been approved by the Division.



### OPERATOR CERTIFICATION

I hereby certify that the information contained herein is true and complete to the best of my knowledge and belief.

Signature  
*Verry W. Hoover*  
Printed Name  
Verry W. Hoover  
Position  
Sr. Conservation Coord.  
Company  
Conoco, Inc.  
Date  
3/15/94

### SURVEYOR CERTIFICATION

I hereby certify that the well location shown on this plat was plotted from field notes of actual surveys made by me or under my supervision, and that the same is true and correct to the best of my knowledge and belief.

Date Surveyed  
Signature & Seal of Professional Surveyor  
Certificate No.