

# OIL CONSERVATION DIVISION

DISTRICT I  
P.O. Box 1980, Hobbs, NM 88240

P.O. Box 2088  
Santa Fe, New Mexico 87504-2088

DISTRICT II

P.O. Drawer DD, Artesia, NM 88210

DISTRICT III

1000 Rio Brazos Rd., Aztec, NM 87410

# WELL LOCATION AND ACREAGE DEDICATION PLAT

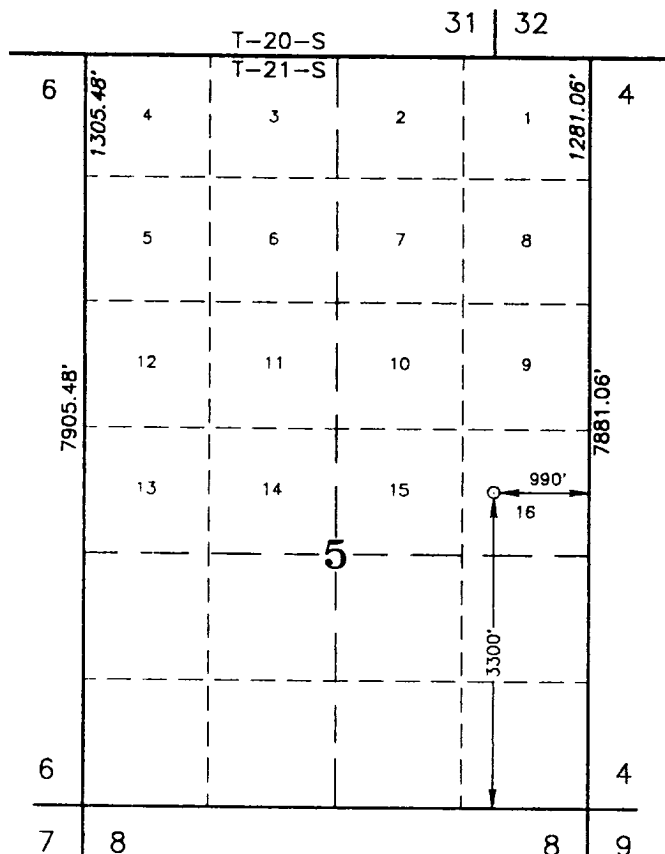
All Distances must be from the outer boundaries of the section

Operator ARCO OIL & GAS COMPANY		Lease STATE "H"		Well No. 6
Unit Letter P	Section 5	Township 21 SOUTH	Range 36 EAST NMPM	County LEA
Actual Footage Location of Well:				
3300 feet from the SOUTH line and 990 feet from the EAST line				
Ground Level Elev. 3585.1'	Producing Formation Yates / SR / Queen	Pool Eumont		Dedicated Acreage: 160 Acres

1. Outline the acreage dedicated to the subject well by colored pencil or hatchure marks on the plat below.
2. If more than one lease is dedicated to the well, outline each and identify the ownership thereof (both as to working interest and royalty).
3. If more than one lease of different ownership is dedicated to the well, have the interest of all owners been consolidated by communitization, unitization, force-pooling, etc.?
- ☐ Yes      ☐ No      If answer is "yes" type of consolidation

If answer is "no" list of owners and tract descriptions which have actually been consolidated. (Use reverse side of this form necessary.)

No allowable will be assigned to the well unit all interests have been consolidated (by communitization, unitization, forced-pooling, otherwise) or until a non-standard unit, eliminating such interest, has been approved by the Division.



SCALE : 1"=2000'

### OPERATOR CERTIFICATION

I hereby certify the the information  
contained herein is true and complete to the  
best of my knowledge and belief.

Signature \_\_\_\_\_

Kandy Kennel

Printed Name \_\_\_\_\_

Printed Name: Randy Reynolds

**Position**

Sr. 'Dr.'g. Engineer

Company

ARCO Oil & Gas

Date \_\_\_\_\_

9/30/93

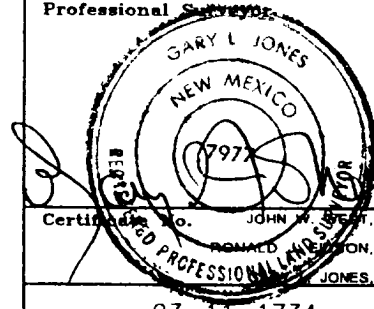
### SURVEYOR CERTIFICATION

I hereby certify that the well location shown on this plat was plotted from field notes of actual surveys made by me or under my supervision, and that the same is true and correct to the best of my knowledge and belief.

Date Surveyed

SEPTEMBER 15, 1993

Signature & Seal of  
Professional Surveyor



Certificate No.	JOHN W. BEATT,	676
	RONALD ELLISON,	3239
	JONES,	7977

93-11-1734