



STATE OF NEW MEXICO
ENERGY, MINERALS AND NATURAL RESOURCES DEPARTMENT

OIL CONSERVATION DIVISION
HOBBS DISTRICT OFFICE

BRUCE KING
GOVERNOR

2-23-84

POST OFFICE BOX 1980
HOBBS, NEW MEXICO 88241-1980
(505) 393-6161

OIL CONSERVATION DIVISION
P. O. BOX 2088
SANTA FE, NEW MEXICO 87501

RE: Proposed:

MC	_____
DHC	_____
NSL	_____ X _____
NSP	_____
SWD	_____
WFX	_____
PMX	_____

Gentlemen:

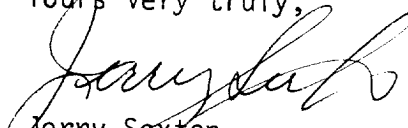
I have examined the application for the:

Chevron USA Inc Arnett Ramsey NT-C #17-L 21-21-36
Operator Lease & Well No. Unit S-T-R

and my recommendations are as follows:

OK

Yours very truly,


Jerry Sexton
Supervisor, District 1

/ed



February 7, 1994
Midland, Texas

Chevron U.S.A. Production Company
P.O. Box 1150
Midland, TX 79702

Administrative Application for Unorthodox
Well Location and Simultaneous Dedication
Eumont (Pro Gas) Pool
1830' FSL AND 600' FWL
Section 21, T-21-S, R-36-E
Lea County, New Mexico

State of New Mexico
Energy, Minerals & Natural Resources Dept.
Oil Conservation Division
P. O. Box 2088
Santa Fe, New Mexico 87504

Attn.: Mr. William J. LeMay -- Director

Gentlemen:

Chevron U.S.A. Inc. respectfully requests your approval of this administrative application for the subject Unorthodox Gas Well Location and Simultaneous Dedication.

Chevron is planning to drill and complete the **Arnott Ramsay (NCT-C) Well No. 17** in the Eumont Yates 7 Rvrs Qn (Pro Gas) Pool. It is also our desire to simultaneously dedicate the existing 640-acre Eumont Gas Proration Unit currently assigned to our Arnott Ramsay (NCT-C) Well Nos. 5, 13, 15 and 16 [Administrative Order NSL-3007-B(SD)] to all five wells. The 640-acre gas proration unit comprises all of Section 21, Township 21 South, Range 36 East, Lea County, New Mexico.

As a result, the proposed location for the Arnott Ramsay (NCT-C) Well No. 17 is unorthodox in that it is less than the required distance from the outer boundary of the proration unit. The location of Well No. 17 is 1830 feet FSL and 600 feet FWL, Unit Letter L, Section 21, Township 21 South, Range 36 East, Lea County, New Mexico.

In order to prevent waste, Chevron respectfully requests your approval of this administrative application for an unorthodox gas well location and simultaneous dedication. Attached is a

Eumont (Pro Gas) Pool
Section 21, T21S, R36E
Lea County, New Mexico

-2-

February 7, 1994

map showing offset operators and a Form C-102 plat. A copy of this letter and attachments are being furnished by Certified Mail to offset operators as their notice of this application.

If you have any questions or require any further information concerning this application, please contact me at (915) 687-7246.

Yours very truly,



A. W. Bohling
Petroleum Engineer

/tmdr
11939.DOC

Attachments

cc: NMOCD -- Hobbs, NM

CHEVRON U.S.A. INC.
Arnott Ramsay (NCT-C) Lease
Well No. 17

Unorthodox Location and
Simultaneous Dedication Application
Eumont (Pro Gas) Pool
1830' FSL and 600' FWL
Section 21, T-21-S, R-36-E
Lea County, New Mexico

OFFSET OPERATORS

Amoco Production Company
501 Westlake Park Blvd.
Houston, Texas 77079

Citation Oil and Gas Corporation
8223 Willow Place South, Ste. 250
Houston, Texas 77070

Conoco Incorporated
10 Desta Drive, Ste. 100W
Midland, Texas 79705

Doyle Hartman
P. O. Box 10426
Midland, Texas 79702

John Hendrix Corporation
223 W. Wall, Ste. 525
Midland, Texas 79701

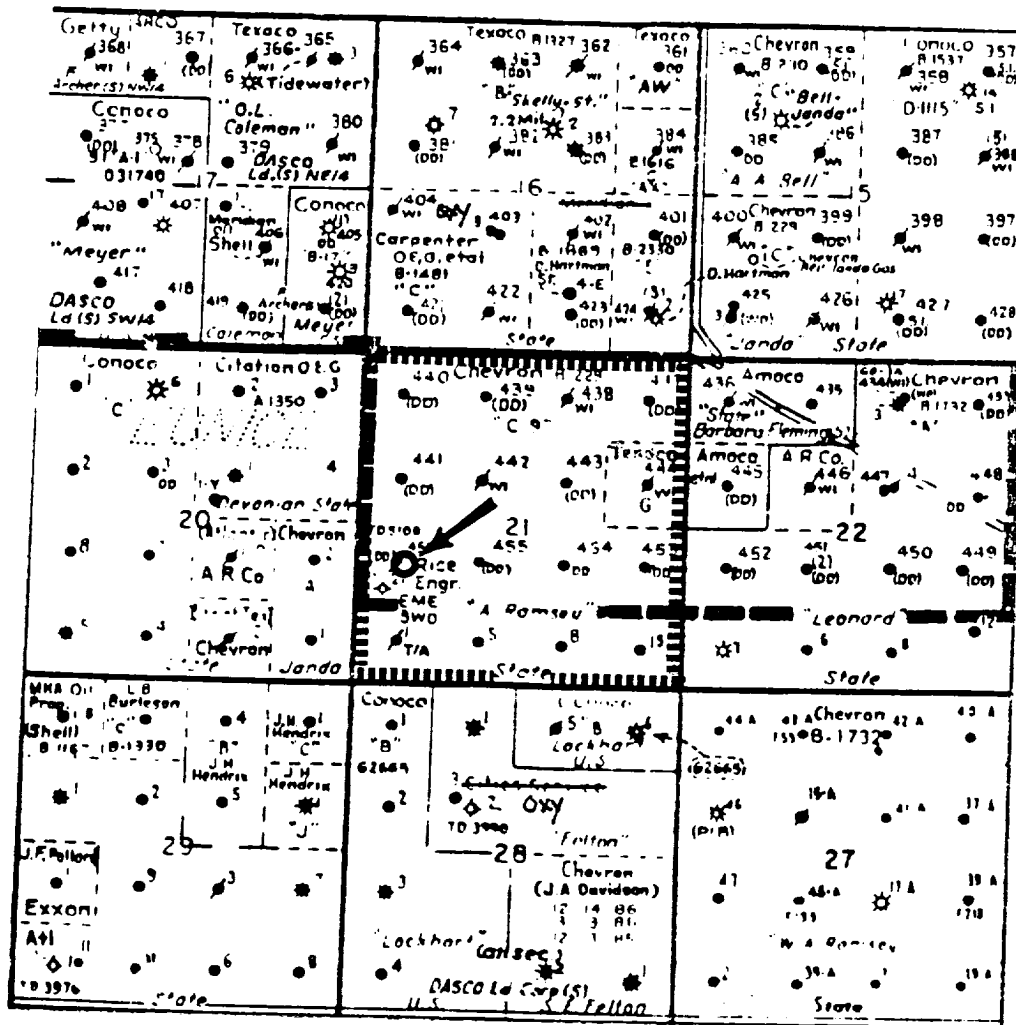
Oxy U. S. A. Incorporated
P. O. Box 50250
Midland, Texas 79710

Texaco Exploration & Production, Inc.
P. O. Box 730
Hobbs, New Mexico 88240-0730

CHEVRON U.S.A. INC.
Arnett Ramsay (NCT-C) Lease
Well No. 17

Unorthodox Location and
Simultaneous Dedication Application
Eumont (Pro Gas) Pool
1830' FSL and 600' FWL
Section 21, T-21-S, R-36-E
Lea County, New Mexico

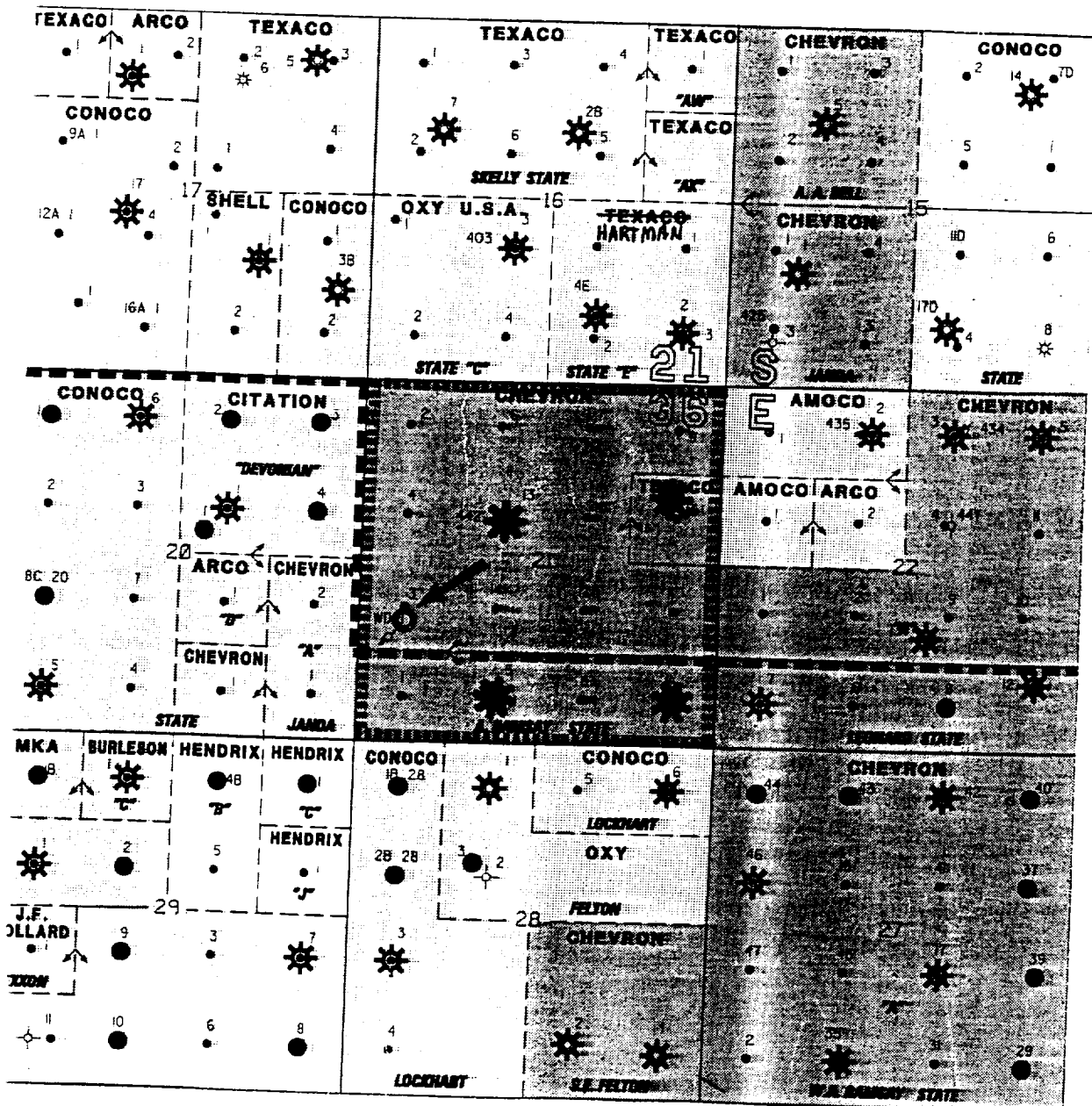
COMMERCIAL MAP



CHEVRON U.S.A. INC.
Arnott Ramsay (NCT-C) Lease
Well No. 17

Unorthodox Location and
Simultaneous Dedication Application
Eumont (Pro Gas) Pool
1830' FSL and 600' FWL
Section 21, T-21-S, R-36-E
Lea County, New Mexico

PRORATION UNIT MAP



Submit to Appropriate
District Office
State Leases - 4 copies
Fee Leases - 3 copies

State of New Mexico
Energy, Minerals and Natural Resources Department

Form C-102
Revised 1-1-89

OIL CONSERVATION DIVISION

P.O. Box 2088
Santa Fe, New Mexico 87504-2088

DISTRICT I
P.O. Box 1983, Hobbs, NM 88240

DISTRICT II
P.O. Drawer 80, Aramis, NM 88210

DISTRICT III
1000 Rio Brazos Rd., Aztec, NM 87410

WELL LOCATION AND ACREAGE DEDICATION PLAT

All Distances must be from the outer boundaries of the section

Operator CHEVRON U.S.A.			Lease ARNOTT RAMSAY (NCT-C)		Well No. 17
Unit Letter L	Section 21	Township 21S	Range 36E	County LEA	
Actual Footage Location of Well: 1830 feet from the SOUTH line and 600 feet from the WEST line					
Ground level Elev.		Producing Formation YTS/7-RVRS/QN	Pool EUMONT (PRO GAS)	Dedicated Acreage: 640 Acres	

1. Outline the acreage dedicated to the subject well by colored pencil or hatch marks on the plat below.

2. If more than one lease is dedicated to the well, outline each and identify the ownership thereof (both as to working interest and royalty).

3. If more than one lease of different ownership is dedicated to the well, have the interest of all owners been consolidated by communitization, unitization, force-pooling, etc.?

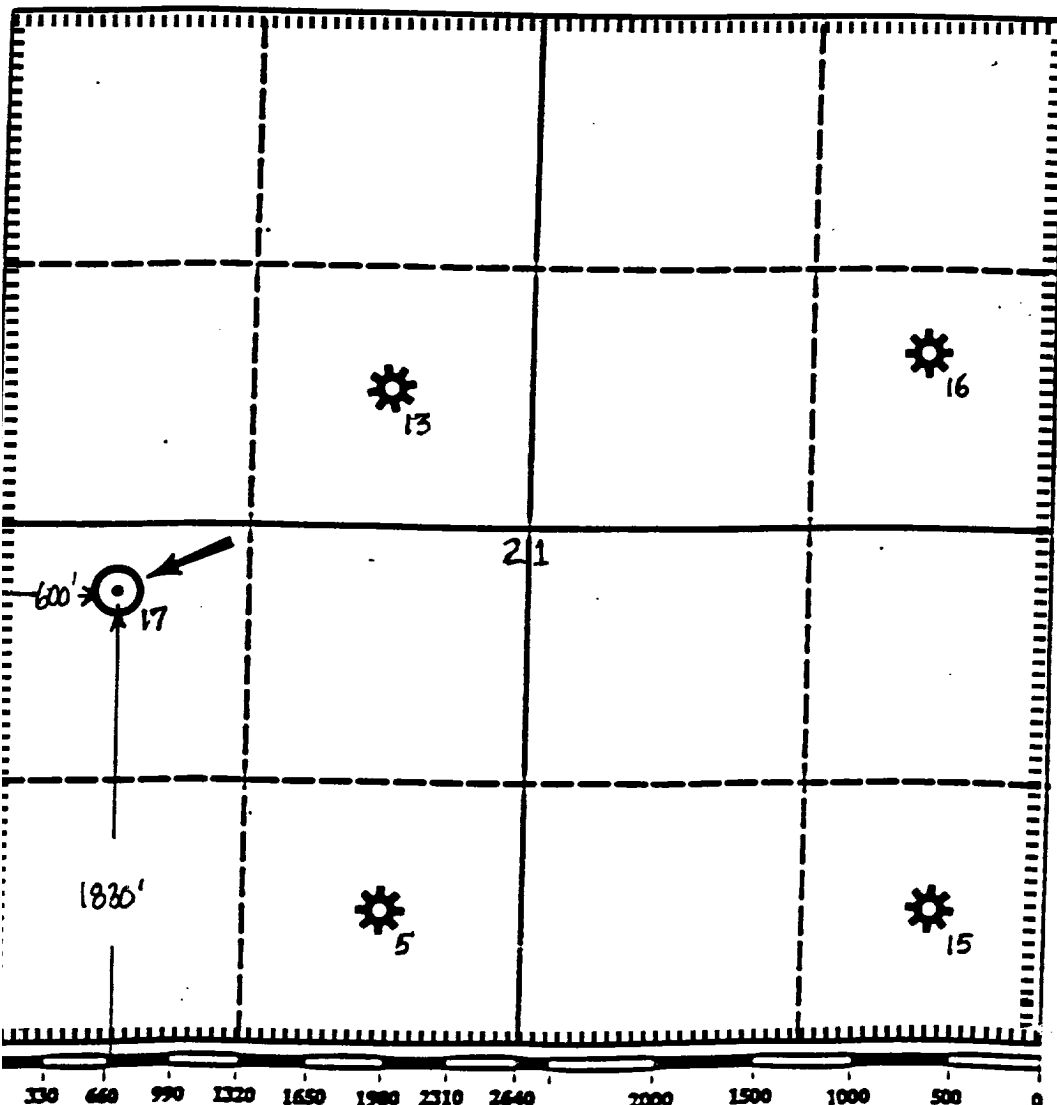
☐ Yes

☐ No

If answer is "yes" type of consolidation

If answer is "no" list the owners and tract descriptions which have actually been consolidated. (Use reverse side of this form if necessary.)

No allowable will be assigned to the well until all interests have been consolidated (by communitization, unitization, forced-pooling, or otherwise) or until a non-standard unit, eliminating such interest, has been approved by the Division.



OPERATOR CERTIFICATION

I hereby certify that the information contained herein is true and complete to the best of my knowledge and belief.

Signature

Alan W. Bohling

Printed Name

ALAN W. BOHLING

Position

PETROLEUM ENGINEER

Company

CHEVRON U.S.A.

Date

FEBRUARY 7, 1994

SURVEYOR CERTIFICATION

I hereby certify that the well location shown on this plat was plotted from field notes of actual surveys made by me or under my supervision, and that the same is true and correct to the best of my knowledge and belief.

Date Surveyed

Signature & Seal of
Professional Surveyor

Certificate No.

Submit to Appropriate
District Office
State Lease - 4 copies
Fee Lease - 3 copies

State of New Mexico
Energy, Minerals and Natural Resources Department

Form C-102
Revised 1-1-89

OIL CONSERVATION DIVISION

P.O. Box 2088

Santa Fe, New Mexico 87504-2088

DISTRICT I
P.O. Box 1980, Hobbs, NM 88240

DISTRICT II
P.O. Drawer DD, Aramis, NM 88210

DISTRICT III
1000 Rio Brazos Rd., Aztec, NM 87410

WELL LOCATION AND ACREAGE DEDICATION PLAT

All Distances must be from the outer boundaries of the section

Operator CHEVRON U.S.A.			Lease ARNOTT RAMSAY (NCT-C)		Well No. 5
Unit Letter N	Section 21	Township 21S	Range 36E	County LEA	
Actual Footings Location of Well: 660 feet from the SOUTH line and 1980 feet from the WEST line					
Ground level Elev.		Producing Formation YT5/7-RVRS/QN	Foot EUMONT (PRO GAS)	Dedicated Acreage 640 Acres	

1. Outline the acreage dedicated to the subject well by colored pencil or ballpoint marker on the plat below.

2. If more than one lease is dedicated to the well, outline each and identify the ownership thereof (both as to working interest and royalty).

3. If more than one lease of different ownership is dedicated to the well, have the interest of all owners been consolidated by communitization, unitization, force-pooling, etc.?

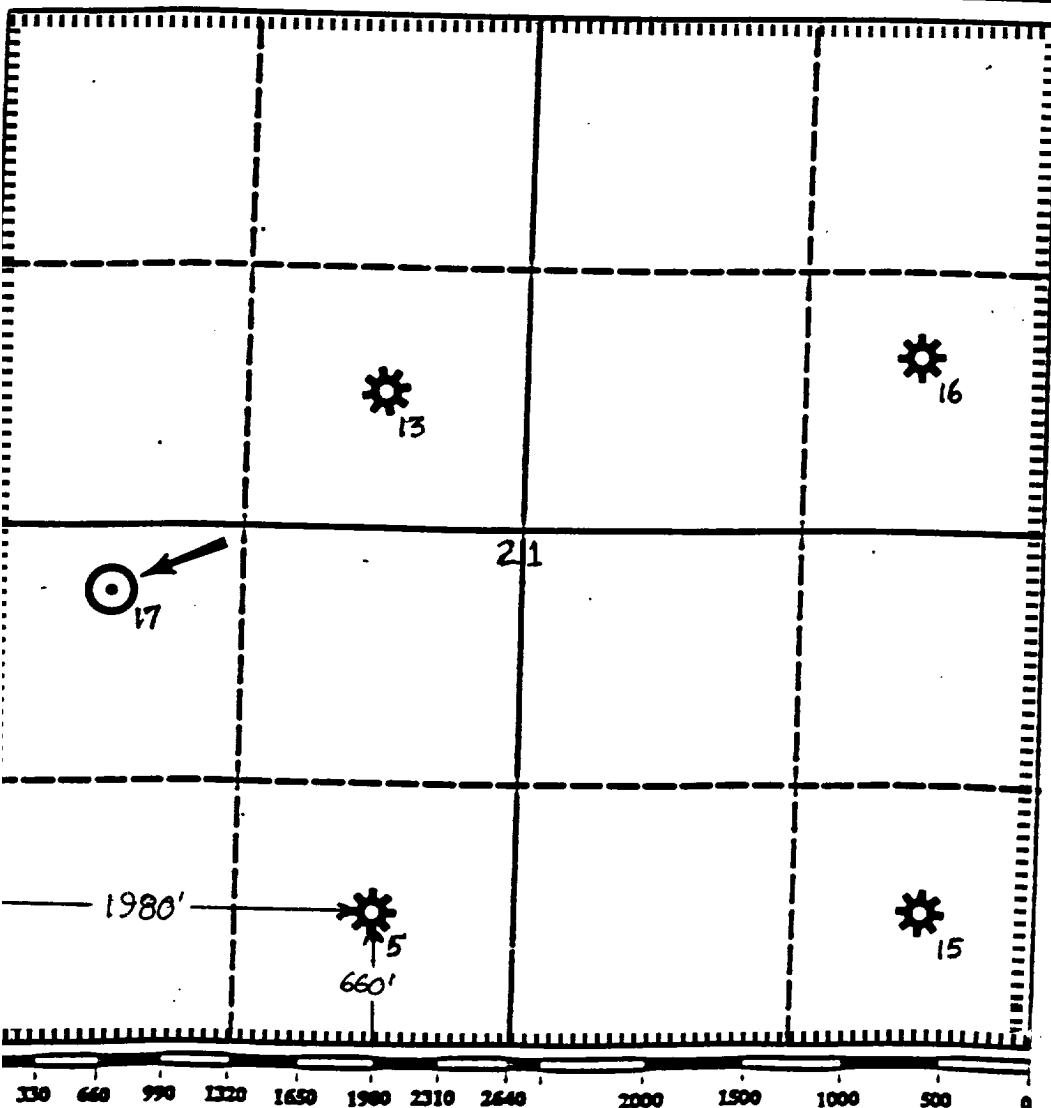
☐ Yes

☐ No

If answer is "yes" type of consolidation

If answer is "no" list the owners and tract descriptions which have actually been consolidated. (Use reverse side of this form if necessary.)

No allowable will be assigned to the well until all interests have been consolidated (by communitization, unitization, force-pooling, or otherwise) or until a non-standard unit, eliminating such interest, has been approved by the Division.



OPERATOR CERTIFICATION

I hereby certify that the information contained herein is true and complete to the best of my knowledge and belief.

Signature

Alan W. Bohling

Printed Name

ALAN W. BOHLING

Position

PETROLEUM ENGINEER

Company

CHEVRON U.S.A.

Date

FEBRUARY 7, 1994

SURVEYOR CERTIFICATION

I hereby certify that the well location shown on this plat was plotted from field notes of actual surveys made by me or under my supervision, and that the same is true and correct to the best of my knowledge and belief.

Date Surveyed

Signature & Seal of
Professional Surveyor

Certificate No.

Submit to Appropriate
District Office
State Lease - 4 copies
Fee Lease - 3 copies

State of New Mexico
Energy, Minerals and Natural Resources Department

Form C-102
Revised 1-1-89

OIL CONSERVATION DIVISION

DISTRICT I
P.O. Box 1983, Hobbs, NM 88240

P.O. Box 2088

Santa Fe, New Mexico 87504-2088

DISTRICT II
P.O. Drawer DD, Aramis, NM 88210

DISTRICT III
1000 Rio Brazos Rd., Aztec, NM 87410

WELL LOCATION AND ACREAGE DEDICATION PLAT

All Distances must be from the outer boundaries of the section

Operator CHEVRON U.S.A.			Lease ARNOTT RAMSAY (NCT-C)		Well No. 13
Unit Letter F	Section 21	Township 21S	Range 36E	County LEA	
Actual Footage Location of Well: 1980 feet from the NORTH line and 1980 feet from the WEST line					
Ground level Elev.		Producing Formation YT5/7-RVRS/QN	Pool EUMONT (PRO GAS)	Dedicated Acreage 640 Acres	

1. Outline the acreage dedicated to the subject well by colored pencil or hatchure marks on the plat below.

2. If more than one lease is dedicated to the well, outline each and identify the ownership thereof (both as to working interest and royalty).

3. If more than one lease of different ownership is dedicated to the well, have the interest of all owners been consolidated by communitization, unitization, force-pooling, etc.?

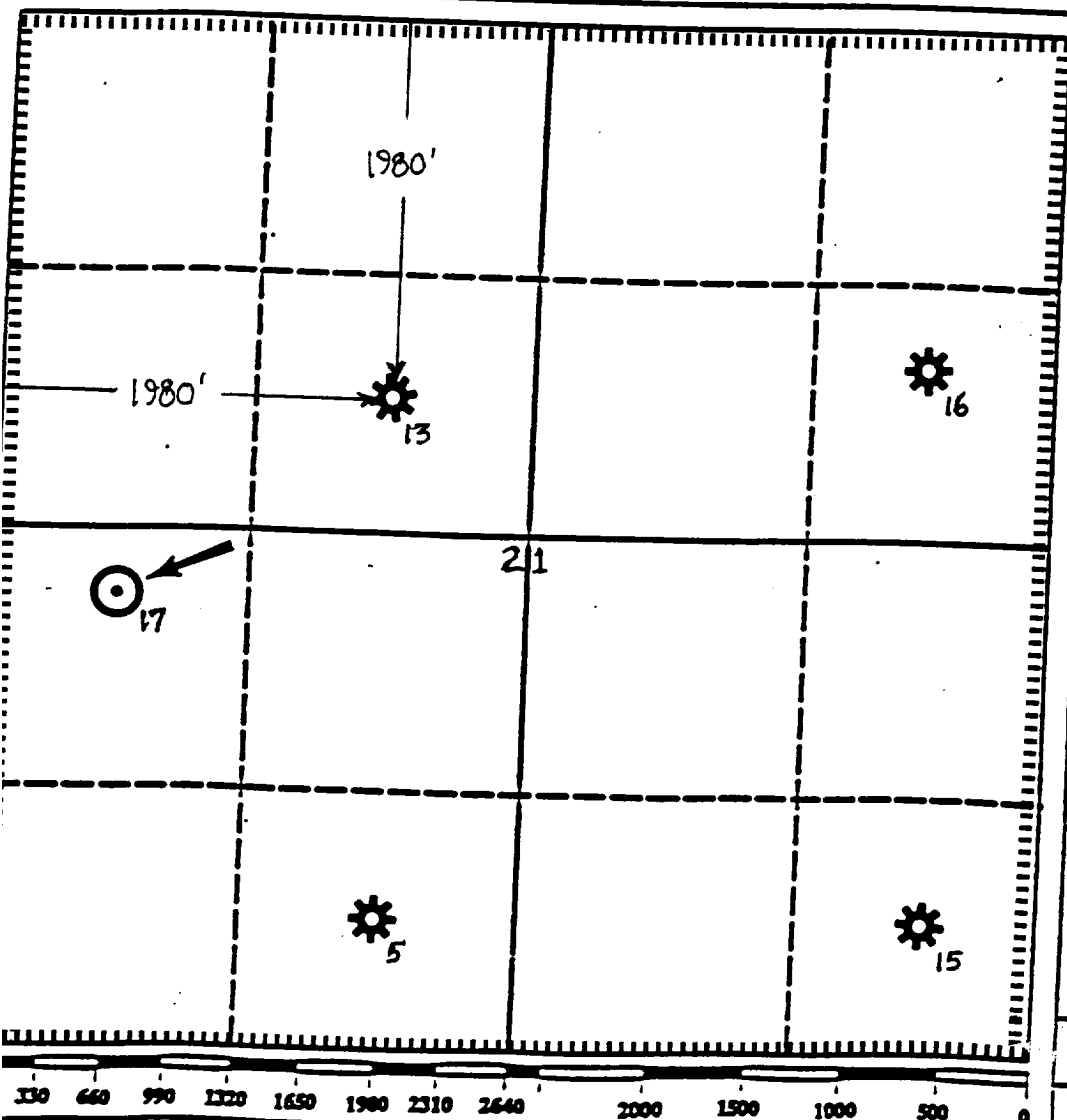
☐ Yes

☐ No

If answer is "yes" type of consolidation

If answer is "no" list the owners and tract descriptions which have actually been consolidated. (Use reverse side of this form if necessary.)

No allowable will be assigned to the well until all interests have been consolidated (by communitization, unitization, force-pooling, or otherwise) or until a non-standard unit, eliminating such interest, has been approved by the Division.



OPERATOR CERTIFICATION

I hereby certify that the information contained herein is true and complete to the best of my knowledge and belief.

Signature

Alan W. Bohling

Printed Name

ALAN W. BOHLING

Position

PETROLEUM ENGINEER

Company

CHEVRON U.S.A.

Date

FEBRUARY 7, 1994

SURVEYOR CERTIFICATION

I hereby certify that the well location shown on this plat was plotted from field notes of actual surveys made by me or under my supervision, and that the same is true and correct to the best of my knowledge and belief.

Date Surveyed

Signature & Seal of
Professional Surveyor

Certificate No.

Submit to Appropriate
District Office
State Lease - 4 copies
Fee Lease - 3 copies

State of New Mexico
Energy, Minerals and Natural Resources Department

Form C-102
Revised 1-1-89

OIL CONSERVATION DIVISION

P.O. Box 2088

Santa Fe, New Mexico 87504-2088

DISTRICT I

P.O. Box 1980, Hobbs, NM 88240

DISTRICT II

P.O. Drawer 212, Aramis, NM 88210

DISTRICT III

1000 Rio Brazos Rd., Aztec, NM 87410

WELL LOCATION AND ACREAGE DEDICATION PLAT

All Distances must be from the outer boundaries of the section

Operator CHEVRON U.S.A.			Lease ARNOTT RAMSAY (NCT-C)		Well No. 15
Utz Letter P	Section 21	Township 21S	Range 36E	County LEA	
Actual Footage Location of Well: 660 feet from the SOUTH line and 660 feet from the EAST line					
Ground level Elev. YTS/7-RVRS/QN		Pool EUMONT (PRO GAS)		Dedicated Acreage 640 Acres	

1. Outline the acreage dedicated to the subject well by colored pencil or ballpoint marks on the plat below.

2. If more than one lease is dedicated to the well, outline each and identify the ownership thereof (both as to working interest and royalty).

3. If more than one lease of different ownership is dedicated to the well, have the interest of all owners been consolidated by communitization, unitization, force-pooling, etc.?

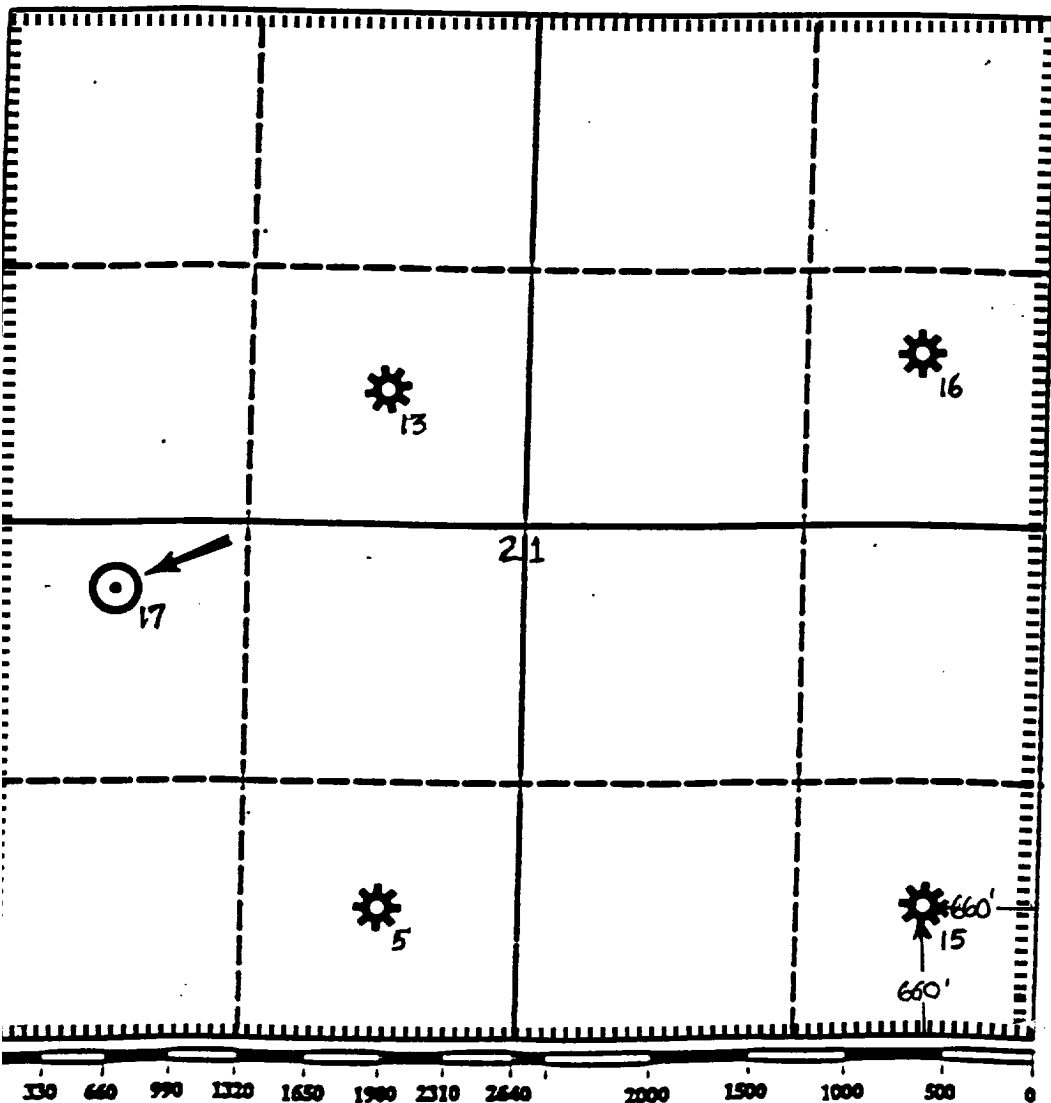
☐ Yes

☐ No

If answer is "yes" type of consolidation

If answer is "no" list the owners and tract descriptions which have actually been consolidated. (Use reverse side of this form if necessary.)

No allowable will be assigned to the well until all interests have been consolidated (by communitization, unitization, forced-pooling, or otherwise) or until a non-standard unit, eliminating such interest, has been approved by the Division.



OPERATOR CERTIFICATION

I hereby certify that the information contained herein is true and complete to the best of my knowledge and belief.

Signature

Alan W. Bohling

Printed Name

ALAN W. BOHLING

Position

PETROLEUM ENGINEER

Company

CHEVRON U.S.A.

Date

FEBRUARY 7, 1994

SURVEYOR CERTIFICATION

I hereby certify that the well location shown on this plat was plotted from field notes of actual surveys made by me or under my supervision, and that the same is true and correct to the best of my knowledge and belief.

Date Surveyed

Signature & Seal of
Professional Surveyor

Certificate No.

Submit to Appropriate
District Office
State Lease - 4 copies
Fee Lease - 3 copies

State of New Mexico
Energy, Minerals and Natural Resources Department

Form C-102
Revised 1-1-89

OIL CONSERVATION DIVISION

P.O. Box 2088
Santa Fe, New Mexico 87504-2088

DISTRICT I
P.O. Box 1980, Hobbs, NM 88240

DISTRICT II
P.O. Drawer 00, Aramis, NM 88210

DISTRICT III
1000 Rio Brazos Rd., Aztec, NM 87410

WELL LOCATION AND ACREAGE DEDICATION PLAT

All Distances must be from the outer boundaries of the section

Operator CHEVRON U.S.A.			Lease ARNOTT RAMSAY (NCT-C)		Well No. 16
Unit Letter H	Section 21	Township 21S	Range 36E	County NMPM LEA	
Actual Footage Location of Well: 1780 feet from the NORTH line and 680 feet from the EAST line					
Ground level Elev.		Producing Formation YTS/7-RVRS/QN	Pool EUMONT (PRO GAS)		Dedicated Acreage: 640 Acres

1. Outline the acreage dedicated to the subject well by colored pencil or facsimile marks on the plat below.

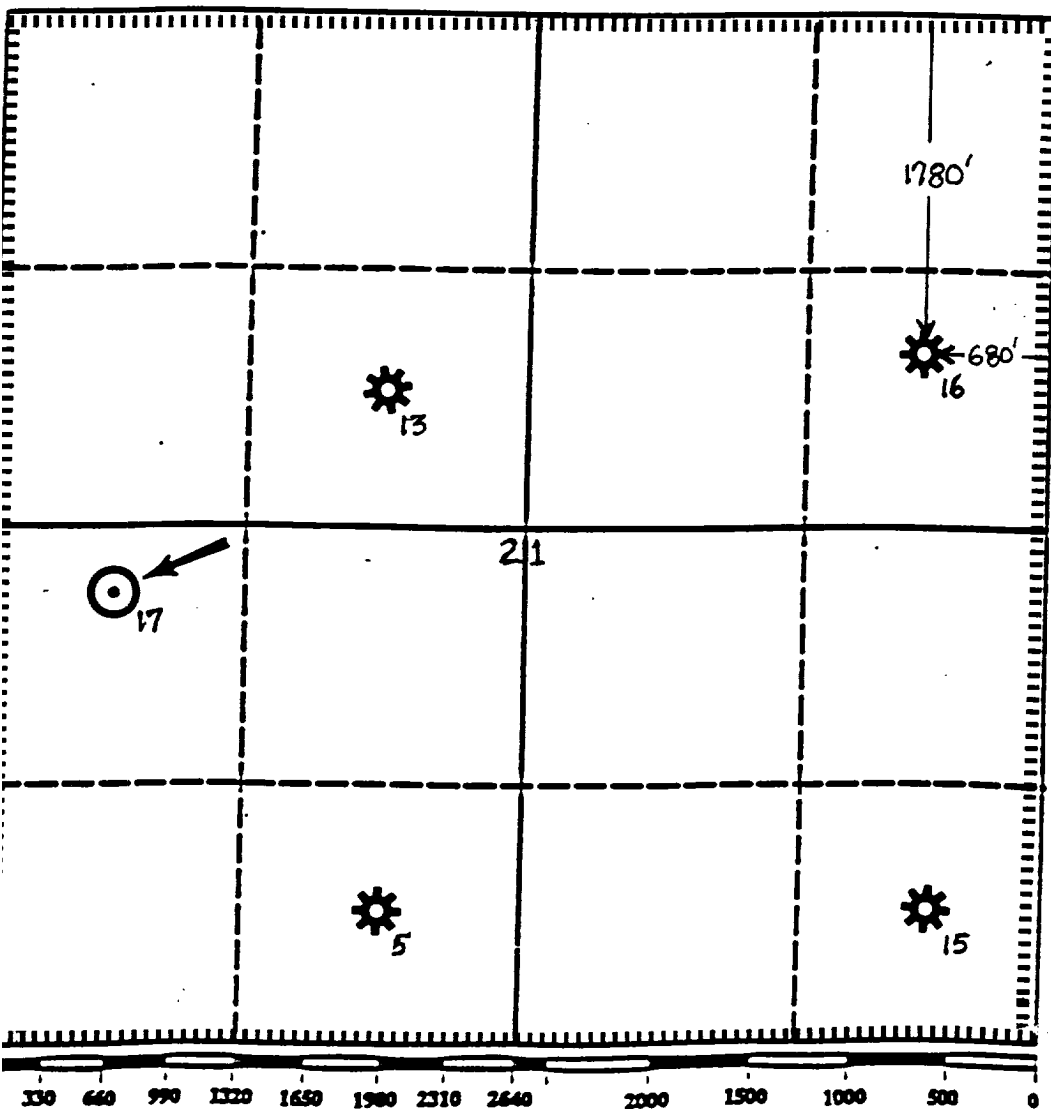
2. If more than one lease is dedicated to the well, outline each and identify the ownership thereof (both as to working interest and royalty).

3. If more than one lease of different ownership is dedicated to the well, have the interest of all owners been consolidated by communitization, unitization, force-pooling, etc.?

☐ Yes ☐ No If answer is "yes" type of consolidation _____

If answer is "no" list the owners and tract descriptions which have actually been consolidated. (Use reverse side of this form if necessary.) _____

No allowable will be assigned to the well until all interests have been consolidated (by communitization, unitization, force-pooling, or otherwise) or until a non-standard unit, eliminating such interest, has been approved by the Division.



OPERATOR CERTIFICATION

I hereby certify that the information contained herein is true and complete to the best of my knowledge and belief.

Signature
Alan W. Bohling

Printed Name
ALAN W. BOHLING

Position
PETROLEUM ENGINEER

Company
CHEVRON U.S.A.

Date
FEBRUARY 7, 1994

SURVEYOR CERTIFICATION

I hereby certify that the well location shown on this plat was plotted from field notes of actual surveys made by me or under my supervision, and that the same is true and correct to the best of my knowledge and belief.

Date Surveyed

Signature & Seal of
Professional Surveyor

Certificate No.



STATE OF NEW MEXICO

ENERGY, MINERALS AND NATURAL RESOURCES DEPARTMENT

OIL CONSERVATION DIVISION

ANB



BRUCE KING
GOVERNOR

ANITA LOCKWOOD
CABINET SECRETARY

August 2, 1993

POST OFFICE BOX 2088
STATE LAND OFFICE BUILDING
SANTA FE, NEW MEXICO 87504
(505) 827-5800

Chevron U.S.A., Inc.
P.O. Box 1150
Midland, TX 79702

Attention: A.W. Bohling

Administrative Order NSL-3007-B(SD)

Dear Mr. Bohling:

Reference is made to your application dated June 21, 1993 for an unorthodox Eumont gas well location in an existing standard 640-acre gas spacing and proration unit (GPU) for said Eumont Gas Pool comprising all of Section 21, Township 21 South, Range 36 East, NMPM, Lea County, New Mexico. Said GPU had originally been dedicated to the Arnott Ramsey (NCT-C) Well No. 13 located in Unit F of said Section 21.

By Division Order NSL-3007(SD), dated April 25, 1991, an additional well, the Arnott Ramsey (NCT-C) Well No. 5, located at an unorthodox gas well location 660 feet from the South line and 1980 feet from the West line (Unit N) of said Section 21 was approved for the subject GPU.

Further, by Division Administrative Order NSL-3007-A(SD), dated August 20, 1992, a third well, the Arnott Ramsey (NCT-C) Well No. 15, located at an unorthodox gas well location 660 feet from the South and East lines (Unit P) of said Section 21 was approved for simultaneous dedication to the subject GPU.

By the authority granted me under the provisions of Rule 2(c) of the Special Rules and Regulations for the Eumont Gas Pool, as promulgated by Division Order No. R-8170, as amended, the following described well to be drilled at an unorthodox gas well location is hereby approved:

*Arnott Ramsey (NCT-C) Well No. 16
1780' FNL - 680' FEL (Unit H)*

Administrative Order NSL-3007-B(SD)

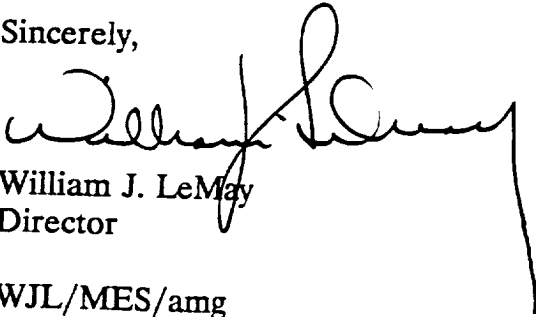
Chevron U.S.A., Inc.

August 2, 1993

Page 2

Also, you are hereby authorized to simultaneously dedicate Eumont Gas production from the Arnott Ramsey (NCT-C) Well No. 16 with the Arnott Ramsey (NCT-C) Well Nos. 5, 13 and 15. Furthermore, you are hereby permitted to produce the allowable assigned the subject GPU from all four wells in any proportion.

Sincerely,



William J. LeMay
Director

WJL/MES/amg

cc: Oil Conservation Division - Hobbs
NM State Land Office - Santa Fe
Doyle Hartman, Oil Operator - Midland, TX
File: NSL-3007(SD)
NSL-3007-A(SD)



February 7, 1994
Midland, Texas

Chevron U.S.A. Production Company
P.O. Box 1150
Midland, TX 79702

Unorthodox Gas Well Location
and Simultaneous Dedication
Eumont Yates 7 Rvrs Qn
(Pro Gas) Pool
1830' FSL and 600' FWL
Section 21, T-21-S. R-36-E
Lea County, New Mexico

Amoco Production Company
501 Westlake Park Blvd.
Houston, Texas 77253

Gentlemen:

Attached is a copy of Chevron's administrative application for NMOCD approval of an Unorthodox Gas Well Location and Simultaneous Dedication in the Eumont Yates 7 Rvrs Qn (Pro Gas) Pool.

Chevron plans to drill and complete the **Arnott Ramsay (NCT-C) Well No. 17** in the Eumont Yates 7 Rvrs Qn (Pro Gas) Pool. It is our desire to also simultaneously dedicate the existing 640-acre Eumont Gas Proration Unit assigned to our Arnott Ramsay (NCT-C) Well Nos. 5, 13, 15 and 16 [Administrative Order NSL-3007B(SD)] to all five wells. As a result, the location of the Arnott Ramsay (NCT-C) Well No. 17 becomes unorthodox. The location of Well No. 17 is 1830 feet FSL and 600 feet FWL of Section 21, T-21-S, R-36-E, NMPM, Lea County, New Mexico.

If you have any questions, please contact me at (915) 687-7246.

Yours very truly,

A. W. Bohling

A. W. Bohling
Petroleum Engineer

/smdr
11950.DOC

Attachments



February 7, 1994
Midland, Texas

Chevron U.S.A. Production Company
P.O. Box 1150
Midland, TX 79702

Unorthodox Gas Well Location
and Simultaneous Dedication
Eumont Yates 7 Rvrs Qn
(Pro Gas) Pool
1830' FSL and 600' FWL
Section 21, T-21-S. R-36-E
Lea County, New Mexico

Citation Oil and Gas Corporation
8223 Willow Place South, Ste. 250
Houston, Texas 77070

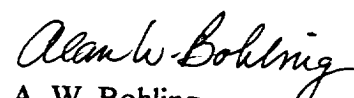
Gentlemen:

Attached is a copy of Chevron's administrative application for NMOCD approval of an Unorthodox Gas Well Location and Simultaneous Dedication in the Eumont Yates 7 Rvrs Qn (Pro Gas) Pool.

Chevron plans to drill and complete the **Arnott Ramsay (NCT-C) Well No. 17** in the Eumont Yates 7 Rvrs Qn (Pro Gas) Pool. It is our desire to also simultaneously dedicate the existing 640-acre Eumont Gas Proration Unit assigned to our Arnott Ramsay (NCT-C) Well Nos. 5, 13, 15 and 16 [Administrative Order NSL-3007B(SD)] to all five wells. As a result, the location of the Arnott Ramsay (NCT-C) Well No. 17 becomes unorthodox. The location of Well No. 17 is 1830 feet FSL and 600 feet FWL of Section 21, T-21-S, R-36-E, NMPM, Lea County, New Mexico.

If you have any questions, please contact me at (915) 687-7246.

Yours very truly,


A. W. Bohling
Petroleum Engineer

/tmr
11949.DOC

Attachments



February 7, 1994
Midland, Texas

Chevron U.S.A. Production Company
P.O. Box 1150
Midland, TX 79702

Unorthodox Gas Well Location
and Simultaneous Dedication
Eumont Yates 7 Rvrs Qn
(Pro Gas) Pool
1830' FSL and 600' FWL
Section 21, T-21-S. R-36-E
Lea County, New Mexico

Conoco Incorporated
10 Desta Drive, Ste. 100W
Midland, Texas 79705

Gentlemen:

Attached is a copy of Chevron's administrative application for NMOCD approval of an Unorthodox Gas Well Location and Simultaneous Dedication in the Eumont Yates 7 Rvrs Qn (Pro Gas) Pool.

Chevron plans to drill and complete the **Arnott Ramsay (NCT-C) Well No. 17** in the Eumont Yates 7 Rvrs Qn (Pro Gas) Pool. It is our desire to also simultaneously dedicate the existing 640-acre Eumont Gas Proration Unit assigned to our Arnott Ramsay (NCT-C) Well Nos. 5, 13, 15 and 16 [Administrative Order NSL-3007B(SD)] to all five wells. As a result, the location of the Arnott Ramsay (NCT-C) Well No. 17 becomes unorthodox. The location of Well No. 17 is 1830 feet FSL and 600 feet FWL of Section 21, T-21-S, R-36-E, NMPM, Lea County, New Mexico.

If you have any questions, please contact me at (915) 687-7246.

Yours very truly,

A handwritten signature in cursive script that reads "Alan W. Bohling".

A. W. Bohling
Petroleum Engineer

/s/ndr
11947.DOC

Attachments



February 7, 1994
Midland, Texas

Chevron U.S.A. Production Company
P.O. Box 1150
Midland, TX 79702

Unorthodox Gas Well Location
and Simultaneous Dedication
Eumont Yates 7 Rvrs Qn
(Pro Gas) Pool
1830' FSL and 600' FWL
Section 21, T-21-S. R-36-E
Lea County, New Mexico

Doyle Hartman
P. O. Box 10426
Midland, Texas 79702

Gentlemen:

Attached is a copy of Chevron's administrative application for NMOCD approval of an Unorthodox Gas Well Location and Simultaneous Dedication in the Eumont Yates 7 Rvrs Qn (Pro Gas) Pool.

Chevron plans to drill and complete the **Arnott Ramsay (NCT-C) Well No. 17** in the Eumont Yates 7 Rvrs Qn (Pro Gas) Pool. It is our desire to also simultaneously dedicate the existing 640-acre Eumont Gas Proration Unit assigned to our Arnott Ramsay (NCT-C) Well Nos. 5, 13, 15 and 16 [Administrative Order NSL-3007B(SD)] to all five wells. As a result, the location of the Arnott Ramsay (NCT-C) Well No. 17 becomes unorthodox. The location of Well No. 17 is 1830 feet FSL and 600 feet FWL of Section 21, T-21-S, R-36-E, NMPM, Lea County, New Mexico.

If you have any questions, please contact me at (915) 687-7246.

Yours very truly,

Alan W. Bohling
A. W. Bohling
Petroleum Engineer

/smdr
11946.DOC

Attachments



February 7, 1994
Midland, Texas

Chevron U.S.A. Production Company
P.O. Box 1150
Midland, TX 79702

Unorthodox Gas Well Location
and Simultaneous Dedication
Euont Yates 7 Rvrs Qn
(Pro Gas) Pool
1830' FSL and 600' FWL
Section 21, T-21-S. R-36-E
Lea County, New Mexico

John Hendrix Corporation
223 W. Wall, Ste. 525
Midland, Texas 79701

Gentlemen:

Attached is a copy of Chevron's administrative application for NMOCD approval of an Unorthodox Gas Well Location and Simultaneous Dedication in the Eumont Yates 7 Rvrs Qn (Pro Gas) Pool.

Chevron plans to drill and complete the **Arnott Ramsay (NCT-C) Well No. 17** in the Eumont Yates 7 Rvrs Qn (Pro Gas) Pool. It is our desire to also simultaneously dedicate the existing 640-acre Eumont Gas Proration Unit assigned to our Arnott Ramsay (NCT-C) Well Nos. 5, 13, 15 and 16 [Administrative Order NSL-3007B(SD)] to all five wells. As a result, the location of the Arnott Ramsay (NCT-C) Well No. 17 becomes unorthodox. The location of Well No. 17 is 1830 feet FSL and 600 feet FWL of Section 21, T-21-S, R-36-E, NMPM, Lea County, New Mexico.

If you have any questions, please contact me at (915) 687-7246.

Yours very truly,

A handwritten signature in cursive script that reads "A. W. Bohling".

A. W. Bohling
Petroleum Engineer

/smdr
11945.DOC

Attachments



February 7, 1994
Midland, Texas

Chevron U.S.A. Production Company
P.O. Box 1150
Midland, TX 79702

Unorthodox Gas Well Location
and Simultaneous Dedication
Eumont Yates 7 Rvrs Qn
(Pro Gas) Pool
1830' FSL and 600' FWL
Section 21, T-21-S. R-36-E
Lea County, New Mexico

Oxy U. S. A. Incorporated
P. O. Box 50250
Midland, Texas 79710

Gentlemen:

Attached is a copy of Chevron's administrative application for NMOCD approval of an Unorthodox Gas Well Location and Simultaneous Dedication in the Eumont Yates 7 Rvrs Qn (Pro Gas) Pool.

Chevron plans to drill and complete the **Arnott Ramsay (NCT-C) Well No. 17** in the Eumont Yates 7 Rvrs Qn (Pro Gas) Pool. It is our desire to also simultaneously dedicate the existing 640-acre Eumont Gas Proration Unit assigned to our Arnott Ramsay (NCT-C) Well Nos. 5, 13, 15 and 16 [Administrative Order NSL-3007B(SD)] to all five wells. As a result, the location of the Arnott Ramsay (NCT-C) Well No. 17 becomes unorthodox. The location of Well No. 17 is 1830 feet FSL and 600 feet FWL of Section 21, T-21-S, R-36-E, NMPM, Lea County, New Mexico.

If you have any questions, please contact me at (915) 687-7246.

Yours very truly,

Alana W. Bohling
A. W. Bohling
Petroleum Engineer

/smdr
11943.DOC

Attachments



February 7, 1994
Midland, Texas

Chevron U.S.A. Production Company
P.O. Box 1150
Midland, TX 79702

Unorthodox Gas Well Location
and Simultaneous Dedication
Eumont Yates 7 Rvrs Qn
(Pro Gas) Pool
1830' FSL and 600' FWL
Section 21, T-21-S. R-36-E
Lea County, New Mexico

Texaco Exploration & Production, Inc.
P. O. Box 730
Hobbs, New Mexico 88240-0730

Gentlemen:

Attached is a copy of Chevron's administrative application for NMOCD approval of an Unorthodox Gas Well Location and Simultaneous Dedication in the Eumont Yates 7 Rvrs Qn (Pro Gas) Pool.

Chevron plans to drill and complete the **Arnott Ramsay (NCT-C) Well No. 17** in the Eumont Yates 7 Rvrs Qn (Pro Gas) Pool. It is our desire to also simultaneously dedicate the existing 640-acre Eumont Gas Proration Unit assigned to our Arnott Ramsay (NCT-C) Well Nos. 5, 13, 15 and 16 [Administrative Order NSL-3007B(SD)] to all five wells. As a result, the location of the Arnott Ramsay (NCT-C) Well No. 17 becomes unorthodox. The location of Well No. 17 is 1830 feet FSL and 600 feet FWL of Section 21, T-21-S, R-36-E, NMPM, Lea County, New Mexico.

If you have any questions, please contact me at (915) 687-7246.

Yours very truly,

Alan W. Bohling
A. W. Bohling
Petroleum Engineer

/s/mr
11941.DOC

Attachments