

District I
PO Box 1980, Hobbs, NM 88241-1980
District II
PO Drawer DD, Artesia, NM 88211-0719
District III
1000 Rio Brazos Rd., Aztec, NM 87410
District IV
PO Box 2088, Santa Fe, NM 87504-2088

State of New Mexico
Energy, Minerals & Natural Resources Department

OIL CONSERVATION DIVISION
PO Box 2088
Santa Fe, NM 87504-2088

Form C-101
Revised February 21, 1994
Instructions on back
Submit to Appropriate District Office
State Lease - 6 Copies
Fee Lease - 5 Copies

☐ AMENDED REPORT

APPLICATION FOR PERMIT TO DRILL, RE-ENTER, DEEPEN, PLUGBACK, OR ADD A ZONE

Operator Name and Address. CONOCO INC. 10 DESTA DRIVE STE 100W MIDLAND, TEXAS 79705		OGRID Number 005073
Property Code 003103	Property Name State D Com	API Number 30-025-3297
		Well No. 19

7 Surface Location

UL or lot no.	Section	Township	Range	Lot Idn	Feet from the	North/South line	Feet from the	East/West line	County
M	11	21S	36E		990	South	760	West	Lea

8 Proposed Bottom Hole Location If Different From Surface

UL or lot no.	Section	Township	Range	Lot Idn	Feet from the	North/South line	Feet from the	East/West line	County

9 Proposed Pool 1

Eumont Yates 7 Rvrs Queen Gas

10 Proposed Pool 2

Work Type Code N	Well Type Code G	Cable/Rotary R	Lease Type Code S	Ground Level Elevation 3588'
Multiple No	Proposed Depth 3680'	Formation Yates/7 Rvr/Queen	Contractor NA	Spud Date 6/26/95

21 Proposed Casing and Cement Program

Hole Size	Casing Size	Casing weight/foot	Setting Depth	Sacks of Cement	Estimated TOC
12-1/4"	8-5/8"	24#	420'	350	Surface
7-7/8"	4-1/2"	11.6#	3680'	960	Surface

11 Describe the proposed program. If this application is to DEEPEN or PLUG BACK give the data on the present productive zone and proposed new productive zone. Describe the blowout prevention program, if any. Use additional sheets if necessary.

It is proposed to drill this well vertically through the Queen formation according to the plan outlined in the following attachments:

1. Well Location & Acreage Dedication Plat (C-102)
2. Proposed Well Plan Outline
3. Cementing Program
4. BOP & Choke Manifold Specifications

Permit Expires 6 Months From Approval
Date Unless Drilling Underway.

To be simultaneously dedicated to 200-acre nonstandard proration unit (NSP 504) with Well No. 16.

12 I hereby certify that the information given above is true and complete to the best of my knowledge and belief.

Signature:

Printed name: Jerry W. Hoover

Title: Sr. Conservation Coordinator

Date:

6/14/95

Phone:

(915) 686-6548

OIL CONSERVATION DIVISION

Approved by:

ORIGINAL SIGNED BY JERRY SEXTON

Title:

DISTRICT I SUPERVISOR

Approval Date:

JUN 20 1995

Expiration Date:

Conditions of Approval:

Attached ☐

RECEIVED

JUN 10 1966
OLD HOBBS
OFFICE

2007 05 11

PROPOSED WELL PLAN OUTLINE

WELL NAME **STATE "D" COM No. 19**

LOCATION **SEC 11-M, T-21S, R-36E**

TVD IN 1000'	MD	FORMATION TOPS & TYPE	DRILLING PROBLEMS	TYPE OF FORMATION EVALUATION	HOLE SIZE	CASING SIZE DEPTH	FRAC GRAD	FORMATION PRESSURE GRADIENT	MUD WT TYPE	DAYS
0		Red Beds	Swelling in red beds from surface		12-1/4"	420'			Sped	1
1		Anhydrite 1150' T/Salt 1340'	Salt Section without	H2S ON AT 1500'		8-5/8" 24# K35 STC Circulate to surface 350 SX			Saturated brine 10 ppg	
2		B/Salt 2600' Yates 2710'	Lost circulation to TD		7-7/8"					
3		7-Rivers 2957' Owens 3400' Fenrose 3520' Grayburg 3680'	Stuck bgs							
4		TD 3680'		TD - B/SALT DLL/MSFL/GR/CAL CNL/FDC/GR/CAL (Run GR/CAL to verify 1st run)		3680'		BHP = 200 psi	Gel & Starch at TD	6
5						4-1/2" 11.6# K35 LTC Circulate to surface 960 SX			for logging FL @ 10 psi 10.0 ppg	
6										
7										
8										
9										
10										
11										
12										
13										
14										
15										
16										

DATE JUNE 1995

APPROVED B.E. GOODWIN

DRILLING ENGINEER

RECEIVED

JUN 1 • 1966

**QCD HOBBS
OFFICE**

WELL NAME: State D Com No. 19

C E M E N T I N G P R O G R A M

SURFACE CASING STRING

LEAD 250 sxs Class C Mixed at 13.7 ppg
Additives 4 % Gel + 2 % A7P

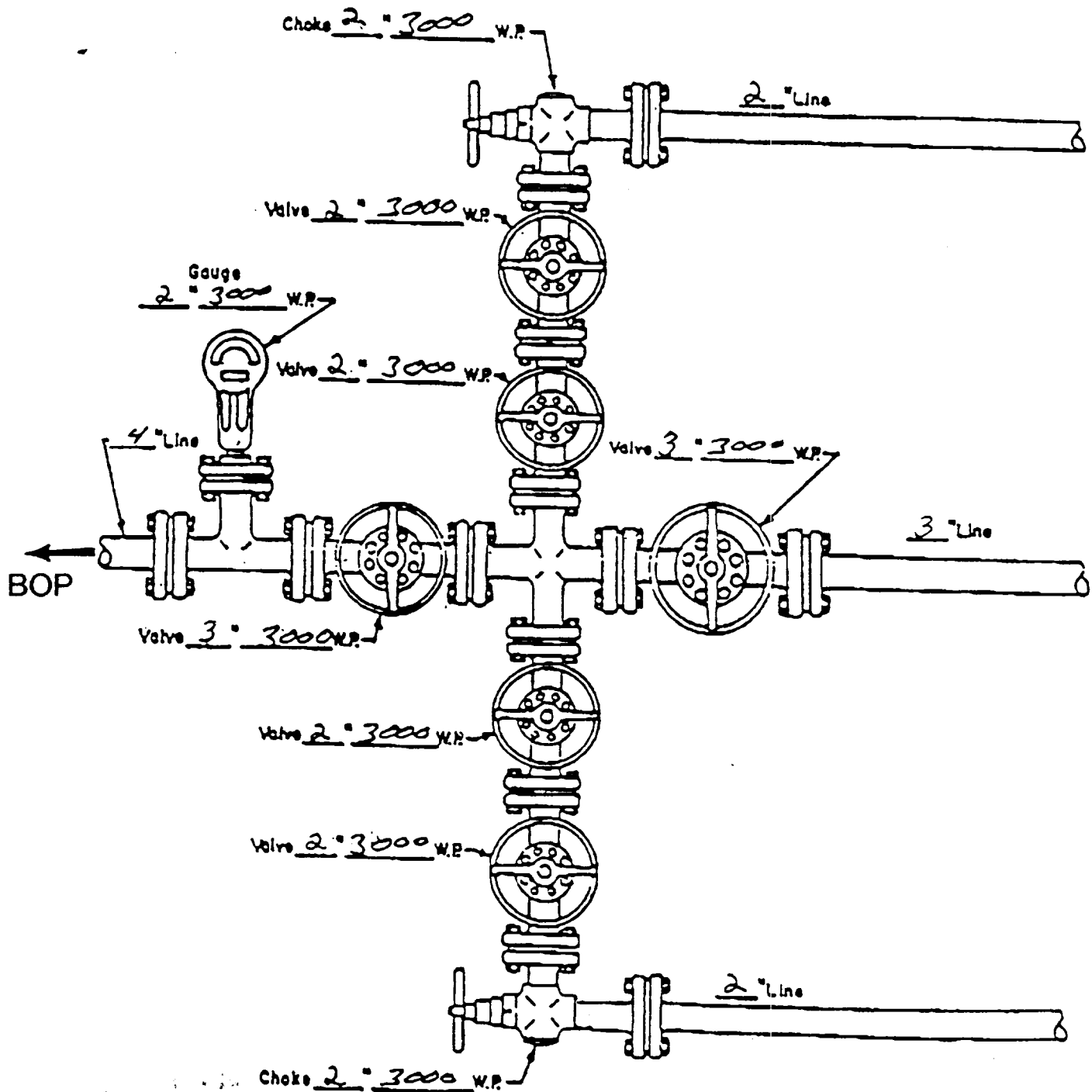
TAIL 100 sxs Class C Mixed at 14.8 ppg
Additives 2 % A7P

PRODUCTION CASING STRING

LEAD 560 sxs Class C-Lite Mixed at 12.7 ppg
Additives 65:35:6 with 5pps salt + .2% SMS

TAIL 400 sxs Class C Mixed at 14.6 ppg
Additives 1.1% Fillo-Bloc + .2% SMS
Percent free water 0 Water loss 50 cc

CHOKE MANIFOLD DIAGRAM



MANIFOLD
3000 #W.P.

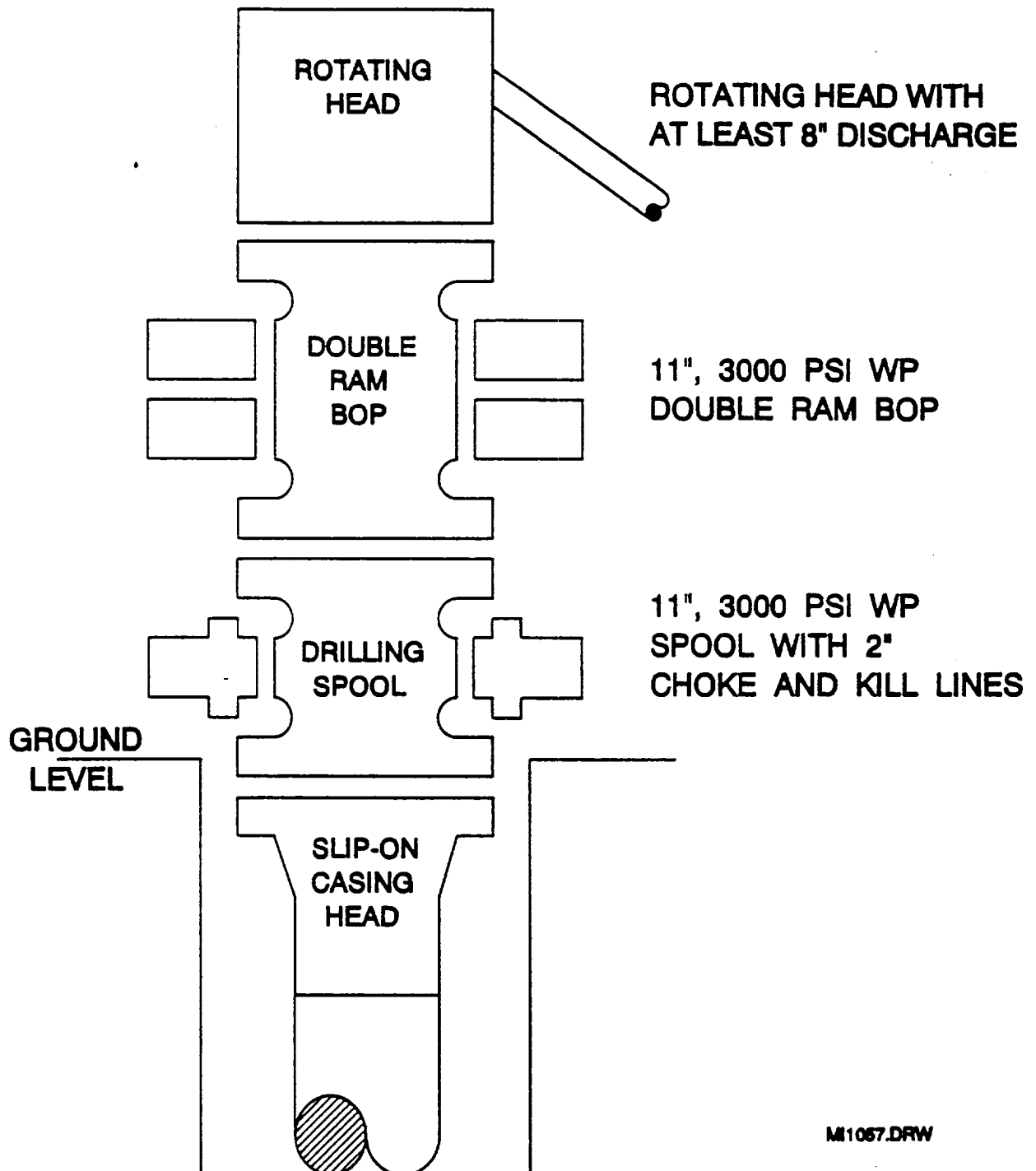
- ☒ Manual
- ☐ Hydraulic

RECEIVED

JUN 10 1965

**OLD HUBBS
OFFICE**

BOP SPECIFICATIONS



9/5/05
ETI

RECEIVED
...
OFFICE