

Submit 3 Copies To Appropriate District
Office
District I
1625 N. French Dr., Hobbs, NM 88240
District II
811 South First, Artesia, NM 88210
District III
1000 Rio Brazos Rd., Aztec, NM 87410
District IV
2040 South Pacheco, Santa Fe, NM 87505

State of New Mexico
Energy, Minerals and Natural Resources

Form C-103
Revised March 25, 1999

OIL CONSERVATION DIVISION
2040 South Pacheco
Santa Fe, NM 87505

WELL API NO. 30-025-33061
5. Indicate Type of Lease STATE <input checked="" type="checkbox"/> FEE <input type="checkbox"/>
6. State Oil & Gas Lease No.
7. Lease Name or Unit Agreement Name: Abe Unit
8. Well No. 1
9. Pool name or Wildcat Legg (Atoka)
10. Elevation (Show whether DR, RKB, RT, GR, etc.) 3679 RKB (18' AGL)

SUNDRY NOTICES AND REPORTS ON WELLS
(DO NOT USE THIS FORM FOR PROPOSALS TO DRILL OR TO DEEPEN OR PLUG BACK TO A DIFFERENT RESERVOIR. USE "APPLICATION FOR PERMIT" (FORM C-101) FOR SUCH PROPOSALS.)

1. Type of Well:
Oil Well ☐ Gas Well ☒ Other

2. Name of Operator
Santa Fe Snyder Corporation

3. Address of Operator
550 W. Texas, Suite 1330, Midland, TX 79701

4. Well Location
Unit Letter O : 760 feet from the South line and 1980 feet from the East line
Section 28 Township 21S Range 33E NMPM Lea County

11. Check Appropriate Box to Indicate Nature of Notice, Report or Other Data

NOTICE OF INTENTION TO:

PERFORM REMEDIAL WORK ☐ PLUG AND ABANDON ☒

TEMPORARILY ABANDON ☐ CHANGE PLANS ☐

PULL OR ALTER CASING ☐ MULTIPLE COMPLETION ☐

OTHER: ☐

SUBSEQUENT REPORT OF:

REMEDIAL WORK ☐ ALTERING CASING ☐

COMMENCE DRILLING OPNS. ☐ PLUG AND ABANDONMENT ☐

CASING TEST AND CEMENT JOB ☐

OTHER: ☐

12. Describe proposed or completed operations. (Clearly state all pertinent details, and give pertinent dates, including estimated date of starting any proposed work). SEE RULE 1103. For Multiple Completions: Attach wellbore diagram of proposed completion or recompilation.

Plug and Abandon well.

Set cement retainer at 13,820' and squeeze current perms at 13,916 - 926' with 20 sxs of Class H. Place and tag 150' plug with 12.5 sxs at 13,810'. Cement 7" shoe at 12,221' with 25 sxs Class H cement and tag plug. Set 167' (25 sxs) plug across liner top at 11,874 and tag. Set 150' plug at 9300' with 32 sxs Class H. Cut and pull approximately 6500' of 7" casing. Plug stub with 64 sxs Class C cement and tag. Set 150' (64 sxs) plug across 9 5/8" shoe at 5195' and tag. Set 150' (130 sxs) plug across 13 3/8" shoe at 1650' and tag. Set and tag 70' (52 sxs) surface plug. Cut wellhead off 3' below ground level, install plugged well marker, clean and reclaim location.

Note: Place 9.5 ppg mud between all plugs. Add 2% CaCl₂ to slurry to reduce WOC time on tagged plugs.

I hereby certify that the information above is true and complete to the best of my knowledge and belief.

SIGNATURE Terry McCullough TITLE Sr. Production Clerk DATE 4/26/00

Type or print name Terry McCullough

Telephone No. 915/686-6612

(This space for State use)

APPROVED BY _____ TITLE _____ DATE _____

Conditions of approval, if any:

SC

PLUGGING & ABANDONMENT WORKSHEET

OPERATOR Santa Fe Snyder Corporation

WELL NAME Abe Unit #1

SECT 28

TWN 21S

RNG 33E

760 FSL

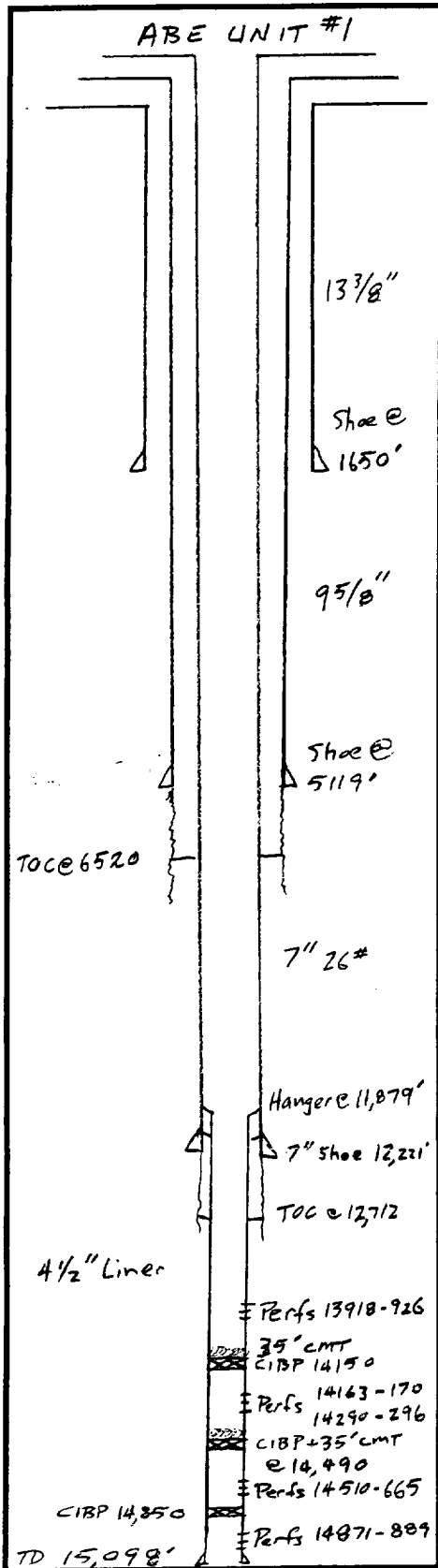
1980 FEL

TD 15,100

FM @ TD Morrow

PBTD 14,115

FM @ PBTD Atoka



	SIZE	SET @	TOC	TOC Determined	
SURFACE	13 3/8	1,650	Surf.	Circ.	
INTMED 1	9 5/8	5,119	Surf.	Circ.	
INTMED 2	7	12,221	6,520	Temp. Survey	
PROD					
	SIZE	TOP	BOT	TOC	Determined
LINER 1	4 1/2	11,879	15,098	12,712	Temp Sur
LINER 2					
CUT & PULL @			TOP - BOTTOM		
INTMED 1			PERFS	13,918 - 13,926	
INTMED 2		6500			
PROD			O/H		

* Required plugs - Dist. 1

Rustler (Anhyd) *	PLUG	TYPE PLUG	SACKS CMT	DEPTH
Yates				
Queen	EXAMPLES			
Grayburg	Plug #1	OH	25 SXS	9850'
San Andres	Plug #2	SROE	50 SXS	8700'-8800'
	Plug #3	CIBP/35'		5300'
Capitan Reef *	Plug #4	STUB	25 SXS	5300'
	Plug #5	RETNR SQZ	10 SXS	4800'-4700'
Delaware	Plug #6	SURF	200 SXS	400'
Bell Canyon	Plug #7		10 SXS	0-10'
Cherry Canyon	Plug #1	RETNR SQZ	20 sxs	13,820
Brushy Canyon	Plug #2	150' Plug	12.5 sxs	13,810
Bone Spring	Plug #3	7" Shoe	25 sxs	12,296
	Plug #4	Liner Top	25 sxs	11,954
Glorieta *	Plug #5	150'	32 sxs	9,300
Blaine	Plug #6	7" Csg Stub	64 sxs	6,500
Tubb	Plug #7	9 5/8 Shoe	64 sxs	5,195
Drinkard	Plug #8	13 3/8 Shoe	130 sxs	1,650
Abo	Plug #9	Surface	52 sxs	10 - 70'
	Plug #10			
Wolfcamp	Plug #			
Penn	Plug #			
Strawn	Plug #			
Atoka	Plug #			
Morrow	Plug #			
Miss	Plug #			
Devonian				