

WELL NAME: Lockhart B No. 12

LOCATION : Sec 14, Unit D, T-21S, R-36E

Casing Program

Surface 8-5/8 inch in 12-1/4" hole at 420 ft.

Prod 4-1/2 inch in 7-7/8" hole at 3700 ft.

Cementing Program

Surface

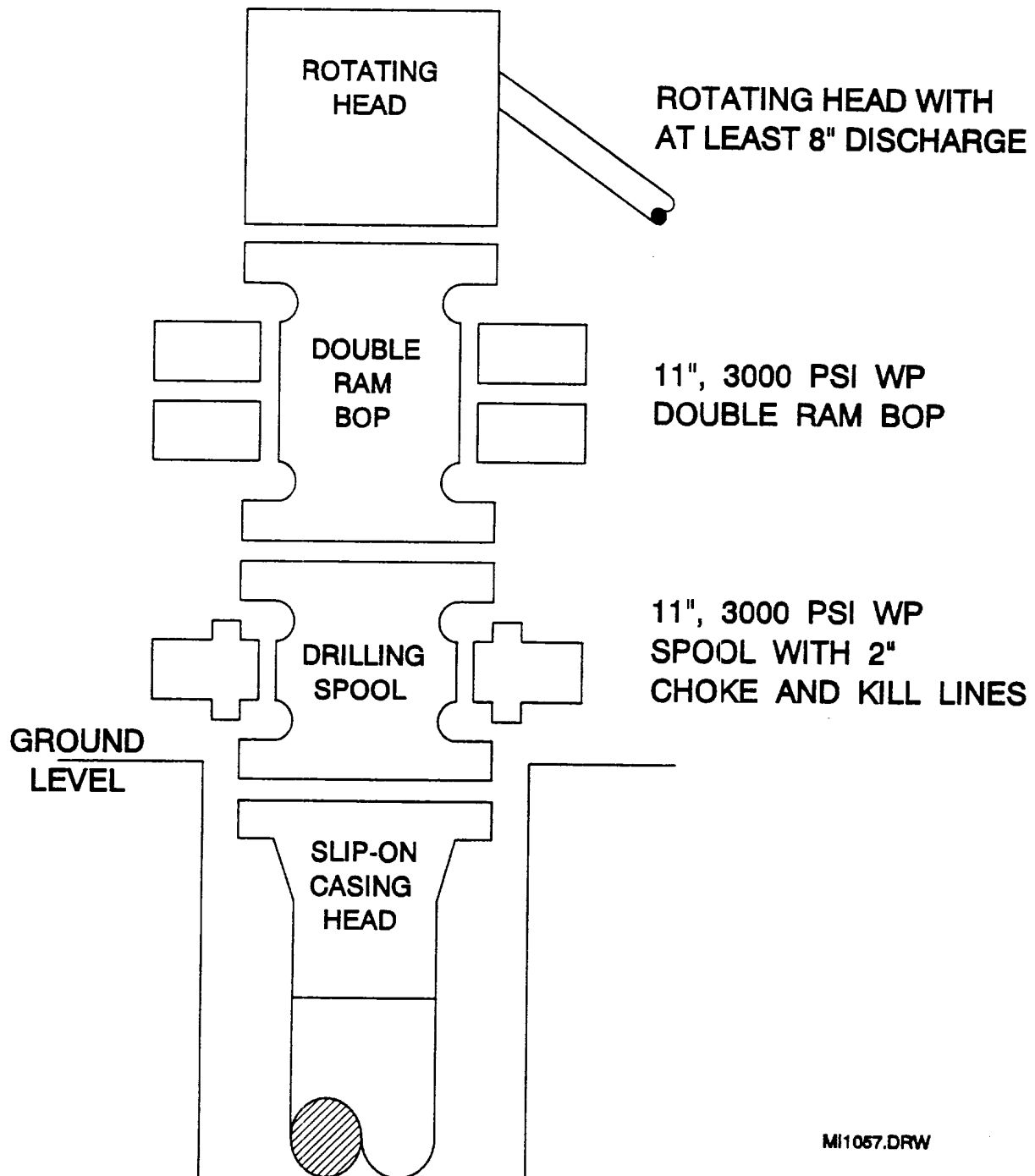
Lead 250 sxs Class C Mixed at 13.7 ppg
Additives 4% Gel + 2% A7P
Tail 100 sxs Class C Mixed at 14.8 ppg
Additives 2% A7P

Production (first stage)

Lead 560 sxs Class C-Lite Mixed at 12.7 ppg
Additives 65:35:6 with 5PPS Salt + .2% SMS
Tail 400 sxs Class C Mixed at 14.6 ppg
Additives 1.1% Flo-Bloc + .2% SMS
Percent free water 0 Water loss 50 cc



BOP SPECIFICATIONS



6/5/20
FBI



District I
PO Box 1980, Hobbs, NM 88241-1980
District II
PO Drawer DD, Artesia, NM 88211-0719
District III
1000 Rio Brazos Rd., Artesia, NM 87410
District IV
PO Box 2088, Santa Fe, NM 87504-2088

State of New Mexico
Energy, Minerals & Natural Resources Department

OIL CONSERVATION DIVISION
PO Box 2088
Santa Fe, NM 87504-2088

Form C-102
Revised February 21, 1994
Instructions on back
Submit to Appropriate District Office
State Lease - 4 Copies
Fee Lease - 3 Copies

☐ AMENDED REPORT

WELL LOCATION AND ACREAGE DEDICATION PLAT

*API Number 30-025-33210		*Pool Code 76480	*Pool Name Eumont Yates 7-Rivers Queen Gas	
*Property Code 003042	*Property Name LOCKHART-B			*Well Number 12
*OGED No. 005073	*Operator Name CONOCO, INC.			*Elevation 3572'

¹⁰ Surface Location

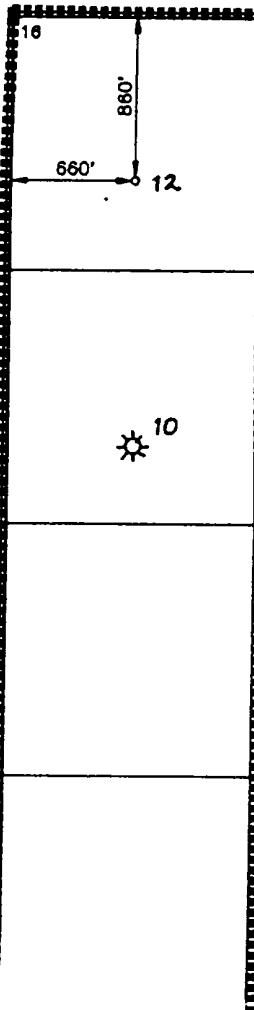
UL or lot no.	Section	Township	Range	Lot Idn	Feet from the	North/South line	Feet from the	East/West line	County
D	14	21-S	36-E		860	NORTH	660	WEST	LEA

¹¹ Bottom Hole Location If Different From Surface

UL or lot no.	Section	Township	Range	Lot Idn	Feet from the	North/South line	Feet from the	East/West line	County

*Dedicated Acres 160	*Joint or Infill N	*Consolidation Code	*Order No. NSP 392	Simultaneously dedicate 160-acre NSP to Wells #10 & #12					
-------------------------	-----------------------	---------------------	-----------------------	---	--	--	--	--	--

NO ALLOWABLE WILL BE ASSIGNED TO THIS COMPLETION UNTIL ALL INTERESTS HAVE BEEN CONSOLIDATED
OR A NON-STANDARD UNIT HAS BEEN APPROVED BY THE DIVISION

				<p>¹⁷ OPERATOR CERTIFICATION</p> <p>I hereby certify that the information contained herein is true and complete to the best of my knowledge and belief.</p> <p><i>Jerry W. Hoover</i> Signature JERRY W. HOOVER Printed Name SR. CONSERVATION COORDINATOR Title 10/25/95 Date</p> <p>¹⁸ SURVEYOR CERTIFICATION</p> <p>I hereby certify that the well location shown on this plat was plotted from field notes of actual surveys made by me or under my supervision, and that the same is true and correct to best of my belief.</p> <p>JULY 20, 1995 Date of Survey Signature and Seal of Professional Surveyor: <i>Earl Foote</i> 8278 REGISTERED PROFESSIONAL LAND SURVEYOR NEW MEXICO</p> <p>Certificate Number 8278</p>

